

Converting Colors

Hex(DFBAAE)

Have a look what the booklet for
Hex(DFBAAE) contains.

Hex(DFBAAE)	3
<i>Conversions</i>	4
<i>Details</i>	6
<i>Harmonies</i>	11
<i>Previews</i>	23
<i>Color Blindness Simulation</i>	26
<i>CSS Examples</i>	29

Color

Hex(DFBAAE)

Conversions

Conversions Part 1

Format	Color
Hex	DFBAAE
RGB	223, 186, 174
RGB Percent	87%, 73%, 68%
CMY	0.1255, 0.2706, 0.3176
CMYK	0.00, 0.17, 0.22, 0.13
HSL	15°, 43%, 78%
HSV	15°, 22%, 87%
XYZ	55.6303, 53.8618, 47.5087
YIQ	195.6950, 25.9040, 4.1120

Conversions

Conversions Part 2

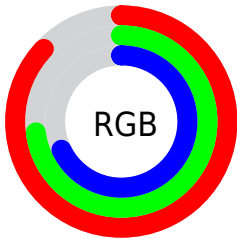
Format	Color
RYB	223, 190, 174
Decimal	14662318
CIELab	78.38, 11.43, 11.03
CIELCh	78, 15.884, 43.993
Yxy	53.8618, 0.3543, 0.3431
Android (android.graphics.Color)	4292852398 (0xFFDFBAAE)
YUV	195.6950, -10.6956, 23.9465
Hunter-Lab	73.3906, 6.8701, 12.9926

Details

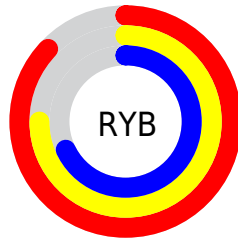
The Hex color **DFBAAE** is a light color, and the websafe version is hex **FFCCCC**. A complement of this color would be **AED3DF**, and the grayscale version is **C4C4C4**.

A 20% lighter version of the original color is **FFF2E5**, and **A7857A** is the 20% darker color. If you saturate the color by 10%, you get **DFA998**, and if you desaturate by 10%, it is **DFCBC4**.

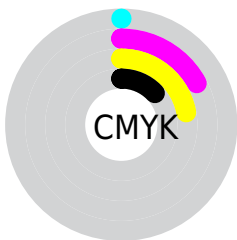
Distribution



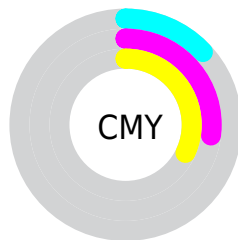
- Red (87%)
- Green (73%)
- Blue (68%)



- Red (87%)
- Yellow (75%)
- Blue (68%)



- Cyan (0%)
- Magenta (17%)
- Yellow (22%)
- Black (13%)



- Cyan (13%)
- Magenta (27%)
- Yellow (32%)

Brightness & Saturation Gradients

These gradients show how the Hex color DFBAAE changes by changing the brightness by 10 percent. The first figure shows a shift by +10% for each color and the second figure -10%.

Similar to the brightness gradients but the following saturation gradients show a change of the Hex color DFBAAE by changing the saturation by 10% instead.

 DFBAAE

 DFBAAE

FFFFFF

 C39F93

 FFF2E5

 A7857A

 8C6C61

 725349

 593C33

 41261D

 2A1204

 0C0000

 000000

 DFBAAE

 DFBAAE

 DFA998

 DFCBC4

 DF9881

 DFDCDB

 DF876B

 DFEDF1

 DF7755

 DFFDFF

 DF663F

 DFFFFFF

 DF5528

 DF4412

 DF3700

Harmonies

Analogous

The Analogous color harmony consists of three colors that are next to each other on the color wheel.



E1B8BB



DFBAAE



D5BEA6

Triad

The Triadic color harmony groups three colors that are evenly spaced from another and form a triangle on the color wheel.



DFBAAE



A6CAB9



BBC1DE

Complementary

The Complementary color scheme is a pair of colors which are on the opposite of each other on the color wheel.



DFBAAE



AED3DF

Split Complementary

Split-complementary colors differ from the complementary color scheme. The scheme consists of three colors, the original color and two neighbors of the complement color.



A9C6DE



DFBAAE



9DCBC8

Square

The Square scheme is like the rectangle color scheme, but the four colors are evenly spaced on the color wheel.



DFBAAE



B5C7AC



9DC9D6



CDBCD7

Rectangle

The Rectangle color scheme consists of four colors that form a rectangle on the color wheel.



DFBAAE



CCC1A5



9DC9D6



B4C2DF

Sweetspot

The Sweet Spot groups the original color and five complimentary colors.



DFBAAE



FFF2ED



DFAED4



807875



000000



808080

Same Dimension

The Same Dimension uses a secret algorithm to generate beautiful new colors.



DFBAAE



FFCDBD



DFD2AE



706865



B02B00



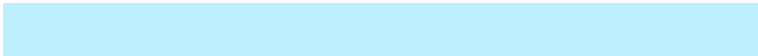
300C00

Inverse Universe

The Inverse Universe completely reimagines the original color for something new.



AED3DF



BDEFFF



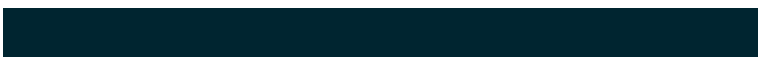
AEBBDF



656D70



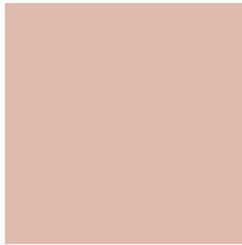
0085B0



002530

Previews

White Background



This preview shows how the Hex color DFBAAE looks on a white background.

Color Contrast Check

Large Text (above 18pt) WCAG AA × Fail

Any Text WCAG AA × Fail

Large Text (above 18pt) WCAG AAA × Fail

Any Text WCAG AAA × Fail

Black Background



This preview shows how the Hex color DFBAAE looks on a black background.

Color Contrast Check

Large Text (above 18pt) WCAG AA ✓ Pass

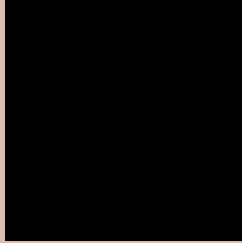
Any Text WCAG AA ✓ Pass

Large Text (above 18pt) WCAG AAA ✓ Pass

Any Text WCAG AAA ✓ Pass

If you want to check with other color combinations, try the [Color Contrast Checker](#).

Hex DFBAAE Background



This preview shows how black text looks on a background with the Hex color DFBAAE.

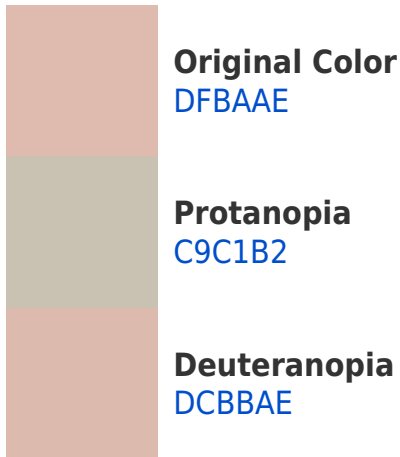


This preview shows how white text looks on a background with the Hex color DFBAAE.

Color Blindness Simulation

Color vision deficiency is a very complex topic, and I could not describe the different causes any better than Wikipedia does, so if you want to learn more, you should check out their [article about color blindness](#).

Dichromacy



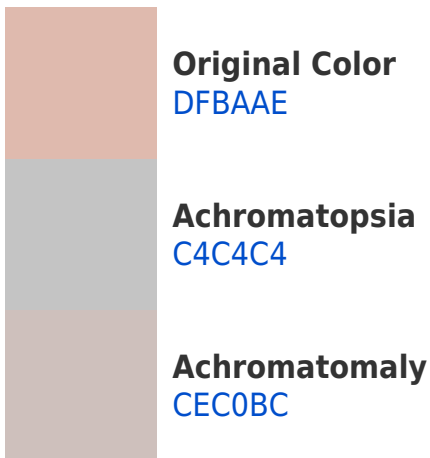


Tritanopia
E2B7C5

Trichromacy



Monochromacy



CSS Examples

Text

The CSS property to change the color of the text to Hex DFBAAE is called "color". The color property can be set on classes, ids or directly on the HTML element.

This example shows how text in the color #DFBAAE looks like.

```
.text, #text, p{  
    color:#DFBAAE  
}
```

If you want to add a text shadow in that color use the text-shadow property, you can generate a text shadow directly with our [CSS Text Shadow Generator](#).

Here you see how black text with a 4 pixel #DFBAAE colored shadow looks like.

```
.shadow{ text-shadow: 4px 4px 2px #DFBAAE
}
```

Border

The CSS property to change the border of an element to Hex DFBAAE is called "border". The border property can be set on classes, ids or directly on the HTML element.

This example shows the color as border, it can be applied via the CSS property "border" or "border-color".

```
.border, #border, table{ border:4px solid
#DFBAAE }
```

If only the border color should be changed use the property `border-color`.

```
.border{ border-color:#DFBAAE }
```

If you want to add a box shadow in that color use:

Here you see how a box with a 4 pixel #DFBAAE colored shadow looks like.

```
.boxshadow{ -moz-box-shadow:4px 4px 4px  
4px #DFBAAE; -webkit-box-shadow:4px 4px  
4px 4px #DFBAAE; box-shadow:4px 4px 4px  
4px #DFBAAE }
```

Background

The CSS property to change the background color of an element to Hex DFBAAE is called "background". The background property can be set on classes, ids or directly on the HTML element.

```
.background, #background, body{  
background:#DFBAAE }
```

If only the background color should be changed can be used:

```
.background{ background-color:#DFBAAE }
```

This example shows the color as background, it is applied via the CSS property "background".

To optimize and compress your CSS code, you can use our [online CSS compressor and optimizer](#) based on csstidy. If you want to create a linear or radial gradient as background or border, check our [CSS Gradient Generator](#).

Hey! You found this booklet interesting? Support Converting Colors with the new Membership Option!

The pro membership hides all ads, plus gives you double the colors in the color bucket, and more awesome pro features!

[Learn more, Memberships starting at \\$2.50/m!](#)

**Follow me
on Twitter!**

@ConvertingColor