

# Converting Colors

Hex(DFBBB8)

Have a look what the booklet for  
Hex(DFBBB8) contains.

<b>Hex(DFBBB8)</b> .....	3
<i><b>Conversions</b></i> .....	4
<i><b>Details</b></i> .....	6
<i><b>Harmonies</b></i> .....	11
<i><b>Previews</b></i> .....	23
<i><b>Color Blindness Simulation</b></i> .....	26
<i><b>CSS Examples</b></i> .....	29

# **Color**

**Hex(DFBBB8)**

# Conversions

## Conversions Part 1

Format	Color
Hex	DFBBB8
RGB	223, 187, 184
RGB Percent	87%, 73%, 72%
CMY	0.1255, 0.2667, 0.2784
CMYK	0.00, 0.16, 0.17, 0.13
HSL	5°, 38%, 80%
HSV	5°, 17%, 87%
XYZ	56.8535, 54.6893, 52.9070
YIQ	197.4220, 22.4190, 6.6990

# Conversions

## Conversions Part 2

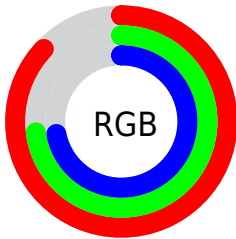
<b>Format</b>	<b>Color</b>
R <sub>Y</sub> B	223, 187, 184
Decimal	14662584
CIE Lab	78.86, 12.40, 6.32
CIE LCh	79, 13.916, 27.014
Yxy	54.6893, 0.3457, 0.3326
Android (android.graphics.Color)	4292852664 (0xFFDFBBB8)
YUV	197.4220, -6.6170, 22.4319
Hunter-Lab	73.9522, 7.8120, 9.3492

# Details

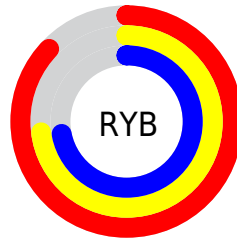
The Hex color **DFBBB8** is a light color, and the websafe version is hex **FFCCCC**. A complement of this color would be **B8DCDF**, and the grayscale version is **C5C5C5**.

A 20% lighter version of the original color is **FFF3F0**, and **A78683** is the 20% darker color. If you saturate the color by 10%, you get **DFA6A2**, and if you desaturate by 10%, it is **DFDOCE**.

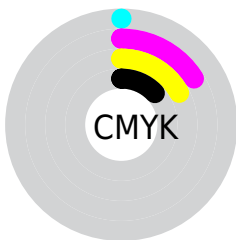
# Distribution



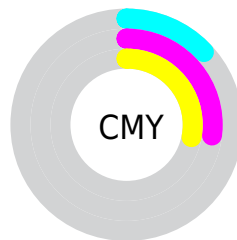
- Red (87%)
- Green (73%)
- Blue (72%)



- Red (87%)
- Yellow (73%)
- Blue (72%)



- Cyan (0%)
- Magenta (16%)
- Yellow (17%)
- Black (13%)



- Cyan (13%)
- Magenta (27%)
- Yellow (28%)

# Brightness & Saturation Gradients

These gradients show how the Hex color DFBBB8 changes by changing the brightness by 10 percent. The first figure shows a shift by +10% for each color and the second figure -10%.

Similar to the brightness gradients but the following saturation gradients show a change of the Hex color DFBBB8 by changing the saturation by 10% instead.



 DFBBBB8

FFFFFFF

 FFF3F0

 DFBBBB8

 C3A09D

 A78683

 8D6C6A

 735452

 5A3D3B

 422725

 2B1210

 120000

 000000

 DFBBBB

 DFBBBB

 DFA6A2

 DFD0CE

 DF928B

 DFE4E5

 DF7D75

 DFF9FB

 DF695F

 DFFFFFF

 DF5449

 DF3F32

 DF2B1C

 DF1606

 DF1100

# Harmonies

## Analogous

The Analogous color harmony consists of three colors that are next to each other on the color wheel.



DDBBC5



DFBBB8



DABEAE

# Triad

The Triadic color harmony groups three colors that are evenly spaced from another and form a triangle on the color wheel.



DFBBB8



B2C9B5



B4C5DD

# Complementary

The Complementary color scheme is a pair of colors which are on the opposite of each other on the color wheel.



DFBBB8



B8DCDF

# Split Complementary

Split-complementary colors differ from the complementary color scheme. The scheme consists of three colors, the original color and two neighbors of the complement color.



A7C8D8



DFBBB8



A7CBC1

# Square

The Square scheme is like the rectangle color scheme, but the four colors are evenly spaced on the color wheel.



DFBBB8



C1C6AC



A2CBCE



C4C0DA

# Rectangle

The Rectangle color scheme consists of four colors that form a rectangle on the color wheel.



DFBBB8



D3C0AA



A2CBCE



AFC6DC

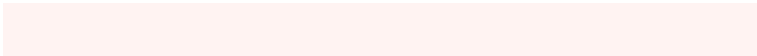


# Sweetspot

The Sweet Spot groups the original color and five complimentary colors.



DFBBB8



FFF3F2



DFB8DC



807878



000000



808080



# Same Dimension

The Same Dimension uses a secret algorithm to generate beautiful new colors.



DFBBB8



FFCEC9



DFCEB8



706665



B00E00



300400

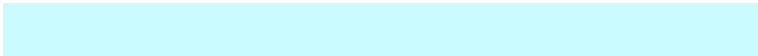


# Inverse Universe

The Inverse Universe completely reimagines the original color for something new.



B8DCDF



C9FBFF



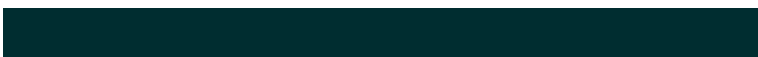
B8C9DF



656F70



00A2B0

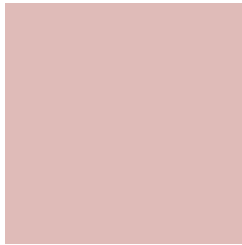


002D30



# Previews

## White Background



This preview shows how the Hex color DFBBB8 looks on a white background.

## Color Contrast Check

Large Text (above 18pt) WCAG AA × Fail

Any Text WCAG AA × Fail

Large Text (above 18pt) WCAG AAA × Fail

Any Text WCAG AAA × Fail

# Black Background



This preview shows how the Hex color DFBBB8 looks on a black background.

## Color Contrast Check

Large Text (above 18pt) WCAG AA ✓ Pass

Any Text WCAG AA ✓ Pass

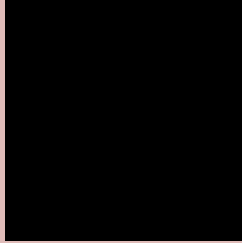
Large Text (above 18pt) WCAG AAA ✓ Pass

Any Text WCAG AAA ✓ Pass

If you want to check with other color combinations, try the [Color Contrast Checker](#).



## Hex DFBBB8 Background



This preview shows how black text looks on a background with the Hex color DFBBB8.



This preview shows how white text looks on a background with the Hex color DFBBB8.

# Color Blindness Simulation

Color vision deficiency is a very complex topic, and I could not describe the different causes any better than Wikipedia does, so if you want to learn more, you should check out their [article about color blindness](#).

## Dichromacy





**Tritanopia**  
E1B9C7

# Trichromacy



**Original Color**  
DFBBB8

**Protanomaly**  
D1C0BB

**Deuteranomaly**  
DCBCB8

**Tritanomaly**  
E0BAC2

# Monochromacy



**Original Color**  
DFBBB8

**Achromatopsia**  
C5C5C5

**Achromatomaly**  
CEC1C0

# CSS Examples

## Text

The CSS property to change the color of the text to Hex DFBBB8 is called "color". The color property can be set on classes, ids or directly on the HTML element.

This example shows how text in the color #DFBBB8 looks like.

```
.text, #text, p{  
    color:#DFBBB8  
}
```

If you want to add a text shadow in that color use the text-shadow property, you can generate a text shadow directly with our [CSS Text Shadow Generator](#).

Here you see how black text with a 4 pixel #DFBBB8 colored shadow looks like.

```
.shadow{ text-shadow: 4px 4px 2px #DFBBB8  
}
```

## Border

The CSS property to change the border of an element to Hex DFBBB8 is called "border". The border property can be set on classes, ids or directly on the HTML element.

This example shows the color as border, it can be applied via the CSS property "border" or "border-color".

```
.border, #border, table{ border:4px solid  
#DFBBB8 }
```

If only the border color should be changed use the property `border-color`.

```
.border{ border-color:#DFBBB8 }
```

If you want to add a box shadow in that color use:

Here you see how a box with a 4 pixel #DFBBB8 colored shadow looks like.

```
.boxshadow{ -moz-box-shadow:4px 4px 4px  
4px #DFBBB8; -webkit-box-shadow:4px 4px  
4px 4px #DFBBB8; box-shadow:4px 4px 4px  
4px #DFBBB8 }
```

# Background

The CSS property to change the background color of an element to Hex DFBBB8 is called "background". The background property can be set on classes, ids or directly on the HTML element.

```
.background, #background, body{  
background:#DFBBB8 }
```

If only the background color should be changed can be used:

```
.background{ background-color:#DFBBB8 }
```

This example shows the color as background, it is applied via the CSS property "background".

To optimize and compress your CSS code, you can use our [online CSS compressor and optimizer](#) based on csstidy. If you want to create a linear or radial gradient as background or border, check our [CSS Gradient Generator](#).



Hey! You found this booklet interesting? Support Converting Colors with the new Membership Option!

The pro membership hides all ads, plus gives you double the colors in the color bucket, and more awesome pro features!

**[Learn more, Memberships starting at \\$2.50/m!](#)**

**Follow me  
on Twitter!**

@ConvertingColor