

Converting Colors

Hex(DFBDAE)

Have a look what the booklet for
Hex(DFBDAE) contains.

Hex(DFBDAE)	3
<i>Conversions</i>	4
<i>Details</i>	6
<i>Harmonies</i>	11
<i>Previews</i>	23
<i>Color Blindness Simulation</i>	26
<i>CSS Examples</i>	29

Color

Hex(DFBDAE)

Conversions

Conversions Part 1

Format	Color
Hex	DFBDAE
RGB	223, 189, 174
RGB Percent	87%, 74%, 68%
CMY	0.1255, 0.2588, 0.3176
CMYK	0.00, 0.15, 0.22, 0.13
HSL	18°, 43%, 78%
HSV	18°, 22%, 87%
XYZ	56.2690, 55.1392, 47.7216
YIQ	197.4560, 25.0790, 2.5430

Conversions

Conversions Part 2

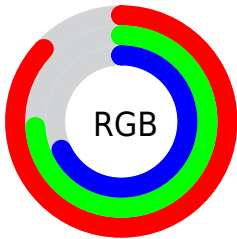
Format	Color
RYB	223, 196, 174
Decimal	14663086
CIELab	79.12, 9.83, 12.08
CIELCh	79, 15.576, 50.867
Yxy	55.1392, 0.3536, 0.3465
Android (android.graphics.Color)	4292853166 (0xFFDFBDAE)
YUV	197.4560, -11.5638, 22.4021
Hunter-Lab	74.2557, 5.3149, 13.8754

Details

The Hex color **DFBDAE** is a light color, and the websafe version is hex **FFCCCC**. A complement of this color would be **AED0DF**, and the grayscale version is **C6C6C6**.

A 20% lighter version of the original color is **FFF5E5**, and **A7887A** is the 20% darker color. If you saturate the color by 10%, you get **DFAE98**, and if you desaturate by 10%, it is **DFCCC4**.

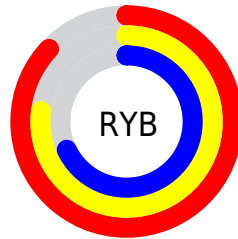
Distribution



Red (87%)

Green (74%)

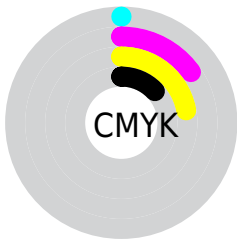
Blue (68%)



Red (87%)

Yellow (77%)

Blue (68%)

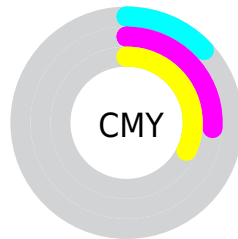


Cyan (0%)

Magenta (15%)

Yellow (22%)

Black (13%)



Cyan (13%)

Magenta (26%)

Yellow (32%)

Brightness & Saturation Gradients

These gradients show how the Hex color DFBD AE changes by changing the brightness by 10 percent. The first figure shows a shift by +10% for each color and the second figure -10%.

Similar to the brightness gradients but the following saturation gradients show a change of the Hex color DFBD AE by changing the saturation by 10% instead.

 DFBDAE

 DFBDAE

FFFFFF

 C3A293

 FFF5E5

 A7887A

 8C6E61

 725649

 593F32

 41291D

 2B1404

 0F0000

 000000

 DFBD4E

 DFBD4E

 DF4E98

 DFCCC4

 DF9E81

 DFDCDB

 DF8F6B

 DFEBF1

 DF7F55

 DFFBFF

 DF703F

 DFFFFFF

 DF6028

 DF5112

 DF4400

Harmonies

Analogous

The Analogous color harmony consists of three colors that are next to each other on the color wheel.



E3BABA



DFBDAE



D4C1A8

Triad

The Triadic color harmony groups three colors that are evenly spaced from another and form a triangle on the color wheel.



DFBDAE



A6CCBF



C1C2DF

Complementary

The Complementary color scheme is a pair of colors which are on the opposite of each other on the color wheel.



DFBDAE



AED0DF

Split Complementary

Split-complementary colors differ from the complementary color scheme. The scheme consists of three colors, the original color and two neighbors of the complement color.



AFC7E0



DFBDAE



9FCCCE

Square

The Square scheme is like the rectangle color scheme, but the four colors are evenly spaced on the color wheel.



DFBDAE



B4CAB1



A2CADA



D3BDD6

Rectangle

The Rectangle color scheme consists of four colors that form a rectangle on the color wheel.



DFBDAE



CAC5A8



A2CADA



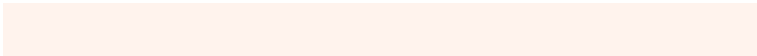
BBC3E0

Sweetspot

The Sweet Spot groups the original color and five complimentary colors.



DFBDAE



FFF3ED



DFAED0



807875



000000



808080

Same Dimension

The Same Dimension uses a secret algorithm to generate beautiful new colors.



DFBDAE



FFD1BD



DFD5AE



706865



B03600



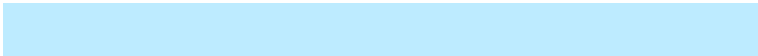
300F00

Inverse Universe

The Inverse Universe completely reimagines the original color for something new.



AED0DF



BDEBFF



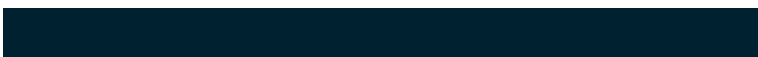
AEB8DF



656D70



007AB0



002230

Previews

White Background



This preview shows how the Hex color DFBDAE looks on a white background.

Color Contrast Check

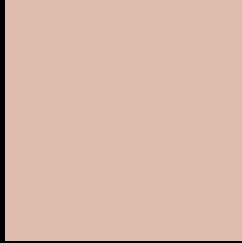
Large Text (above 18pt) WCAG AA × Fail

Any Text WCAG AA × Fail

Large Text (above 18pt) WCAG AAA × Fail

Any Text WCAG AAA × Fail

Black Background



This preview shows how the Hex color DFBDAE looks on a black background.

Color Contrast Check

Large Text (above 18pt) WCAG AA ✓ Pass

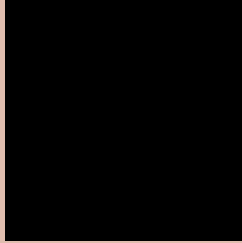
Any Text WCAG AA ✓ Pass

Large Text (above 18pt) WCAG AAA ✓ Pass

Any Text WCAG AAA ✓ Pass

If you want to check with other color combinations, try the [Color Contrast Checker](#).

Hex DFBDAE Background



This preview shows how black text looks on a background with the Hex color DFBDAE.

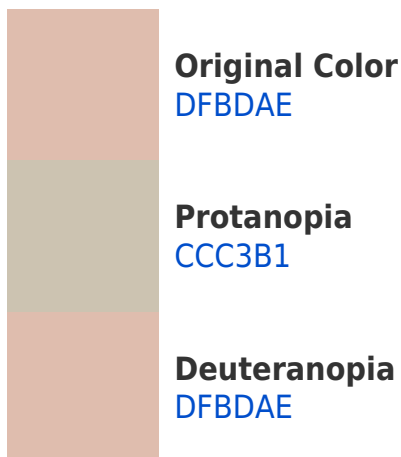


This preview shows how white text looks on a background with the Hex color DFBDAE.

Color Blindness Simulation

Color vision deficiency is a very complex topic, and I could not describe the different causes any better than Wikipedia does, so if you want to learn more, you should check out their [article about color blindness](#).

Dichromacy





Tritanopia
E2B9C8

Trichromacy



Original Color
DFBDAE

Protanomaly
D3C1B0

Deuteranomaly
DFBDAE

Tritanomaly
E1BABF

Monochromacy



Original Color
DFBDAE

Achromatopsia
C5C5C5

Achromatomaly
CEC2BD

CSS Examples

Text

The CSS property to change the color of the text to Hex DFBD4E is called "color". The color property can be set on classes, ids or directly on the HTML element.

This example shows how text in the color #DFBD4E looks like.

```
.text, #text, p{  
    color:#DFBD4E  
}
```

If you want to add a text shadow in that color use the text-shadow property, you can generate a text shadow directly with our [CSS Text Shadow Generator](#).

Here you see how black text with a 4 pixel #DFBDAE colored shadow looks like.

```
.shadow{ text-shadow: 4px 4px 2px #DFBDAE
}
```

Border

The CSS property to change the border of an element to Hex DFBDAE is called "border". The border property can be set on classes, ids or directly on the HTML element.

This example shows the color as border, it can be applied via the CSS property "border" or "border-color".

```
.border, #border, table{ border:4px solid
#DFBDAE }
```

If only the border color should be changed use the property `border-color`.

```
.border{ border-color:#DFBDAE }
```

If you want to add a box shadow in that color use:

Here you see how a box with a 4 pixel #DFBDAE colored shadow looks like.

```
.boxshadow{ -moz-box-shadow:4px 4px 4px  
4px #DFBDAE; -webkit-box-shadow:4px 4px  
4px 4px #DFBDAE; box-shadow:4px 4px 4px  
4px #DFBDAE }
```

Background

The CSS property to change the background color of an element to Hex DFBDAE is called "background". The background property can be set on classes, ids or directly on the HTML element.

```
.background, #background, body{  
background:#DFBDAE }
```

If only the background color should be changed can be used:

```
.background{ background-color:#DFBDAE }
```

This example shows the color as background, it is applied via the CSS property "background".

To optimize and compress your CSS code, you can use our [online CSS compressor and optimizer](#) based on csstidy. If you want to create a linear or radial gradient as background or border, check our [CSS Gradient Generator](#).

Hey! You found this booklet interesting? Support Converting Colors with the new Membership Option!

The pro membership hides all ads, plus gives you double the colors in the color bucket, and more awesome pro features!

[Learn more, Memberships starting at \\$2.50/m!](#)

**Follow me
on Twitter!**

@ConvertingColor