

Converting Colors

Hex(DFBFCA)

Have a look what the booklet for
Hex(DFBFCA) contains.

Hex(DFBFCA)	3
<i>Conversions</i>	4
<i>Details</i>	6
<i>Harmonies</i>	11
<i>Previews</i>	23
<i>Color Blindness Simulation</i>	26
<i>CSS Examples</i>	29

Color

Hex(DFBFCA)

Conversions

Conversions Part 1

Format	Color
Hex	DFBFCA
RGB	223, 191, 202
RGB Percent	87%, 75%, 79%
CMY	0.1255, 0.2510, 0.2078
CMYK	0.00, 0.14, 0.09, 0.13
HSL	339°, 33%, 81%
HSV	339°, 14%, 87%
XYZ	59.7229, 57.2138, 63.7728
YIQ	201.8220, 15.5410, 10.2050

Conversions

Conversions Part 2

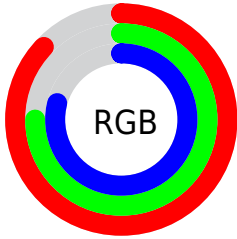
Format	Color
R_{YB}	223, 191, 202
Decimal	14663626
CIE _{Lab}	80.30, 13.17, -1.30
CIE _{LCh}	80, 13.236, 354.356
Yxy	57.2138, 0.3305, 0.3166
Android (android.graphics.Color)	4292853706 (0xFFDFBFCA)
YUV	201.8220, 0.0878, 18.5731
Hunter-Lab	75.6398, 8.5684, 2.9599

Details

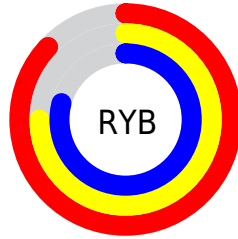
The Hex color **DFBFCA** is a light color, and the websafe version is hex **FFCCCC**. A complement of this color would be **BFD4D4**, and the grayscale version is **CACACA**.

A 20% lighter version of the original color is **FFF7FF**, and **A88A94** is the 20% darker color. If you saturate the color by 10%, you get **DFA9BB**, and if you desaturate by 10%, it is **DFD5D9**.

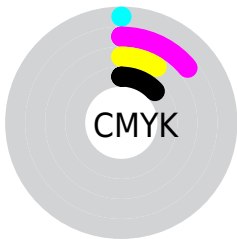
Distribution



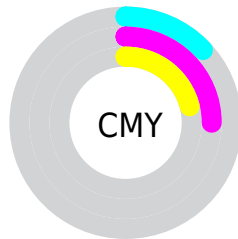
- Red (87%)
- Green (75%)
- Blue (79%)



- Red (87%)
- Yellow (75%)
- Blue (79%)



- Cyan (0%)
- Magenta (14%)
- Yellow (9%)
- Black (13%)



- Cyan (13%)
- Magenta (25%)
- Yellow (21%)

Brightness & Saturation Gradients

These gradients show how the Hex color DFBFCA changes by changing the brightness by 10 percent. The first figure shows a shift by +10% for each color and the second figure -10%.

Similar to the brightness gradients but the following saturation gradients show a change of the Hex color DFBFCA by changing the saturation by 10% instead.

 DFBFCA

FFFFFF

 FFF7FF

 DFBFCA

 C3A4AF

 A88A94

 8D707A

 735861

 5A404A

 432A33

 2C151E

 1A0005

 000000

 `DFBFCA`

 `DFBFCA`

 `DFA9BB`

 `DFD5D9`

 `DF92AD`

 `DFECE7`

 `DF7C9E`

 `DFFFF6`

 `DF668F`

 `DFFFFFF`

 `DF5081`

 `DF3972`

 `DF2364`

 `DF0D55`

 `DF004D`

Harmonies

Analogous

The Analogous color harmony consists of three colors that are next to each other on the color wheel.



D5C1D6



DFBFCA



E2BFBE

Triad

The Triadic color harmony groups three colors that are evenly spaced from another and form a triangle on the color wheel.



DFBFCA



C6CAB1



ACCCDB

Complementary

The Complementary color scheme is a pair of colors which are on the opposite of each other on the color wheel.



DFBFCA



BFD4D4

Split Complementary

Split-complementary colors differ from the complementary color scheme. The scheme consists of three colors, the original color and two neighbors of the complement color.



A8CED1



DFBFCA



B8CDB8

Square

The Square scheme is like the rectangle color scheme, but the four colors are evenly spaced on the color wheel.



DFBFCA



D4C6AF



ADCEC4



B7C9DF

Rectangle

The Rectangle color scheme consists of four colors that form a rectangle on the color wheel.



DFBFCA



E0C1B6



ADCEC4



AACDD8

Sweetspot

The Sweet Spot groups the original color and five complimentary colors.



DFBFCA



FFF5F8



D4BFDF



80797B



000000



808080

Same Dimension

The Same Dimension uses a secret algorithm to generate beautiful new colors.



DFBFCA



FFD4E3



DFC4BF



706569



B0003C



300011

Inverse Universe

The Inverse Universe completely reimagines the original color for something new.



DFBFCA



FFD4E3



BFDADF



706569



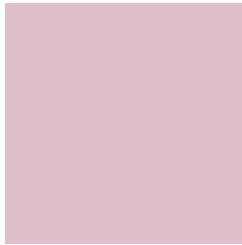
B0003C



300011

Previews

White Background



This preview shows how the Hex color DFBFCA looks on a white background.

Color Contrast Check

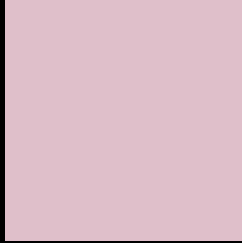
Large Text (above 18pt) WCAG AA × Fail

Any Text WCAG AA × Fail

Large Text (above 18pt) WCAG AAA × Fail

Any Text WCAG AAA × Fail

Black Background



This preview shows how the Hex color DFBFCA looks on a black background.

Color Contrast Check

Large Text (above 18pt) WCAG AA ✓ Pass

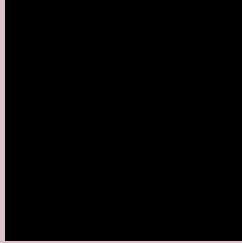
Any Text WCAG AA ✓ Pass

Large Text (above 18pt) WCAG AAA ✓ Pass

Any Text WCAG AAA ✓ Pass

If you want to check with other color combinations, try the [Color Contrast Checker](#).

Hex DFBFCA Background



This preview shows how black text looks on a background with the Hex color DFBFCA.

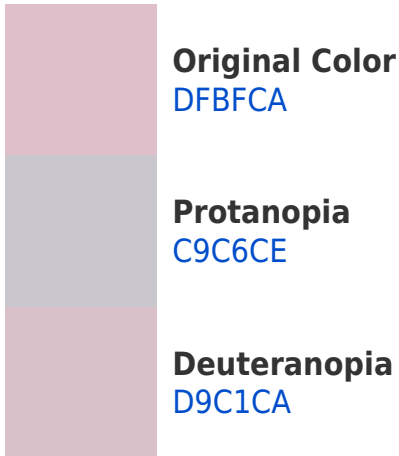


This preview shows how white text looks on a background with the Hex color DFBFCA.

Color Blindness Simulation

Color vision deficiency is a very complex topic, and I could not describe the different causes any better than Wikipedia does, so if you want to learn more, you should check out their [article about color blindness](#).

Dichromacy



Trichromacy



Original Color
DFBFCA

Protanomaly
D1C3CD

Deuteranomaly
DBC0CA

Tritanomaly
DFBECC

Monochromacy



Original Color
DFBFCA

Achromatopsia
CACACA

Achromatomaly
D2C6CA

CSS Examples

Text

The CSS property to change the color of the text to Hex DFBFCA is called "color". The color property can be set on classes, ids or directly on the HTML element.

This example shows how text in the color #DFBFCA looks like.

```
.text, #text, p{  
    color:#DFBFCA  
}
```

If you want to add a text shadow in that color use the text-shadow property, you can generate a text shadow directly with our [CSS Text Shadow Generator](#).

Here you see how black text with a 4 pixel #DFBFCA colored shadow looks like.

```
.shadow{ text-shadow: 4px 4px 2px #DFBFCA
}
```

Border

The CSS property to change the border of an element to Hex DFBFCA is called "border". The border property can be set on classes, ids or directly on the HTML element.

This example shows the color as border, it can be applied via the CSS property "border" or "border-color".

```
.border, #border, table{ border:4px solid
#DFBFCA }
```

If only the border color should be changed use the property `border-color`.

```
.border{ border-color:#DFBFCA }
```

If you want to add a box shadow in that color use:

Here you see how a box with a 4 pixel #DFBFCA colored shadow looks like.

```
.boxshadow{ -moz-box-shadow:4px 4px 4px  
4px #DFBFCA; -webkit-box-shadow:4px 4px  
4px 4px #DFBFCA; box-shadow:4px 4px 4px  
4px #DFBFCA }
```

Background

The CSS property to change the background color of an element to Hex DFBFCA is called "background". The background property can be set on classes, ids or directly on the HTML element.

```
.background, #background, body{  
background:#DFBFCA }
```

If only the background color should be changed can be used:

```
.background{ background-color:#DFBFCA }
```

This example shows the color as background, it is applied via the CSS property "background".

To optimize and compress your CSS code, you can use our [online CSS compressor and optimizer](#) based on csstidy. If you want to create a linear or radial gradient as background or border, check our [CSS Gradient Generator](#).

Hey! You found this booklet interesting? Support Converting Colors with the new Membership Option!

The pro membership hides all ads, plus gives you double the colors in the color bucket, and more awesome pro features!

[Learn more, Memberships starting at \\$2.50/m!](#)

**Follow me
on Twitter!**

@ConvertingColor