

Converting Colors

Hex(DFC1C8)

Have a look what the booklet for
Hex(DFC1C8) contains.

Hex(DFC1C8)	3
<i>Conversions</i>	4
<i>Details</i>	6
<i>Harmonies</i>	11
<i>Previews</i>	23
<i>Color Blindness Simulation</i>	26
<i>CSS Examples</i>	29

Color

Hex(DFC1C8)

Conversions

Conversions Part 1

Format	Color
Hex	DFC1C8
RGB	223, 193, 200
RGB Percent	87%, 76%, 78%
CMY	0.1255, 0.2431, 0.2157
CMYK	0.00, 0.13, 0.10, 0.13
HSL	346°, 32%, 82%
HSV	346°, 13%, 87%
XYZ	59.9267, 57.9980, 62.6798
YIQ	202.7680, 15.6330, 8.5370

Conversions

Conversions Part 2

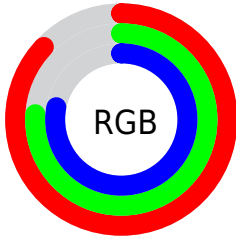
Format	Color
R _Y B	223, 193, 200
Decimal	14664136
CIE Lab	80.74, 11.77, 0.41
CIE LCh	81, 11.778, 2.019
Yxy	57.9980, 0.3318, 0.3211
Android (android.graphics.Color)	4292854216 (0xFFDFC1C8)
YUV	202.7680, -1.3646, 17.7435
Hunter-Lab	76.1564, 7.1860, 4.5114

Details

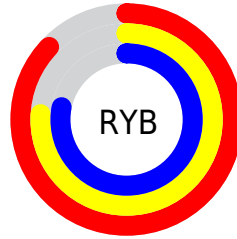
The Hex color **DFC1C8** is a light color, and the websafe version is hex **FFCCCC**. A complement of this color would be **C1DFD8**, and the grayscale version is **CBCBCB**.

A 20% lighter version of the original color is **FFF9FF**, and **A88B92** is the 20% darker color. If you saturate the color by 10%, you get **DFABB7**, and if you desaturate by 10%, it is **DFD7D9**.

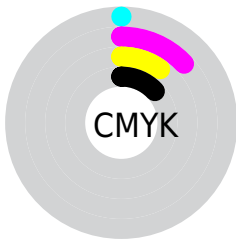
Distribution



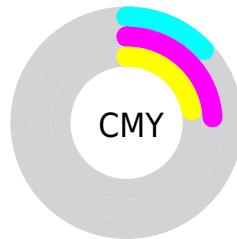
- Red (87%)
- Green (76%)
- Blue (78%)



- Red (87%)
- Yellow (76%)
- Blue (78%)



- Cyan (0%)
- Magenta (13%)
- Yellow (10%)
- Black (13%)



- Cyan (13%)
- Magenta (24%)
- Yellow (22%)

Brightness & Saturation Gradients

These gradients show how the Hex color DFC1C8 changes by changing the brightness by 10 percent. The first figure shows a shift by +10% for each color and the second figure -10%.

Similar to the brightness gradients but the following saturation gradients show a change of the Hex color DFC1C8 by changing the saturation by 10% instead.

 DFC1C8

 DFC1C8

FFFFFF

 C3A6AD

 FFF9FF

 A88B92

 8D7278

 735960

 5A4248

 432C32

 2C171D

 1A0002

 000000

 DFC1C8

 DFC1C8

 DFABB7

 DFD7D9

 DF94A6

 DFEEEA

 DF7E95

 DFFFFB

 DF6884

 DFFFFF

 DF5273

 DF3B61

 DF2550

 DF0F3F

 DF0034

Harmonies

Analogous

The Analogous color harmony consists of three colors that are next to each other on the color wheel.



D8C2D3



DFC1C8



E0C2BD

Triad

The Triadic color harmony groups three colors that are evenly spaced from another and form a triangle on the color wheel.



DFC1C8



C4CBB6



B2CCDB

Complementary

The Complementary color scheme is a pair of colors which are on the opposite of each other on the color wheel.



DFC1C8



C1DFD8

Split Complementary

Split-complementary colors differ from the complementary color scheme. The scheme consists of three colors, the original color and two neighbors of the complement color.



ADCED4



DFC1C8



B8CEBE

Square

The Square scheme is like the rectangle color scheme, but the four colors are evenly spaced on the color wheel.



DFC1C8



D1C8B3



AFCFC9



BEC9DE

Rectangle

The Rectangle color scheme consists of four colors that form a rectangle on the color wheel.



DFC1C8



DDC3B7



AFCFC9



B0CDD9

Sweetspot

The Sweet Spot groups the original color and five complimentary colors.



DFC1C8



FFF5F7



D8C1DF



80797B



000000



808080

Same Dimension

The Same Dimension uses a secret algorithm to generate beautiful new colors.



DFC1C8



FFD6E0



DFC9C1



706568



B00029



30000B

Inverse Universe

The Inverse Universe completely reimagines the original color for something new.



DFC1C8



FFD6E0



C1D7DF



706568



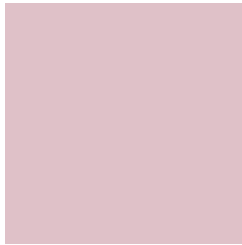
B00029



30000B

Previews

White Background



This preview shows how the Hex color DFC1C8 looks on a white background.

Color Contrast Check

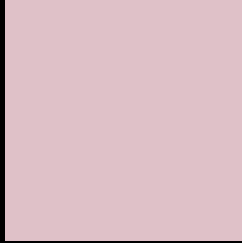
Large Text (above 18pt) WCAG AA × Fail

Any Text WCAG AA × Fail

Large Text (above 18pt) WCAG AAA × Fail

Any Text WCAG AAA × Fail

Black Background



This preview shows how the Hex color DFC1C8 looks on a black background.

Color Contrast Check

Large Text (above 18pt) WCAG AA ✓ Pass

Any Text WCAG AA ✓ Pass

Large Text (above 18pt) WCAG AAA ✓ Pass

Any Text WCAG AAA ✓ Pass

If you want to check with other color combinations, try the [Color Contrast Checker](#).

Hex DFC1C8 Background



This preview shows how black text looks on a background with the Hex color DFC1C8.

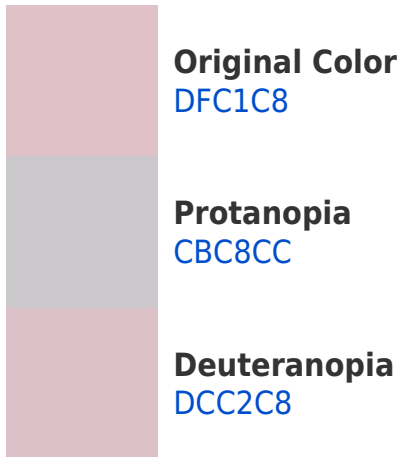


This preview shows how white text looks on a background with the Hex color DFC1C8.

Color Blindness Simulation

Color vision deficiency is a very complex topic, and I could not describe the different causes any better than Wikipedia does, so if you want to learn more, you should check out their [article about color blindness](#).

Dichromacy



Trichromacy



Original Color
DFC1C8

Protanomaly
D2C5CB

Deuteranomaly
DDC2C8

Tritanomaly
E0C0CC

Monochromacy



Original Color
DFC1C8

Achromatopsia
CBCBCB

Achromatomaly
D2C7CA

CSS Examples

Text

The CSS property to change the color of the text to Hex DFC1C8 is called "color". The color property can be set on classes, ids or directly on the HTML element.

This example shows how text in the color #DFC1C8 looks like.

```
.text, #text, p{  
    color:#DFC1C8  
}
```

If you want to add a text shadow in that color use the text-shadow property, you can generate a text shadow directly with our [CSS Text Shadow Generator](#).

Here you see how black text with a 4 pixel #DFC1C8 colored shadow looks like.

```
.shadow{ text-shadow: 4px 4px 2px #DFC1C8 }  
}
```

Border

The CSS property to change the border of an element to Hex DFC1C8 is called "border". The border property can be set on classes, ids or directly on the HTML element.

This example shows the color as border, it can be applied via the CSS property "border" or "border-color".

```
.border, #border, table{ border:4px solid #DFC1C8 }  
}
```

If only the border color should be changed use the property `border-color`.

```
.border{ border-color:#DFC1C8 }
```

If you want to add a box shadow in that color use:

Here you see how a box with a 4 pixel #DFC1C8 colored shadow looks like.

```
.boxshadow{ -moz-box-shadow:4px 4px 4px  
4px #DFC1C8; -webkit-box-shadow:4px 4px  
4px 4px #DFC1C8; box-shadow:4px 4px 4px  
4px #DFC1C8 }
```

Background

The CSS property to change the background color of an element to Hex DFC1C8 is called "background". The background property can be set on classes, ids or directly on the HTML element.

```
.background, #background, body{  
background:#DFC1C8 }
```

If only the background color should be changed can be used:

```
.background{ background-color:#DFC1C8 }
```

This example shows the color as background, it is applied via the CSS property "background".

To optimize and compress your CSS code, you can use our [online CSS compressor and optimizer](#) based on csstidy. If you want to create a linear or radial gradient as background or border, check our [CSS Gradient Generator](#).

Hey! You found this booklet interesting? Support Converting Colors with the new Membership Option!

The pro membership hides all ads, plus gives you double the colors in the color bucket, and more awesome pro features!

[Learn more, Memberships starting at \\$2.50/m!](#)

**Follow me
on Twitter!**

@ConvertingColor