

Converting Colors

Hex(DFC1C9)

Have a look what the booklet for
Hex(DFC1C9) contains.

Hex(DFC1C9)	3
<i>Conversions</i>	4
<i>Details</i>	6
<i>Harmonies</i>	11
<i>Previews</i>	23
<i>Color Blindness Simulation</i>	26
<i>CSS Examples</i>	29

Color

Hex(DFC1C9)

Conversions

Conversions Part 1

Format	Color
Hex	DFC1C9
RGB	223, 193, 201
RGB Percent	87%, 76%, 79%
CMY	0.1255, 0.2431, 0.2118
CMYK	0.00, 0.13, 0.10, 0.13
HSL	344°, 32%, 82%
HSV	344°, 13%, 87%
XYZ	60.0440, 58.0449, 63.2975
YIQ	202.8820, 15.3120, 8.8480

Conversions

Conversions Part 2

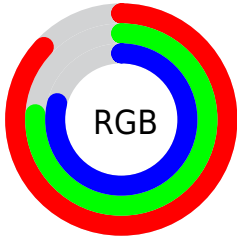
Format	Color
R _Y B	223, 193, 201
Decimal	14664137
CIE Lab	80.76, 11.94, -0.08
CIE LCh	81, 11.938, 359.593
Yxy	58.0449, 0.3310, 0.3200
Android (android.graphics.Color)	4292854217 (0xFFDFC1C9)
YUV	202.8820, -0.9278, 17.6435
Hunter-Lab	76.1872, 7.3502, 4.0721

Details

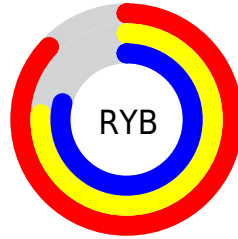
The Hex color **DFC1C9** is a light color, and the websafe version is hex **FFCCCC**. A complement of this color would be **C1DFD7**, and the grayscale version is **CBCBCB**.

A 20% lighter version of the original color is **FFF9FF**, and **A88B93** is the 20% darker color. If you saturate the color by 10%, you get **DFABB9**, and if you desaturate by 10%, it is **DFD7D9**.

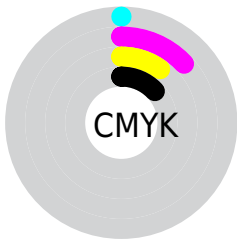
Distribution



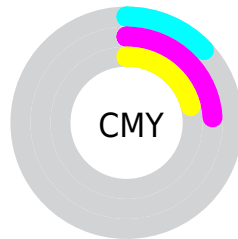
- Red (87%)
- Green (76%)
- Blue (79%)



- Red (87%)
- Yellow (76%)
- Blue (79%)



- Cyan (0%)
- Magenta (13%)
- Yellow (10%)
- Black (13%)



- Cyan (13%)
- Magenta (24%)
- Yellow (21%)

Brightness & Saturation Gradients

These gradients show how the Hex color DFC1C9 changes by changing the brightness by 10 percent. The first figure shows a shift by +10% for each color and the second figure -10%.

Similar to the brightness gradients but the following saturation gradients show a change of the Hex color DFC1C9 by changing the saturation by 10% instead.

 DFC1C9

FFFFFF

 FFF9FF

 DFC1C9

 C3A6AE

 A88B93

 8D7279

 735961

 5A4249

 432C32

 2C171D

 1A0004

 000000

 DFC1C9

 DFC1C9

 DFABB9

 DFD7D9

 DF94A8

 DFEEEE

 DF7E98

 DFFFFA

 DF6888

 DFFFFFF

 DF5277

 DF3B67

 DF2557

 DF0F46

 DF003B

Harmonies

Analogous

The Analogous color harmony consists of three colors that are next to each other on the color wheel.



D7C3D4



DFC1C9



E1C2BE

Triad

The Triadic color harmony groups three colors that are evenly spaced from another and form a triangle on the color wheel.



DFC1C9



C5CBB5



B1CDDB

Complementary

The Complementary color scheme is a pair of colors which are on the opposite of each other on the color wheel.



DFC1C9



C1DFD7

Split Complementary

Split-complementary colors differ from the complementary color scheme. The scheme consists of three colors, the original color and two neighbors of the complement color.



ADCFD3



DFC1C9



B9CEBD

Square

The Square scheme is like the rectangle color scheme, but the four colors are evenly spaced on the color wheel.



DFC1C9



D2C8B2



B0CFC8



BDC9DF

Rectangle

The Rectangle color scheme consists of four colors that form a rectangle on the color wheel.



DFC1C9



DEC3B8



B0CFC8



AFCED9

Sweetspot

The Sweet Spot groups the original color and five complimentary colors.



DFC1C9



FFF5F8



D7C1DF



80797B



000000



808080

Same Dimension

The Same Dimension uses a secret algorithm to generate beautiful new colors.



DFC1C9



FFD6E1



DFC8C1



706568



B0002F



30000D

Inverse Universe

The Inverse Universe completely reimagines the original color for something new.



DFC1C9



FFD6E1



C1D8DF



706568



B0002F



30000D

Previews

White Background



This preview shows how the Hex color DFC1C9 looks on a white background.

Color Contrast Check

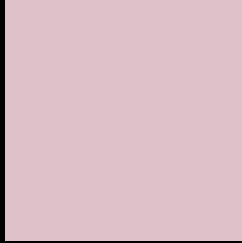
Large Text (above 18pt) WCAG AA × Fail

Any Text WCAG AA × Fail

Large Text (above 18pt) WCAG AAA × Fail

Any Text WCAG AAA × Fail

Black Background



This preview shows how the Hex color DFC1C9 looks on a black background.

Color Contrast Check

Large Text (above 18pt) WCAG AA ✓ Pass

Any Text WCAG AA ✓ Pass

Large Text (above 18pt) WCAG AAA ✓ Pass

Any Text WCAG AAA ✓ Pass

If you want to check with other color combinations, try the [Color Contrast Checker](#).

Hex DFC1C9 Background



This preview shows how black text looks on a background with the Hex color DFC1C9.

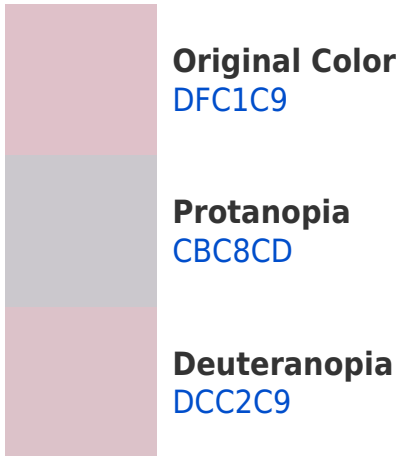


This preview shows how white text looks on a background with the Hex color DFC1C9.

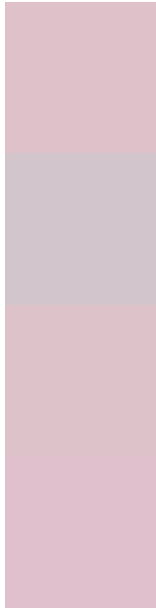
Color Blindness Simulation

Color vision deficiency is a very complex topic, and I could not describe the different causes any better than Wikipedia does, so if you want to learn more, you should check out their [article about color blindness](#).

Dichromacy



Trichromacy



Original Color
DFC1C9

Protanomaly
D2C5CC

Deuteranomaly
DDC2C9

Tritanomaly
E0C0CD

Monochromacy



Original Color
DFC1C9

Achromatopsia
CBCBCB

Achromatomaly
D2C7CA

CSS Examples

Text

The CSS property to change the color of the text to Hex DFC1C9 is called "color". The color property can be set on classes, ids or directly on the HTML element.

This example shows how text in the color #DFC1C9 looks like.

```
.text, #text, p{  
    color:#DFC1C9  
}
```

If you want to add a text shadow in that color use the text-shadow property, you can generate a text shadow directly with our [CSS Text Shadow Generator](#).

Here you see how black text with a 4 pixel #DFC1C9 colored shadow looks like.

```
.shadow{ text-shadow: 4px 4px 2px #DFC1C9
}
```

Border

The CSS property to change the border of an element to Hex DFC1C9 is called "border". The border property can be set on classes, ids or directly on the HTML element.

This example shows the color as border, it can be applied via the CSS property "border" or "border-color".

```
.border, #border, table{ border:4px solid
#DFC1C9 }
```

If only the border color should be changed use the property `border-color`.

```
.border{ border-color:#DFC1C9 }
```

If you want to add a box shadow in that color use:

Here you see how a box with a 4 pixel #DFC1C9 colored shadow looks like.

```
.boxshadow{ -moz-box-shadow:4px 4px 4px  
4px #DFC1C9; -webkit-box-shadow:4px 4px  
4px 4px #DFC1C9; box-shadow:4px 4px 4px  
4px #DFC1C9 }
```

Background

The CSS property to change the background color of an element to Hex DFC1C9 is called "background". The background property can be set on classes, ids or directly on the HTML element.

```
.background, #background, body{  
background:#DFC1C9 }
```

If only the background color should be changed can be used:

```
.background{ background-color:#DFC1C9 }
```

This example shows the color as background, it is applied via the CSS property "background".

To optimize and compress your CSS code, you can use our [online CSS compressor and optimizer](#) based on csstidy. If you want to create a linear or radial gradient as background or border, check our [CSS Gradient Generator](#).

Hey! You found this booklet interesting? Support Converting Colors with the new Membership Option!

The pro membership hides all ads, plus gives you double the colors in the color bucket, and more awesome pro features!

[Learn more, Memberships starting at \\$2.50/m!](#)

**Follow me
on Twitter!**

@ConvertingColor