

Converting Colors

Hex(DFC2AC)

Have a look what the booklet for
Hex(DFC2AC) contains.

Hex(DFC2AC)	3
<i>Conversions</i>	4
<i>Details</i>	6
<i>Harmonies</i>	11
<i>Previews</i>	23
<i>Color Blindness Simulation</i>	26
<i>CSS Examples</i>	29

Color

Hex(DFC2AC)

Conversions

Conversions Part 1

Format	Color
Hex	DFC2AC
RGB	223, 194, 172
RGB Percent	87%, 76%, 67%
CMY	0.1255, 0.2392, 0.3255
CMYK	0.00, 0.13, 0.23, 0.13
HSL	26°, 44%, 77%
HSV	26°, 23%, 87%
XYZ	57.1696, 57.2501, 47.0669
YIQ	200.1630, 24.3460, -0.6940

Conversions

Conversions Part 2

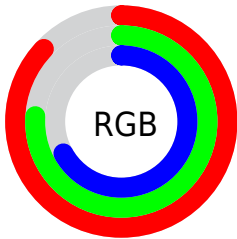
Format	Color
R _Y B	223, 211, 172
Decimal	14664364
CIE Lab	80.32, 6.89, 14.85
CIE LCh	80, 16.369, 65.099
Yxy	57.2501, 0.3540, 0.3545
Android (android.graphics.Color)	4292854444 (0xFFDFC2AC)
YUV	200.1630, -13.8844, 20.0280
Hunter-Lab	75.6638, 2.4583, 16.0831

Details

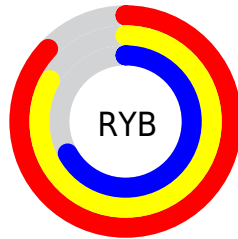
The Hex color **DFC2AC** is a light color, and the websafe version is hex **FFCCCC**. A complement of this color would be **ACC9DF**, and the grayscale version is **C8C8C8**.

A 20% lighter version of the original color is **FFFAE3**, and **A78C78** is the 20% darker color. If you saturate the color by 10%, you get **DFB596**, and if you desaturate by 10%, it is **DFCFC2**.

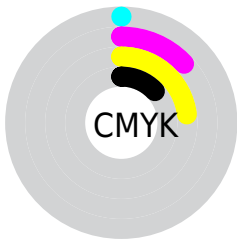
Distribution



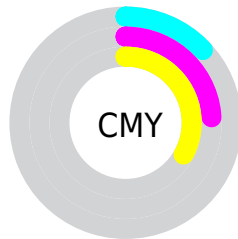
- Red (87%)
- Green (76%)
- Blue (67%)



- Red (87%)
- Yellow (83%)
- Blue (67%)



- Cyan (0%)
- Magenta (13%)
- Yellow (23%)
- Black (13%)



- Cyan (13%)
- Magenta (24%)
- Yellow (33%)

Brightness & Saturation Gradients

These gradients show how the Hex color DFC2AC changes by changing the brightness by 10 percent. The first figure shows a shift by +10% for each color and the second figure -10%.

Similar to the brightness gradients but the following saturation gradients show a change of the Hex color DFC2AC by changing the saturation by 10% instead.

 DFC2AC

FFFFFF

 FFFAE3

 DFC2AC

 C3A791

 A78C78

 8C735F

 725A47

 594331

 412D1B

 2B1802

 120000

 000000

 DFC2AC

 DFC2AC

 DFB596

 DFCFC2

 DFA97F

 DFDDBD9

 DF9C69

 DFE8EF

 DF8F53

 DFF5FF

 DF833D

 DFFFFFF

 DF7626

 DF6910

 DF6000

Harmonies

Analogous

The Analogous color harmony consists of three colors that are next to each other on the color wheel.



E7BEB6



DFC2AC



D1C7A9

Triad

The Triadic color harmony groups three colors that are evenly spaced from another and form a triangle on the color wheel.



DFC2AC



A3D0C9



CDC3E0

Complementary

The Complementary color scheme is a pair of colors which are on the opposite of each other on the color wheel.



DFC2AC



ACC9DF

Split Complementary

Split-complementary colors differ from the complementary color scheme. The scheme consists of three colors, the original color and two neighbors of the complement color.



BAC8E5



DFC2AC



A0CFD8

Square

The Square scheme is like the rectangle color scheme, but the four colors are evenly spaced on the color wheel.



DFC2AC



AFCFBA



A9CCE2



DEBED4

Rectangle

The Rectangle color scheme consists of four colors that form a rectangle on the color wheel.



DFC2AC



C5CAAB



A9CCE2



C7C4E3

Sweetspot

The Sweet Spot groups the original color and five complimentary colors.



DFC2AC



FFF5ED



DFACCA



807A75



000000



808080

Same Dimension

The Same Dimension uses a secret algorithm to generate beautiful new colors.



DFC2AC



FFD8BA



DFDBAC



706A65



B04C00



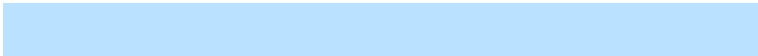
301500

Inverse Universe

The Inverse Universe completely reimagines the original color for something new.



ACC9DF



BAE1FF



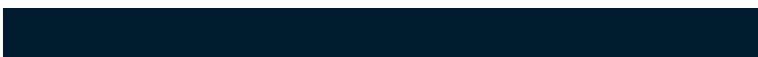
ACB0DF



656B70



0064B0



001C30

Previews

White Background



This preview shows how the Hex color DFC2AC looks on a white background.

Color Contrast Check

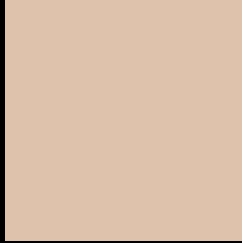
Large Text (above 18pt) WCAG AA × Fail

Any Text WCAG AA × Fail

Large Text (above 18pt) WCAG AAA × Fail

Any Text WCAG AAA × Fail

Black Background



This preview shows how the Hex color DFC2AC looks on a black background.

Color Contrast Check

Large Text (above 18pt) WCAG AA ✓ Pass

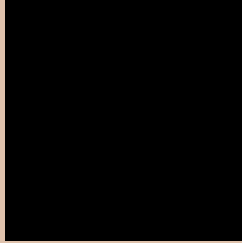
Any Text WCAG AA ✓ Pass

Large Text (above 18pt) WCAG AAA ✓ Pass

Any Text WCAG AAA ✓ Pass

If you want to check with other color combinations, try the [Color Contrast Checker](#).

Hex DFC2AC Background



This preview shows how black text looks on a background with the Hex color DFC2AC.

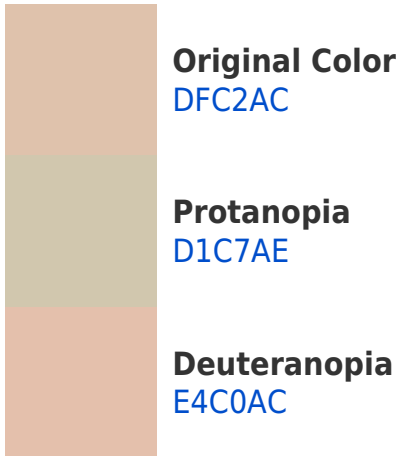


This preview shows how white text looks on a background with the Hex color DFC2AC.

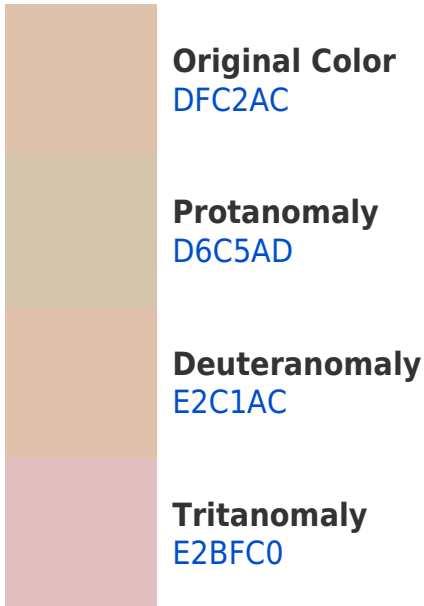
Color Blindness Simulation

Color vision deficiency is a very complex topic, and I could not describe the different causes any better than Wikipedia does, so if you want to learn more, you should check out their [article about color blindness](#).

Dichromacy



Trichromacy



Monochromacy



CSS Examples

Text

The CSS property to change the color of the text to Hex DFC2AC is called "color". The color property can be set on classes, ids or directly on the HTML element.

This example shows how text in the color #DFC2AC looks like.

```
.text, #text, p{  
    color:#DFC2AC  
}
```

If you want to add a text shadow in that color use the text-shadow property, you can generate a text shadow directly with our [CSS Text Shadow Generator](#).

Here you see how black text with a 4 pixel #DFC2AC colored shadow looks like.

```
.shadow{ text-shadow: 4px 4px 2px #DFC2AC  
}
```

Border

The CSS property to change the border of an element to Hex DFC2AC is called "border". The border property can be set on classes, ids or directly on the HTML element.

This example shows the color as border, it can be applied via the CSS property "border" or "border-color".

```
.border, #border, table{ border:4px solid  
#DFC2AC }
```

If only the border color should be changed use the property `border-color`.

```
.border{ border-color:#DFC2AC }
```

If you want to add a box shadow in that color use:

Here you see how a box with a 4 pixel #DFC2AC colored shadow looks like.

```
.boxshadow{ -moz-box-shadow:4px 4px 4px  
4px #DFC2AC; -webkit-box-shadow:4px 4px  
4px 4px #DFC2AC; box-shadow:4px 4px 4px  
4px #DFC2AC }
```

Background

The CSS property to change the background color of an element to Hex DFC2AC is called "background". The background property can be set on classes, ids or directly on the HTML element.

```
.background, #background, body{  
background:#DFC2AC }
```

If only the background color should be changed can be used:

```
.background{ background-color:#DFC2AC }
```

This example shows the color as background, it is applied via the CSS property "background".

To optimize and compress your CSS code, you can use our [online CSS compressor and optimizer](#) based on csstidy. If you want to create a linear or radial gradient as background or border, check our [CSS Gradient Generator](#).

Hey! You found this booklet interesting? Support Converting Colors with the new Membership Option!

The pro membership hides all ads, plus gives you double the colors in the color bucket, and more awesome pro features!

[Learn more, Memberships starting at \\$2.50/m!](#)

**Follow me
on Twitter!**

@ConvertingColor