

Converting Colors

Hex(DFC4A9)

Have a look what the booklet for
Hex(DFC4A9) contains.

Hex(DFC4A9)	3
<i>Conversions</i>	4
<i>Details</i>	6
<i>Harmonies</i>	11
<i>Previews</i>	23
<i>Color Blindness Simulation</i>	26
<i>CSS Examples</i>	29

Color

Hex(DFC4A9)

Conversions

Conversions Part 1

Format	Color
Hex	DFC4A9
RGB	223, 196, 169
RGB Percent	87%, 77%, 66%
CMY	0.1255, 0.2314, 0.3373
CMYK	0.00, 0.12, 0.24, 0.13
HSL	30°, 46%, 77%
HSV	30°, 24%, 87%
XYZ	57.3328, 58.0324, 45.7157
YIQ	200.9950, 24.7590, -2.6730

Conversions

Conversions Part 2

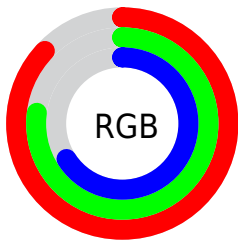
Format	Color
R _Y B	223, 223, 169
Decimal	14664873
CIE Lab	80.76, 5.41, 17.06
CIE LCh	81, 17.899, 72.405
Yxy	58.0324, 0.3559, 0.3603
Android (android.graphics.Color)	4292854953 (0xFFDFC4A9)
YUV	200.9950, -15.7735, 19.2984
Hunter-Lab	76.1790, 1.0269, 17.7448

Details

The Hex color **DFC4A9** is a light color, and the websafe version is hex **CCCC99**. A complement of this color would be **A9C4DF**, and the grayscale version is **C9C9C9**.

A 20% lighter version of the original color is **FFFDE0**, and **A78E75** is the 20% darker color. If you saturate the color by 10%, you get **DFB993**, and if you desaturate by 10%, it is **DFCFBF**.

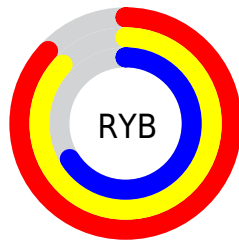
Distribution



Red (87%)

Green (77%)

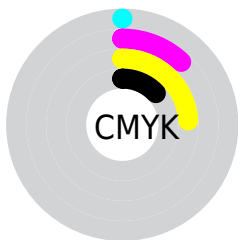
Blue (66%)



Red (87%)

Yellow (87%)

Blue (66%)

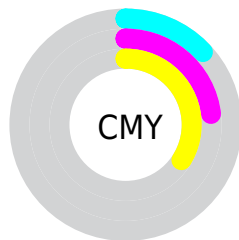


Cyan (0%)

Magenta (12%)

Yellow (24%)

Black (13%)



Cyan (13%)

Magenta (23%)

Yellow (34%)

Brightness & Saturation Gradients

These gradients show how the Hex color DFC4A9 changes by changing the brightness by 10 percent. The first figure shows a shift by +10% for each color and the second figure -10%.

Similar to the brightness gradients but the following saturation gradients show a change of the Hex color DFC4A9 by changing the saturation by 10% instead.

 DFC4A9

 DFC4A9

FFFFFF

 C3A98E

 FFFDE0

 A78E75

FFFFFFD

 8C755C

 725C44

 59452E

 412E19

 2B1A00

 110000

 000000

 DFC4A9

 DFC4A9

 DFB993

 DFCFBF

 DFAE7C

 DFDAD6

 DFA366

 DFE5EC

 DF9750

 DFF1FF

 DF8C3A

 DFFCFF

 DF8123

 DFFFFFF

 DF760D

 DF7000

Harmonies

Analogous

The Analogous color harmony consists of three colors that are next to each other on the color wheel.



EABFB3



DFC4A9



CECAA8

Triad

The Triadic color harmony groups three colors that are evenly spaced from another and form a triangle on the color wheel.



D4C2E1



9ED2CF



DFC4A9

Complementary

The Complementary color scheme is a pair of colors which are on the opposite of each other on the color wheel.



DFC4A9



A9C4DF

Split Complementary

Split-complementary colors differ from the complementary color scheme. The scheme consists of three colors, the original color and two neighbors of the complement color.



BFC8E9



DFC4A9



9ED1DE

Square

The Square scheme is like the rectangle color scheme, but the four colors are evenly spaced on the color wheel.



DFC4A9



AAD1BE



ABCDE8



E4BED3

Rectangle

The Rectangle color scheme consists of four colors that form a rectangle on the color wheel.



DFC4A9



C2CDAC



ABCDE8



CDC4E5

Sweetspot

The Sweet Spot groups the original color and five complimentary colors.



DFC4A9



FFF6ED



DFA9C4



807A75



000000



808080

Same Dimension

The Same Dimension uses a secret algorithm to generate beautiful new colors.



DFC4A9



FFDAB5



DFDFA9



706B65



B05800



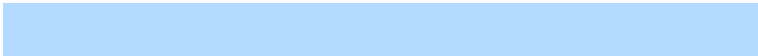
301800

Inverse Universe

The Inverse Universe completely reimagines the original color for something new.



A9C4DF



B5DAFF



A9A9DF



656B70



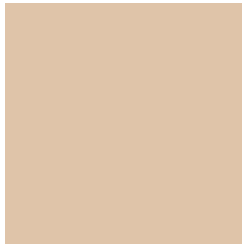
0058B0



001830

Previews

White Background



This preview shows how the Hex color DFC4A9 looks on a white background.

Color Contrast Check

Large Text (above 18pt) WCAG AA × Fail

Any Text WCAG AA × Fail

Large Text (above 18pt) WCAG AAA × Fail

Any Text WCAG AAA × Fail

Black Background



This preview shows how the Hex color DFC4A9 looks on a black background.

Color Contrast Check

Large Text (above 18pt) WCAG AA ✓ Pass

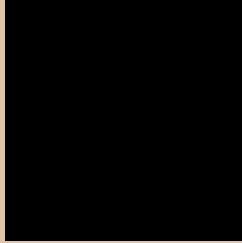
Any Text WCAG AA ✓ Pass

Large Text (above 18pt) WCAG AAA ✓ Pass

Any Text WCAG AAA ✓ Pass

If you want to check with other color combinations, try the [Color Contrast Checker](#).

Hex DFC4A9 Background



This preview shows how black text looks on a background with the Hex color DFC4A9.

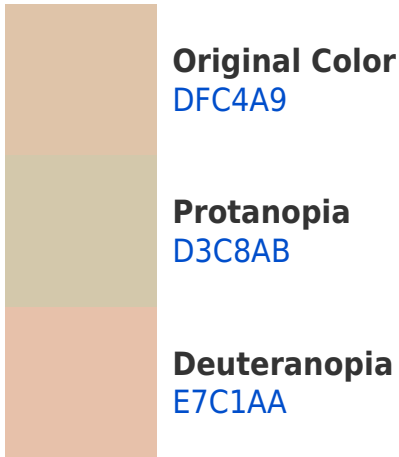


This preview shows how white text looks on a background with the Hex color DFC4A9.

Color Blindness Simulation

Color vision deficiency is a very complex topic, and I could not describe the different causes any better than Wikipedia does, so if you want to learn more, you should check out their [article about color blindness](#).

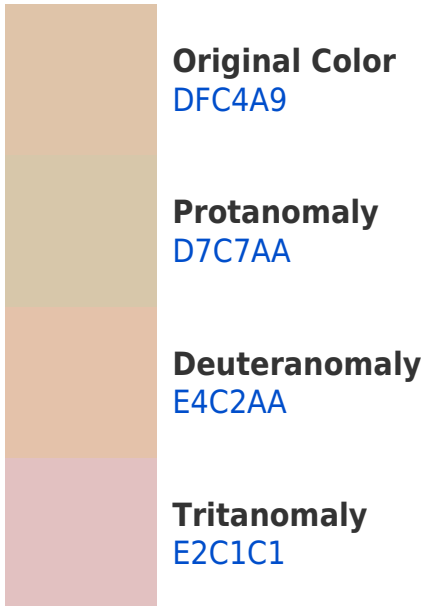
Dichromacy



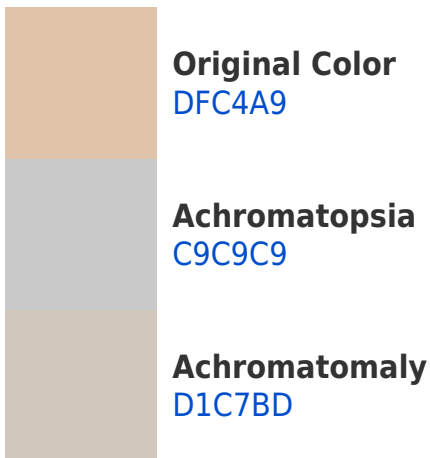


Tritanopia
E3BFCE

Trichromacy



Monochromacy



CSS Examples

Text

The CSS property to change the color of the text to Hex DFC4A9 is called "color". The color property can be set on classes, ids or directly on the HTML element.

This example shows how text in the color #DFC4A9 looks like.

```
.text, #text, p{  
    color:#DFC4A9  
}
```

If you want to add a text shadow in that color use the text-shadow property, you can generate a text shadow directly with our [CSS Text Shadow Generator](#).

Here you see how black text with a 4 pixel #DFC4A9 colored shadow looks like.

```
.shadow{ text-shadow: 4px 4px 2px #DFC4A9
}
```

Border

The CSS property to change the border of an element to Hex DFC4A9 is called "border". The border property can be set on classes, ids or directly on the HTML element.

This example shows the color as border, it can be applied via the CSS property "border" or "border-color".

```
.border, #border, table{ border:4px solid
#DFC4A9 }
```

If only the border color should be changed use the property `border-color`.

```
.border{ border-color:#DFC4A9 }
```

If you want to add a box shadow in that color use:

Here you see how a box with a 4 pixel #DFC4A9 colored shadow looks like.

```
.boxshadow{ -moz-box-shadow:4px 4px 4px  
4px #DFC4A9; -webkit-box-shadow:4px 4px  
4px 4px #DFC4A9; box-shadow:4px 4px 4px  
4px #DFC4A9 }
```

Background

The CSS property to change the background color of an element to Hex DFC4A9 is called "background". The background property can be set on classes, ids or directly on the HTML element.

```
.background, #background, body{  
background:#DFC4A9 }
```

If only the background color should be changed can be used:

```
.background{ background-color:#DFC4A9 }
```

This example shows the color as background, it is applied via the CSS property "background".

To optimize and compress your CSS code, you can use our [online CSS compressor and optimizer](#) based on csstidy. If you want to create a linear or radial gradient as background or border, check our [CSS Gradient Generator](#).

Hey! You found this booklet interesting? Support Converting Colors with the new Membership Option!

The pro membership hides all ads, plus gives you double the colors in the color bucket, and more awesome pro features!

[Learn more, Memberships starting at \\$2.50/m!](#)

**Follow me
on Twitter!**

@ConvertingColor