

Converting Colors

Hex(DFC4C6)

Have a look what the booklet for
Hex(DFC4C6) contains.

Hex(DFC4C6)	3
<i>Conversions</i>	4
<i>Details</i>	6
<i>Harmonies</i>	11
<i>Previews</i>	23
<i>Color Blindness Simulation</i>	26
<i>CSS Examples</i>	29

Color

Hex(DFC4C6)

Conversions

Conversions Part 1

Format	Color
Hex	DFC4C6
RGB	223, 196, 198
RGB Percent	87%, 77%, 78%
CMY	0.1255, 0.2314, 0.2235
CMYK	0.00, 0.12, 0.11, 0.13
HSL	356°, 30%, 82%
HSV	356°, 12%, 87%
XYZ	60.3644, 59.2450, 61.6800
YIQ	204.3010, 15.4500, 6.3460

Conversions

Conversions Part 2

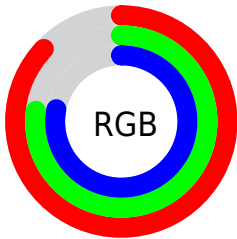
Format	Color
R _Y B	223, 196, 198
Decimal	14664902
CIE Lab	81.43, 9.84, 2.49
CIE LCh	81, 10.155, 14.201
Yxy	59.2450, 0.3330, 0.3268
Android (android.graphics.Color)	4292854982 (0xFFDFC4C6)
YUV	204.3010, -3.1064, 16.3990
Hunter-Lab	76.9708, 5.2898, 6.3680

Details

The Hex color **DFC4C6** is a light color, and the websafe version is hex **CCCCCC**. A complement of this color would be **C4DFDD**, and the grayscale version is **CCCCCC**.

A 20% lighter version of the original color is **FFDFF**, and **A88E90** is the 20% darker color. If you saturate the color by 10%, you get **DFAEB1**, and if you desaturate by 10%, it is **DFDADB**.

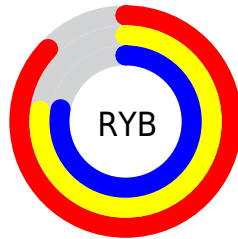
Distribution



Red (87%)

Green (77%)

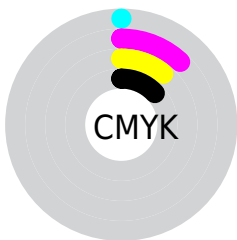
Blue (78%)



Red (87%)

Yellow (77%)

Blue (78%)

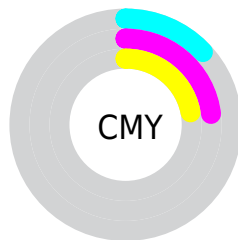


Cyan (0%)

Magenta (12%)

Yellow (11%)

Black (13%)



Cyan (13%)

Magenta (23%)

Yellow (22%)

Brightness & Saturation Gradients

These gradients show how the Hex color DFC4C6 changes by changing the brightness by 10 percent. The first figure shows a shift by +10% for each color and the second figure -10%.

Similar to the brightness gradients but the following saturation gradients show a change of the Hex color DFC4C6 by changing the saturation by 10% instead.

 DFC4C6

 DFC4C6

FFFFFF

 C3A9AB

FFFDFF

 A88E90

 8D7577

 735C5E

 5B4446

 432E30

 2C191B

 1A0000

 000000

 DFC4C6

 DFC4C6

 DFAEB1

 DFDADB

 DF979D

 DFF1EF

 DF8188

 DFFFFFF

 DF6B73

 DF555F

 DF3E4A

 DF2835

 DF1221

 DF0011

Harmonies

Analogous

The Analogous color harmony consists of three colors that are next to each other on the color wheel.



DBC4D0



DFC4C6



DEC5BD

Triad

The Triadic color harmony groups three colors that are evenly spaced from another and form a triangle on the color wheel.



DFC4C6



C2CEBD



BBCDDC

Complementary

The Complementary color scheme is a pair of colors which are on the opposite of each other on the color wheel.



DFC4C6



C4DFDD

Split Complementary

Split-complementary colors differ from the complementary color scheme. The scheme consists of three colors, the original color and two neighbors of the complement color.



B4CFD7



DFC4C6



B9D0C5

Square

The Square scheme is like the rectangle color scheme, but the four colors are evenly spaced on the color wheel.



DFC4C6



CDCBB8



B3D0CF



C6CADD

Rectangle

The Rectangle color scheme consists of four colors that form a rectangle on the color wheel.



DFC4C6



DAC7B9



B3D0CF



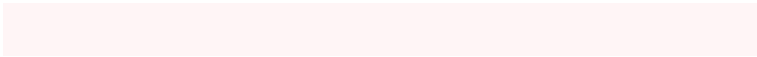
B8CEDB

Sweetspot

The Sweet Spot groups the original color and five complimentary colors.



DFC4C6



FFF5F6



DDC4DF



80797A



000000



808080

Same Dimension

The Same Dimension uses a secret algorithm to generate beautiful new colors.



DFC4C6



FFD9DC



DFCFC4



706566



B0000D



300004

Inverse Universe

The Inverse Universe completely reimagines the original color for something new.



DFC4C6



FFD9DC



C4D4DF



706566



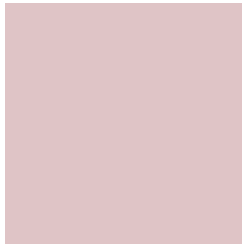
B0000D



300004

Previews

White Background



This preview shows how the Hex color DFC4C6 looks on a white background.

Color Contrast Check

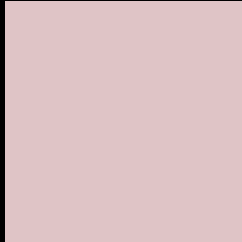
Large Text (above 18pt) WCAG AA × Fail

Any Text WCAG AA × Fail

Large Text (above 18pt) WCAG AAA × Fail

Any Text WCAG AAA × Fail

Black Background



This preview shows how the Hex color DFC4C6 looks on a black background.

Color Contrast Check

Large Text (above 18pt) WCAG AA ✓ Pass

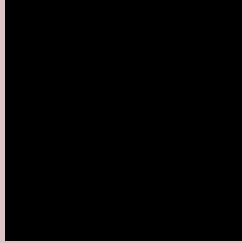
Any Text WCAG AA ✓ Pass

Large Text (above 18pt) WCAG AAA ✓ Pass

Any Text WCAG AAA ✓ Pass

If you want to check with other color combinations, try the [Color Contrast Checker](#).

Hex DFC4C6 Background



This preview shows how black text looks on a background with the Hex color DFC4C6.

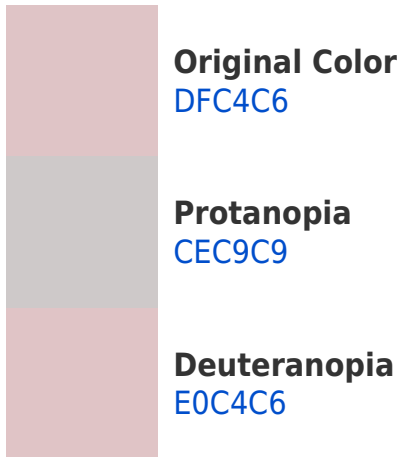


This preview shows how white text looks on a background with the Hex color DFC4C6.

Color Blindness Simulation

Color vision deficiency is a very complex topic, and I could not describe the different causes any better than Wikipedia does, so if you want to learn more, you should check out their [article about color blindness](#).

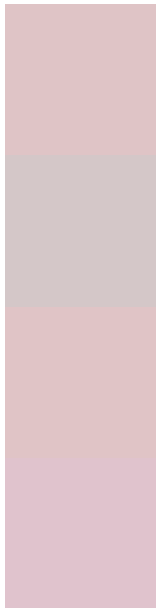
Dichromacy





Tritanopia
E1C2D1

Trichromacy



Original Color
DFC4C6

Protanomaly
D4C7C8

Deuteranomaly
E0C4C6

Tritanomaly
E0C3CD

Monochromacy



Original Color
DFC4C6

Achromatopsia
CCCCCC

Achromatomaly
D3C9CA

CSS Examples

Text

The CSS property to change the color of the text to Hex DFC4C6 is called "color". The color property can be set on classes, ids or directly on the HTML element.

This example shows how text in the color #DFC4C6 looks like.

```
.text, #text, p{  
    color:#DFC4C6  
}
```

If you want to add a text shadow in that color use the text-shadow property, you can generate a text shadow directly with our [CSS Text Shadow Generator](#).

Here you see how black text with a 4 pixel #DFC4C6 colored shadow looks like.

```
.shadow{ text-shadow: 4px 4px 2px #DFC4C6
}
```

Border

The CSS property to change the border of an element to Hex DFC4C6 is called "border". The border property can be set on classes, ids or directly on the HTML element.

This example shows the color as border, it can be applied via the CSS property "border" or "border-color".

```
.border, #border, table{ border:4px solid
#DFC4C6 }
```

If only the border color should be changed use the property `border-color`.

```
.border{ border-color:#DFC4C6 }
```

If you want to add a box shadow in that color use:

Here you see how a box with a 4 pixel #DFC4C6 colored shadow looks like.

```
.boxshadow{ -moz-box-shadow:4px 4px 4px  
4px #DFC4C6; -webkit-box-shadow:4px 4px  
4px 4px #DFC4C6; box-shadow:4px 4px 4px  
4px #DFC4C6 }
```

Background

The CSS property to change the background color of an element to Hex DFC4C6 is called "background". The background property can be set on classes, ids or directly on the HTML element.

```
.background, #background, body{  
background:#DFC4C6 }
```

If only the background color should be changed can be used:

```
.background{ background-color:#DFC4C6 }
```

This example shows the color as background, it is applied via the CSS property "background".

To optimize and compress your CSS code, you can use our [online CSS compressor and optimizer](#) based on csstidy. If you want to create a linear or radial gradient as background or border, check our [CSS Gradient Generator](#).

Hey! You found this booklet interesting? Support Converting Colors with the new Membership Option!

The pro membership hides all ads, plus gives you double the colors in the color bucket, and more awesome pro features!

[Learn more, Memberships starting at \\$2.50/m!](#)

**Follow me
on Twitter!**

@ConvertingColor