

Converting Colors

Hex(DFC5C1)

Have a look what the booklet for
Hex(DFC5C1) contains.

Hex(DFC5C1)	3
<i>Conversions</i>	4
<i>Details</i>	6
<i>Harmonies</i>	11
<i>Previews</i>	23
<i>Color Blindness Simulation</i>	26
<i>CSS Examples</i>	29

Color

Hex(DFC5C1)

Conversions

Conversions Part 1

Format	Color
Hex	DFC5C1
RGB	223, 197, 193
RGB Percent	87%, 77%, 76%
CMY	0.1255, 0.2275, 0.2431
CMYK	0.00, 0.12, 0.13, 0.13
HSL	8°, 32%, 82%
HSV	8°, 13%, 87%
XYZ	60.0233, 59.4707, 58.7675
YIQ	204.3180, 16.7800, 4.2680

Conversions

Conversions Part 2

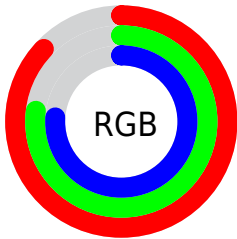
Format	Color
R _Y B	223, 198, 193
Decimal	14665153
CIE Lab	81.55, 8.50, 5.35
CIE LCh	82, 10.045, 32.189
Yxy	59.4707, 0.3367, 0.3336
Android (android.graphics.Color)	4292855233 (0xFFDFC5C1)
YUV	204.3180, -5.5798, 16.3841
Hunter-Lab	77.1173, 3.9781, 8.7999

Details

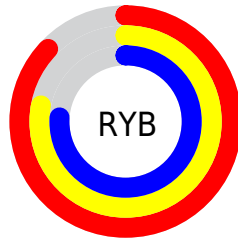
The Hex color **DFC5C1** is a light color, and the websafe version is hex **CCCCCC**. A complement of this color would be **C1DBDF**, and the grayscale version is **CCCCCC**.

A 20% lighter version of the original color is **FFFEF9**, and **A88F8C** is the 20% darker color. If you saturate the color by 10%, you get **DFB2AB**, and if you desaturate by 10%, it is **DFD8D7**.

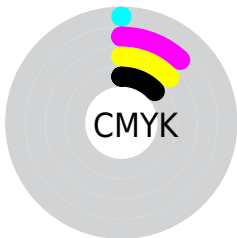
Distribution



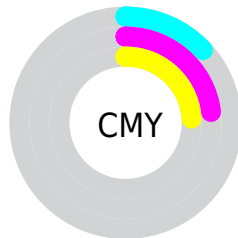
- Red (87%)
- Green (77%)
- Blue (76%)



- Red (87%)
- Yellow (78%)
- Blue (76%)



- Cyan (0%)
- Magenta (12%)
- Yellow (13%)
- Black (13%)



- Cyan (13%)
- Magenta (23%)
- Yellow (24%)

Brightness & Saturation Gradients

These gradients show how the Hex color DFC5C1 changes by changing the brightness by 10 percent. The first figure shows a shift by +10% for each color and the second figure -10%.

Similar to the brightness gradients but the following saturation gradients show a change of the Hex color DFC5C1 by changing the saturation by 10% instead.

 DFC5C1

FFFFFF

 FFFEF9

 DFC5C1

 C3AAA6

 A88F8C

 8D7672

 735D5A

 5A4542

 432F2C

 2C1A18

 180000

 000000

 DFC5C1

 DFC5C1

 DFB2AB

 DFD8D7

 DF9E94

 DFECEE

 DF8B7E

 DFFFFFF

 DF7868

 DF6452

 DF513B

 DF3E25

 DF2A0F

 DF1E00

Harmonies

Analogous

The Analogous color harmony consists of three colors that are next to each other on the color wheel.



DEC4CA



DFC5C1



DBC7BA

Triad

The Triadic color harmony groups three colors that are evenly spaced from another and form a triangle on the color wheel.



DFC5C1



BDCFC2



C2CBDD

Complementary

The Complementary color scheme is a pair of colors which are on the opposite of each other on the color wheel.



DFC5C1



C1DBDF

Split Complementary

Split-complementary colors differ from the complementary color scheme. The scheme consists of three colors, the original color and two neighbors of the complement color.



B8CEDB



DFC5C1



B5D0CB

Square

The Square scheme is like the rectangle color scheme, but the four colors are evenly spaced on the color wheel.



DFC5C1



C7CDBB



B4D0D4



CEC8DB

Rectangle

The Rectangle color scheme consists of four colors that form a rectangle on the color wheel.



DFC5C1



D5C9B8



B4D0D4



BECCDD

Sweetspot

The Sweet Spot groups the original color and five complimentary colors.



DFC5C1



FFF6F5



DFC1DB



807A79



000000



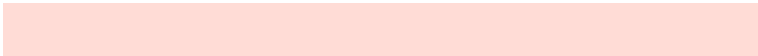
808080

Same Dimension

The Same Dimension uses a secret algorithm to generate beautiful new colors.



DFC5C1



FFDCD6



DFD4C1



706665



B01700



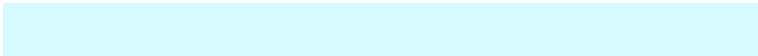
300600

Inverse Universe

The Inverse Universe completely reimagines the original color for something new.



C1DBDF



D6FAFF



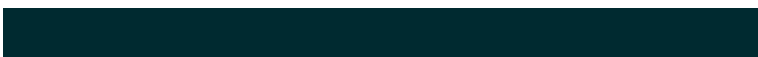
C1CCDF



656F70



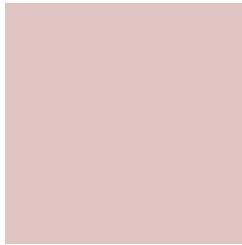
0098B0



002A30

Previews

White Background



This preview shows how the Hex color DFC5C1 looks on a white background.

Color Contrast Check

Large Text (above 18pt) WCAG AA × Fail

Any Text WCAG AA × Fail

Large Text (above 18pt) WCAG AAA × Fail

Any Text WCAG AAA × Fail

Black Background



This preview shows how the Hex color DFC5C1 looks on a black background.

Color Contrast Check

Large Text (above 18pt) WCAG AA ✓ Pass

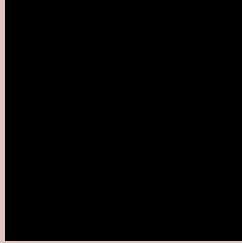
Any Text WCAG AA ✓ Pass

Large Text (above 18pt) WCAG AAA ✓ Pass

Any Text WCAG AAA ✓ Pass

If you want to check with other color combinations, try the [Color Contrast Checker](#).

Hex DFC5C1 Background



This preview shows how black text looks on a background with the Hex color DFC5C1.

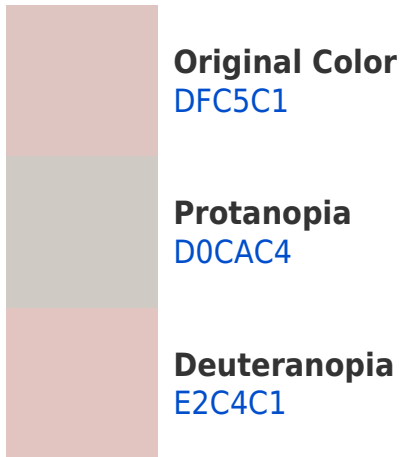


This preview shows how white text looks on a background with the Hex color DFC5C1.

Color Blindness Simulation

Color vision deficiency is a very complex topic, and I could not describe the different causes any better than Wikipedia does, so if you want to learn more, you should check out their [article about color blindness](#).

Dichromacy





Tritanopia
E1C2D2

Trichromacy



Original Color
DFC5C1

Protanomaly
D5C8C3

Deuteranomaly
E1C4C1

Tritanomaly
E0C3CC

Monochromacy



Original Color
DFC5C1

Achromatopsia
CCCCCC

Achromatomaly
D3C9C8

CSS Examples

Text

The CSS property to change the color of the text to Hex DFC5C1 is called "color". The color property can be set on classes, ids or directly on the HTML element.

This example shows how text in the color #DFC5C1 looks like.

```
.text, #text, p{  
    color:#DFC5C1  
}
```

If you want to add a text shadow in that color use the text-shadow property, you can generate a text shadow directly with our [CSS Text Shadow Generator](#).

Here you see how black text with a 4 pixel #DFC5C1 colored shadow looks like.

```
.shadow{ text-shadow: 4px 4px 2px #DFC5C1
}
```

Border

The CSS property to change the border of an element to Hex DFC5C1 is called "border". The border property can be set on classes, ids or directly on the HTML element.

This example shows the color as border, it can be applied via the CSS property "border" or "border-color".

```
.border, #border, table{ border:4px solid
#DFC5C1 }
```

If only the border color should be changed use the property `border-color`.

```
.border{ border-color:#DFC5C1 }
```

If you want to add a box shadow in that color use:

Here you see how a box with a 4 pixel #DFC5C1 colored shadow looks like.

```
.boxshadow{ -moz-box-shadow:4px 4px 4px  
4px #DFC5C1; -webkit-box-shadow:4px 4px  
4px 4px #DFC5C1; box-shadow:4px 4px 4px  
4px #DFC5C1 }
```

Background

The CSS property to change the background color of an element to Hex DFC5C1 is called "background". The background property can be set on classes, ids or directly on the HTML element.

```
.background, #background, body{  
background:#DFC5C1 }
```

If only the background color should be changed can be used:

```
.background{ background-color:#DFC5C1 }
```

This example shows the color as background, it is applied via the CSS property "background".

To optimize and compress your CSS code, you can use our [online CSS compressor and optimizer](#) based on csstidy. If you want to create a linear or radial gradient as background or border, check our [CSS Gradient Generator](#).

Hey! You found this booklet interesting? Support Converting Colors with the new Membership Option!

The pro membership hides all ads, plus gives you double the colors in the color bucket, and more awesome pro features!

[Learn more, Memberships starting at \\$2.50/m!](#)

**Follow me
on Twitter!**

@ConvertingColor