

Converting Colors

Hex(DFC5C5)

Have a look what the booklet for
Hex(DFC5C5) contains.

Hex(DFC5C5)	3
<i>Conversions</i>	4
<i>Details</i>	6
<i>Harmonies</i>	11
<i>Previews</i>	23
<i>Color Blindness Simulation</i>	26
<i>CSS Examples</i>	29

Color

Hex(DFC5C5)

Conversions

Conversions Part 1

Format	Color
Hex	DFC5C5
RGB	223, 197, 197
RGB Percent	87%, 77%, 77%
CMY	0.1255, 0.2275, 0.2275
CMYK	0.00, 0.12, 0.12, 0.13
HSL	0°, 29%, 82%
HSV	0°, 12%, 87%
XYZ	60.4757, 59.6517, 61.1498
YIQ	204.7740, 15.4960, 5.5120

Conversions

Conversions Part 2

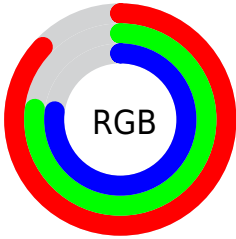
Format	Color
R _Y B	223, 197, 197
Decimal	14665157
CIE Lab	81.65, 9.15, 3.35
CIE LCh	82, 9.744, 20.110
Yxy	59.6517, 0.3336, 0.3291
Android (android.graphics.Color)	4292855237 (0xFFDFC5C5)
YUV	204.7740, -3.8326, 15.9842
Hunter-Lab	77.2345, 4.6076, 7.1218

Details

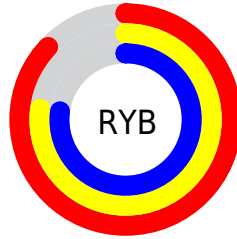
The Hex color **DFC5C5** is a light color, and the websafe version is hex **CCCCCC**. A complement of this color would be **C5DFDF**, and the grayscale version is **CDCDCD**.

A 20% lighter version of the original color is **FFFEFE**, and **A88F8F** is the 20% darker color. If you saturate the color by 10%, you get **DFAFAF**, and if you desaturate by 10%, it is **DFDBDB**.

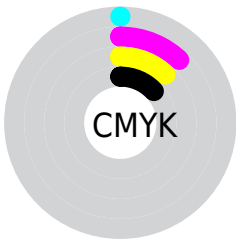
Distribution



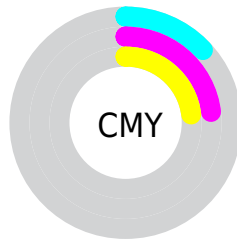
- Red (87%)
- Green (77%)
- Blue (77%)



- Red (87%)
- Yellow (77%)
- Blue (77%)



- Cyan (0%)
- Magenta (12%)
- Yellow (12%)
- Black (13%)



- Cyan (13%)
- Magenta (23%)
- Yellow (23%)

Brightness & Saturation Gradients

These gradients show how the Hex color DFC5C5 changes by changing the brightness by 10 percent. The first figure shows a shift by +10% for each color and the second figure -10%.

Similar to the brightness gradients but the following saturation gradients show a change of the Hex color DFC5C5 by changing the saturation by 10% instead.

 DFC5C5

 DFC5C5

FFFFFF

 C3AAAA

FFFEFE

 A88F8F

 8D7676

 735D5D

 5B4546

 432F2F

 2C1A1B

 1A0000

 000000

 DFC5C5

 DFC5C5

 DFAFAF

 DFDBDB

 DF9898

 DFF2F2

 DF8282

 DFFFFFF

 DF6C6C

 DF5656

 DF3F3F

 DF2929

 DF1313

 DF0000

Harmonies

Analogous

The Analogous color harmony consists of three colors that are next to each other on the color wheel.



DCC5CE



DFC5C5



DDC7BD

Triad

The Triadic color harmony groups three colors that are evenly spaced from another and form a triangle on the color wheel.



DFC5C5



C1CFBF



BECDDD

Complementary

The Complementary color scheme is a pair of colors which are on the opposite of each other on the color wheel.



DFC5C5



C5DFDF

Split Complementary

Split-complementary colors differ from the complementary color scheme. The scheme consists of three colors, the original color and two neighbors of the complement color.



B7CFD9



DFC5C5



B9D0C7

Square

The Square scheme is like the rectangle color scheme, but the four colors are evenly spaced on the color wheel.



DFC5C5



CCCCBA



B5D0D1



C9CADC

Rectangle

The Rectangle color scheme consists of four colors that form a rectangle on the color wheel.



DFC5C5



D9C8BA



B5D0D1



BBCEDC

Sweetspot

The Sweet Spot groups the original color and five complimentary colors.



DFC5C5



FFF7F7



DFC5DF



807A7A



000000



808080

Same Dimension

The Same Dimension uses a secret algorithm to generate beautiful new colors.



DFC5C5



FFDBDB



DFD2C5



706565



B00000



300000

Inverse Universe

The Inverse Universe completely reimagines the original color for something new.



C5DFDF



DBFFFF



C5D2DF



657070



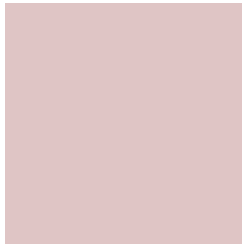
00B0B0



003030

Previews

White Background



This preview shows how the Hex color DFC5C5 looks on a white background.

Color Contrast Check

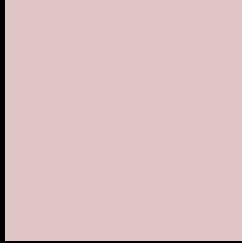
Large Text (above 18pt) WCAG AA × Fail

Any Text WCAG AA × Fail

Large Text (above 18pt) WCAG AAA × Fail

Any Text WCAG AAA × Fail

Black Background



This preview shows how the Hex color DFC5C5 looks on a black background.

Color Contrast Check

Large Text (above 18pt) WCAG AA ✓ Pass

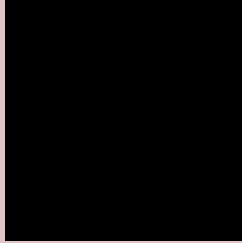
Any Text WCAG AA ✓ Pass

Large Text (above 18pt) WCAG AAA ✓ Pass

Any Text WCAG AAA ✓ Pass

If you want to check with other color combinations, try the [Color Contrast Checker](#).

Hex DFC5C5 Background



This preview shows how black text looks on a background with the Hex color DFC5C5.



This preview shows how white text looks on a background with the Hex color DFC5C5.

Color Blindness Simulation

Color vision deficiency is a very complex topic, and I could not describe the different causes any better than Wikipedia does, so if you want to learn more, you should check out their [article about color blindness](#).

Dichromacy



Original Color
DFC5C5

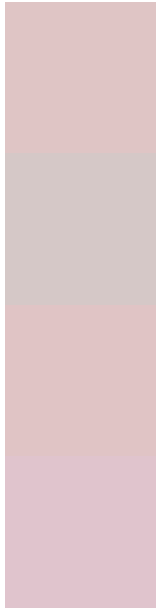
Protanopia
CFCAC8

Deuteranopia
E1C4C5



Tritanopia
E1C3D2

Trichromacy



Original Color
DFC5C5

Protanomaly
D5C8C7

Deuteranomaly
E0C4C5

Tritanomaly
E0C4CD

Monochromacy



Original Color
DFC5C5

Achromatopsia
CDCDCD

Achromatomaly
D4CACA

CSS Examples

Text

The CSS property to change the color of the text to Hex DFC5C5 is called "color". The color property can be set on classes, ids or directly on the HTML element.

This example shows how text in the color #DFC5C5 looks like.

```
.text, #text, p{  
    color:#DFC5C5  
}
```

If you want to add a text shadow in that color use the text-shadow property, you can generate a text shadow directly with our [CSS Text Shadow Generator](#).

Here you see how black text with a 4 pixel #DFC5C5 colored shadow looks like.

```
.shadow{ text-shadow: 4px 4px 2px #DFC5C5
}
```

Border

The CSS property to change the border of an element to Hex DFC5C5 is called "border". The border property can be set on classes, ids or directly on the HTML element.

This example shows the color as border, it can be applied via the CSS property "border" or "border-color".

```
.border, #border, table{ border:4px solid
#DFC5C5 }
```

If only the border color should be changed use the property `border-color`.

```
.border{ border-color:#DFC5C5 }
```

If you want to add a box shadow in that color use:

Here you see how a box with a 4 pixel #DFC5C5 colored shadow looks like.

```
.boxshadow{ -moz-box-shadow:4px 4px 4px  
4px #DFC5C5; -webkit-box-shadow:4px 4px  
4px 4px #DFC5C5; box-shadow:4px 4px 4px  
4px #DFC5C5 }
```

Background

The CSS property to change the background color of an element to Hex DFC5C5 is called "background". The background property can be set on classes, ids or directly on the HTML element.

```
.background, #background, body{  
background:#DFC5C5 }
```

If only the background color should be changed can be used:

```
.background{ background-color:#DFC5C5 }
```

This example shows the color as background, it is applied via the CSS property "background".

To optimize and compress your CSS code, you can use our [online CSS compressor and optimizer](#) based on csstidy. If you want to create a linear or radial gradient as background or border, check our [CSS Gradient Generator](#).

Hey! You found this booklet interesting? Support Converting Colors with the new Membership Option!

The pro membership hides all ads, plus gives you double the colors in the color bucket, and more awesome pro features!

[Learn more, Memberships starting at \\$2.50/m!](#)

**Follow me
on Twitter!**

@ConvertingColor