

# Converting Colors

Hex(DFC6C6)

Have a look what the booklet for  
Hex(DFC6C6) contains.

<b>Hex(DFC6C6)</b> .....	3
<i><b>Conversions</b></i> .....	4
<i><b>Details</b></i> .....	6
<i><b>Harmonies</b></i> .....	11
<i><b>Previews</b></i> .....	23
<i><b>Color Blindness Simulation</b></i> .....	26
<i><b>CSS Examples</b></i> .....	29

# **Color**

**Hex(DFC6C6)**

# Conversions

## Conversions Part 1

Format	Color
Hex	DFC6C6
RGB	223, 198, 198
RGB Percent	87%, 78%, 78%
CMY	0.1255, 0.2235, 0.2235
CMYK	0.00, 0.11, 0.11, 0.13
HSL	0°, 28%, 83%
HSV	0°, 11%, 87%
XYZ	60.8186, 60.1534, 61.8314
YIQ	205.4750, 14.9000, 5.3000

# Conversions

## Conversions Part 2

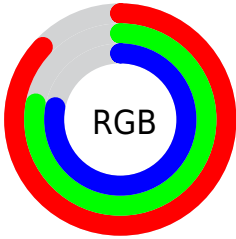
Format	Color
R <sub>Y</sub> B	223, 198, 198
Decimal	14665414
CIE Lab	81.92, 8.78, 3.21
CIE LCh	82, 9.353, 20.074
Yxy	60.1534, 0.3327, 0.3291
Android (android.graphics.Color)	4292855494 (0xFFDFC6C6)
YUV	205.4750, -3.6852, 15.3694
Hunter-Lab	77.5586, 4.2455, 7.0238

# Details

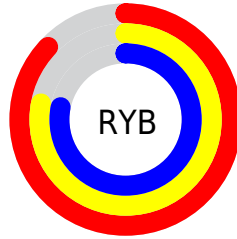
The Hex color **DFC6C6** is a light color, and the websafe version is hex **CCCCCC**. A complement of this color would be **C6DFDF**, and the grayscale version is **CDCDCD**.

A 20% lighter version of the original color is **FFFFFF**, and **A89090** is the 20% darker color. If you saturate the color by 10%, you get **DFB0B0**, and if you desaturate by 10%, it is **DFDCDC**.

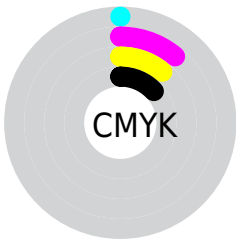
# Distribution



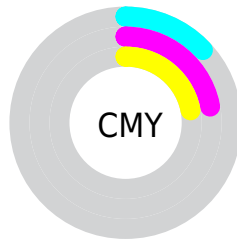
- Red (87%)
- Green (78%)
- Blue (78%)



- Red (87%)
- Yellow (78%)
- Blue (78%)



- Cyan (0%)
- Magenta (11%)
- Yellow (11%)
- Black (13%)



- Cyan (13%)
- Magenta (22%)
- Yellow (22%)

# Brightness & Saturation Gradients

These gradients show how the Hex color DFC6C6 changes by changing the brightness by 10 percent. The first figure shows a shift by +10% for each color and the second figure -10%.

Similar to the brightness gradients but the following saturation gradients show a change of the Hex color DFC6C6 by changing the saturation by 10% instead.



 DFC6C6

FFFFFF

 DFC6C6

 C3ABAB

 A89090

 8D7777

 735E5E

 5B4646

 433030

 2C1B1B

 1A0000

 000000

 DFC6C6

 DFC6C6

 DFB0B0

 DFDCDC

 DF9999

 DFF3F3

 DF8383

 DFFFFFF

 DF6D6D

 DF5757

 DF4040

 DF2A2A

 DF1414

 DF0000

# Harmonies

## Analogous

The Analogous color harmony consists of three colors that are next to each other on the color wheel.



DCC6CF



DFC6C6



DDC7BF

# Triad

The Triadic color harmony groups three colors that are evenly spaced from another and form a triangle on the color wheel.



DFC6C6



C2CFC0



BFCDDD

# Complementary

The Complementary color scheme is a pair of colors which are on the opposite of each other on the color wheel.



DFC6C6



C6DFDF

# Split Complementary

Split-complementary colors differ from the complementary color scheme. The scheme consists of three colors, the original color and two neighbors of the complement color.



B8D0D9



DFC6C6



BAD1C8

# Square

The Square scheme is like the rectangle color scheme, but the four colors are evenly spaced on the color wheel.



DFC6C6



CDCDBB



B6D1D1



CACADC

# Rectangle

The Rectangle color scheme consists of four colors that form a rectangle on the color wheel.



DFC6C6



D9C9BB



B6D1D1



BDCEDC



# Sweetspot

The Sweet Spot groups the original color and five complimentary colors.



DFC6C6



FFF7F7



DFC6DF



807A7A



000000



808080

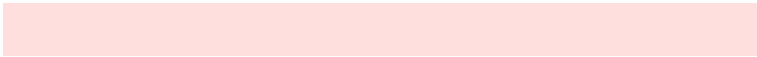


# Same Dimension

The Same Dimension uses a secret algorithm to generate beautiful new colors.



DFC6C6



FFDEDE



DFD3C6



706565



B00000



300000

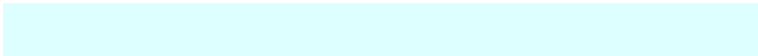


# Inverse Universe

The Inverse Universe completely reimagines the original color for something new.



C6DFDF



DEFFFF



C6D3DF



657070



00B0B0

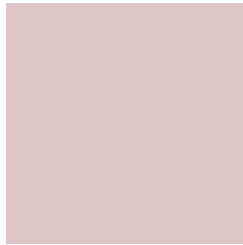


003030



# Previews

## White Background



This preview shows how the Hex color DFC6C6 looks on a white background.

## Color Contrast Check

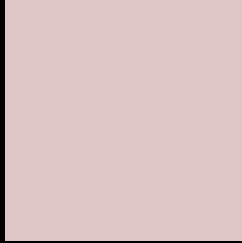
Large Text (above 18pt) WCAG AA × Fail

Any Text WCAG AA × Fail

Large Text (above 18pt) WCAG AAA × Fail

Any Text WCAG AAA × Fail

# Black Background



This preview shows how the Hex color DFC6C6 looks on a black background.

## Color Contrast Check

Large Text (above 18pt) WCAG AA ✓ Pass

Any Text WCAG AA ✓ Pass

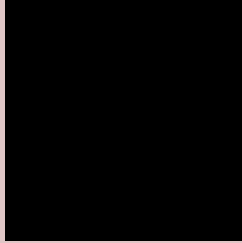
Large Text (above 18pt) WCAG AAA ✓ Pass

Any Text WCAG AAA ✓ Pass

If you want to check with other color combinations, try the [Color Contrast Checker](#).



## Hex DFC6C6 Background



This preview shows how black text looks on a background with the Hex color DFC6C6.

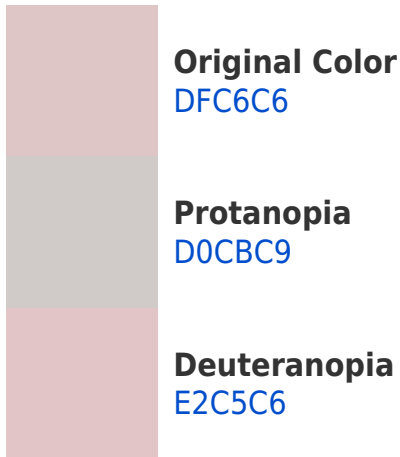


This preview shows how white text looks on a background with the Hex color DFC6C6.

# Color Blindness Simulation

Color vision deficiency is a very complex topic, and I could not describe the different causes any better than Wikipedia does, so if you want to learn more, you should check out their [article about color blindness](#).

## Dichromacy





**Tritanopia**  
E1C4D3

# Trichromacy



**Original Color**  
DFC6C6

**Protanomaly**  
D5C9C8

**Deuteranomaly**  
E1C5C6

**Tritanomaly**  
E0C5CE

# Monochromacy



**Original Color**  
DFC6C6

**Achromatopsia**  
CDCDCD

**Achromatomaly**  
D4CACA

# CSS Examples

## Text

The CSS property to change the color of the text to Hex DFC6C6 is called "color". The color property can be set on classes, ids or directly on the HTML element.

This example shows how text in the color #DFC6C6 looks like.

```
.text, #text, p{  
    color:#DFC6C6  
}
```

If you want to add a text shadow in that color use the text-shadow property, you can generate a text shadow directly with our [CSS Text Shadow Generator](#).

Here you see how black text with a 4 pixel #DFC6C6 colored shadow looks like.

```
.shadow{ text-shadow: 4px 4px 2px #DFC6C6
}
```

## Border

The CSS property to change the border of an element to Hex DFC6C6 is called "border". The border property can be set on classes, ids or directly on the HTML element.

This example shows the color as border, it can be applied via the CSS property "border" or "border-color".

```
.border, #border, table{ border:4px solid
#DFC6C6 }
```

If only the border color should be changed use the property `border-color`.

```
.border{ border-color:#DFC6C6 }
```

If you want to add a box shadow in that color use:

Here you see how a box with a 4 pixel #DFC6C6 colored shadow looks like.

```
.boxshadow{ -moz-box-shadow:4px 4px 4px  
4px #DFC6C6; -webkit-box-shadow:4px 4px  
4px 4px #DFC6C6; box-shadow:4px 4px 4px  
4px #DFC6C6 }
```

# Background

The CSS property to change the background color of an element to Hex DFC6C6 is called "background". The background property can be set on classes, ids or directly on the HTML element.

```
.background, #background, body{  
background:#DFC6C6 }
```

If only the background color should be changed can be used:

```
.background{ background-color:#DFC6C6 }
```

This example shows the color as background, it is applied via the CSS property "background".

To optimize and compress your CSS code, you can use our [online CSS compressor and optimizer](#) based on csstidy. If you want to create a linear or radial gradient as background or border, check our [CSS Gradient Generator](#).



Hey! You found this booklet interesting? Support Converting Colors with the new Membership Option!

The pro membership hides all ads, plus gives you double the colors in the color bucket, and more awesome pro features!

**[Learn more, Memberships starting at \\$2.50/m!](#)**

**Follow me  
on Twitter!**

@ConvertingColor