

Converting Colors

Hex(DFC7A9)

Have a look what the booklet for
Hex(DFC7A9) contains.

Hex(DFC7A9)	3
<i>Conversions</i>	4
<i>Details</i>	6
<i>Harmonies</i>	11
<i>Previews</i>	23
<i>Color Blindness Simulation</i>	26
<i>CSS Examples</i>	29

Color

Hex(DFC7A9)

Conversions

Conversions Part 1

Format	Color
Hex	DFC7A9
RGB	223, 199, 169
RGB Percent	87%, 78%, 66%
CMY	0.1255, 0.2196, 0.3373
CMYK	0.00, 0.11, 0.24, 0.13
HSL	33°, 46%, 77%
HSV	33°, 24%, 87%
XYZ	58.0163, 59.3994, 45.9436
YIQ	202.7560, 23.9340, -4.2420

Conversions

Conversions Part 2

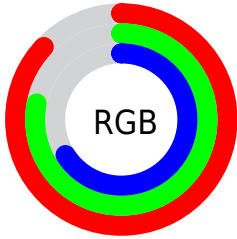
Format	Color
R _Y B	212, 223, 169
Decimal	14665641
CIE Lab	81.51, 3.83, 18.11
CIE LCh	82, 18.514, 78.050
Yxy	59.3994, 0.3551, 0.3636
Android (android.graphics.Color)	4292855721 (0xFFDFC7A9)
YUV	202.7560, -16.6417, 17.7540
Hunter-Lab	77.0710, -0.5059, 18.6058

Details

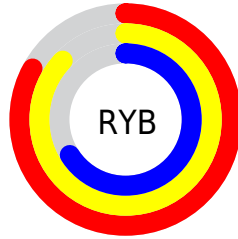
The Hex color **DFC7A9** is a light color, and the websafe version is hex **CCCC99**. A complement of this color would be **A9C1DF**, and the grayscale version is **CBCBCB**.

A 20% lighter version of the original color is **FFFFE0**, and **A79175** is the 20% darker color. If you saturate the color by 10%, you get **DFBD93**, and if you desaturate by 10%, it is **DFD1BF**.

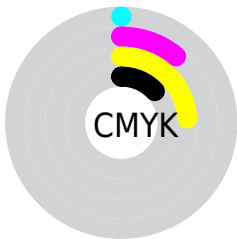
Distribution



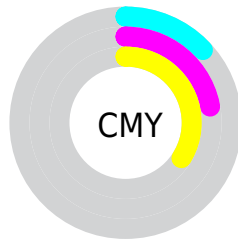
- Red (87%)
- Green (78%)
- Blue (66%)



- Red (83%)
- Yellow (87%)
- Blue (66%)



- Cyan (0%)
- Magenta (11%)
- Yellow (24%)
- Black (13%)



- Cyan (13%)
- Magenta (22%)
- Yellow (34%)

Brightness & Saturation Gradients

These gradients show how the Hex color DFC7A9 changes by changing the brightness by 10 percent. The first figure shows a shift by +10% for each color and the second figure -10%.

Similar to the brightness gradients but the following saturation gradients show a change of the Hex color DFC7A9 by changing the saturation by 10% instead.

 DFC7A9

 DFC7A9

FFFFFF

 C3AC8E

 FFFFE0

 A79175

FFFFFFD

 8C785C

 725F44

 59472E

 413119

 2B1C00

 110200

 000000

 DFC7A9

 DFC7A9

 DFBD93

 DFD1BF

 DFB37C

 DFDBD6

 DFA966

 DFE5EC

 DF9F50

 DFEFFF

 DF953A

 DFF9FF

 DF8C23

 DFFFFFF

 DF820D

 DF7C00

Harmonies

Analogous

The Analogous color harmony consists of three colors that are next to each other on the color wheel.



EBC2B1



DFC7A9



CDCDAA

Triad

The Triadic color harmony groups three colors that are evenly spaced from another and form a triangle on the color wheel.



DFC7A9



9DD5D5



DAC3E2

Complementary

The Complementary color scheme is a pair of colors which are on the opposite of each other on the color wheel.



DFC7A9



A9C1DF

Split Complementary

Split-complementary colors differ from the complementary color scheme. The scheme consists of three colors, the original color and two neighbors of the complement color.



C5C8EB



DFC7A9



A0D3E4

Square

The Square scheme is like the rectangle color scheme, but the four colors are evenly spaced on the color wheel.



DFC7A9



A8D4C3



AFCEEC



E9BFD2

Rectangle

The Rectangle color scheme consists of four colors that form a rectangle on the color wheel.



DFC7A9



C0D0AF



AFCEEC



D4C5E6

Sweetspot

The Sweet Spot groups the original color and five complimentary colors.



DFC7A9



FFF7ED



DFA9C1



807B75



000000



808080

Same Dimension

The Same Dimension uses a secret algorithm to generate beautiful new colors.



DFC7A9



FFDEB5



DCDFA9



706B65



B06200



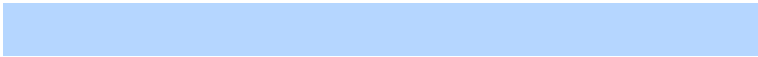
301B00

Inverse Universe

The Inverse Universe completely reimagines the original color for something new.



A9C1DF



B5D6FF



ACA9DF



656A70



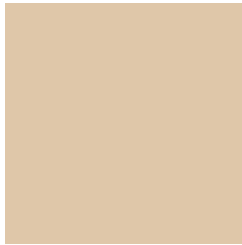
004EB0



001630

Previews

White Background



This preview shows how the Hex color DFC7A9 looks on a white background.

Color Contrast Check

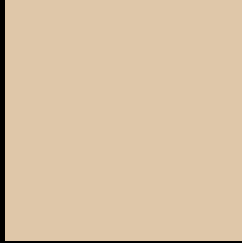
Large Text (above 18pt) WCAG AA × Fail

Any Text WCAG AA × Fail

Large Text (above 18pt) WCAG AAA × Fail

Any Text WCAG AAA × Fail

Black Background



This preview shows how the Hex color DFC7A9 looks on a black background.

Color Contrast Check

Large Text (above 18pt) WCAG AA ✓ Pass

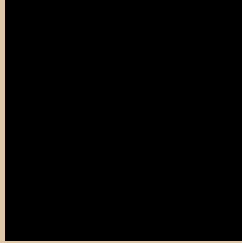
Any Text WCAG AA ✓ Pass

Large Text (above 18pt) WCAG AAA ✓ Pass

Any Text WCAG AAA ✓ Pass

If you want to check with other color combinations, try the [Color Contrast Checker](#).

Hex DFC7A9 Background



This preview shows how black text looks on a background with the Hex color DFC7A9.

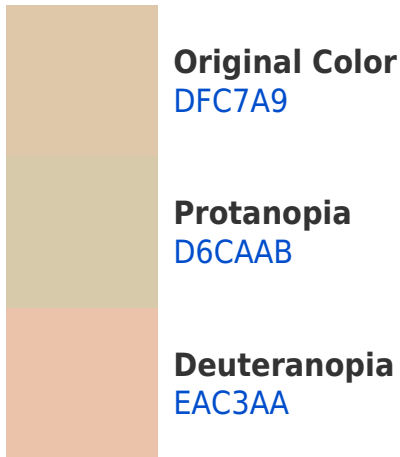


This preview shows how white text looks on a background with the Hex color DFC7A9.

Color Blindness Simulation

Color vision deficiency is a very complex topic, and I could not describe the different causes any better than Wikipedia does, so if you want to learn more, you should check out their [article about color blindness](#).

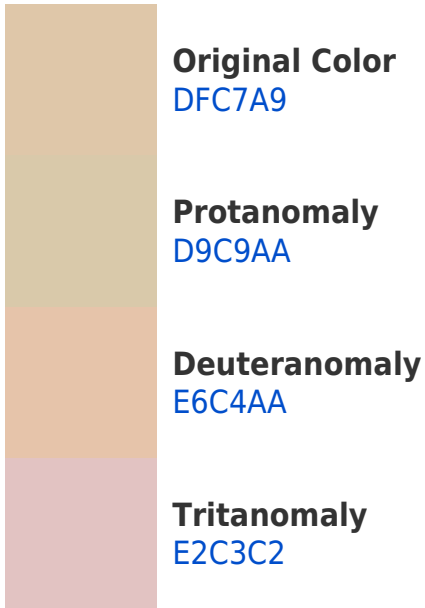
Dichromacy





Tritanopia
E4C1D1

Trichromacy



Monochromacy



CSS Examples

Text

The CSS property to change the color of the text to Hex DFC7A9 is called "color". The color property can be set on classes, ids or directly on the HTML element.

This example shows how text in the color #DFC7A9 looks like.

```
.text, #text, p{  
    color:#DFC7A9  
}
```

If you want to add a text shadow in that color use the text-shadow property, you can generate a text shadow directly with our [CSS Text Shadow Generator](#).

Here you see how black text with a 4 pixel #DFC7A9 colored shadow looks like.

```
.shadow{ text-shadow: 4px 4px 2px #DFC7A9
}
```

Border

The CSS property to change the border of an element to Hex DFC7A9 is called "border". The border property can be set on classes, ids or directly on the HTML element.

This example shows the color as border, it can be applied via the CSS property "border" or "border-color".

```
.border, #border, table{ border:4px solid
#DFC7A9 }
```

If only the border color should be changed use the property `border-color`.

```
.border{ border-color:#DFC7A9 }
```

If you want to add a box shadow in that color use:

Here you see how a box with a 4 pixel #DFC7A9 colored shadow looks like.

```
.boxshadow{ -moz-box-shadow:4px 4px 4px  
4px #DFC7A9; -webkit-box-shadow:4px 4px  
4px 4px #DFC7A9; box-shadow:4px 4px 4px  
4px #DFC7A9 }
```

Background

The CSS property to change the background color of an element to Hex DFC7A9 is called "background". The background property can be set on classes, ids or directly on the HTML element.

```
.background, #background, body{  
background:#DFC7A9 }
```

If only the background color should be changed can be used:

```
.background{ background-color:#DFC7A9 }
```

This example shows the color as background, it is applied via the CSS property "background".

To optimize and compress your CSS code, you can use our [online CSS compressor and optimizer](#) based on csstidy. If you want to create a linear or radial gradient as background or border, check our [CSS Gradient Generator](#).

Hey! You found this booklet interesting? Support Converting Colors with the new Membership Option!

The pro membership hides all ads, plus gives you double the colors in the color bucket, and more awesome pro features!

[Learn more, Memberships starting at \\$2.50/m!](#)

**Follow me
on Twitter!**

@ConvertingColor