

Converting Colors

Hex(DFC7BF)

Have a look what the booklet for
Hex(DFC7BF) contains.

Hex(DFC7BF)	3
<i>Conversions</i>	4
<i>Details</i>	6
<i>Harmonies</i>	11
<i>Previews</i>	23
<i>Color Blindness Simulation</i>	26
<i>CSS Examples</i>	29

Color

Hex(DFC7BF)

Conversions

Conversions Part 1

Format	Color
Hex	DFC7BF
RGB	223, 199, 191
RGB Percent	87%, 78%, 75%
CMY	0.1255, 0.2196, 0.2510
CMYK	0.00, 0.11, 0.14, 0.13
HSL	15°, 33%, 81%
HSV	15°, 14%, 87%
XYZ	60.2588, 60.2964, 57.7526
YIQ	205.2640, 16.8720, 2.6000

Conversions

Conversions Part 2

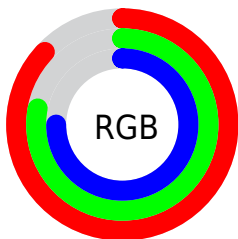
Format	Color
R _Y B	223, 202, 191
Decimal	14665663
CIE Lab	82.00, 7.12, 7.07
CIE LCh	82, 10.036, 44.776
Yxy	60.2964, 0.3379, 0.3382
Android (android.graphics.Color)	4292855743 (0xFFDFC7BF)
YUV	205.2640, -7.0322, 15.5545
Hunter-Lab	77.6508, 2.6314, 10.2587

Details

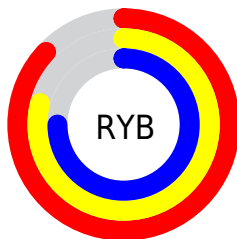
The Hex color **DFC7BF** is a light color, and the websafe version is hex **CCCCCC**. A complement of this color would be **BFD7DF**, and the grayscale version is **CDCDCD**.

A 20% lighter version of the original color is **FFFFF7**, and **A8918A** is the 20% darker color. If you saturate the color by 10%, you get **DFB6A9**, and if you desaturate by 10%, it is **DFD8D5**.

Distribution



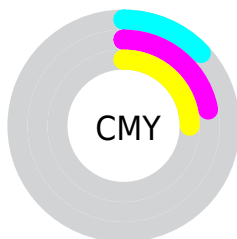
- Red (87%)
- Green (78%)
- Blue (75%)



- Red (87%)
- Yellow (79%)
- Blue (75%)



- Cyan (0%)
- Magenta (11%)
- Yellow (14%)
- Black (13%)



- Cyan (13%)
- Magenta (22%)
- Yellow (25%)

Brightness & Saturation Gradients

These gradients show how the Hex color DFC7BF changes by changing the brightness by 10 percent. The first figure shows a shift by +10% for each color and the second figure -10%.

Similar to the brightness gradients but the following saturation gradients show a change of the Hex color DFC7BF by changing the saturation by 10% instead.

 DFC7BF

FFFFFFF

 FFFFFF7

 DFC7BF

 C3ACA4

 A8918A

 8D7770

 735F58

 5A4741

 43312B

 2C1C16

 180100

 000000

 DFC7BF

 DFC7BF

 DFB6A9

 DFD8D5

 DFA692

 DFE8EC

 DF957C

 DFF9FF

 DF8466

 DFFFFFF

 DF7350

 DF6339

 DF5223

 DF410D

 DF3800

Harmonies

Analogous

The Analogous color harmony consists of three colors that are next to each other on the color wheel.



E0C6C7



DFC7BF



D9CABA

Triad

The Triadic color harmony groups three colors that are evenly spaced from another and form a triangle on the color wheel.



DFC7BF



BAD1C7



C8CBDE

Complementary

The Complementary color scheme is a pair of colors which are on the opposite of each other on the color wheel.



DFC7BF



BFD7DF

Split Complementary

Split-complementary colors differ from the complementary color scheme. The scheme consists of three colors, the original color and two neighbors of the complement color.



BDCEDF



DFC7BF



B5D2D0

Square

The Square scheme is like the rectangle color scheme, but the four colors are evenly spaced on the color wheel.



DFC7BF



C4CFBE



B6D1D9



D3C8D9

Rectangle

The Rectangle color scheme consists of four colors that form a rectangle on the color wheel.



DFC7BF



D2CCB9



B6D1D9



C4CCDE

Sweetspot

The Sweet Spot groups the original color and five complimentary colors.



DFC7BF



FFF7F5



DFBFD7



807B79



000000



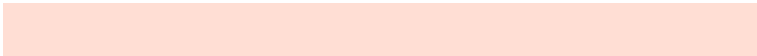
808080

Same Dimension

The Same Dimension uses a secret algorithm to generate beautiful new colors.



DFC7BF



FFDED4



DFD7BF



706865



B02C00



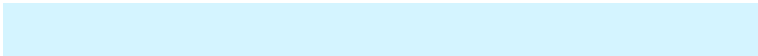
300C00

Inverse Universe

The Inverse Universe completely reimagines the original color for something new.



BFD7DF



D4F4FF



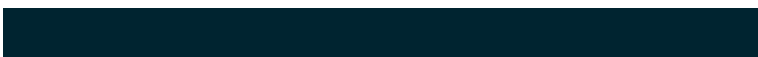
BFC7DF



656D70



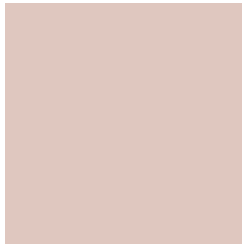
0084B0



002430

Previews

White Background



This preview shows how the Hex color DFC7BF looks on a white background.

Color Contrast Check

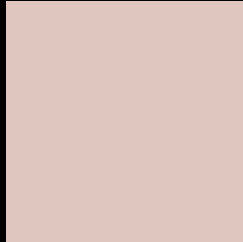
Large Text (above 18pt) WCAG AA × Fail

Any Text WCAG AA × Fail

Large Text (above 18pt) WCAG AAA × Fail

Any Text WCAG AAA × Fail

Black Background



This preview shows how the Hex color DFC7BF looks on a black background.

Color Contrast Check

Large Text (above 18pt) WCAG AA ✓ Pass

Any Text WCAG AA ✓ Pass

Large Text (above 18pt) WCAG AAA ✓ Pass

Any Text WCAG AAA ✓ Pass

If you want to check with other color combinations, try the [Color Contrast Checker](#).

Hex DFC7BF Background



This preview shows how black text looks on a background with the Hex color DFC7BF.

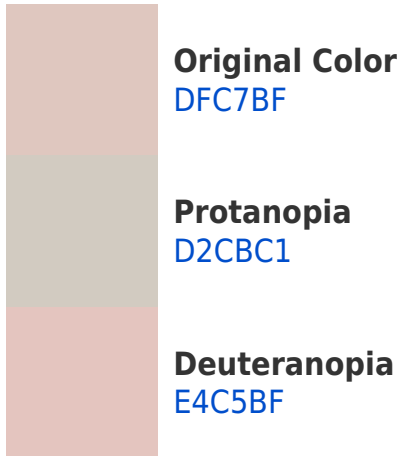


This preview shows how white text looks on a background with the Hex color DFC7BF.

Color Blindness Simulation

Color vision deficiency is a very complex topic, and I could not describe the different causes any better than Wikipedia does, so if you want to learn more, you should check out their [article about color blindness](#).

Dichromacy





Tritanopia
E2C4D3

Trichromacy



Original Color
DFC7BF

Protanomaly
D7CAC0

Deuteranomaly
E2C6BF

Tritanomaly
E1C5CC

Monochromacy



Original Color
DFC7BF

Achromatopsia
CDCDCD

Achromatomaly
D4CBC8

CSS Examples

Text

The CSS property to change the color of the text to Hex DFC7BF is called "color". The color property can be set on classes, ids or directly on the HTML element.

This example shows how text in the color #DFC7BF looks like.

```
.text, #text, p{  
  color:#DFC7BF  
}
```

If you want to add a text shadow in that color use the text-shadow property, you can generate a text shadow directly with our [CSS Text Shadow Generator](#).

Here you see how black text with a 4 pixel #DFC7BF colored shadow looks like.

```
.shadow{ text-shadow: 4px 4px 2px #DFC7BF }  
}
```

Border

The CSS property to change the border of an element to Hex DFC7BF is called "border". The border property can be set on classes, ids or directly on the HTML element.

This example shows the color as border, it can be applied via the CSS property "border" or "border-color".

```
.border, #border, table{ border:4px solid #DFC7BF }  
}
```

If only the border color should be changed use the property `border-color`.

```
.border{ border-color:#DFC7BF }
```

If you want to add a box shadow in that color use:

Here you see how a box with a 4 pixel #DFC7BF colored shadow looks like.

```
.boxshadow{ -moz-box-shadow:4px 4px 4px  
4px #DFC7BF; -webkit-box-shadow:4px 4px  
4px 4px #DFC7BF; box-shadow:4px 4px 4px  
4px #DFC7BF }
```

Background

The CSS property to change the background color of an element to Hex DFC7BF is called "background". The background property can be set on classes, ids or directly on the HTML element.

```
.background, #background, body{  
background:#DFC7BF }
```

If only the background color should be changed can be used:

```
.background{ background-color:#DFC7BF }
```

This example shows the color as background, it is applied via the CSS property "background".

To optimize and compress your CSS code, you can use our [online CSS compressor and optimizer](#) based on csstidy. If you want to create a linear or radial gradient as background or border, check our [CSS Gradient Generator](#).

Hey! You found this booklet interesting? Support Converting Colors with the new Membership Option!

The pro membership hides all ads, plus gives you double the colors in the color bucket, and more awesome pro features!

[Learn more, Memberships starting at \\$2.50/m!](#)

**Follow me
on Twitter!**

@ConvertingColor