

Converting Colors

Hex(DFC8B5)

Have a look what the booklet for
Hex(DFC8B5) contains.

Hex(DFC8B5)	3
<i>Conversions</i>	4
<i>Details</i>	6
<i>Harmonies</i>	11
<i>Previews</i>	23
<i>Color Blindness Simulation</i>	26
<i>CSS Examples</i>	29

Color

Hex(DFC8B5)

Conversions

Conversions Part 1

Format	Color
Hex	DFC8B5
RGB	223, 200, 181
RGB Percent	87%, 78%, 71%
CMY	0.1255, 0.2157, 0.2902
CMYK	0.00, 0.10, 0.19, 0.13
HSL	27°, 40%, 79%
HSV	27°, 19%, 87%
XYZ	59.4262, 60.3327, 52.2293
YIQ	204.7110, 19.8070, -1.0330

Conversions

Conversions Part 2

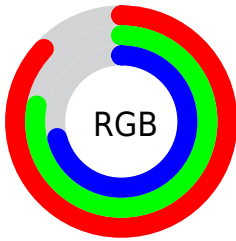
Format	Color
R _Y B	223, 216, 181
Decimal	14665909
CIE Lab	82.02, 5.05, 12.44
CIE LCh	82, 13.424, 67.894
Yxy	60.3327, 0.3455, 0.3508
Android (android.graphics.Color)	4292855989 (0xFFDFC8B5)
YUV	204.7110, -11.6895, 16.0395
Hunter-Lab	77.6741, 0.6353, 14.5043

Details

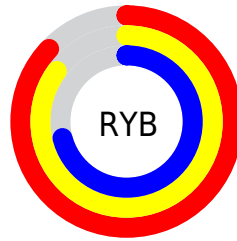
The Hex color **DFC8B5** is a light color, and the websafe version is hex **CCCCCC**. A complement of this color would be **B5CCDF**, and the grayscale version is **CDCDCD**.

A 20% lighter version of the original color is **FFFFED**, and **A79280** is the 20% darker color. If you saturate the color by 10%, you get **DFBC9F**, and if you desaturate by 10%, it is **DFD4CB**.

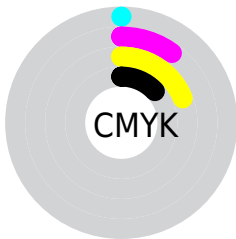
Distribution



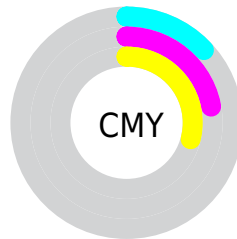
- Red (87%)
- Green (78%)
- Blue (71%)



- Red (87%)
- Yellow (85%)
- Blue (71%)



- Cyan (0%)
- Magenta (10%)
- Yellow (19%)
- Black (13%)



- Cyan (13%)
- Magenta (22%)
- Yellow (29%)

Brightness & Saturation Gradients

These gradients show how the Hex color DFC8B5 changes by changing the brightness by 10 percent. The first figure shows a shift by +10% for each color and the second figure -10%.

Similar to the brightness gradients but the following saturation gradients show a change of the Hex color DFC8B5 by changing the saturation by 10% instead.

 DFC8B5

 DFC8B5

FFFFFF

 C3AD9A

 FFFFED

 A79280

 8D7867

 73604F

 5A4838

 423223

 2B1D0D

 150300

 000000

 DFC8B5

 DFC8B5

 DFBC9F

 DFD4CB

 DFB088

 DFE0E2

 DFA372

 DFEDF8

 DF975C

 DFF9FF

 DF8B46

 DFFFFFF

 DF7F2F

 DF7319

 DF6603

 DF6500

Harmonies

Analogous

The Analogous color harmony consists of three colors that are next to each other on the color wheel.



E6C5BD



DFC8B5



D3CCB3

Triad

The Triadic color harmony groups three colors that are evenly spaced from another and form a triangle on the color wheel.



DFC8B5



AED4CF



D3C8E0

Complementary

The Complementary color scheme is a pair of colors which are on the opposite of each other on the color wheel.



DFC8B5



B5CCDF

Split Complementary

Split-complementary colors differ from the complementary color scheme. The scheme consists of three colors, the original color and two neighbors of the complement color.



C3CCE5



DFC8B5



ADD3DB

Square

The Square scheme is like the rectangle color scheme, but the four colors are evenly spaced on the color wheel.



DFC8B5



B7D3C2



B5D0E3



E0C5D6

Rectangle

The Rectangle color scheme consists of four colors that form a rectangle on the color wheel.



DFC8B5



C9CFB6



B5D0E3



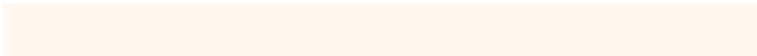
CDC9E2

Sweetspot

The Sweet Spot groups the original color and five complimentary colors.



DFC8B5



FFF7F0



DFB5CC



807B77



000000



808080

Same Dimension

The Same Dimension uses a secret algorithm to generate beautiful new colors.



DFC8B5



FFDFC4



DFDDB5



706A65



B05000



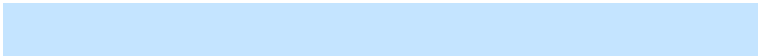
301600

Inverse Universe

The Inverse Universe completely reimagines the original color for something new.



B5CCDF



C4E4FF



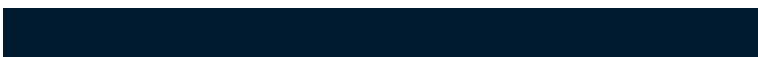
B5B7DF



656B70



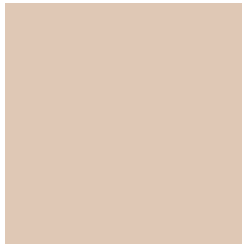
0060B0



001B30

Previews

White Background



This preview shows how the Hex color DFC8B5 looks on a white background.

Color Contrast Check

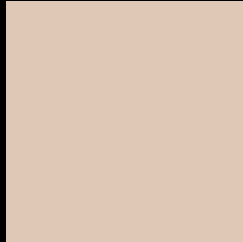
Large Text (above 18pt) WCAG AA × Fail

Any Text WCAG AA × Fail

Large Text (above 18pt) WCAG AAA × Fail

Any Text WCAG AAA × Fail

Black Background



This preview shows how the Hex color DFC8B5 looks on a black background.

Color Contrast Check

Large Text (above 18pt) WCAG AA ✓ Pass

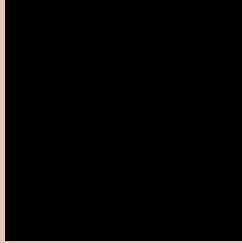
Any Text WCAG AA ✓ Pass

Large Text (above 18pt) WCAG AAA ✓ Pass

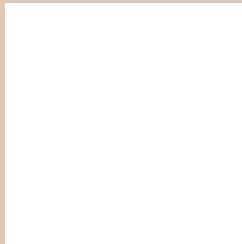
Any Text WCAG AAA ✓ Pass

If you want to check with other color combinations, try the [Color Contrast Checker](#).

Hex DFC8B5 Background



This preview shows how black text looks on a background with the Hex color DFC8B5.

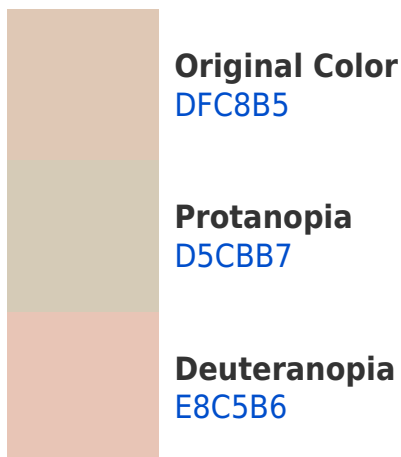


This preview shows how white text looks on a background with the Hex color DFC8B5.

Color Blindness Simulation

Color vision deficiency is a very complex topic, and I could not describe the different causes any better than Wikipedia does, so if you want to learn more, you should check out their [article about color blindness](#).

Dichromacy





Tritanopia
E3C4D3

Trichromacy



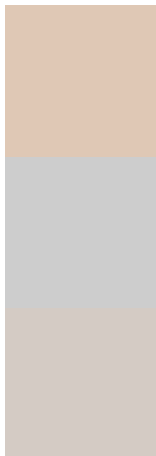
Original Color
DFC8B5

Protanomaly
D9CAB6

Deuteranomaly
E5C6B6

Tritanomaly
E2C5C8

Monochromacy



Original Color
DFC8B5

Achromatopsia
CDCDCD

Achromatomaly
D4CBC4

CSS Examples

Text

The CSS property to change the color of the text to Hex DFC8B5 is called "color". The color property can be set on classes, ids or directly on the HTML element.

This example shows how text in the color #DFC8B5 looks like.

```
.text, #text, p{  
    color:#DFC8B5  
}
```

If you want to add a text shadow in that color use the text-shadow property, you can generate a text shadow directly with our [CSS Text Shadow Generator](#).

Here you see how black text with a 4 pixel #DFC8B5 colored shadow looks like.

```
.shadow{ text-shadow: 4px 4px 2px #DFC8B5  
}
```

Border

The CSS property to change the border of an element to Hex DFC8B5 is called "border". The border property can be set on classes, ids or directly on the HTML element.

This example shows the color as border, it can be applied via the CSS property "border" or "border-color".

```
.border, #border, table{ border:4px solid  
#DFC8B5 }
```

If only the border color should be changed use the property `border-color`.

```
.border{ border-color:#DFC8B5 }
```

If you want to add a box shadow in that color use:

Here you see how a box with a 4 pixel #DFC8B5 colored shadow looks like.

```
.boxshadow{ -moz-box-shadow:4px 4px 4px  
4px #DFC8B5; -webkit-box-shadow:4px 4px  
4px 4px #DFC8B5; box-shadow:4px 4px 4px  
4px #DFC8B5 }
```

Background

The CSS property to change the background color of an element to Hex DFC8B5 is called "background". The background property can be set on classes, ids or directly on the HTML element.

```
.background, #background, body{  
background:#DFC8B5 }
```

If only the background color should be changed can be used:

```
.background{ background-color:#DFC8B5 }
```

This example shows the color as background, it is applied via the CSS property "background".

To optimize and compress your CSS code, you can use our [online CSS compressor and optimizer](#) based on csstidy. If you want to create a linear or radial gradient as background or border, check our [CSS Gradient Generator](#).

Hey! You found this booklet interesting? Support Converting Colors with the new Membership Option!

The pro membership hides all ads, plus gives you double the colors in the color bucket, and more awesome pro features!

[Learn more, Memberships starting at \\$2.50/m!](#)

**Follow me
on Twitter!**

@ConvertingColor