

Converting Colors

Hex(DFC8C8)

Have a look what the booklet for
Hex(DFC8C8) contains.

Hex(DFC8C8)	3
<i>Conversions</i>	4
<i>Details</i>	6
<i>Harmonies</i>	11
<i>Previews</i>	23
<i>Color Blindness Simulation</i>	26
<i>CSS Examples</i>	29

Color

Hex(DFC8C8)

Conversions

Conversions Part 1

Format	Color
Hex	DFC8C8
RGB	223, 200, 200
RGB Percent	87%, 78%, 78%
CMY	0.1255, 0.2157, 0.2157
CMYK	0.00, 0.10, 0.10, 0.13
HSL	0°, 26%, 83%
HSV	0°, 10%, 87%
XYZ	61.5110, 61.1667, 63.2079
YIQ	206.8770, 13.7080, 4.8760

Conversions

Conversions Part 2

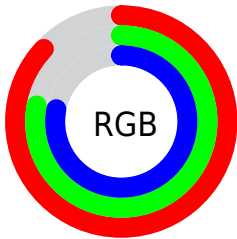
Format	Color
R _Y B	223, 200, 200
Decimal	14665928
CIE Lab	82.47, 8.06, 2.93
CIE LCh	82, 8.574, 20.002
Yxy	61.1667, 0.3309, 0.3291
Android (android.graphics.Color)	4292856008 (0xFFDFC8C8)
YUV	206.8770, -3.3904, 14.1399
Hunter-Lab	78.2091, 3.5233, 6.8287

Details

The Hex color **DFC8C8** is a light color, and the websafe version is hex **CCCCCC**. A complement of this color would be **C8DFDF**, and the grayscale version is **CFCFCF**.

A 20% lighter version of the original color is **FFFFFF**, and **A89292** is the 20% darker color. If you saturate the color by 10%, you get **DFB2B2**, and if you desaturate by 10%, it is **DFDEDE**.

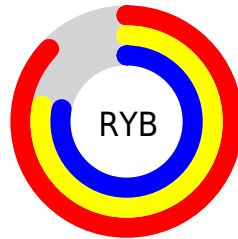
Distribution



Red (87%)

Green (78%)

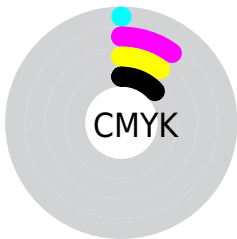
Blue (78%)



Red (87%)

Yellow (78%)

Blue (78%)

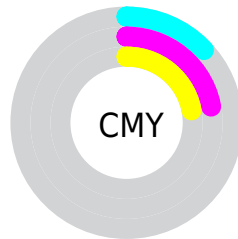


Cyan (0%)

Magenta (10%)

Yellow (10%)

Black (13%)



Cyan (13%)

Magenta (22%)

Yellow (22%)

Brightness & Saturation Gradients

These gradients show how the Hex color DFC8C8 changes by changing the brightness by 10 percent. The first figure shows a shift by +10% for each color and the second figure -10%.

Similar to the brightness gradients but the following saturation gradients show a change of the Hex color DFC8C8 by changing the saturation by 10% instead.

 DFC8C8

FFFFFF

 DFC8C8

 C3ADAD

 A89292

 8D7878

 736060

 5B4848

 433132

 2C1C1D

 1A0202

 000000

 DFC8C8

 DFC8C8

 DFB2B2

 DFDEDE

 DF9B9B

 DFF5F5

 DF8585

 DFFFFFF

 DF6F6F

 DF5858

 DF4242

 DF2C2C

 DF1616

 DF0000

Harmonies

Analogous

The Analogous color harmony consists of three colors that are next to each other on the color wheel.



DCC8D0



DFC8C8



DDC9C1

Triad

The Triadic color harmony groups three colors that are evenly spaced from another and form a triangle on the color wheel.



DFC8C8



C5D1C3



C2CFDD

Complementary

The Complementary color scheme is a pair of colors which are on the opposite of each other on the color wheel.



DFC8C8



C8DFDF

Split Complementary

Split-complementary colors differ from the complementary color scheme. The scheme consists of three colors, the original color and two neighbors of the complement color.



BBD1D9



DFC8C8



BDD2CA

Square

The Square scheme is like the rectangle color scheme, but the four colors are evenly spaced on the color wheel.



DFC8C8



CECEBE



BAD2D2



CCCCDC

Rectangle

The Rectangle color scheme consists of four colors that form a rectangle on the color wheel.



DFC8C8



D9CBBE



BAD2D2



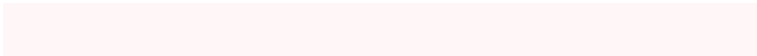
BFD0DC

Sweetspot

The Sweet Spot groups the original color and five complimentary colors.



DFC8C8



FFF7F7



DFC8DF



807A7A



000000



808080

Same Dimension

The Same Dimension uses a secret algorithm to generate beautiful new colors.



DFC8C8



FFE0E0



DFD3C8



706565



B00000



300000

Inverse Universe

The Inverse Universe completely reimagines the original color for something new.



C8DFDF



E0FFFF



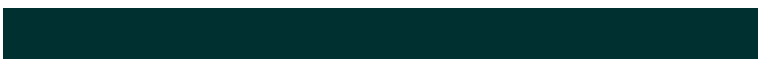
C8D3DF



657070



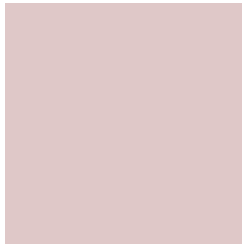
00B0B0



003030

Previews

White Background



This preview shows how the Hex color DFC8C8 looks on a white background.

Color Contrast Check

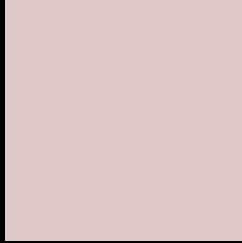
Large Text (above 18pt) WCAG AA × Fail

Any Text WCAG AA × Fail

Large Text (above 18pt) WCAG AAA × Fail

Any Text WCAG AAA × Fail

Black Background



This preview shows how the Hex color DFC8C8 looks on a black background.

Color Contrast Check

Large Text (above 18pt) WCAG AA ✓ Pass

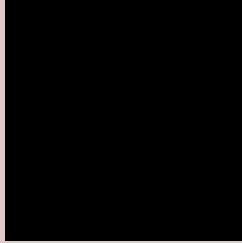
Any Text WCAG AA ✓ Pass

Large Text (above 18pt) WCAG AAA ✓ Pass

Any Text WCAG AAA ✓ Pass

If you want to check with other color combinations, try the [Color Contrast Checker](#).

Hex DFC8C8 Background



This preview shows how black text looks on a background with the Hex color DFC8C8.



This preview shows how white text looks on a background with the Hex color DFC8C8.

Color Blindness Simulation

Color vision deficiency is a very complex topic, and I could not describe the different causes any better than Wikipedia does, so if you want to learn more, you should check out their [article about color blindness](#).

Dichromacy



Original Color
DFC8C8

Protanopia
D2CCCA

Deuteranopia
E3C7C8



Tritanopia
E1C6D5

Trichromacy



Original Color
DFC8C8

Protanomaly
D7CBC9

Deuteranomaly
E2C7C8

Tritanomaly
E0C7D0

Monochromacy



Original Color
DFC8C8

Achromatopsia
CFCFCF

Achromatomaly
D5CCCC

CSS Examples

Text

The CSS property to change the color of the text to Hex DFC8C8 is called "color". The color property can be set on classes, ids or directly on the HTML element.

This example shows how text in the color #DFC8C8 looks like.

```
.text, #text, p{  
    color:#DFC8C8  
}
```

If you want to add a text shadow in that color use the text-shadow property, you can generate a text shadow directly with our [CSS Text Shadow Generator](#).

Here you see how black text with a 4 pixel #DFC8C8 colored shadow looks like.

```
.shadow{ text-shadow: 4px 4px 2px #DFC8C8 }  
}
```

Border

The CSS property to change the border of an element to Hex DFC8C8 is called "border". The border property can be set on classes, ids or directly on the HTML element.

This example shows the color as border, it can be applied via the CSS property "border" or "border-color".

```
.border, #border, table{ border:4px solid #DFC8C8 }  
}
```

If only the border color should be changed use the property `border-color`.

```
.border{ border-color:#DFC8C8 }
```

If you want to add a box shadow in that color use:

Here you see how a box with a 4 pixel #DFC8C8 colored shadow looks like.

```
.boxshadow{ -moz-box-shadow:4px 4px 4px  
4px #DFC8C8; -webkit-box-shadow:4px 4px  
4px 4px #DFC8C8; box-shadow:4px 4px 4px  
4px #DFC8C8 }
```

Background

The CSS property to change the background color of an element to Hex DFC8C8 is called "background". The background property can be set on classes, ids or directly on the HTML element.

```
.background, #background, body{  
background:#DFC8C8 }
```

If only the background color should be changed can be used:

```
.background{ background-color:#DFC8C8 }
```

This example shows the color as background, it is applied via the CSS property "background".

To optimize and compress your CSS code, you can use our [online CSS compressor and optimizer](#) based on csstidy. If you want to create a linear or radial gradient as background or border, check our [CSS Gradient Generator](#).

Hey! You found this booklet interesting? Support Converting Colors with the new Membership Option!

The pro membership hides all ads, plus gives you double the colors in the color bucket, and more awesome pro features!

[Learn more, Memberships starting at \\$2.50/m!](#)

**Follow me
on Twitter!**

@ConvertingColor