

Converting Colors

Hex(DFD0D5)

Have a look what the booklet for
Hex(DFD0D5) contains.

Hex(DFD0D5)	3
<i>Conversions</i>	4
<i>Details</i>	6
<i>Harmonies</i>	11
<i>Previews</i>	23
<i>Color Blindness Simulation</i>	26
<i>CSS Examples</i>	29

Color

Hex(DFD0D5)

Conversions

Conversions Part 1

Format	Color
Hex	DFD0D5
RGB	223, 208, 213
RGB Percent	87%, 82%, 84%
CMY	0.1255, 0.1843, 0.1647
CMYK	0.00, 0.07, 0.04, 0.13
HSL	340°, 19%, 85%
HSV	340°, 7%, 87%
XYZ	64.9975, 65.6038, 72.1879
YIQ	213.0550, 7.3350, 4.7350

Conversions

Conversions Part 2

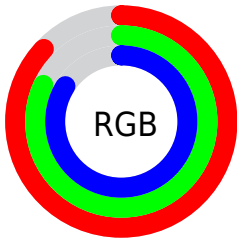
Format	Color
R_{YB}	223, 208, 213
Decimal	14667989
CIE Lab	84.79, 6.05, -0.61
CIE LCh	85, 6.085, 354.234
Yxy	65.6038, 0.3205, 0.3235
Android (android.graphics.Color)	4292858069 (0xFFDFD0D5)
YUV	213.0550, -0.0271, 8.7218
Hunter-Lab	80.9962, 1.4987, 3.8551

Details

The Hex color **DFD0D5** is a light color, and the websafe version is hex **CCCCCC**. A complement of this color would be **D0DFDA**, and the grayscale version is **D5D5D5**.

A 20% lighter version of the original color is **FFFFFF**, and **A89A9E** is the 20% darker color. If you saturate the color by 10%, you get **DFBAC6**, and if you desaturate by 10%, it is **DFE6E4**.

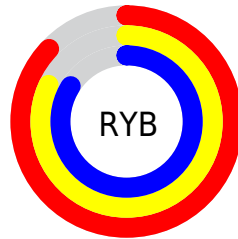
Distribution



Red (87%)

Green (82%)

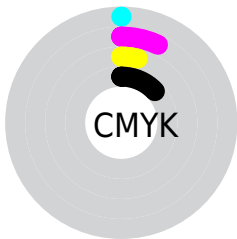
Blue (84%)



Red (87%)

Yellow (82%)

Blue (84%)

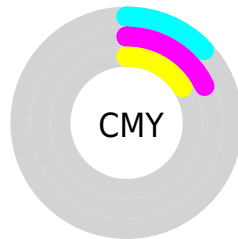


Cyan (0%)

Magenta (7%)

Yellow (4%)

Black (13%)



Cyan (13%)

Magenta (18%)

Yellow (16%)

Brightness & Saturation Gradients

These gradients show how the Hex color DFD0D5 changes by changing the brightness by 10 percent. The first figure shows a shift by +10% for each color and the second figure -10%.

Similar to the brightness gradients but the following saturation gradients show a change of the Hex color DFD0D5 by changing the saturation by 10% instead.

DFD0D5

FFFFFF

DFD0D5

C3B4B9

A89A9E

8D8084

74676B

5B4F53

44383C

2D2226

190D12

000000

 DFD0D5

 DFD0D5

 DFBAC6

 DFE6E4

 DFA3B7

 DFFDF3

 DF8DA8

 DFFFFF

 DF779A

 DF618B

 DF4A7C

 DF346D

 DF1E5E

 DF074F

Harmonies

Analogous

The Analogous color harmony consists of three colors that are next to each other on the color wheel.



DAD1DA



DFD0D5



E1D0CF

Triad

The Triadic color harmony groups three colors that are evenly spaced from another and form a triangle on the color wheel.



DFD0D5



D3D5C9



C8D6DD

Complementary

The Complementary color scheme is a pair of colors which are on the opposite of each other on the color wheel.



DFD0D5



D0DFDA

Split Complementary

Split-complementary colors differ from the complementary color scheme. The scheme consists of three colors, the original color and two neighbors of the complement color.



C6D7D8



DFD0D5



CDD6CD

Square

The Square scheme is like the rectangle color scheme, but the four colors are evenly spaced on the color wheel.



DFD0D5



DAD3C8



C8D7D2



CDD4DF

Rectangle

The Rectangle color scheme consists of four colors that form a rectangle on the color wheel.



DFD0D5



E0D1CC



C8D7D2



C7D7DB

Sweetspot

The Sweet Spot groups the original color and five complimentary colors.



DFD0D5



FFFAFC



DAD0DF



807D7E



000000



808080

Same Dimension

The Same Dimension uses a secret algorithm to generate beautiful new colors.



DFD0D5



FFEBF1



DFD2D0



706569



B0003B



300010

Inverse Universe

The Inverse Universe completely reimagines the original color for something new.



DFD0D5



FFEBF1



D0DCDF



706569



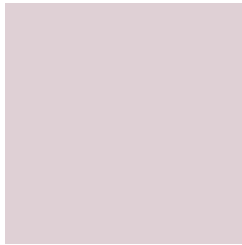
B0003B



300010

Previews

White Background



This preview shows how the Hex color DFD0D5 looks on a white background.

Color Contrast Check

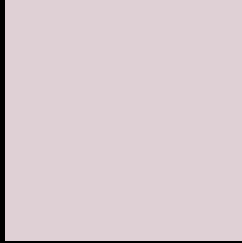
Large Text (above 18pt) WCAG AA × Fail

Any Text WCAG AA × Fail

Large Text (above 18pt) WCAG AAA × Fail

Any Text WCAG AAA × Fail

Black Background



This preview shows how the Hex color DFD0D5 looks on a black background.

Color Contrast Check

Large Text (above 18pt) WCAG AA ✓ Pass

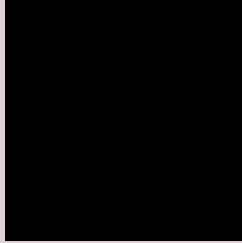
Any Text WCAG AA ✓ Pass

Large Text (above 18pt) WCAG AAA ✓ Pass

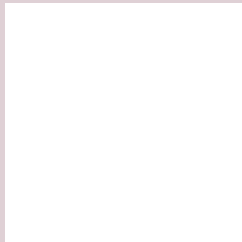
Any Text WCAG AAA ✓ Pass

If you want to check with other color combinations, try the [Color Contrast Checker](#).

Hex DFD0D5 Background



This preview shows how black text looks on a background with the Hex color DFD0D5.

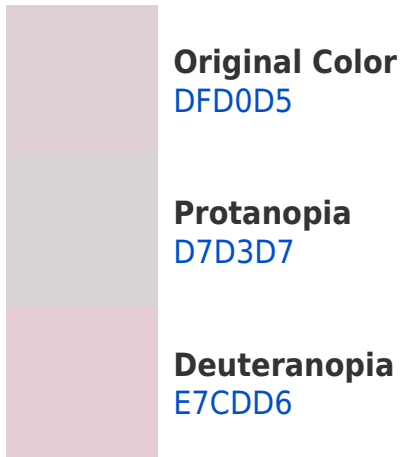


This preview shows how white text looks on a background with the Hex color DFD0D5.

Color Blindness Simulation

Color vision deficiency is a very complex topic, and I could not describe the different causes any better than Wikipedia does, so if you want to learn more, you should check out their [article about color blindness](#).

Dichromacy



Trichromacy



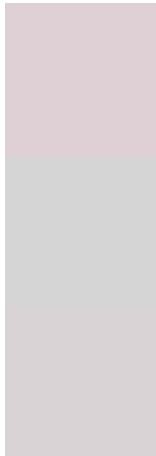
Original Color
DFD0D5

Protanomaly
DAD2D6

Deuteranomaly
E4CED6

Tritanomaly
E0CFDB

Monochromacy



Original Color
DFD0D5

Achromatopsia
D5D5D5

Achromatomaly
D9D3D5

CSS Examples

Text

The CSS property to change the color of the text to Hex DFD0D5 is called "color". The color property can be set on classes, ids or directly on the HTML element.

This example shows how text in the color #DFD0D5 looks like.

```
.text, #text, p{  
    color:#DFD0D5  
}
```

If you want to add a text shadow in that color use the text-shadow property, you can generate a text shadow directly with our [CSS Text Shadow Generator](#).

Here you see how black text with a 4 pixel #DFD0D5 colored shadow looks like.

```
.shadow{ text-shadow: 4px 4px 2px #DFD0D5
}
```

Border

The CSS property to change the border of an element to Hex DFD0D5 is called "border". The border property can be set on classes, ids or directly on the HTML element.

This example shows the color as border, it can be applied via the CSS property "border" or "border-color".

```
.border, #border, table{ border:4px solid
#DFD0D5 }
```

If only the border color should be changed use the property `border-color`.

```
.border{ border-color:#DFD0D5 }
```

If you want to add a box shadow in that color use:

Here you see how a box with a 4 pixel #DFD0D5 colored shadow looks like.

```
.boxshadow{ -moz-box-shadow:4px 4px 4px  
4px #DFD0D5; -webkit-box-shadow:4px 4px  
4px 4px #DFD0D5; box-shadow:4px 4px 4px  
4px #DFD0D5 }
```

Background

The CSS property to change the background color of an element to Hex DFD0D5 is called "background". The background property can be set on classes, ids or directly on the HTML element.

```
.background, #background, body{  
background:#DFD0D5 }
```

If only the background color should be changed can be used:

```
.background{ background-color:#DFD0D5 }
```

This example shows the color as background, it is applied via the CSS property "background".

To optimize and compress your CSS code, you can use our [online CSS compressor and optimizer](#) based on csstidy. If you want to create a linear or radial gradient as background or border, check our [CSS Gradient Generator](#).

Hey! You found this booklet interesting? Support Converting Colors with the new Membership Option!

The pro membership hides all ads, plus gives you double the colors in the color bucket, and more awesome pro features!

[Learn more, Memberships starting at \\$2.50/m!](#)

**Follow me
on Twitter!**

@ConvertingColor