

Converting Colors

Hex(E02E66)

Have a look what the booklet for
Hex(E02E66) contains.

Hex(E02E66)	3
<i>Conversions</i>	4
<i>Details</i>	6
<i>Harmonies</i>	11
<i>Previews</i>	23
<i>Color Blindness Simulation</i>	26
<i>CSS Examples</i>	29

Color

Hex(E02E66)

Conversions

Conversions Part 1

Format	Color
Hex	E02E66
RGB	224, 46, 102
RGB Percent	88%, 18%, 40%
CMY	0.1216, 0.8196, 0.6000
CMYK	0.00, 0.79, 0.54, 0.12
HSL	341°, 74%, 53%
HSV	341°, 79%, 88%
XYZ	34.1157, 18.7606, 14.3934
YIQ	105.6060, 88.1120, 55.1520

Conversions

Conversions Part 2

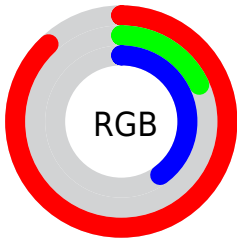
Format	Color
R_{YB}	224, 46, 102
Decimal	14691942
CIE _{Lab}	50.41, 69.11, 12.61
CIE _{LCh}	50, 70.247, 10.342
Yxy	18.7606, 0.5071, 0.2789
Android (android.graphics.Color)	4292882022 (0xFFE02E66)
YUV	105.6060, -1.7778, 103.8315
Hunter-Lab	43.3135, 64.7963, 10.6169

Details

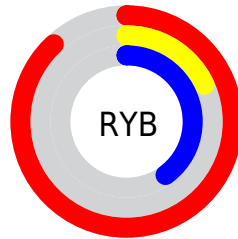
The Hex color **E02E66** is a dark color, and the websafe version is hex **CC3366**. The color can be described as dark washed rose. A complement of this color would be **2EE0A8**, and the grayscale version is **6A6A6A**.

A 20% lighter version of the original color is **FF6E99**, and **A20038** is the 20% darker color. If you saturate the color by 10%, you get **E01857**, and if you desaturate by 10%, it is **E04475**.

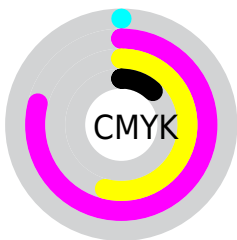
Distribution



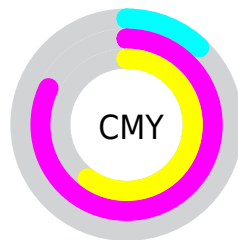
- Red (88%)
- Green (18%)
- Blue (40%)



- Red (88%)
- Yellow (18%)
- Blue (40%)



- Cyan (0%)
- Magenta (79%)
- Yellow (54%)
- Black (12%)



- Cyan (12%)
- Magenta (82%)
- Yellow (60%)

Brightness & Saturation Gradients

These gradients show how the Hex color E02E66 changes by changing the brightness by 10 percent. The first figure shows a shift by +10% for each color and the second figure -10%.

Similar to the brightness gradients but the following saturation gradients show a change of the Hex color E02E66 by changing the saturation by 10% instead.

 E02E66

 E02E66

FFFFFF

 C1004E

 FF6E99

 A20038

 FF8BB3

 830023

 FFA8CF

 65000D

 FFC6EB

 490004

 FFE3FF

 290001

 000000

 E02E66

 E02E66

 E01857

 E04475

 E00147

 E05B85

 E00046

 E07194

 E088A3

 E09EB3

 E0B4C2

 E0CBD1

 E0E1E1

 E0F8F0

Harmonies

Analogous

The Analogous color harmony consists of three colors that are next to each other on the color wheel.



CD3BA2



E02E66



D4482C

Triad

The Triadic color harmony groups three colors that are evenly spaced from another and form a triangle on the color wheel.



E02E66



388901



0089E9

Complementary

The Complementary color scheme is a pair of colors which are on the opposite of each other on the color wheel.



E02E66



2EE0A8

Split Complementary

Split-complementary colors differ from the complementary color scheme. The scheme consists of three colors, the original color and two neighbors of the complement color.



0091C5



E02E66



00904D

Square

The Square scheme is like the rectangle color scheme, but the four colors are evenly spaced on the color wheel.



E02E66



7E7C00



00928C



0079EF

Rectangle

The Rectangle color scheme consists of four colors that form a rectangle on the color wheel.



E02E66



BE5D00



00928C



008DE0

Sweetspot

The Sweet Spot groups the original color and five complimentary colors.



E02E66



FFC2D5



A82EE0



805B66



000000



808080

Same Dimension

The Same Dimension uses a secret algorithm to generate beautiful new colors.



E02E66



FF0D59



E04F2E



706569



B00037



30000F

Inverse Universe

The Inverse Universe completely reimagines the original color for something new.



E02E66



FF0D59



2EBFE0



706569



B00037



30000F

Previews

White Background



This preview shows how the Hex color E02E66 looks on a white background.

Color Contrast Check

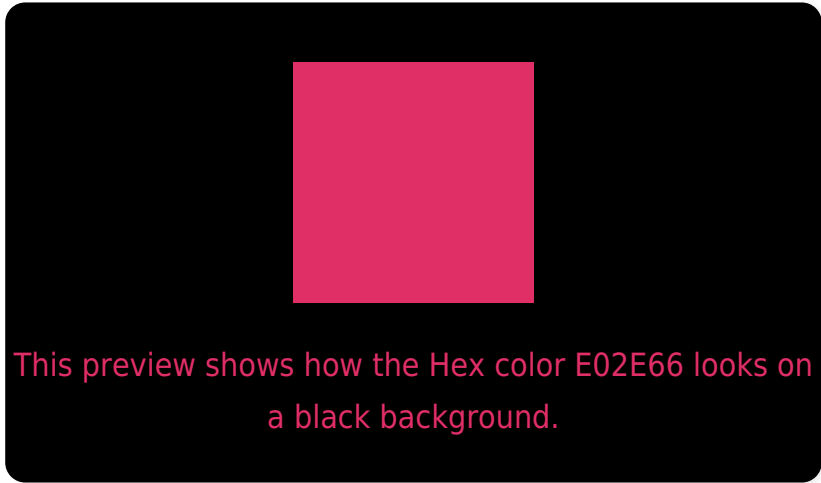
Large Text (above 18pt) WCAG AA ✓ Pass

Any Text WCAG AA × Fail

Large Text (above 18pt) WCAG AAA × Fail

Any Text WCAG AAA × Fail

Black Background



Color Contrast Check

Large Text (above 18pt) WCAG AA ✓ Pass

Any Text WCAG AA ✓ Pass

Large Text (above 18pt) WCAG AAA ✓ Pass

Any Text WCAG AAA × Fail

If you want to check with other color combinations, try the [Color Contrast Checker](#).

Hex E02E66 Background



This preview shows how black text looks on a background with the Hex color E02E66.

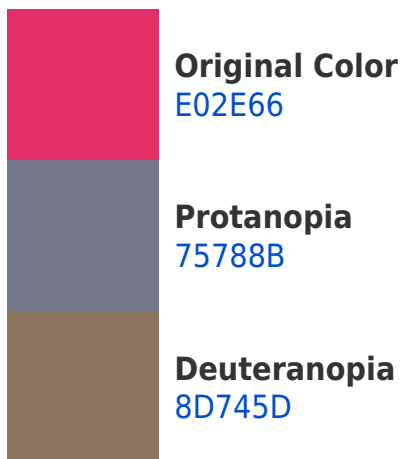



This preview shows how white text looks on a background with the Hex color E02E66.

Color Blindness Simulation

Color vision deficiency is a very complex topic, and I could not describe the different causes any better than Wikipedia does, so if you want to learn more, you should check out their [article about color blindness](#).

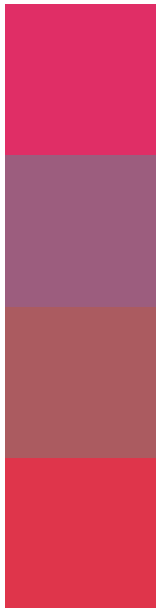
Dichromacy





Tritanopia
DE393B

Trichromacy



Original Color
E02E66

Protanomaly
9C5D7E

Deuteranomaly
AB5B60

Tritanomaly
DF354B

Monochromacy



Original Color
E02E66

Achromatopsia
6A6A6A

Achromatomaly
955469

CSS Examples

Text

The CSS property to change the color of the text to Hex E02E66 is called "color". The color property can be set on classes, ids or directly on the HTML element.

This example shows how text in the color #E02E66 looks like.

```
.text, #text, p{  
    color:#E02E66  
}
```

If you want to add a text shadow in that color use the text-shadow property, you can generate a text shadow directly with our [CSS Text Shadow Generator](#).

Here you see how black text with a 4 pixel #E02E66 colored shadow looks like.

```
.shadow{ text-shadow: 4px 4px 2px #E02E66  
}
```

Border

The CSS property to change the border of an element to Hex E02E66 is called "border". The border property can be set on classes, ids or directly on the HTML element.

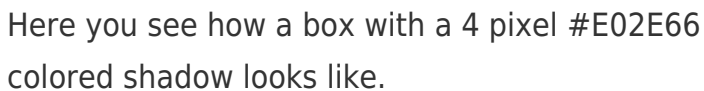
This example shows the color as border, it can be applied via the CSS property "border" or "border-color".

```
.border, #border, table{ border:4px solid  
#E02E66 }
```

If only the border color should be changed use the property `border-color`.

```
.border{ border-color:#E02E66 }
```

If you want to add a box shadow in that color use:



Here you see how a box with a 4 pixel #E02E66 colored shadow looks like.

```
.boxshadow{ -moz-box-shadow:4px 4px 4px  
4px #E02E66; -webkit-box-shadow:4px 4px  
4px 4px #E02E66; box-shadow:4px 4px 4px  
4px #E02E66 }
```

Background

The CSS property to change the background color of an element to Hex E02E66 is called "background". The background property can be set on classes, ids or directly on the HTML element.

```
.background, #background, body{  
background:#E02E66 }
```

If only the background color should be changed can be used:

```
.background{ background-color:#E02E66 }
```

This example shows the color as background, it is applied via the CSS property "background".

To optimize and compress your CSS code, you can use our [online CSS compressor and optimizer](#) based on csstidy. If you want to create a linear or radial gradient as background or border, check our [CSS Gradient Generator](#).

Hey! You found this booklet interesting? Support Converting Colors with the new Membership Option!

The pro membership hides all ads, plus gives you double the colors in the color bucket, and more awesome pro features!

[Learn more, Memberships starting at \\$2.50/m!](#)

**Follow me
on Twitter!**

@ConvertingColor