

Converting Colors

Hex(E03D70)

Have a look what the booklet for
Hex(E03D70) contains.

Hex(E03D70)	3
<i>Conversions</i>	4
<i>Details</i>	6
<i>Harmonies</i>	11
<i>Previews</i>	23
<i>Color Blindness Simulation</i>	26
<i>CSS Examples</i>	29

Color

Hex(E03D70)

Conversions

Conversions Part 1

Format	Color
Hex	E03D70
RGB	224, 61, 112
RGB Percent	88%, 24%, 44%
CMY	0.1216, 0.7608, 0.5608
CMYK	0.00, 0.73, 0.50, 0.12
HSL	341°, 72%, 56%
HSV	341°, 73%, 88%
XYZ	35.3338, 20.3546, 17.3958
YIQ	115.5510, 80.7770, 50.4170

Conversions

Conversions Part 2

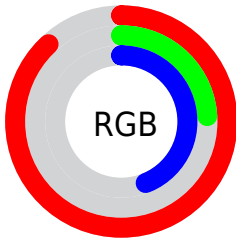
Format	Color
R_{YB}	224, 61, 112
Decimal	14695792
CIE Lab	52.24, 65.40, 9.12
CIE LCh	52, 66.032, 7.943
Yxy	20.3546, 0.4835, 0.2785
Android (android.graphics.Color)	4292885872 (0xFFE03D70)
YUV	115.5510, -1.7506, 95.1098
Hunter-Lab	45.1161, 60.8437, 8.7204

Details

The Hex color **E03D70** is a dark color, and the websafe version is hex **CC3366**. The color can be described as middle washed rose. A complement of this color would be **3DE0AD**, and the grayscale version is **747474**.

A 20% lighter version of the original color is **FF79A3**, and **A30041** is the 20% darker color. If you saturate the color by 10%, you get **E02761**, and if you desaturate by 10%, it is **E0537F**.

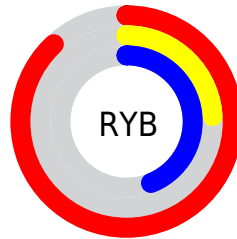
Distribution



Red (88%)

Green (24%)

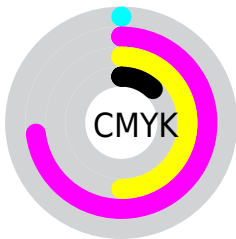
Blue (44%)



Red (88%)

Yellow (24%)

Blue (44%)

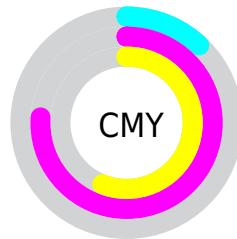


Cyan (0%)

Magenta (73%)

Yellow (50%)

Black (12%)



Cyan (12%)

Magenta (76%)

Yellow (56%)

Brightness & Saturation Gradients

These gradients show how the Hex color E03D70 changes by changing the brightness by 10 percent. The first figure shows a shift by +10% for each color and the second figure -10%.

Similar to the brightness gradients but the following saturation gradients show a change of the Hex color E03D70 by changing the saturation by 10% instead.

 E03D70

 E03D70

FFFFFF

 C11658

 FF79A3

 A30041

 FF95BE

 85002B

 FFB2DA

 670017

 FFCFF7

 4B0003

 FFEDFF

 2C0001

 000000

 E03D70

 E03D70

 E02761

 E0537F

 E01051

 E06A8F

 E00046

 E0809E

 E097AE

 E0ADBD

 E0C3CC

 E0DADC

 E0F0EB

 E0FFFB

Harmonies

Analogous

The Analogous color harmony consists of three colors that are next to each other on the color wheel.



CB4AA8



E03D70



D74F3A

Triad

The Triadic color harmony groups three colors that are evenly spaced from another and form a triangle on the color wheel.



E03D70



4B8C12



008EE6

Complementary

The Complementary color scheme is a pair of colors which are on the opposite of each other on the color wheel.



E03D70



3DE0AD

Split Complementary

Split-complementary colors differ from the complementary color scheme. The scheme consists of three colors, the original color and two neighbors of the complement color.



0095C1



E03D70



00934F

Square

The Square scheme is like the rectangle color scheme, but the four colors are evenly spaced on the color wheel.



E03D70



887F00



00968B



007FEE

Rectangle

The Rectangle color scheme consists of four colors that form a rectangle on the color wheel.



E03D70



C46115



00968B



0091DC

Sweetspot

The Sweet Spot groups the original color and five complimentary colors.



E03D70



FFC7D8



AC3DE0



805E69



000000



808080

Same Dimension

The Same Dimension uses a secret algorithm to generate beautiful new colors.



E03D70



FF2167



E05B3D



706568



B00037



30000F

Inverse Universe

The Inverse Universe completely reimagines the original color for something new.



E03D70



FF2167



3DC2E0



706568



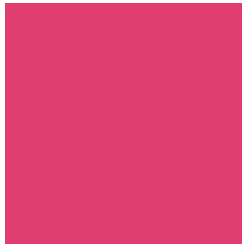
B00037



30000F

Previews

White Background



This preview shows how the Hex color E03D70 looks on a white background.

Color Contrast Check

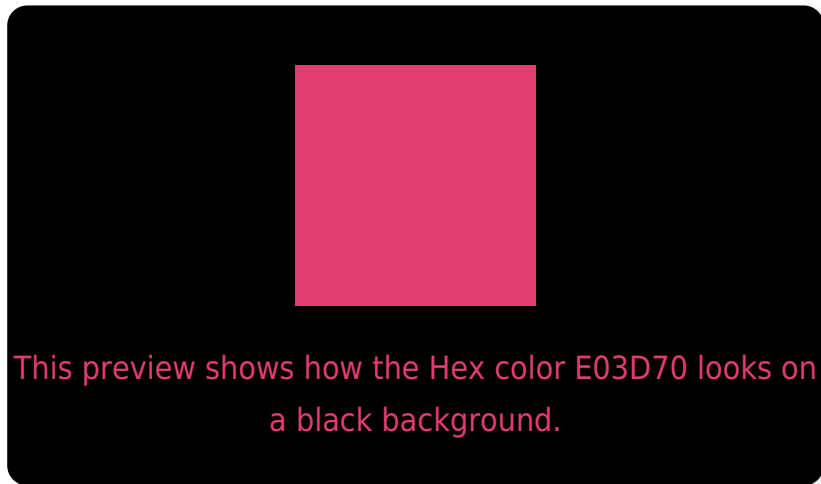
Large Text (above 18pt) WCAG AA ✓ Pass

Any Text WCAG AA × Fail

Large Text (above 18pt) WCAG AAA × Fail

Any Text WCAG AAA × Fail

Black Background



Color Contrast Check

Large Text (above 18pt) WCAG AA ✓ Pass

Any Text WCAG AA ✓ Pass

Large Text (above 18pt) WCAG AAA ✓ Pass

Any Text WCAG AAA × Fail

If you want to check with other color combinations, try the [Color Contrast Checker](#).

Hex E03D70 Background



This preview shows how black text looks on a background with the Hex color E03D70.

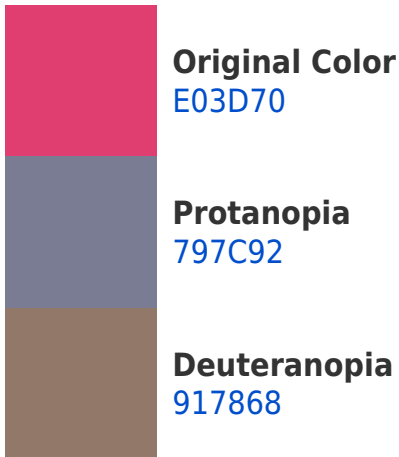


This preview shows how white text looks on a background with the Hex color E03D70.

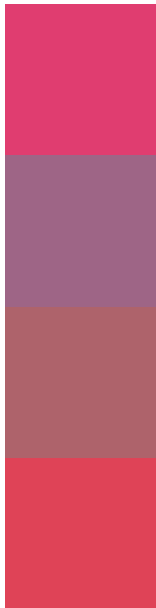
Color Blindness Simulation

Color vision deficiency is a very complex topic, and I could not describe the different causes any better than Wikipedia does, so if you want to learn more, you should check out their [article about color blindness](#).

Dichromacy



Trichromacy



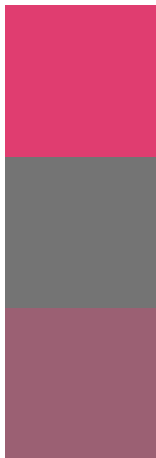
Original Color
E03D70

Protanomaly
9E6586

Deuteranomaly
AE636B

Tritanomaly
DF4357

Monochromacy



Original Color
E03D70

Achromatopsia
747474

Achromatomaly
9B6073

CSS Examples

Text

The CSS property to change the color of the text to Hex E03D70 is called "color". The color property can be set on classes, ids or directly on the HTML element.

This example shows how text in the color #E03D70 looks like.

```
.text, #text, p{  
    color:#E03D70  
}
```

If you want to add a text shadow in that color use the text-shadow property, you can generate a text shadow directly with our [CSS Text Shadow Generator](#).

Here you see how black text with a 4 pixel #E03D70 colored shadow looks like.

```
.shadow{ text-shadow: 4px 4px 2px #E03D70
}
```

Border

The CSS property to change the border of an element to Hex E03D70 is called "border". The border property can be set on classes, ids or directly on the HTML element.

This example shows the color as border, it can be applied via the CSS property "border" or "border-color".

```
.border, #border, table{ border:4px solid
#E03D70 }
```

If only the border color should be changed use the property `border-color`.

```
.border{ border-color:#E03D70 }
```

If you want to add a box shadow in that color use:

Here you see how a box with a 4 pixel #E03D70 colored shadow looks like.

```
.boxshadow{ -moz-box-shadow:4px 4px 4px  
4px #E03D70; -webkit-box-shadow:4px 4px  
4px 4px #E03D70; box-shadow:4px 4px 4px  
4px #E03D70 }
```

Background

The CSS property to change the background color of an element to Hex E03D70 is called "background". The background property can be set on classes, ids or directly on the HTML element.

```
.background, #background, body{  
background:#E03D70 }
```

If only the background color should be changed can be used:

```
.background{ background-color:#E03D70 }
```

This example shows the color as background, it is applied via the CSS property "background".

To optimize and compress your CSS code, you can use our [online CSS compressor and optimizer](#) based on csstidy. If you want to create a linear or radial gradient as background or border, check our [CSS Gradient Generator](#).

Hey! You found this booklet interesting? Support Converting Colors with the new Membership Option!

The pro membership hides all ads, plus gives you double the colors in the color bucket, and more awesome pro features!

[Learn more, Memberships starting at \\$2.50/m!](#)

**Follow me
on Twitter!**

@ConvertingColor