

Converting Colors

Hex(E03F70)

Have a look what the booklet for
Hex(E03F70) contains.

Hex(E03F70)	3
<i>Conversions</i>	4
<i>Details</i>	6
<i>Harmonies</i>	11
<i>Previews</i>	23
<i>Color Blindness Simulation</i>	26
<i>CSS Examples</i>	29

Color

Hex(E03F70)

Conversions

Conversions Part 1

Format	Color
Hex	E03F70
RGB	224, 63, 112
RGB Percent	88%, 25%, 44%
CMY	0.1216, 0.7529, 0.5608
CMYK	0.00, 0.72, 0.50, 0.12
HSL	342°, 72%, 56%
HSV	342°, 72%, 88%
XYZ	35.4426, 20.5722, 17.4320
YIQ	116.7250, 80.2270, 49.3710

Conversions

Conversions Part 2

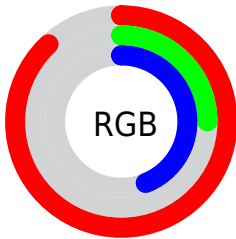
Format	Color
R_{YB}	224, 63, 112
Decimal	14696304
CIE _{Lab}	52.48, 64.72, 9.47
CIE _{LCh}	52, 65.411, 8.321
Yxy	20.5722, 0.4826, 0.2801
Android (android.graphics.Color)	4292886384 (0xFFE03F70)
YUV	116.7250, -2.3294, 94.0802
Hunter-Lab	45.3565, 60.1099, 8.9625

Details

The Hex color **E03F70** is a dark color, and the websafe version is hex **CC3366**. The color can be described as middle washed rose. A complement of this color would be **3FE0AF**, and the grayscale version is **757575**.

A 20% lighter version of the original color is **FF7AA3**, and **A30041** is the 20% darker color. If you saturate the color by 10%, you get **E02960**, and if you desaturate by 10%, it is **E05580**.

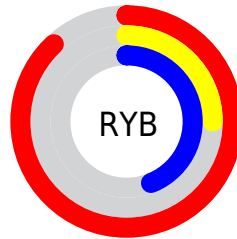
Distribution



Red (88%)

Green (25%)

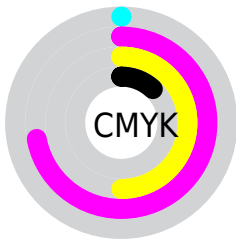
Blue (44%)



Red (88%)

Yellow (25%)

Blue (44%)

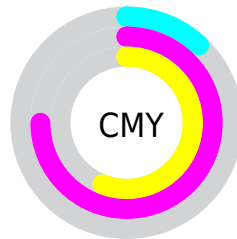


Cyan (0%)

Magenta (72%)

Yellow (50%)

Black (12%)



Cyan (12%)

Magenta (75%)

Yellow (56%)

Brightness & Saturation Gradients

These gradients show how the Hex color E03F70 changes by changing the brightness by 10 percent. The first figure shows a shift by +10% for each color and the second figure -10%.

Similar to the brightness gradients but the following saturation gradients show a change of the Hex color E03F70 by changing the saturation by 10% instead.

 E03F70

 E03F70

FFFFFF

 C11A58

 FF7AA3

 A30041

 FF97BE

 85002B

 FFB4DA

 670017

 FFD1F7

 4B0002

 FFEFFF

 2C0001

 000000

 E03F70

 E03F70

 E02960

 E05580

 E01251

 E06C8F

 E00044

 E0829F

 E099AE

 E0AFBE

 E0C5CD

 E0DCDD

 E0F2ED

 E0FFFC

Harmonies

Analogous

The Analogous color harmony consists of three colors that are next to each other on the color wheel.



CB4BA8



E03F70



D7513A

Triad

The Triadic color harmony groups three colors that are evenly spaced from another and form a triangle on the color wheel.



E03F70



4B8D16



008EE6

Complementary

The Complementary color scheme is a pair of colors which are on the opposite of each other on the color wheel.



E03F70



3FE0AF

Split Complementary

Split-complementary colors differ from the complementary color scheme. The scheme consists of three colors, the original color and two neighbors of the complement color.



0095C2



E03F70



009451

Square

The Square scheme is like the rectangle color scheme, but the four colors are evenly spaced on the color wheel.



E03F70



888000



00978C



007FED

Rectangle

The Rectangle color scheme consists of four colors that form a rectangle on the color wheel.



E03F70



C46316



00978C



0091DD

Sweetspot

The Sweet Spot groups the original color and five complimentary colors.



E03F70



FFC7D8



AD3FE0



805E68



000000



808080

Same Dimension

The Same Dimension uses a secret algorithm to generate beautiful new colors.



E03F70



FF2466



E05D3F



706568



B00036



30000F

Inverse Universe

The Inverse Universe completely reimagines the original color for something new.



E03F70



FF2466



3FC2E0



706568



B00036



30000F

Previews

White Background



This preview shows how the Hex color E03F70 looks on a white background.

Color Contrast Check

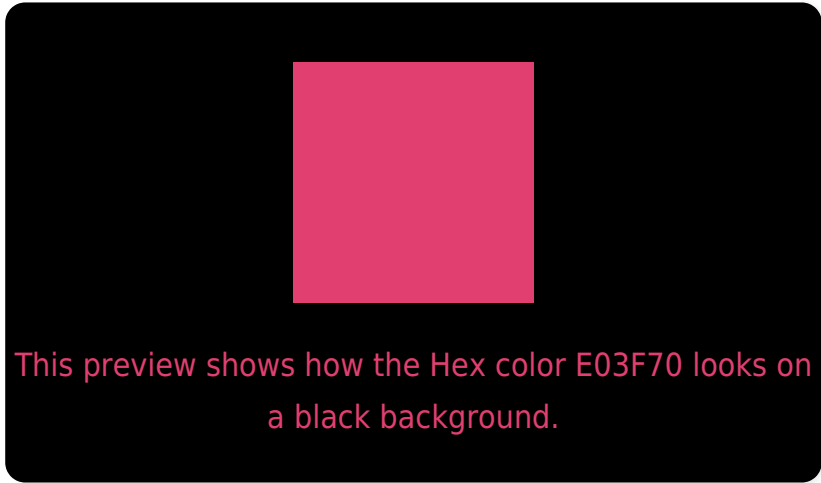
Large Text (above 18pt) WCAG AA ✓ Pass

Any Text WCAG AA ✗ Fail

Large Text (above 18pt) WCAG AAA ✗ Fail

Any Text WCAG AAA ✗ Fail

Black Background



Color Contrast Check

Large Text (above 18pt) WCAG AA ✓ Pass

Any Text WCAG AA ✓ Pass

Large Text (above 18pt) WCAG AAA ✓ Pass

Any Text WCAG AAA × Fail

If you want to check with other color combinations, try the [Color Contrast Checker](#).

Hex E03F70 Background



This preview shows how black text looks on a background with the Hex color E03F70.

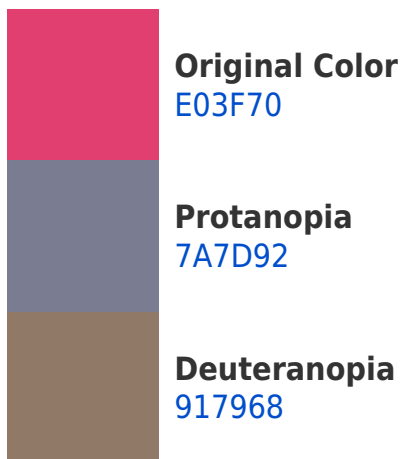



This preview shows how white text looks on a background with the Hex color E03F70.

Color Blindness Simulation

Color vision deficiency is a very complex topic, and I could not describe the different causes any better than Wikipedia does, so if you want to learn more, you should check out their [article about color blindness](#).

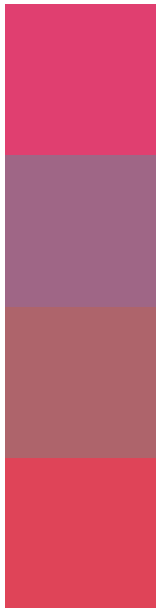
Dichromacy





Tritanopia
DE474B

Trichromacy



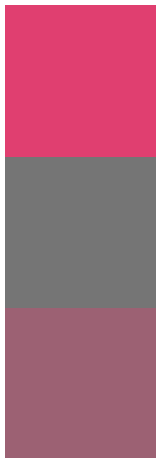
Original Color
E03F70

Protanomaly
9F6686

Deuteranomaly
AE646B

Tritanomaly
DF4458

Monochromacy



Original Color
E03F70

Achromatopsia
757575

Achromatomaly
9C6173

CSS Examples

Text

The CSS property to change the color of the text to Hex E03F70 is called "color". The color property can be set on classes, ids or directly on the HTML element.

This example shows how text in the color #E03F70 looks like.

```
.text, #text, p{  
    color:#E03F70  
}
```

If you want to add a text shadow in that color use the text-shadow property, you can generate a text shadow directly with our [CSS Text Shadow Generator](#).

Here you see how black text with a 4 pixel #E03F70 colored shadow looks like.

```
.shadow{ text-shadow: 4px 4px 2px #E03F70
}
```

Border

The CSS property to change the border of an element to Hex E03F70 is called "border". The border property can be set on classes, ids or directly on the HTML element.

This example shows the color as border, it can be applied via the CSS property "border" or "border-color".

```
.border, #border, table{ border:4px solid
#E03F70 }
```

If only the border color should be changed use the property `border-color`.

```
.border{ border-color:#E03F70 }
```

If you want to add a box shadow in that color use:

Here you see how a box with a 4 pixel #E03F70 colored shadow looks like.

```
.boxshadow{ -moz-box-shadow:4px 4px 4px  
4px #E03F70; -webkit-box-shadow:4px 4px  
4px 4px #E03F70; box-shadow:4px 4px 4px  
4px #E03F70 }
```

Background

The CSS property to change the background color of an element to Hex E03F70 is called "background". The background property can be set on classes, ids or directly on the HTML element.

```
.background, #background, body{  
background:#E03F70 }
```

If only the background color should be changed can be used:

```
.background{ background-color:#E03F70 }
```

This example shows the color as background, it is applied via the CSS property "background".

To optimize and compress your CSS code, you can use our [online CSS compressor and optimizer](#) based on csstidy. If you want to create a linear or radial gradient as background or border, check our [CSS Gradient Generator](#).

Hey! You found this booklet interesting? Support Converting Colors with the new Membership Option!

The pro membership hides all ads, plus gives you double the colors in the color bucket, and more awesome pro features!

[Learn more, Memberships starting at \\$2.50/m!](#)

**Follow me
on Twitter!**

@ConvertingColor