

Converting Colors

Hex(E04683)

Have a look what the booklet for
Hex(E04683) contains.

| | |
|--|----|
| Hex(E04683) | 3 |
| <i>Conversions</i> | 4 |
| <i>Details</i> | 6 |
| <i>Harmonies</i> | 11 |
| <i>Previews</i> | 23 |
| <i>Color Blindness Simulation</i> | 26 |
| <i>CSS Examples</i> | 29 |

Color

Hex(E04683)

Conversions

Conversions Part 1

| Format | Color |
|---------------|----------------------------|
| Hex | E04683 |
| RGB | 224, 70, 131 |
| RGB Percent | 88%, 27%, 51% |
| CMY | 0.1216, 0.7255, 0.4863 |
| CMYK | 0.00, 0.69, 0.42, 0.12 |
| HSL | 336°, 71%, 58% |
| HSV | 336°, 69%, 88% |
| XYZ | 37.0274, 21.8663, 23.7418 |
| YIQ | 123.0000, 72.2030, 51.6190 |

Conversions

Conversions Part 2

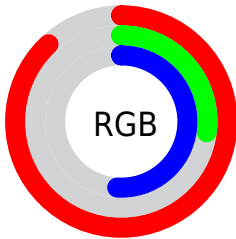
| Format | Color |
|-------------------------------------|------------------------------|
| R_{YB} | 224, 70, 131 |
| Decimal | 14698115 |
| CIE _{Lab} | 53.88, 63.94, 0.11 |
| CIE _{LCh} | 54, 63.945, 0.101 |
| Yxy | 21.8663, 0.4481, 0.2646 |
| Android (android.graphics.Color) | 4292888195 (0xFFE04683) |
| YUV | 123.0000, 3.9440, 88.5770 |
| Hunter-Lab | 46.7614, 59.5102, 2.6302 |

Details

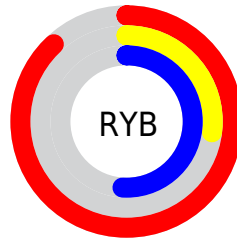
The Hex color **E04683** is a dark color, and the websafe version is hex **CC3366**. The color can be described as middle muted rose. A complement of this color would be **46E0A3**, and the grayscale version is **7B7B7B**.

A 20% lighter version of the original color is **FF80B8**, and **A40052** is the 20% darker color. If you saturate the color by 10%, you get **E03075**, and if you desaturate by 10%, it is **E05C91**.

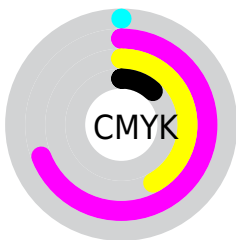
Distribution



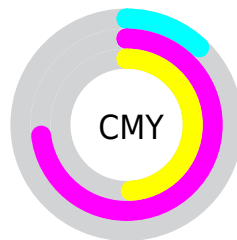
- Red (88%)
- Green (27%)
- Blue (51%)



- Red (88%)
- Yellow (27%)
- Blue (51%)



- Cyan (0%)
- Magenta (69%)
- Yellow (42%)
- Black (12%)



- Cyan (12%)
- Magenta (73%)
- Yellow (49%)

Brightness & Saturation Gradients

These gradients show how the Hex color E04683 changes by changing the brightness by 10 percent. The first figure shows a shift by +10% for each color and the second figure -10%.

Similar to the brightness gradients but the following saturation gradients show a change of the Hex color E04683 by changing the saturation by 10% instead.

 E04683

 E04683

FFFFFF

 C2256A

 FF80B8

 A40052

 FF9DD3

 86003B

 FFBAF0

 690026

 FFD7FF

 4D0011

 FFF4FF

 300002

 000000

 E04683

 E04683

 E03075

 E05C91

 E01968

 E0739E

 E0035A

 E089AC

 E00059

 E0A0B9

 E0B6C7

 E0CCD4

 E0E3E2

 E0F9EF

 E0FFFD

Harmonies

Analogous

The Analogous color harmony consists of three colors that are next to each other on the color wheel.



C257B9



E04683



DE504D

Triad

The Triadic color harmony groups three colors that are evenly spaced from another and form a triangle on the color wheel.



E04683



638D0B



0094E0

Complementary

The Complementary color scheme is a pair of colors which are on the opposite of each other on the color wheel.



E04683



46E0A3

Split Complementary

Split-complementary colors differ from the complementary color scheme. The scheme consists of three colors, the original color and two neighbors of the complement color.



0099B7



E04683



009646

Square

The Square scheme is like the rectangle color scheme, but the four colors are evenly spaced on the color wheel.



E04683



9A7E00



009A7F



0087F0

Rectangle

The Rectangle color scheme consists of four colors that form a rectangle on the color wheel.



E04683



CF602C



009A7F



0097D5

Sweetspot

The Sweet Spot groups the original color and five complimentary colors.



E04683



FFC9DF



A246E0



80606C



000000



808080

Same Dimension

The Same Dimension uses a secret algorithm to generate beautiful new colors.



E04683



FF2B7F



E05546



706569



B00046



300013

Inverse Universe

The Inverse Universe completely reimagines the original color for something new.



E04683



FF2B7F



46D1E0



706569



B00046



300013

Previews

White Background



This preview shows how the Hex color E04683 looks on a white background.

Color Contrast Check

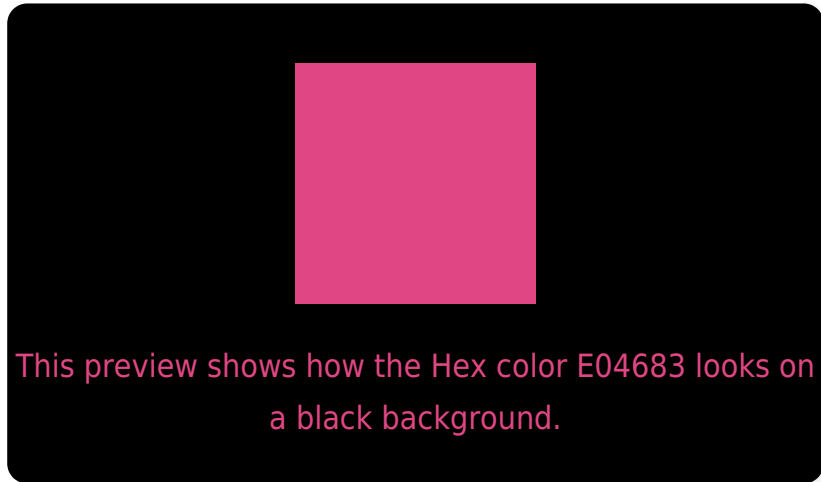
Large Text (above 18pt) WCAG AA ✓ Pass

Any Text WCAG AA × Fail

Large Text (above 18pt) WCAG AAA × Fail

Any Text WCAG AAA × Fail

Black Background



Color Contrast Check

Large Text (above 18pt) WCAG AA ✓ Pass

Any Text WCAG AA ✓ Pass

Large Text (above 18pt) WCAG AAA ✓ Pass

Any Text WCAG AAA × Fail

If you want to check with other color combinations, try the [Color Contrast Checker](#).

Hex E04683 Background



This preview shows how black text looks on a background with the Hex color E04683.



This preview shows how white text looks on a background with the Hex color E04683.

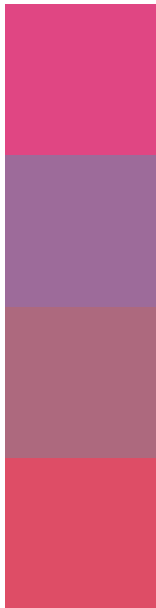
Color Blindness Simulation

Color vision deficiency is a very complex topic, and I could not describe the different causes any better than Wikipedia does, so if you want to learn more, you should check out their [article about color blindness](#).

Dichromacy



Trichromacy



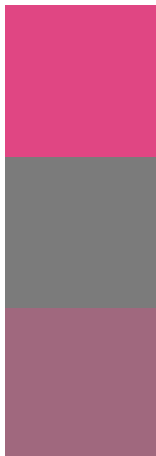
Original Color
E04683

Protanomaly
9D6B9A

Deuteranomaly
AD697E

Tritanomaly
DE4D66

Monochromacy



Original Color
E04683

Achromatopsia
7B7B7B

Achromatomaly
A0687E

CSS Examples

Text

The CSS property to change the color of the text to Hex E04683 is called "color". The color property can be set on classes, ids or directly on the HTML element.

This example shows how text in the color #E04683 looks like.

```
.text, #text, p{  
    color:#E04683  
}
```

If you want to add a text shadow in that color use the text-shadow property, you can generate a text shadow directly with our [CSS Text Shadow Generator](#).

Here you see how black text with a 4 pixel #E04683 colored shadow looks like.

```
.shadow{ text-shadow: 4px 4px 2px #E04683
}
```

Border

The CSS property to change the border of an element to Hex E04683 is called "border". The border property can be set on classes, ids or directly on the HTML element.

This example shows the color as border, it can be applied via the CSS property "border" or "border-color".

```
.border, #border, table{ border:4px solid
#E04683 }
```

If only the border color should be changed use the property `border-color`.

```
.border{ border-color:#E04683 }
```

If you want to add a box shadow in that color use:

Here you see how a box with a 4 pixel #E04683 colored shadow looks like.

```
.boxshadow{ -moz-box-shadow:4px 4px 4px  
4px #E04683; -webkit-box-shadow:4px 4px  
4px 4px #E04683; box-shadow:4px 4px 4px  
4px #E04683 }
```

Background

The CSS property to change the background color of an element to Hex E04683 is called "background". The background property can be set on classes, ids or directly on the HTML element.

```
.background, #background, body{  
background:#E04683 }
```

If only the background color should be changed can be used:

```
.background{ background-color:#E04683 }
```

This example shows the color as background, it is applied via the CSS property "background".

To optimize and compress your CSS code, you can use our [online CSS compressor and optimizer](#) based on csstidy. If you want to create a linear or radial gradient as background or border, check our [CSS Gradient Generator](#).

Hey! You found this booklet interesting? Support Converting Colors with the new Membership Option!

The pro membership hides all ads, plus gives you double the colors in the color bucket, and more awesome pro features!

[Learn more, Memberships starting at \\$2.50/m!](#)

**Follow me
on Twitter!**

@ConvertingColor