

# Converting Colors

Hex(E0497E)

Have a look what the booklet for  
Hex(E0497E) contains.

<b>Hex(E0497E)</b> .....	3
<i><b>Conversions</b></i> .....	4
<i><b>Details</b></i> .....	6
<i><b>Harmonies</b></i> .....	11
<i><b>Previews</b></i> .....	23
<i><b>Color Blindness Simulation</b></i> .....	26
<i><b>CSS Examples</b></i> .....	29

**Color**

**Hex(E0497E)**

# Conversions

## Conversions Part 1

<b>Format</b>	<b>Color</b>
Hex	E0497E
RGB	224, 73, 126
RGB Percent	88%, 29%, 49%
CMY	0.1216, 0.7137, 0.5059
CMYK	0.00, 0.67, 0.44, 0.12
HSL	339°, 71%, 58%
HSV	339°, 67%, 88%
XYZ	36.8889, 22.1187, 22.0637
YIQ	124.1910, 72.9830, 48.4950

# Conversions

## Conversions Part 2

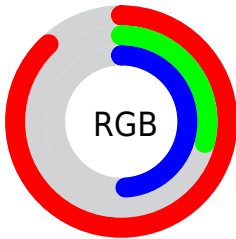
<b>Format</b>	<b>Color</b>
<b>R<sub>YB</sub></b>	224, 73, 126
Decimal	14698878
CIE <sub>Lab</sub>	54.15, 62.33, 3.48
CIE <sub>LCh</sub>	54, 62.431, 3.196
Yxy	22.1187, 0.4550, 0.2728
Android (android.graphics.Color)	4292888958 (0xFFE0497E)
YUV	124.1910, 0.8918, 87.5325
Hunter-Lab	47.0306, 57.7048, 5.1063

# Details

The Hex color **E0497E** is a dark color, and the websafe version is hex **CC3366**. The color can be described as middle muted rose. A complement of this color would be **49E0AB**, and the grayscale version is **7C7C7C**.

A 20% lighter version of the original color is **FF82B2**, and **A4004D** is the 20% darker color. If you saturate the color by 10%, you get **E0336F**, and if you desaturate by 10%, it is **E05F8D**.

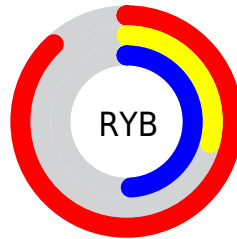
# Distribution



Red (88%)

Green (29%)

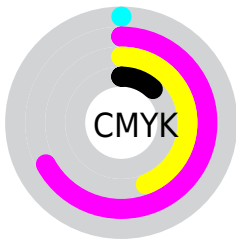
Blue (49%)



Red (88%)

Yellow (29%)

Blue (49%)

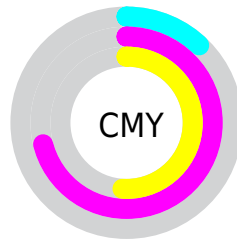


Cyan (0%)

Magenta (67%)

Yellow (44%)

Black (12%)



Cyan (12%)

Magenta (71%)

Yellow (51%)

# Brightness & Saturation Gradients

These gradients show how the Hex color E0497E changes by changing the brightness by 10 percent. The first figure shows a shift by +10% for each color and the second figure -10%.

Similar to the brightness gradients but the following saturation gradients show a change of the Hex color E0497E by changing the saturation by 10% instead.



 E0497E

 E0497E

FFFFFF

 C22965

 FF82B2

 A4004D

 FF9FCE

 860037

 FFBCEA

 690022

 FFD9FF

 4D000A

 FFF7FF

 300002

 000000

 E0497E

 E0497E

 E0336F

 E05F8D

 E01C61

 E0769B

 E00652

 E08CAA

 E0004F

 E0A3B8

 E0B9C7

 E0CFD5

 E0E6E4

 E0FCF2

 E0FFFF

# Harmonies

## Analogous

The Analogous color harmony consists of three colors that are next to each other on the color wheel.



C657B3



E0497E



DC554A

# Triad

The Triadic color harmony groups three colors that are evenly spaced from another and form a triangle on the color wheel.



E0497E



5F8F19



0094E2

# Complementary

The Complementary color scheme is a pair of colors which are on the opposite of each other on the color wheel.



E0497E



49E0AB

# Split Complementary

Split-complementary colors differ from the complementary color scheme. The scheme consists of three colors, the original color and two neighbors of the complement color.



0099BB



E0497E



00974E

# Square

The Square scheme is like the rectangle color scheme, but the four colors are evenly spaced on the color wheel.



E0497E



968100



009A86



0086EE

# Rectangle

The Rectangle color scheme consists of four colors that form a rectangle on the color wheel.



E0497E



CC642A



009A86



0096D7



# Sweetspot

The Sweet Spot groups the original color and five complimentary colors.



E0497E



FFCCDE



A949E0



80616C



000000



808080



# Same Dimension

The Same Dimension uses a secret algorithm to generate beautiful new colors.



E0497E



FF3079



E05D49



706569



B0003E



300011



# Inverse Universe

The Inverse Universe completely reimagines the original color for something new.



E0497E



FF3079



49CCE0



706569



B0003E

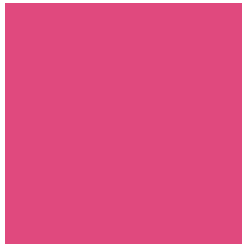


300011



# Previews

## White Background



This preview shows how the Hex color E0497E looks on a white background.

## Color Contrast Check

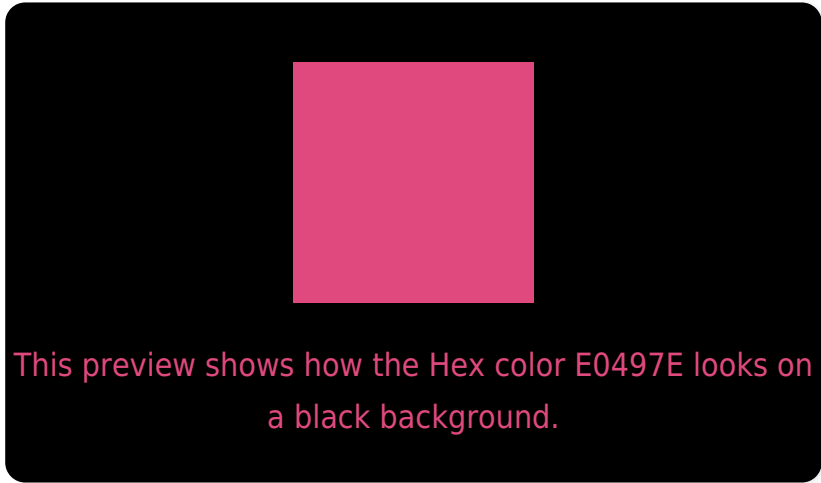
Large Text (above 18pt) WCAG AA ✓ Pass

Any Text WCAG AA ✗ Fail

Large Text (above 18pt) WCAG AAA ✗ Fail

Any Text WCAG AAA ✗ Fail

# Black Background



## Color Contrast Check

Large Text (above 18pt) WCAG AA ✓ Pass

Any Text WCAG AA ✓ Pass

Large Text (above 18pt) WCAG AAA ✓ Pass

Any Text WCAG AAA × Fail

If you want to check with other color combinations, try the [Color Contrast Checker](#).



## Hex E0497E Background



This preview shows how black text looks on a background with the Hex color E0497E.



This preview shows how white text looks on a background with the Hex color E0497E.

# Color Blindness Simulation

Color vision deficiency is a very complex topic, and I could not describe the different causes any better than Wikipedia does, so if you want to learn more, you should check out their [article about color blindness](#).

## Dichromacy



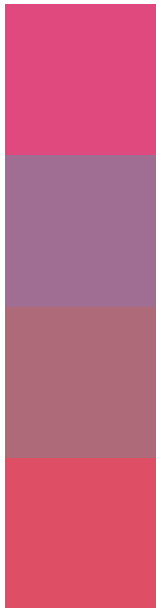
**Original Color**  
E0497E

**Protanopia**  
7B819F

**Deuteranopia**  
937D77



# Trichromacy



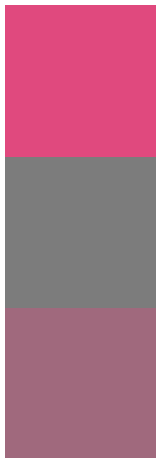
**Original Color**  
E0497E

**Protanomaly**  
A06D93

**Deuteranomaly**  
AF6A7A

**Tritanomaly**  
DE4F65

# Monochromacy



**Original Color**  
E0497E

**Achromatopsia**  
7C7C7C

**Achromatomaly**  
A0697D

# CSS Examples

## Text

The CSS property to change the color of the text to Hex E0497E is called "color". The color property can be set on classes, ids or directly on the HTML element.

This example shows how text in the color #E0497E looks like.

```
.text, #text, p{  
    color:#E0497E  
}
```

If you want to add a text shadow in that color use the text-shadow property, you can generate a text shadow directly with our [CSS Text Shadow Generator](#).

Here you see how black text with a 4 pixel #E0497E colored shadow looks like.

```
.shadow{ text-shadow: 4px 4px 2px #E0497E
}
```

## Border

The CSS property to change the border of an element to Hex E0497E is called "border". The border property can be set on classes, ids or directly on the HTML element.

This example shows the color as border, it can be applied via the CSS property "border" or "border-color".

```
.border, #border, table{ border:4px solid
#E0497E }
```

If only the border color should be changed use the property border-color.

```
.border{ border-color:#E0497E }
```

If you want to add a box shadow in that color use:

Here you see how a box with a 4 pixel #E0497E colored shadow looks like.

```
.boxshadow{ -moz-box-shadow:4px 4px 4px  
4px #E0497E; -webkit-box-shadow:4px 4px  
4px 4px #E0497E; box-shadow:4px 4px 4px  
4px #E0497E }
```

# Background

The CSS property to change the background color of an element to Hex E0497E is called "background". The background property can be set on classes, ids or directly on the HTML element.

```
.background, #background, body{  
background:#E0497E }
```

If only the background color should be changed can be used:

```
.background{ background-color:#E0497E }
```

This example shows the color as background, it is applied via the CSS property "background".

To optimize and compress your CSS code, you can use our [online CSS compressor and optimizer](#) based on csstidy. If you want to create a linear or radial gradient as background or border, check our [CSS Gradient Generator](#).



Hey! You found this booklet interesting? Support Converting Colors with the new Membership Option!

The pro membership hides all ads, plus gives you double the colors in the color bucket, and more awesome pro features!

**[Learn more, Memberships starting at \\$2.50/m!](#)**

**Follow me  
on Twitter!**

@ConvertingColor