

Converting Colors

Hex(E05B81)

Have a look what the booklet for
Hex(E05B81) contains.

Hex(E05B81)	3
<i>Conversions</i>	4
<i>Details</i>	6
<i>Harmonies</i>	11
<i>Previews</i>	23
<i>Color Blindness Simulation</i>	26
<i>CSS Examples</i>	29

Color

Hex(E05B81)

Conversions

Conversions Part 1

Format	Color
Hex	E05B81
RGB	224, 91, 129
RGB Percent	88%, 36%, 51%
CMY	0.1216, 0.6431, 0.4941
CMYK	0.00, 0.59, 0.42, 0.12
HSL	343°, 68%, 62%
HSV	343°, 59%, 88%
XYZ	38.4440, 24.9144, 23.5516
YIQ	135.0990, 67.0700, 40.0140

Conversions

Conversions Part 2

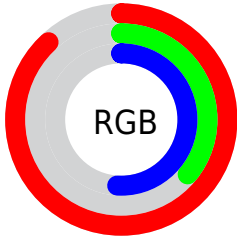
Format	Color
R _Y B	224, 91, 129
Decimal	14703489
CIE Lab	56.99, 55.15, 5.79
CIE LCh	57, 55.454, 5.996
Yxy	24.9144, 0.4423, 0.2867
Android (android.graphics.Color)	4292893569 (0xFFE05B81)
YUV	135.0990, -3.0068, 77.9662
Hunter-Lab	49.9144, 50.1304, 6.9646

Details

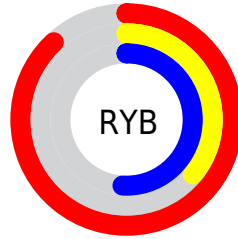
The Hex color **E05B81** is a light color, and the websafe version is hex **FF6699**. The color can be described as light muted rose. A complement of this color would be **5BE0BA**, and the grayscale version is **878787**.

A 20% lighter version of the original color is **FF92B6**, and **A42050** is the 20% darker color. If you saturate the color by 10%, you get **E04571**, and if you desaturate by 10%, it is **E07191**.

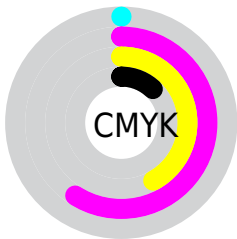
Distribution



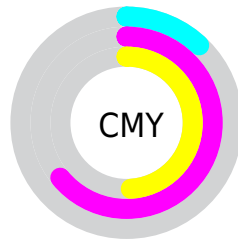
- Red (88%)
- Green (36%)
- Blue (51%)



- Red (88%)
- Yellow (36%)
- Blue (51%)



- Cyan (0%)
- Magenta (59%)
- Yellow (42%)
- Black (12%)



- Cyan (12%)
- Magenta (64%)
- Yellow (49%)

Brightness & Saturation Gradients

These gradients show how the Hex color E05B81 changes by changing the brightness by 10 percent. The first figure shows a shift by +10% for each color and the second figure -10%.

Similar to the brightness gradients but the following saturation gradients show a change of the Hex color E05B81 by changing the saturation by 10% instead.

 E05B81

 E05B81

FFFFFF

 C23F68

 FF92B6

 A42050

 FFAED1

 870039

 FFCBED

 6A0024

 FFE8FF

 4E000F

 340002

 000000

 E05B81

 E05B81

 E04571

 E07191

 E02E61

 E088A1

 E01851

 E09EB1

 E00141

 E0B5C1

 E00040

 E0CBD1

 E0E1E1

 E0F8F1

 E0FFFF

Harmonies

Analogous

The Analogous color harmony consists of three colors that are next to each other on the color wheel.



CB64B1



E05B81



DB6553

Triad

The Triadic color harmony groups three colors that are evenly spaced from another and form a triangle on the color wheel.



E05B81



669635



0098E1

Complementary

The Complementary color scheme is a pair of colors which are on the opposite of each other on the color wheel.



E05B81



5BE0BA

Split Complementary

Split-complementary colors differ from the complementary color scheme. The scheme consists of three colors, the original color and two neighbors of the complement color.



009FC0



E05B81



009D5F

Square

The Square scheme is like the rectangle color scheme, but the four colors are evenly spaced on the color wheel.



E05B81



998A1D



00A091



2C8BE9

Rectangle

The Rectangle color scheme consists of four colors that form a rectangle on the color wheel.



E05B81



CB7138



00A091



009BD8

Sweetspot

The Sweet Spot groups the original color and five complimentary colors.



E05B81



FFD1DE



B85BE0



80636B



000000



808080

Same Dimension

The Same Dimension uses a secret algorithm to generate beautiful new colors.



E05B81



FF4A7E



E0765B



706568



B00032



30000E

Inverse Universe

The Inverse Universe completely reimagines the original color for something new.



E05B81



FF4A7E



5BC5E0



706568



B00032



30000E

Previews

White Background



This preview shows how the Hex color E05B81 looks on a white background.

Color Contrast Check

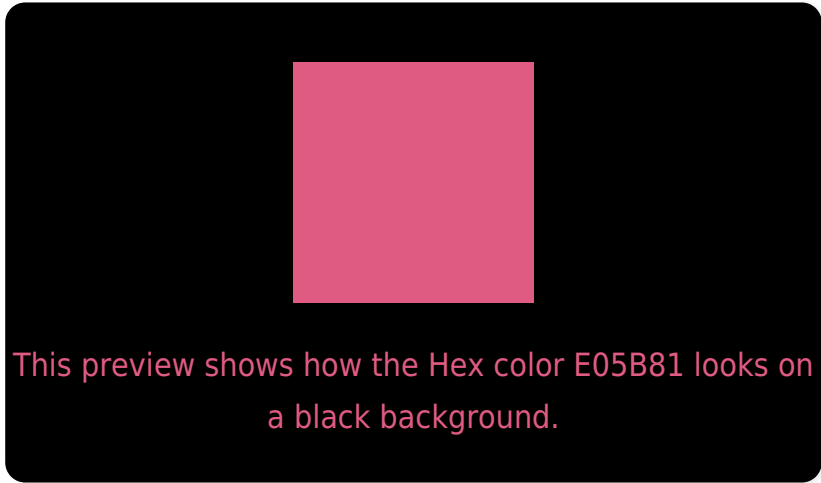
Large Text (above 18pt) WCAG AA ✓ Pass

Any Text WCAG AA × Fail

Large Text (above 18pt) WCAG AAA × Fail

Any Text WCAG AAA × Fail

Black Background



Color Contrast Check

Large Text (above 18pt) WCAG AA ✓ Pass

Any Text WCAG AA ✓ Pass

Large Text (above 18pt) WCAG AAA ✓ Pass

Any Text WCAG AAA × Fail

If you want to check with other color combinations, try the [Color Contrast Checker](#).

Hex E05B81 Background



This preview shows how black text looks on a background with the Hex color E05B81.

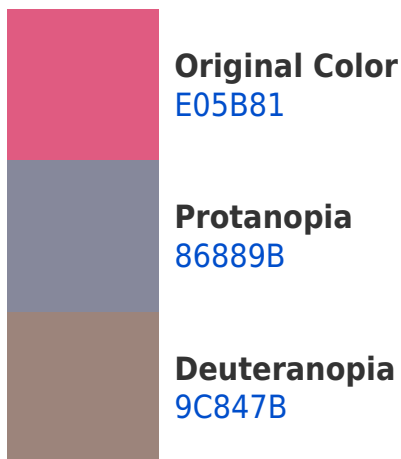


This preview shows how white text looks on a background with the Hex color E05B81.

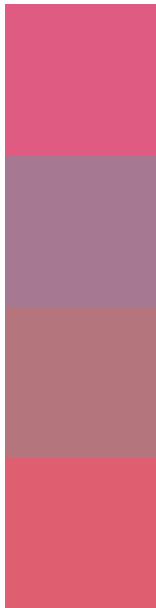
Color Blindness Simulation

Color vision deficiency is a very complex topic, and I could not describe the different causes any better than Wikipedia does, so if you want to learn more, you should check out their [article about color blindness](#).

Dichromacy



Trichromacy



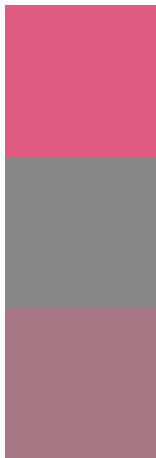
Original Color
E05B81

Protanomaly
A77892

Deuteranomaly
B5757D

Tritanomaly
DF5E70

Monochromacy



Original Color
E05B81

Achromatopsia
878787

Achromatomaly
A77785

CSS Examples

Text

The CSS property to change the color of the text to Hex E05B81 is called "color". The color property can be set on classes, ids or directly on the HTML element.

This example shows how text in the color #E05B81 looks like.

```
.text, #text, p{  
  color:#E05B81  
}
```

If you want to add a text shadow in that color use the text-shadow property, you can generate a text shadow directly with our [CSS Text Shadow Generator](#).

Here you see how black text with a 4 pixel #E05B81 colored shadow looks like.

```
.shadow{ text-shadow: 4px 4px 2px #E05B81
}
```

Border

The CSS property to change the border of an element to Hex E05B81 is called "border". The border property can be set on classes, ids or directly on the HTML element.

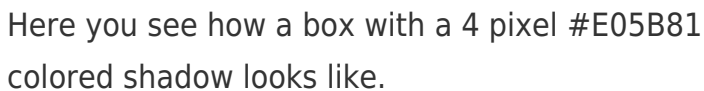
This example shows the color as border, it can be applied via the CSS property "border" or "border-color".

```
.border, #border, table{ border:4px solid
#E05B81 }
```

If only the border color should be changed use the property `border-color`.

```
.border{ border-color:#E05B81 }
```

If you want to add a box shadow in that color use:



Here you see how a box with a 4 pixel #E05B81 colored shadow looks like.

```
.boxshadow{ -moz-box-shadow:4px 4px 4px  
4px #E05B81; -webkit-box-shadow:4px 4px  
4px 4px #E05B81; box-shadow:4px 4px 4px  
4px #E05B81 }
```

Background

The CSS property to change the background color of an element to Hex E05B81 is called "background". The background property can be set on classes, ids or directly on the HTML element.

```
.background, #background, body{  
background:#E05B81 }
```

If only the background color should be changed can be used:

```
.background{ background-color:#E05B81 }
```

This example shows the color as background, it is applied via the CSS property "background".

To optimize and compress your CSS code, you can use our [online CSS compressor and optimizer](#) based on csstidy. If you want to create a linear or radial gradient as background or border, check our [CSS Gradient Generator](#).

Hey! You found this booklet interesting? Support Converting Colors with the new Membership Option!

The pro membership hides all ads, plus gives you double the colors in the color bucket, and more awesome pro features!

[Learn more, Memberships starting at \\$2.50/m!](#)

**Follow me
on Twitter!**

@ConvertingColor