

Converting Colors

Hex(E06385)

Have a look what the booklet for
Hex(E06385) contains.

Hex(E06385)	3
<i>Conversions</i>	4
<i>Details</i>	6
<i>Harmonies</i>	11
<i>Previews</i>	23
<i>Color Blindness Simulation</i>	26
<i>CSS Examples</i>	29

Color

Hex(E06385)

Conversions

Conversions Part 1

Format	Color
Hex	E06385
RGB	224, 99, 133
RGB Percent	88%, 39%, 52%
CMY	0.1216, 0.6118, 0.4784
CMYK	0.00, 0.56, 0.41, 0.12
HSL	344°, 67%, 63%
HSV	344°, 56%, 88%
XYZ	39.4359, 26.4644, 25.2199
YIQ	140.2510, 63.5860, 37.0740

Conversions

Conversions Part 2

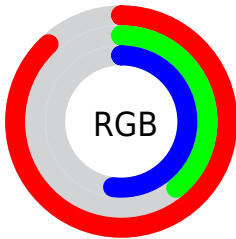
Format	Color
R _Y B	224, 99, 133
Decimal	14705541
CIE Lab	58.48, 51.91, 5.58
CIE LCh	58, 52.210, 6.135
Yxy	26.4644, 0.4328, 0.2904
Android (android.graphics.Color)	4292895621 (0xFFE06385)
YUV	140.2510, -3.5747, 73.4479
Hunter-Lab	51.4436, 46.8094, 6.9439

Details

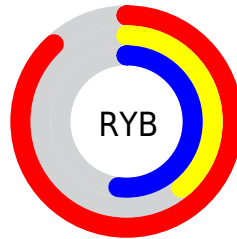
The Hex color **E06385** is a light color, and the websafe version is hex **FF6699**. A complement of this color would be **63E0BE**, and the grayscale version is **8C8C8C**.

A 20% lighter version of the original color is **FF9ABA**, and **A52B54** is the 20% darker color. If you saturate the color by 10%, you get **E04D75**, and if you desaturate by 10%, it is **E07995**.

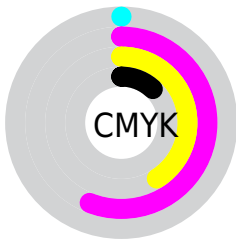
Distribution



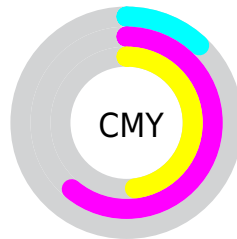
- Red (88%)
- Green (39%)
- Blue (52%)



- Red (88%)
- Yellow (39%)
- Blue (52%)



- Cyan (0%)
- Magenta (56%)
- Yellow (41%)
- Black (12%)



- Cyan (12%)
- Magenta (61%)
- Yellow (48%)

Brightness & Saturation Gradients

These gradients show how the Hex color E06385 changes by changing the brightness by 10 percent. The first figure shows a shift by +10% for each color and the second figure -10%.

Similar to the brightness gradients but the following saturation gradients show a change of the Hex color E06385 by changing the saturation by 10% instead.

 E06385

 E06385

FFFFFF

 C2486C

 FF9ABA

 A52B54

 FFB6D6

 88043D

 FFD2F2

 6B0027

 FFF0FF

 4F0013

 360002

 060000

 000000

 E06385

 E06385

 E04D75

 E07995

 E03664

 E090A6

 E02054

 E0A6B6

 E00944

 E0BDC6

 E0003D

 E0D3D7

 E0E9E7

 E0FFF7

 E0FFFF

Harmonies

Analogous

The Analogous color harmony consists of three colors that are next to each other on the color wheel.



CC6BB3



E06385



DB6C59

Triad

The Triadic color harmony groups three colors that are evenly spaced from another and form a triangle on the color wheel.



E06385



6D993E



009BE0

Complementary

The Complementary color scheme is a pair of colors which are on the opposite of each other on the color wheel.



E06385



63E0BE

Split Complementary

Split-complementary colors differ from the complementary color scheme. The scheme consists of three colors, the original color and two neighbors of the complement color.



00A2C1



E06385



1DA066

Square

The Square scheme is like the rectangle color scheme, but the four colors are evenly spaced on the color wheel.



E06385



9D8D2B



00A395



428FE8

Rectangle

The Rectangle color scheme consists of four colors that form a rectangle on the color wheel.



E06385



CD7741



00A395



009ED8

Sweetspot

The Sweet Spot groups the original color and five complimentary colors.



E06385



FFD4DF



BD63E0



80666D



000000



808080

Same Dimension

The Same Dimension uses a secret algorithm to generate beautiful new colors.



E06385



FF5483



E07E63



706568



B00030



30000D

Inverse Universe

The Inverse Universe completely reimagines the original color for something new.



E06385



FF5483



63C5E0



706568



B00030



30000D

Previews

White Background



This preview shows how the Hex color E06385 looks on a white background.

Color Contrast Check

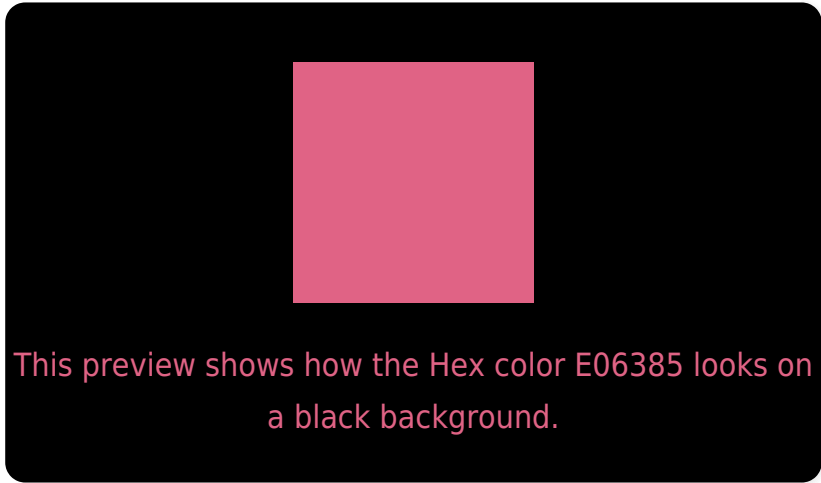
Large Text (above 18pt) WCAG AA ✓ Pass

Any Text WCAG AA ✗ Fail

Large Text (above 18pt) WCAG AAA ✗ Fail

Any Text WCAG AAA ✗ Fail

Black Background



Color Contrast Check

Large Text (above 18pt) WCAG AA ✓ Pass

Any Text WCAG AA ✓ Pass

Large Text (above 18pt) WCAG AAA ✓ Pass

Any Text WCAG AAA × Fail

If you want to check with other color combinations, try the [Color Contrast Checker](#).

Hex E06385 Background



This preview shows how black text looks on a background with the Hex color E06385.

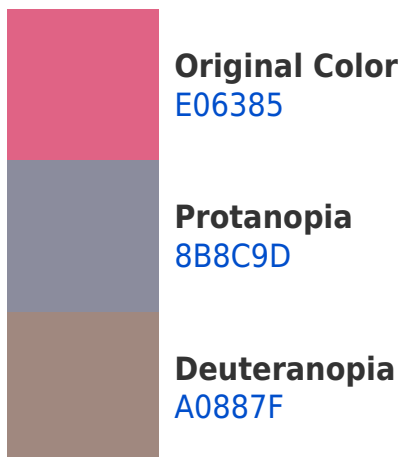


This preview shows how white text looks on a background with the Hex color E06385.

Color Blindness Simulation

Color vision deficiency is a very complex topic, and I could not describe the different causes any better than Wikipedia does, so if you want to learn more, you should check out their [article about color blindness](#).

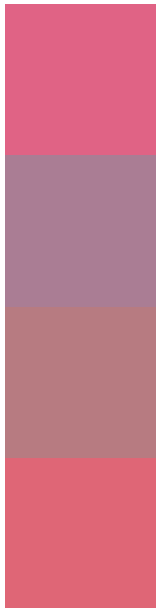
Dichromacy





Tritanopia
DE676E

Trichromacy



Original Color
E06385

Protanomaly
AA7D94

Deuteranomaly
B77B81

Tritanomaly
DF6676

Monochromacy



Original Color
E06385

Achromatopsia
8C8C8C

Achromatomaly
AB7D89

CSS Examples

Text

The CSS property to change the color of the text to Hex E06385 is called "color". The color property can be set on classes, ids or directly on the HTML element.

This example shows how text in the color #E06385 looks like.

```
.text, #text, p{  
    color:#E06385  
}
```

If you want to add a text shadow in that color use the text-shadow property, you can generate a text shadow directly with our [CSS Text Shadow Generator](#).

Here you see how black text with a 4 pixel #E06385 colored shadow looks like.

```
.shadow{ text-shadow: 4px 4px 2px #E06385
}
```

Border

The CSS property to change the border of an element to Hex E06385 is called "border". The border property can be set on classes, ids or directly on the HTML element.

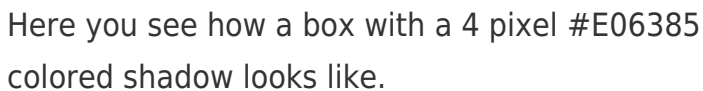
This example shows the color as border, it can be applied via the CSS property "border" or "border-color".

```
.border, #border, table{ border:4px solid
#E06385 }
```

If only the border color should be changed use the property `border-color`.

```
.border{ border-color:#E06385 }
```

If you want to add a box shadow in that color use:



Here you see how a box with a 4 pixel #E06385 colored shadow looks like.

```
.boxshadow{ -moz-box-shadow:4px 4px 4px  
4px #E06385; -webkit-box-shadow:4px 4px  
4px 4px #E06385; box-shadow:4px 4px 4px  
4px #E06385 }
```

Background

The CSS property to change the background color of an element to Hex E06385 is called "background". The background property can be set on classes, ids or directly on the HTML element.

```
.background, #background, body{  
background:#E06385 }
```

If only the background color should be changed can be used:

```
.background{ background-color:#E06385 }
```

This example shows the color as background, it is applied via the CSS property "background".

To optimize and compress your CSS code, you can use our [online CSS compressor and optimizer](#) based on csstidy. If you want to create a linear or radial gradient as background or border, check our [CSS Gradient Generator](#).

Hey! You found this booklet interesting? Support Converting Colors with the new Membership Option!

The pro membership hides all ads, plus gives you double the colors in the color bucket, and more awesome pro features!

[Learn more, Memberships starting at \\$2.50/m!](#)

**Follow me
on Twitter!**

@ConvertingColor