

Converting Colors

Hex(E07287)

Have a look what the booklet for
Hex(E07287) contains.

Hex(E07287)	3
<i>Conversions</i>	4
<i>Details</i>	6
<i>Harmonies</i>	11
<i>Previews</i>	23
<i>Color Blindness Simulation</i>	26
<i>CSS Examples</i>	29

Color

Hex(E07287)

Conversions

Conversions Part 1

Format	Color
Hex	E07287
RGB	224, 114, 135
RGB Percent	88%, 45%, 53%
CMY	0.1216, 0.5529, 0.4706
CMYK	0.00, 0.49, 0.40, 0.12
HSL	349°, 64%, 66%
HSV	349°, 49%, 88%
XYZ	41.1310, 29.6312, 26.4732
YIQ	149.2840, 58.8190, 29.8510

Conversions

Conversions Part 2

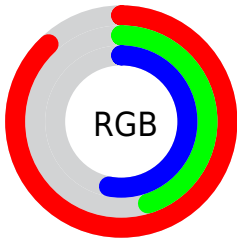
Format	Color
R_{YB}	224, 114, 135
Decimal	14709383
CIE _{Lab}	61.33, 44.85, 8.51
CIE _{LCh}	61, 45.654, 10.740
Yxy	29.6312, 0.4230, 0.3047
Android (android.graphics.Color)	4292899463 (0xFFE07287)
YUV	149.2840, -7.0420, 65.5259
Hunter-Lab	54.4345, 39.6149, 9.2696

Details

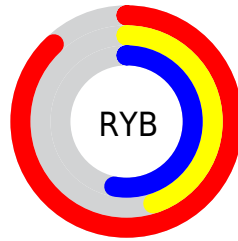
The Hex color **E07287** is a light color, and the websafe version is hex **CC6666**. A complement of this color would be **72E0CB**, and the grayscale version is **959595**.

A 20% lighter version of the original color is **FFA8BC**, and **A53D56** is the 20% darker color. If you saturate the color by 10%, you get **E05C75**, and if you desaturate by 10%, it is **E08899**.

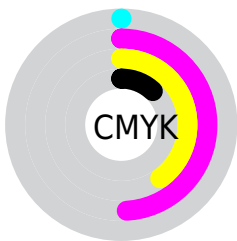
Distribution



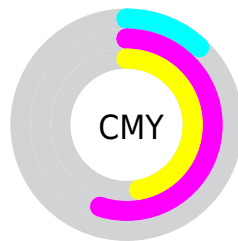
- Red (88%)
- Green (45%)
- Blue (53%)



- Red (88%)
- Yellow (45%)
- Blue (53%)



- Cyan (0%)
- Magenta (49%)
- Yellow (40%)
- Black (12%)



- Cyan (12%)
- Magenta (55%)
- Yellow (47%)

Brightness & Saturation Gradients

These gradients show how the Hex color E07287 changes by changing the brightness by 10 percent. The first figure shows a shift by +10% for each color and the second figure -10%.

Similar to the brightness gradients but the following saturation gradients show a change of the Hex color E07287 by changing the saturation by 10% instead.

 E07287

 E07287

FFFFFF

 C2586E

 FFA8BC

 A53D56

 FFC4D8

 89223E

 FFE1F4

 6D0029

FFFEFF

 510015

 380001

 120000

 000000

 E07287

 E07287

 E05C75

 E08899

 E04563

 E09FAB

 E02F51

 E0B5BD

 E0183F

 E0CCCF

 E0022C

 E0E2E2

 E0002B

 E0F8F4

 E0FFFF

Harmonies

Analogous

The Analogous color harmony consists of three colors that are next to each other on the color wheel.



D176B0



E07287



D97A61

Triad

The Triadic color harmony groups three colors that are evenly spaced from another and form a triangle on the color wheel.



E07287



72A155



00A0E0

Complementary

The Complementary color scheme is a pair of colors which are on the opposite of each other on the color wheel.



E07287



72E0CB

Split Complementary

Split-complementary colors differ from the complementary color scheme. The scheme consists of three colors, the original color and two neighbors of the complement color.



00A7C8



E07287



34A778

Square

The Square scheme is like the rectangle color scheme, but the four colors are evenly spaced on the color wheel.



E07287



9E9642



00A9A2



6A93E3

Rectangle

The Rectangle color scheme consists of four colors that form a rectangle on the color wheel.



E07287



CB844E



00A9A2



00A2DA

Sweetspot

The Sweet Spot groups the original color and five complimentary colors.



E07287



FFD9E0



CA72E0



80696D



000000



808080

Same Dimension

The Same Dimension uses a secret algorithm to generate beautiful new colors.



E07287



FF6985



E09372



706567



B00022



300009

Inverse Universe

The Inverse Universe completely reimagines the original color for something new.



E07287



FF6985



72BFE0



706567



B00022



300009

Previews

White Background



This preview shows how the Hex color E07287 looks on a white background.

Color Contrast Check

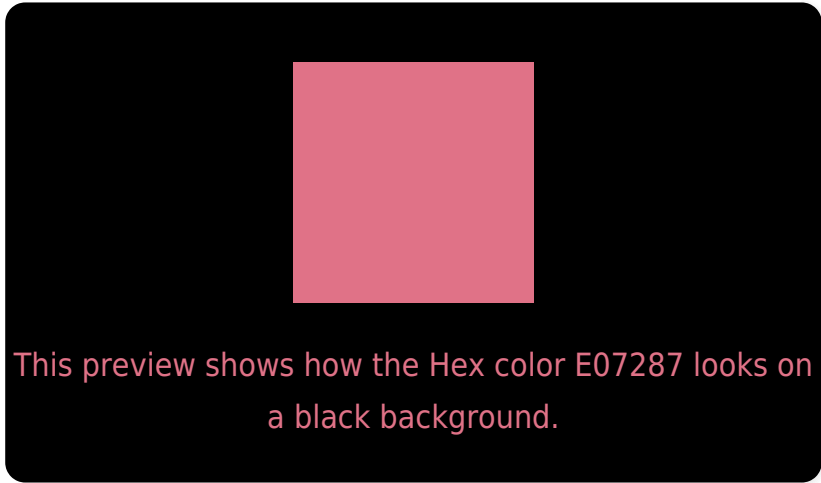
Large Text (above 18pt) WCAG AA ✓ Pass

Any Text WCAG AA ✗ Fail

Large Text (above 18pt) WCAG AAA ✗ Fail

Any Text WCAG AAA ✗ Fail

Black Background



Color Contrast Check

Large Text (above 18pt) WCAG AA ✓ Pass

Any Text WCAG AA ✓ Pass

Large Text (above 18pt) WCAG AAA ✓ Pass

Any Text WCAG AAA × Fail

If you want to check with other color combinations, try the [Color Contrast Checker](#).

Hex E07287 Background



This preview shows how black text looks on a background with the Hex color E07287.

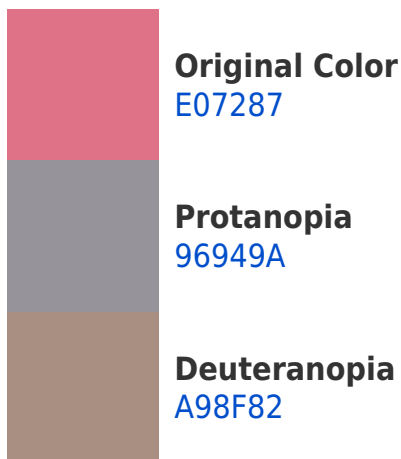



This preview shows how white text looks on a background with the Hex color E07287.

Color Blindness Simulation

Color vision deficiency is a very complex topic, and I could not describe the different causes any better than Wikipedia does, so if you want to learn more, you should check out their [article about color blindness](#).

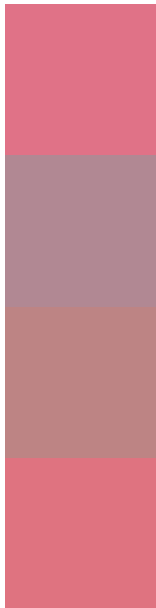
Dichromacy





Tritanopia
DF747C

Trichromacy



Original Color
E07287

Protanomaly
B18893

Deuteranomaly
BD8484

Tritanomaly
DF7380

Monochromacy



Original Color
E07287

Achromatopsia
959595

Achromatomaly
B08890

CSS Examples

Text

The CSS property to change the color of the text to Hex E07287 is called "color". The color property can be set on classes, ids or directly on the HTML element.

This example shows how text in the color #E07287 looks like.

```
.text, #text, p{  
    color:#E07287  
}
```

If you want to add a text shadow in that color use the text-shadow property, you can generate a text shadow directly with our [CSS Text Shadow Generator](#).

Here you see how black text with a 4 pixel #E07287 colored shadow looks like.

```
.shadow{ text-shadow: 4px 4px 2px #E07287
}
```

Border

The CSS property to change the border of an element to Hex E07287 is called "border". The border property can be set on classes, ids or directly on the HTML element.

This example shows the color as border, it can be applied via the CSS property "border" or "border-color".

```
.border, #border, table{ border:4px solid
#E07287 }
```

If only the border color should be changed use the property `border-color`.

```
.border{ border-color:#E07287 }
```

If you want to add a box shadow in that color use:

Here you see how a box with a 4 pixel #E07287 colored shadow looks like.

```
.boxshadow{ -moz-box-shadow:4px 4px 4px  
4px #E07287; -webkit-box-shadow:4px 4px  
4px 4px #E07287; box-shadow:4px 4px 4px  
4px #E07287 }
```

Background

The CSS property to change the background color of an element to Hex E07287 is called "background". The background property can be set on classes, ids or directly on the HTML element.

```
.background, #background, body{  
background:#E07287 }
```

If only the background color should be changed can be used:

```
.background{ background-color:#E07287 }
```

This example shows the color as background, it is applied via the CSS property "background".

To optimize and compress your CSS code, you can use our [online CSS compressor and optimizer](#) based on csstidy. If you want to create a linear or radial gradient as background or border, check our [CSS Gradient Generator](#).

Hey! You found this booklet interesting? Support Converting Colors with the new Membership Option!

The pro membership hides all ads, plus gives you double the colors in the color bucket, and more awesome pro features!

[Learn more, Memberships starting at \\$2.50/m!](#)

**Follow me
on Twitter!**

@ConvertingColor