

# Converting Colors

Hex(E09BAD)

Have a look what the booklet for  
Hex(E09BAD) contains.

<b>Hex(E09BAD)</b> .....	3
<b><i>Conversions</i></b> .....	4
<b><i>Details</i></b> .....	6
<b><i>Harmonies</i></b> .....	11
<b><i>Previews</i></b> .....	23
<b><i>Color Blindness Simulation</i></b> .....	26
<b><i>CSS Examples</i></b> .....	29

# **Color**

**Hex(E09BAD)**

# Conversions

## Conversions Part 1

Format	Color
Hex	E09BAD
RGB	224, 155, 173
RGB Percent	88%, 61%, 68%
CMY	0.1216, 0.3922, 0.3216
CMYK	0.00, 0.31, 0.23, 0.12
HSL	344°, 53%, 74%
HSV	344°, 31%, 88%
XYZ	50.0046, 42.3071, 45.0657
YIQ	177.6830, 35.3460, 20.2260

# Conversions

## Conversions Part 2

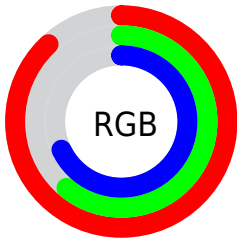
Format	Color
<a href="#">RYB</a>	<a href="#">224, 155, 173</a>
Decimal	<a href="#">14719917</a>
CIELab	<a href="#">71.08, 28.29, 1.09</a>
CIELCh	<a href="#">71, 28.307, 2.215</a>
Yxy	<a href="#">42.3071, 0.3640, 0.3080</a>
Android (android.graphics.Color)	<a href="#">4292909997 (0xFFE09BAD)</a>
YUV	<a href="#">177.6830, -2.3087, 40.6200</a>
Hunter-Lab	<a href="#">65.0439, 23.4009, 4.4516</a>

# Details

The Hex color **E09BAD** is a light color, and the websafe version is hex **CC9999**. A complement of this color would be **9BE0CE**, and the grayscale version is **B2B2B2**.

A 20% lighter version of the original color is **FFD2E4**, and **A76779** is the 20% darker color. If you saturate the color by 10%, you get **E0859C**, and if you desaturate by 10%, it is **E0B1BE**.

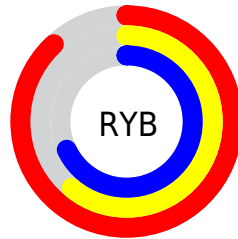
# Distribution



Red (88%)

Green (61%)

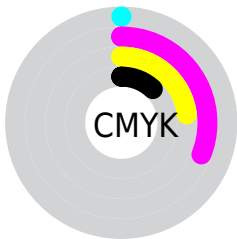
Blue (68%)



Red (88%)

Yellow (61%)

Blue (68%)

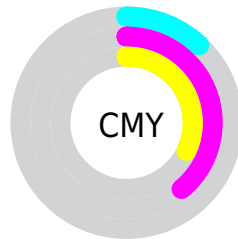


Cyan (0%)

Magenta (31%)

Yellow (23%)

Black (12%)



Cyan (12%)

Magenta (39%)

Yellow (32%)

# Brightness & Saturation Gradients

These gradients show how the Hex color E09BAD changes by changing the brightness by 10 percent. The first figure shows a shift by +10% for each color and the second figure -10%.

Similar to the brightness gradients but the following saturation gradients show a change of the Hex color E09BAD by changing the saturation by 10% instead.



 E09BAD

 E09BAD

FFFFFF

 C38192

 FFD2E4

 A76779

 FFEFFF

 8C4E60

 723648

 581F32

 3F061D

 2B0003

 000000

 E09BAD

 E09BAD

 E0859C

 E0B1BE

 E06E8C

 E0C8CE

 E0587B

 E0DEDF

 E0416B

 E0F5EF

 E02B5A

 E0FFFF

 E0154A

 E0003A

# Harmonies

## Analogous

The Analogous color harmony consists of three colors that are next to each other on the color wheel.



D19FC6



E09BAD



E19D94

# Triad

The Triadic color harmony groups three colors that are evenly spaced from another and form a triangle on the color wheel.



E09BAD



A3B582



6EB7DB

# Complementary

The Complementary color scheme is a pair of colors which are on the opposite of each other on the color wheel.



E09BAD



9BE0CE

# Split Complementary

Split-complementary colors differ from the complementary color scheme. The scheme consists of three colors, the original color and two neighbors of the complement color.



5EBBC9



E09BAD



85BA95

# Square

The Square scheme is like the rectangle color scheme, but the four colors are evenly spaced on the color wheel.



E09BAD



BFAD7A



6ABCAF



90B0E1

# Rectangle

The Rectangle color scheme consists of four colors that form a rectangle on the color wheel.



E09BAD



DAA286



6ABCAF



66B9D6



# Sweetspot

The Sweet Spot groups the original color and five complimentary colors.



E09BAD



FFE8EE



CE9BE0



807175



000000



808080



# Same Dimension

The Same Dimension uses a secret algorithm to generate beautiful new colors.



E09BAD



FFA1B9



E0AB9B



706568



B0002E



30000D



# Inverse Universe

The Inverse Universe completely reimagines the original color for something new.



E09BAD



FFA1B9



9BD0E0



706568



B0002E



30000D



# Previews

## White Background



This preview shows how the Hex color E09BAD looks on a white background.

## Color Contrast Check

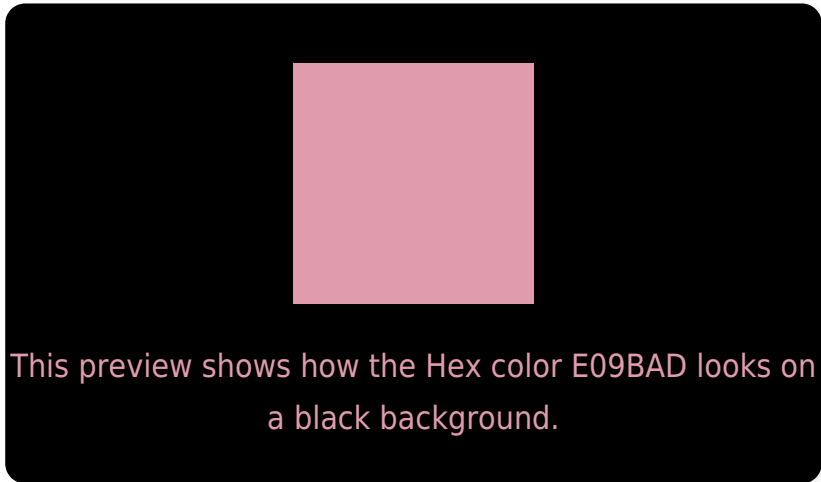
Large Text (above 18pt) WCAG AA × Fail

Any Text WCAG AA × Fail

Large Text (above 18pt) WCAG AAA × Fail

Any Text WCAG AAA × Fail

# Black Background



## Color Contrast Check

Large Text (above 18pt) WCAG AA ✓ Pass

Any Text WCAG AA ✓ Pass

Large Text (above 18pt) WCAG AAA ✓ Pass

Any Text WCAG AAA ✓ Pass

If you want to check with other color combinations, try the [Color Contrast Checker](#).



## Hex E09BAD Background



This preview shows how black text looks on a background with the Hex color E09BAD.

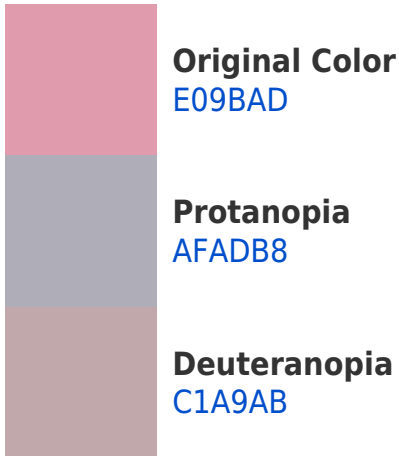


This preview shows how white text looks on a background with the Hex color E09BAD.

# Color Blindness Simulation

Color vision deficiency is a very complex topic, and I could not describe the different causes any better than Wikipedia does, so if you want to learn more, you should check out their [article about color blindness](#).

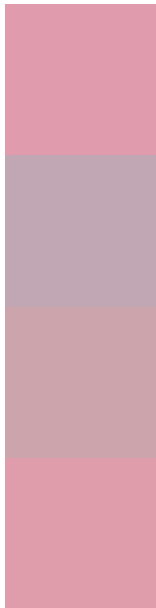
## Dichromacy





**Tritanopia**  
DF9CA8

# Trichromacy



**Original Color**  
E09BAD

**Protanomaly**  
C1A6B4

**Deuteranomaly**  
CCA4AC

**Tritanomaly**  
DF9CAA

# Monochromacy



**Original Color**  
E09BAD

**Achromatopsia**  
B2B2B2

**Achromatomaly**  
C3AAB0

# CSS Examples

## Text

The CSS property to change the color of the text to Hex E09BAD is called "color". The color property can be set on classes, ids or directly on the HTML element.

This example shows how text in the color #E09BAD looks like.

```
.text, #text, p{  
    color:#E09BAD  
}
```

If you want to add a text shadow in that color use the text-shadow property, you can generate a text shadow directly with our [CSS Text Shadow Generator](#).

Here you see how black text with a 4 pixel #E09BAD colored shadow looks like.

```
.shadow{ text-shadow: 4px 4px 2px #E09BAD
}
```

## Border

The CSS property to change the border of an element to Hex E09BAD is called "border". The border property can be set on classes, ids or directly on the HTML element.

This example shows the color as border, it can be applied via the CSS property "border" or "border-color".

```
.border, #border, table{ border:4px solid
#E09BAD }
```

If only the border color should be changed use the property `border-color`.

```
.border{ border-color:#E09BAD }
```

If you want to add a box shadow in that color use:

Here you see how a box with a 4 pixel #E09BAD colored shadow looks like.

```
.boxshadow{ -moz-box-shadow:4px 4px 4px  
4px #E09BAD; -webkit-box-shadow:4px 4px  
4px 4px #E09BAD; box-shadow:4px 4px 4px  
4px #E09BAD }
```

# Background

The CSS property to change the background color of an element to Hex E09BAD is called "background". The background property can be set on classes, ids or directly on the HTML element.

```
.background, #background, body{  
background:#E09BAD }
```

If only the background color should be changed can be used:

```
.background{ background-color:#E09BAD }
```

This example shows the color as background, it is applied via the CSS property "background".

To optimize and compress your CSS code, you can use our [online CSS compressor and optimizer](#) based on csstidy. If you want to create a linear or radial gradient as background or border, check our [CSS Gradient Generator](#).



Hey! You found this booklet interesting? Support Converting Colors with the new Membership Option!

The pro membership hides all ads, plus gives you double the colors in the color bucket, and more awesome pro features!

**[Learn more, Memberships starting at \\$2.50/m!](#)**

**Follow me  
on Twitter!**

@ConvertingColor