

Converting Colors

Hex(E0A2B4)

Have a look what the booklet for
Hex(E0A2B4) contains.

Hex(E0A2B4)	3
<i>Conversions</i>	4
<i>Details</i>	6
<i>Harmonies</i>	11
<i>Previews</i>	23
<i>Color Blindness Simulation</i>	26
<i>CSS Examples</i>	29

Color

Hex(E0A2B4)

Conversions

Conversions Part 1

Format	Color
Hex	E0A2B4
RGB	224, 162, 180
RGB Percent	88%, 64%, 71%
CMY	0.1216, 0.3647, 0.2941
CMYK	0.00, 0.28, 0.20, 0.12
HSL	343°, 50%, 76%
HSV	343°, 28%, 88%
XYZ	51.8990, 44.9832, 49.1273
YIQ	182.5900, 31.1740, 18.7420

Conversions

Conversions Part 2

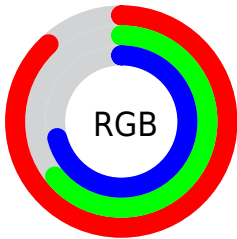
Format	Color
RYB	224, 162, 180
Decimal	14721716
CIELab	72.88, 25.57, -0.15
CIELCh	73, 25.567, 359.654
Yxy	44.9832, 0.3554, 0.3081
Android (android.graphics.Color)	4292911796 (0xFFE0A2B4)
YUV	182.5900, -1.2769, 36.3166
Hunter-Lab	67.0695, 20.7532, 3.5198

Details

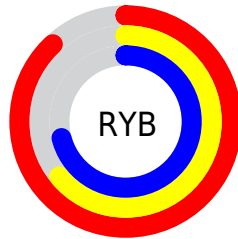
The Hex color **E0A2B4** is a light color, and the websafe version is hex **CC9999**. A complement of this color would be **A2E0CE**, and the grayscale version is **B7B7B7**.

A 20% lighter version of the original color is **FFD9EC**, and **A86E7F** is the 20% darker color. If you saturate the color by 10%, you get **E08CA4**, and if you desaturate by 10%, it is **E0B8C4**.

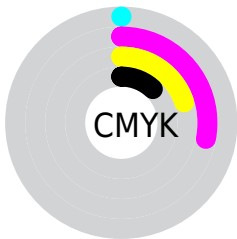
Distribution



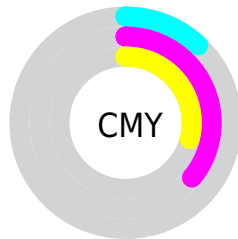
- Red (88%)
- Green (64%)
- Blue (71%)



- Red (88%)
- Yellow (64%)
- Blue (71%)



- Cyan (0%)
- Magenta (28%)
- Yellow (20%)
- Black (12%)



- Cyan (12%)
- Magenta (36%)
- Yellow (29%)

Brightness & Saturation Gradients

These gradients show how the Hex color E0A2B4 changes by changing the brightness by 10 percent. The first figure shows a shift by +10% for each color and the second figure -10%.

Similar to the brightness gradients but the following saturation gradients show a change of the Hex color E0A2B4 by changing the saturation by 10% instead.

 E0A2B4

 E0A2B4

FFFFFF

 C48799

 FFD9EC

 A86E7F

 FFF6FF

 8D5566

 723D4E

 592638

 400F22

 2A000C

 000000

 E0A2B4

 E0A2B4

 E08CA4

 E0B8C4

 E07594

 E0CFD4

 E05F84

 E0E5E4

 E04874

 E0FCF4

 E03265

 E0FFFF

 E01C55

 E00545

 E00041

Harmonies

Analogous

The Analogous color harmony consists of three colors that are next to each other on the color wheel.



D1A6CB



E0A2B4



E2A49D

Triad

The Triadic color harmony groups three colors that are evenly spaced from another and form a triangle on the color wheel.



E0A2B4



ABB88A



7ABCDB

Complementary

The Complementary color scheme is a pair of colors which are on the opposite of each other on the color wheel.



E0A2B4



A2E0CE

Split Complementary

Split-complementary colors differ from the complementary color scheme. The scheme consists of three colors, the original color and two neighbors of the complement color.



6EBFC9



E0A2B4



90BE9B

Square

The Square scheme is like the rectangle color scheme, but the four colors are evenly spaced on the color wheel.



E0A2B4



C4B184



79C0B2



96B5E1

Rectangle

The Rectangle color scheme consists of four colors that form a rectangle on the color wheel.



E0A2B4



DCA790



79C0B2



73BDD6

Sweetspot

The Sweet Spot groups the original color and five complimentary colors.



E0A2B4



FFEBF1



CDA2E0



807376



000000



808080

Same Dimension

The Same Dimension uses a secret algorithm to generate beautiful new colors.



E0A2B4



FFABC3



E0AEA2



706568



B00033



30000E

Inverse Universe

The Inverse Universe completely reimagines the original color for something new.



E0A2B4



FFABC3



A2D4E0



706568



B00033



30000E

Previews

White Background



This preview shows how the Hex color E0A2B4 looks on a white background.

Color Contrast Check

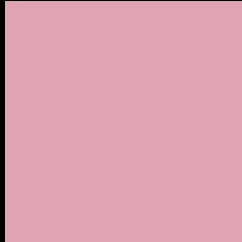
Large Text (above 18pt) WCAG AA × Fail

Any Text WCAG AA × Fail

Large Text (above 18pt) WCAG AAA × Fail

Any Text WCAG AAA × Fail

Black Background



This preview shows how the Hex color E0A2B4 looks on a black background.

Color Contrast Check

Large Text (above 18pt) WCAG AA ✓ Pass

Any Text WCAG AA ✓ Pass

Large Text (above 18pt) WCAG AAA ✓ Pass

Any Text WCAG AAA ✓ Pass

If you want to check with other color combinations, try the [Color Contrast Checker](#).

Hex E0A2B4 Background



This preview shows how black text looks on a background with the Hex color E0A2B4.

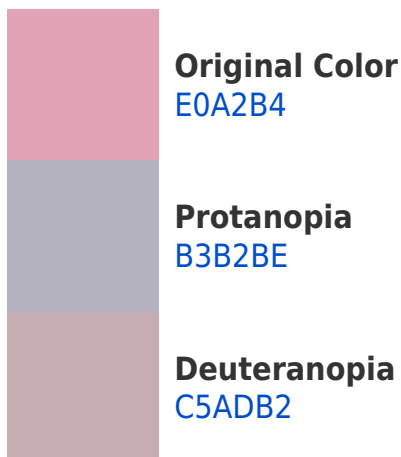


This preview shows how white text looks on a background with the Hex color E0A2B4.

Color Blindness Simulation

Color vision deficiency is a very complex topic, and I could not describe the different causes any better than Wikipedia does, so if you want to learn more, you should check out their [article about color blindness](#).

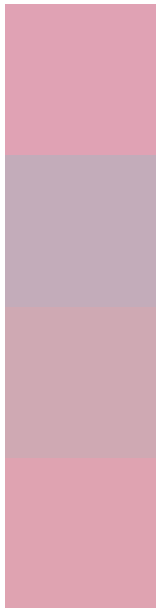
Dichromacy





Tritanopia
DFA3AF

Trichromacy



Original Color
E0A2B4

Protanomaly
C3ACBA

Deuteranomaly
CFA9B3

Tritanomaly
DFA3B1

Monochromacy



Original Color
E0A2B4

Achromatopsia
B7B7B7

Achromatomaly
C6AFB6

CSS Examples

Text

The CSS property to change the color of the text to Hex E0A2B4 is called "color". The color property can be set on classes, ids or directly on the HTML element.

This example shows how text in the color #E0A2B4 looks like.

```
.text, #text, p{  
    color:#E0A2B4  
}
```

If you want to add a text shadow in that color use the text-shadow property, you can generate a text shadow directly with our [CSS Text Shadow Generator](#).

Here you see how black text with a 4 pixel #E0A2B4 colored shadow looks like.

```
.shadow{ text-shadow: 4px 4px 2px #E0A2B4
}
```

Border

The CSS property to change the border of an element to Hex E0A2B4 is called "border". The border property can be set on classes, ids or directly on the HTML element.

This example shows the color as border, it can be applied via the CSS property "border" or "border-color".

```
.border, #border, table{ border:4px solid
#E0A2B4 }
```

If only the border color should be changed use the property `border-color`.

```
.border{ border-color:#E0A2B4 }
```

If you want to add a box shadow in that color use:

Here you see how a box with a 4 pixel #E0A2B4 colored shadow looks like.

```
.boxshadow{ -moz-box-shadow:4px 4px 4px  
4px #E0A2B4; -webkit-box-shadow:4px 4px  
4px 4px #E0A2B4; box-shadow:4px 4px 4px  
4px #E0A2B4 }
```

Background

The CSS property to change the background color of an element to Hex E0A2B4 is called "background". The background property can be set on classes, ids or directly on the HTML element.

```
.background, #background, body{  
background:#E0A2B4 }
```

If only the background color should be changed can be used:

```
.background{ background-color:#E0A2B4 }
```

This example shows the color as background, it is applied via the CSS property "background".

To optimize and compress your CSS code, you can use our [online CSS compressor and optimizer](#) based on csstidy. If you want to create a linear or radial gradient as background or border, check our [CSS Gradient Generator](#).

Hey! You found this booklet interesting? Support Converting Colors with the new Membership Option!

The pro membership hides all ads, plus gives you double the colors in the color bucket, and more awesome pro features!

[Learn more, Memberships starting at \\$2.50/m!](#)

**Follow me
on Twitter!**

@ConvertingColor