

Converting Colors

Hex(E0ABB9)

Have a look what the booklet for
Hex(E0ABB9) contains.

Hex(E0ABB9)	3
<i>Conversions</i>	4
<i>Details</i>	6
<i>Harmonies</i>	11
<i>Previews</i>	23
<i>Color Blindness Simulation</i>	26
<i>CSS Examples</i>	29

Color

Hex(E0ABB9)

Conversions

Conversions Part 1

Format	Color
Hex	E0ABB9
RGB	224, 171, 185
RGB Percent	88%, 67%, 73%
CMY	0.1216, 0.3294, 0.2745
CMYK	0.00, 0.24, 0.17, 0.12
HSL	344°, 46%, 77%
HSV	344°, 24%, 88%
XYZ	54.0603, 48.4759, 52.4064
YIQ	188.4430, 27.0940, 15.5900

Conversions

Conversions Part 2

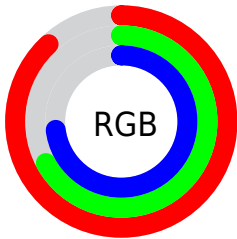
Format	Color
RYB	224, 171, 185
Decimal	14724025
CIELab	75.12, 21.49, 0.37
CIELCh	75, 21.497, 0.996
Yxy	48.4759, 0.3489, 0.3129
Android (android.graphics.Color)	4292914105 (0xFFE0ABB9)
YUV	188.4430, -1.6974, 31.1835
Hunter-Lab	69.6246, 16.7540, 4.1097

Details

The Hex color **E0ABB9** is a light color, and the websafe version is hex **CC9999**. A complement of this color would be **ABE0D2**, and the grayscale version is **BCBCBC**.

A 20% lighter version of the original color is **FFE3F1**, and **A87684** is the 20% darker color. If you saturate the color by 10%, you get **E095A9**, and if you desaturate by 10%, it is **E0C1C9**.

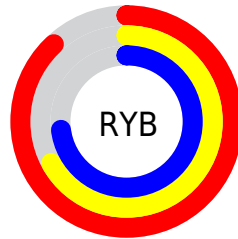
Distribution



Red (88%)

Green (67%)

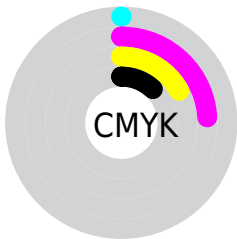
Blue (73%)



Red (88%)

Yellow (67%)

Blue (73%)

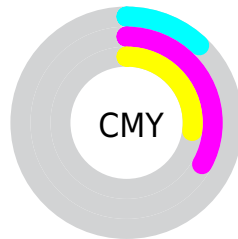


Cyan (0%)

Magenta (24%)

Yellow (17%)

Black (12%)



Cyan (12%)

Magenta (33%)

Yellow (27%)

Brightness & Saturation Gradients

These gradients show how the Hex color E0ABB9 changes by changing the brightness by 10 percent. The first figure shows a shift by +10% for each color and the second figure -10%.

Similar to the brightness gradients but the following saturation gradients show a change of the Hex color E0ABB9 by changing the saturation by 10% instead.

 E0ABB9

 E0ABB9

FFFFFF

 C4909E

 FFE3F1

 A87684


 8D5D6B

 734553

 5A2E3C

 411826

 2A0111

 010000

 000000

 E0ABB9

 E0ABB9

 E095A9

 E0C1C9

 E07E98

 E0D8DA

 E06888

 E0EEEE

 E05177

 E0FFFB

 E03B67

 E0FFFF

 E02556

 E00E46

 E0003B

Harmonies

Analogous

The Analogous color harmony consists of three colors that are next to each other on the color wheel.



D3AECC



E0ABB9



E1ACA5

Triad

The Triadic color harmony groups three colors that are evenly spaced from another and form a triangle on the color wheel.



E0ABB9



B2BE97



8CC0DB

Complementary

The Complementary color scheme is a pair of colors which are on the opposite of each other on the color wheel.



E0ABB9



ABE0D2

Split Complementary

Split-complementary colors differ from the complementary color scheme. The scheme consists of three colors, the original color and two neighbors of the complement color.



82C4CD



E0ABB9



9BC2A5

Square

The Square scheme is like the rectangle color scheme, but the four colors are evenly spaced on the color wheel.



E0ABB9



C8B892



89C4B9



A3BAE0

Rectangle

The Rectangle color scheme consists of four colors that form a rectangle on the color wheel.



E0ABB9



DDAF9B



89C4B9



87C2D7

Sweetspot

The Sweet Spot groups the original color and five complimentary colors.



E0ABB9



FFEDF2



D2ABE0



807578



000000



808080

Same Dimension

The Same Dimension uses a secret algorithm to generate beautiful new colors.



E0ABB9



FFB8CA



E0B7AB



706568



B0002E



30000D

Inverse Universe

The Inverse Universe completely reimagines the original color for something new.



E0ABB9



FFB8CA



ABD4E0



706568



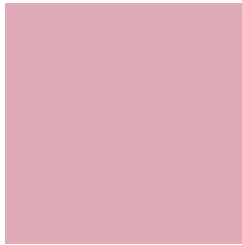
B0002E



30000D

Previews

White Background



This preview shows how the Hex color E0ABB9 looks on a white background.

Color Contrast Check

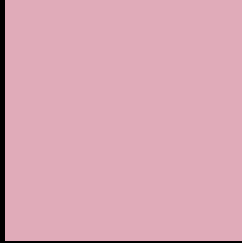
Large Text (above 18pt) WCAG AA × Fail

Any Text WCAG AA × Fail

Large Text (above 18pt) WCAG AAA × Fail

Any Text WCAG AAA × Fail

Black Background



This preview shows how the Hex color E0ABB9 looks on a black background.

Color Contrast Check

Large Text (above 18pt) WCAG AA ✓ Pass

Any Text WCAG AA ✓ Pass

Large Text (above 18pt) WCAG AAA ✓ Pass

Any Text WCAG AAA ✓ Pass

If you want to check with other color combinations, try the [Color Contrast Checker](#).

Hex E0ABB9 Background



This preview shows how black text looks on a background with the Hex color E0ABB9.

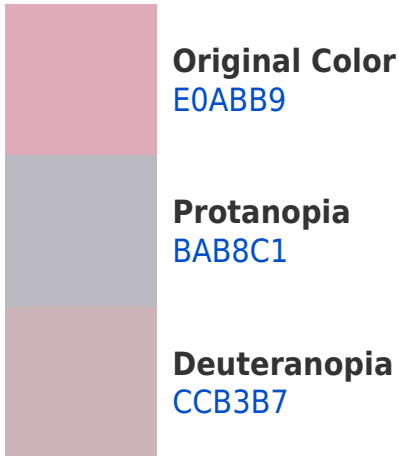


This preview shows how white text looks on a background with the Hex color E0ABB9.

Color Blindness Simulation

Color vision deficiency is a very complex topic, and I could not describe the different causes any better than Wikipedia does, so if you want to learn more, you should check out their [article about color blindness](#).

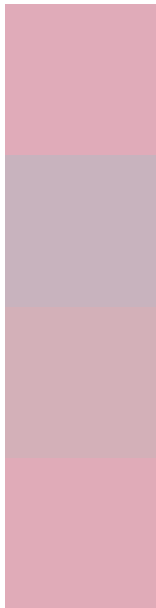
Dichromacy





Tritanopia
E0ABB8

Trichromacy



Original Color
E0ABB9

Protanomaly
C8B3BE

Deuteranomaly
D3B0B8

Tritanomaly
E0ABB8

Monochromacy



Original Color
E0ABB9

Achromatopsia
BCBCBC

Achromatomaly
C9B6BB

CSS Examples

Text

The CSS property to change the color of the text to Hex E0ABB9 is called "color". The color property can be set on classes, ids or directly on the HTML element.

This example shows how text in the color #E0ABB9 looks like.

```
.text, #text, p{  
    color:#E0ABB9  
}
```

If you want to add a text shadow in that color use the text-shadow property, you can generate a text shadow directly with our [CSS Text Shadow Generator](#).

Here you see how black text with a 4 pixel #E0ABB9 colored shadow looks like.

```
.shadow{ text-shadow: 4px 4px 2px #E0ABB9
}
```

Border

The CSS property to change the border of an element to Hex E0ABB9 is called "border". The border property can be set on classes, ids or directly on the HTML element.

This example shows the color as border, it can be applied via the CSS property "border" or "border-color".

```
.border, #border, table{ border:4px solid
#E0ABB9 }
```

If only the border color should be changed use the property `border-color`.

```
.border{ border-color:#E0ABB9 }
```

If you want to add a box shadow in that color use:

Here you see how a box with a 4 pixel #E0ABB9 colored shadow looks like.

```
.boxshadow{ -moz-box-shadow:4px 4px 4px  
4px #E0ABB9; -webkit-box-shadow:4px 4px  
4px 4px #E0ABB9; box-shadow:4px 4px 4px  
4px #E0ABB9 }
```

Background

The CSS property to change the background color of an element to Hex E0ABB9 is called "background". The background property can be set on classes, ids or directly on the HTML element.

```
.background, #background, body{  
background:#E0ABB9 }
```

If only the background color should be changed can be used:

```
.background{ background-color:#E0ABB9 }
```

This example shows the color as background, it is applied via the CSS property "background".

To optimize and compress your CSS code, you can use our [online CSS compressor and optimizer](#) based on csstidy. If you want to create a linear or radial gradient as background or border, check our [CSS Gradient Generator](#).

Hey! You found this booklet interesting? Support Converting Colors with the new Membership Option!

The pro membership hides all ads, plus gives you double the colors in the color bucket, and more awesome pro features!

[Learn more, Memberships starting at \\$2.50/m!](#)

**Follow me
on Twitter!**

@ConvertingColor