

# Converting Colors

Hex(E0B28A)

Have a look what the booklet for  
Hex(E0B28A) contains.

<b>Hex(E0B28A)</b> .....	3
<b><i>Conversions</i></b> .....	4
<b><i>Details</i></b> .....	6
<b><i>Harmonies</i></b> .....	11
<b><i>Previews</i></b> .....	23
<b><i>Color Blindness Simulation</i></b> .....	26
<b><i>CSS Examples</i></b> .....	29

**Color**

**Hex(E0B28A)**

# Conversions

## Conversions Part 1

Format	Color
Hex	E0B28A
RGB	224, 178, 138
RGB Percent	88%, 70%, 54%
CMY	0.1216, 0.3020, 0.4588
CMYK	0.00, 0.21, 0.38, 0.12
HSL	28°, 58%, 71%
HSV	28°, 38%, 88%
XYZ	51.2483, 49.5231, 30.9026
YIQ	187.1940, 40.2560, -2.6880

# Conversions

## Conversions Part 2

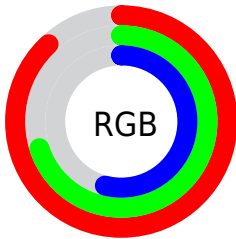
<b>Format</b>	<b>Color</b>
<a href="#">RYB</a>	<a href="#">224, 213, 138</a>
Decimal	<a href="#">14725770</a>
CIELab	<a href="#">75.78, 11.37, 26.80</a>
CIELCh	<a href="#">76, 29.113, 67.003</a>
Yxy	<a href="#">49.5231, 0.3892, 0.3761</a>
Android (android.graphics.Color)	<a href="#">4292915850 (0xFFE0B28A)</a>
YUV	<a href="#">187.1940, -24.2526, 32.2789</a>
Hunter-Lab	<a href="#">70.3726, 6.8391, 23.2249</a>

# Details

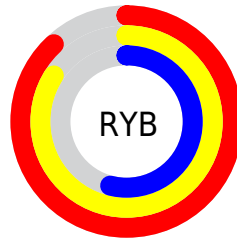
The Hex color **E0B28A** is a light color, and the websafe version is hex **FFCC99**. A complement of this color would be **8AB8E0**, and the grayscale version is **BBBBBB**.

A 20% lighter version of the original color is **FFEAC0**, and **A77D58** is the 20% darker color. If you saturate the color by 10%, you get **E0A674**, and if you desaturate by 10%, it is **E0BEA0**.

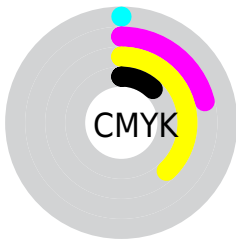
# Distribution



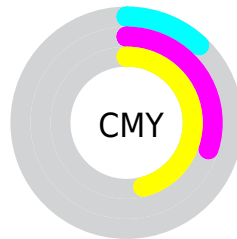
- Red (88%)
- Green (70%)
- Blue (54%)



- Red (88%)
- Yellow (84%)
- Blue (54%)



- Cyan (0%)
- Magenta (21%)
- Yellow (38%)
- Black (12%)



- Cyan (12%)
- Magenta (30%)
- Yellow (46%)

# Brightness & Saturation Gradients

These gradients show how the Hex color E0B28A changes by changing the brightness by 10 percent. The first figure shows a shift by +10% for each color and the second figure -10%.

Similar to the brightness gradients but the following saturation gradients show a change of the Hex color E0B28A by changing the saturation by 10% instead.



 E0B28A

 E0B28A

FFFFFF

 C39770

 FFEAC0

 A77D58

 FFFFDC

 8C6440

 FFFFF8

 714C29

 573614

 3E2000

 250B00

 000000

 E0B28A

 E0B28A

 E0A674

 E0BEA0

 E09A5D

 E0CAB7

 E08E47

 E0D6CD

 E08230

 E0E2E4

 E0761A

 E0EEFA

 E06A04

 E0FAFF

 E06800

 E0FFFF

# Harmonies

## Analogous

The Analogous color harmony consists of three colors that are next to each other on the color wheel.



EFAA9C



E0B28A



C8BB85

# Triad

The Triadic color harmony groups three colors that are evenly spaced from another and form a triangle on the color wheel.



E0B28A



71CAC0



C7B2E6

# Complementary

The Complementary color scheme is a pair of colors which are on the opposite of each other on the color wheel.



E0B28A



8AB8E0

# Split Complementary

Split-complementary colors differ from the complementary color scheme. The scheme consists of three colors, the original color and two neighbors of the complement color.



A2BBF0



E0B28A



69C8DA

# Square

The Square scheme is like the rectangle color scheme, but the four colors are evenly spaced on the color wheel.



E0B28A



8BC8A5



7DC3EB



E3AAD0

# Rectangle

The Rectangle color scheme consists of four colors that form a rectangle on the color wheel.



E0B28A



B4C08A



7DC3EB



BBB5EA

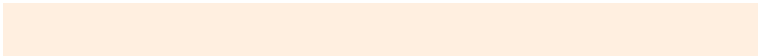


# Sweetspot

The Sweet Spot groups the original color and five complimentary colors.



E0B28A



FFEFE0



E08AB9



80766E



000000



808080



# Same Dimension

The Same Dimension uses a secret algorithm to generate beautiful new colors.



E0B28A



FFC08A



E0DC8A



706A65



B05200



301700



# Inverse Universe

The Inverse Universe completely reimagines the original color for something new.



8AB8E0



8AC8FF



8A8EE0



656B70



005EB0



001A30



# Previews

## White Background



This preview shows how the Hex color E0B28A looks on a white background.

## Color Contrast Check

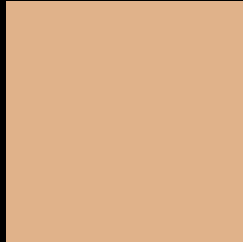
Large Text (above 18pt) WCAG AA × Fail

Any Text WCAG AA × Fail

Large Text (above 18pt) WCAG AAA × Fail

Any Text WCAG AAA × Fail

# Black Background



This preview shows how the Hex color E0B28A looks on a black background.

## Color Contrast Check

Large Text (above 18pt) WCAG AA ✓ Pass

Any Text WCAG AA ✓ Pass

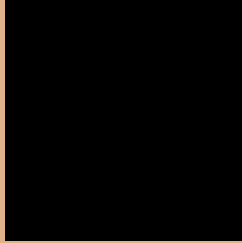
Large Text (above 18pt) WCAG AAA ✓ Pass

Any Text WCAG AAA ✓ Pass

If you want to check with other color combinations, try the [Color Contrast Checker](#).



## Hex E0B28A Background



This preview shows how black text looks on a background with the Hex color E0B28A.

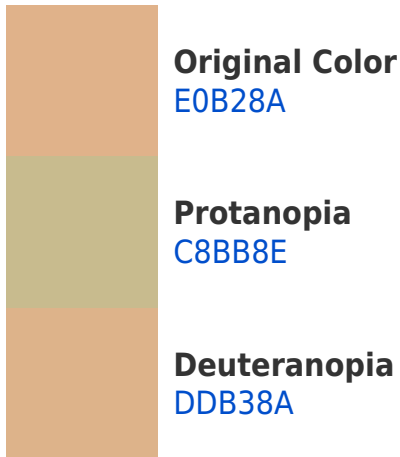


This preview shows how white text looks on a background with the Hex color E0B28A.

# Color Blindness Simulation

Color vision deficiency is a very complex topic, and I could not describe the different causes any better than Wikipedia does, so if you want to learn more, you should check out their [article about color blindness](#).

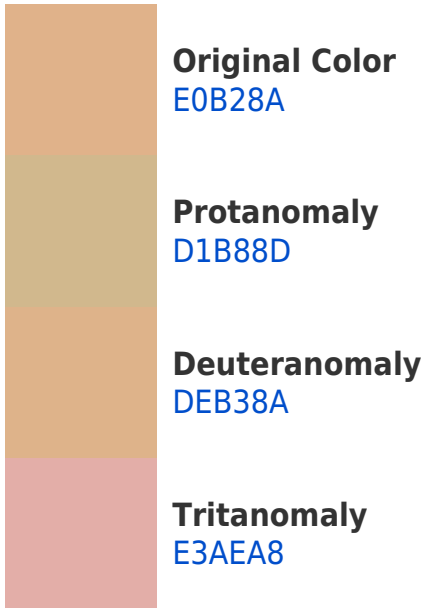
## Dichromacy





**Tritanopia**  
E5ACB9

# Trichromacy



# Monochromacy



# CSS Examples

## Text

The CSS property to change the color of the text to Hex E0B28A is called "color". The color property can be set on classes, ids or directly on the HTML element.

This example shows how text in the color #E0B28A looks like.

```
.text, #text, p{  
    color:#E0B28A  
}
```

If you want to add a text shadow in that color use the text-shadow property, you can generate a text shadow directly with our [CSS Text Shadow Generator](#).

Here you see how black text with a 4 pixel #E0B28A colored shadow looks like.

```
.shadow{ text-shadow: 4px 4px 2px #E0B28A
}
```

## Border

The CSS property to change the border of an element to Hex E0B28A is called "border". The border property can be set on classes, ids or directly on the HTML element.

This example shows the color as border, it can be applied via the CSS property "border" or "border-color".

```
.border, #border, table{ border:4px solid
#E0B28A }
```

If only the border color should be changed use the property `border-color`.

```
.border{ border-color:#E0B28A }
```

If you want to add a box shadow in that color use:

Here you see how a box with a 4 pixel #E0B28A colored shadow looks like.

```
.boxshadow{ -moz-box-shadow:4px 4px 4px  
4px #E0B28A; -webkit-box-shadow:4px 4px  
4px 4px #E0B28A; box-shadow:4px 4px 4px  
4px #E0B28A }
```

# Background

The CSS property to change the background color of an element to Hex E0B28A is called "background". The background property can be set on classes, ids or directly on the HTML element.

```
.background, #background, body{  
background:#E0B28A }
```

If only the background color should be changed can be used:

```
.background{ background-color:#E0B28A }
```

This example shows the color as background, it is applied via the CSS property "background".

To optimize and compress your CSS code, you can use our [online CSS compressor and optimizer](#) based on csstidy. If you want to create a linear or radial gradient as background or border, check our [CSS Gradient Generator](#).



Hey! You found this booklet interesting? Support Converting Colors with the new Membership Option!

The pro membership hides all ads, plus gives you double the colors in the color bucket, and more awesome pro features!

**[Learn more, Memberships starting at \\$2.50/m!](#)**

**Follow me  
on Twitter!**

@ConvertingColor