

Converting Colors

Hex(E0B4AC)

Have a look what the booklet for
Hex(E0B4AC) contains.

Hex(E0B4AC)	3
<i>Conversions</i>	4
<i>Details</i>	6
<i>Harmonies</i>	11
<i>Previews</i>	23
<i>Color Blindness Simulation</i>	26
<i>CSS Examples</i>	29

Color

Hex(E0B4AC)

Conversions

Conversions Part 1

Format	Color
Hex	E0B4AC
RGB	224, 180, 172
RGB Percent	88%, 71%, 67%
CMY	0.1216, 0.2941, 0.3255
CMYK	0.00, 0.20, 0.23, 0.12
HSL	9°, 46%, 78%
HSV	9°, 23%, 88%
XYZ	54.5081, 51.4684, 46.0912
YIQ	192.2440, 28.7920, 6.8400

Conversions

Conversions Part 2

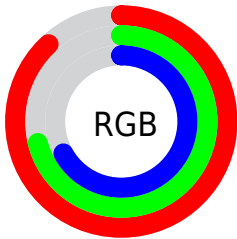
Format	Color
RYB	224, 181, 172
Decimal	14726316
CIELab	76.96, 14.71, 10.11
CIElCh	77, 17.851, 34.493
Yxy	51.4684, 0.3584, 0.3385
Android (android.graphics.Color)	4292916396 (0xFFE0B4AC)
YUV	192.2440, -9.9803, 27.8500
Hunter-Lab	71.7415, 10.0742, 12.1274

Details

The Hex color **E0B4AC** is a light color, and the websafe version is hex **CC9999**. A complement of this color would be **ACD8E0**, and the grayscale version is **C0C0C0**.

A 20% lighter version of the original color is **FFECE3**, and **A87F78** is the 20% darker color. If you saturate the color by 10%, you get **E0A196**, and if you desaturate by 10%, it is **E0C7C2**.

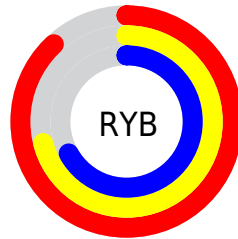
Distribution



Red (88%)

Green (71%)

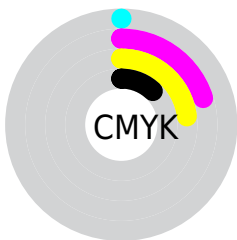
Blue (67%)



Red (88%)

Yellow (71%)

Blue (67%)

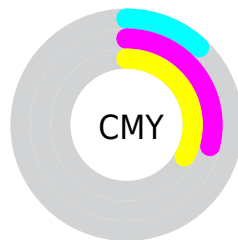


Cyan (0%)

Magenta (20%)

Yellow (23%)

Black (12%)



Cyan (12%)

Magenta (29%)

Yellow (33%)

Brightness & Saturation Gradients

These gradients show how the Hex color E0B4AC changes by changing the brightness by 10 percent. The first figure shows a shift by +10% for each color and the second figure -10%.

Similar to the brightness gradients but the following saturation gradients show a change of the Hex color E0B4AC by changing the saturation by 10% instead.

 E0B4AC

 E0B4AC

FFFFFF

 C49991

 FFECE3

 A87F78

 8D665F

 734E47

 593731

 41211C

 2B0C01

 040000

 000000

 E0B4AC

 E0B4AC

 E0A196

 E0C7C2

 E08E7F

 E0DAD9

 E07B69

 E0EDEF

 E06852

 E0FFFF

 E0553C

 E04226

 E02F0F

 E02200

Harmonies

Analogous

The Analogous color harmony consists of three colors that are next to each other on the color wheel.



E0B3BC



E0B4AC



D8B8A1

Triad

The Triadic color harmony groups three colors that are evenly spaced from another and form a triangle on the color wheel.



E0B4AC



A4C6AF



AFBFDf

Complementary

The Complementary color scheme is a pair of colors which are on the opposite of each other on the color wheel.



E0B4AC



ACD8E0

Split Complementary

Split-complementary colors differ from the complementary color scheme. The scheme consists of three colors, the original color and two neighbors of the complement color.



9CC4DB



E0B4AC



96C8C0

Square

The Square scheme is like the rectangle color scheme, but the four colors are evenly spaced on the color wheel.



E0B4AC



B6C3A3



93C7D0



C4B9D9

Rectangle

The Rectangle color scheme consists of four colors that form a rectangle on the color wheel.



E0B4AC



CEBC9D



93C7D0



A8C0DE

Sweetspot

The Sweet Spot groups the original color and five complimentary colors.



E0B4AC



FFF0ED



E0ACD8



807775



000000



808080

Same Dimension

The Same Dimension uses a secret algorithm to generate beautiful new colors.



E0B4AC



FFC3B8



E0CEAC



706765



B01B00



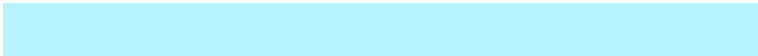
300700

Inverse Universe

The Inverse Universe completely reimagines the original color for something new.



ACD8E0



B8F4FF



ACBEE0



656E70



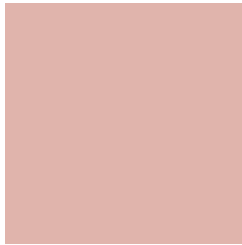
0095B0



002930

Previews

White Background



This preview shows how the Hex color E0B4AC looks on a white background.

Color Contrast Check

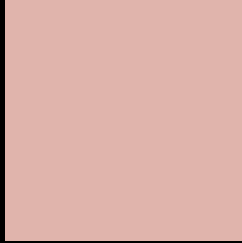
Large Text (above 18pt) WCAG AA × Fail

Any Text WCAG AA × Fail

Large Text (above 18pt) WCAG AAA × Fail

Any Text WCAG AAA × Fail

Black Background



This preview shows how the Hex color E0B4AC looks on a black background.

Color Contrast Check

Large Text (above 18pt) WCAG AA ✓ Pass

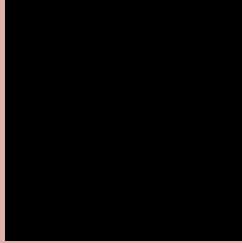
Any Text WCAG AA ✓ Pass

Large Text (above 18pt) WCAG AAA ✓ Pass

Any Text WCAG AAA ✓ Pass

If you want to check with other color combinations, try the [Color Contrast Checker](#).

Hex E0B4AC Background



This preview shows how black text looks on a background with the Hex color E0B4AC.

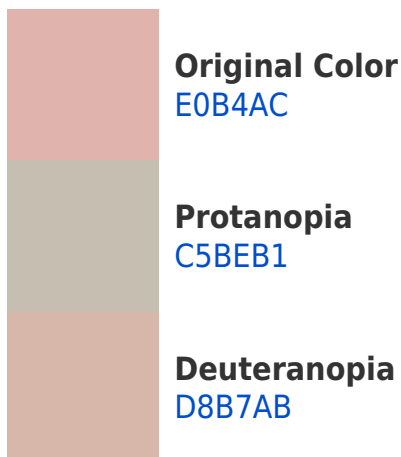


This preview shows how white text looks on a background with the Hex color E0B4AC.

Color Blindness Simulation

Color vision deficiency is a very complex topic, and I could not describe the different causes any better than Wikipedia does, so if you want to learn more, you should check out their [article about color blindness](#).

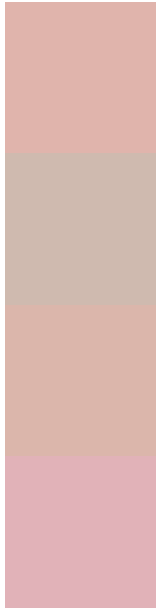
Dichromacy





Tritanopia
E2B1BF

Trichromacy



Original Color
E0B4AC

Protanomaly
CFBAAF

Deuteranomaly
DDB6AB

Tritanomaly
E1B2B8

Monochromacy



Original Color
E0B4AC

Achromatopsia
C0C0C0

Achromatomaly
CCBCB9

CSS Examples

Text

The CSS property to change the color of the text to Hex E0B4AC is called "color". The color property can be set on classes, ids or directly on the HTML element.

This example shows how text in the color #E0B4AC looks like.

```
.text, #text, p{  
    color:#E0B4AC  
}
```

If you want to add a text shadow in that color use the text-shadow property, you can generate a text shadow directly with our [CSS Text Shadow Generator](#).

Here you see how black text with a 4 pixel #E0B4AC colored shadow looks like.

```
.shadow{ text-shadow: 4px 4px 2px #E0B4AC }  
}
```

Border

The CSS property to change the border of an element to Hex E0B4AC is called "border". The border property can be set on classes, ids or directly on the HTML element.

This example shows the color as border, it can be applied via the CSS property "border" or "border-color".

```
.border, #border, table{ border:4px solid #E0B4AC }  
}
```

If only the border color should be changed use the property `border-color`.

```
.border{ border-color:#E0B4AC }
```

If you want to add a box shadow in that color use:

Here you see how a box with a 4 pixel #E0B4AC colored shadow looks like.

```
.boxshadow{ -moz-box-shadow:4px 4px 4px  
4px #E0B4AC; -webkit-box-shadow:4px 4px  
4px 4px #E0B4AC; box-shadow:4px 4px 4px  
4px #E0B4AC }
```

Background

The CSS property to change the background color of an element to Hex E0B4AC is called "background". The background property can be set on classes, ids or directly on the HTML element.

```
.background, #background, body{  
background:#E0B4AC }
```

If only the background color should be changed can be used:

```
.background{ background-color:#E0B4AC }
```

This example shows the color as background, it is applied via the CSS property "background".

To optimize and compress your CSS code, you can use our [online CSS compressor and optimizer](#) based on csstidy. If you want to create a linear or radial gradient as background or border, check our [CSS Gradient Generator](#).

Hey! You found this booklet interesting? Support Converting Colors with the new Membership Option!

The pro membership hides all ads, plus gives you double the colors in the color bucket, and more awesome pro features!

[Learn more, Memberships starting at \\$2.50/m!](#)

**Follow me
on Twitter!**

@ConvertingColor