

Converting Colors

Hex(E0B4BF)

Have a look what the booklet for
Hex(E0B4BF) contains.

Hex(E0B4BF)	3
<i>Conversions</i>	4
<i>Details</i>	6
<i>Harmonies</i>	11
<i>Previews</i>	23
<i>Color Blindness Simulation</i>	26
<i>CSS Examples</i>	29

Color

Hex(E0B4BF)

Conversions

Conversions Part 1

Format	Color
Hex	E0B4BF
RGB	224, 180, 191
RGB Percent	88%, 71%, 75%
CMY	0.1216, 0.2941, 0.2510
CMYK	0.00, 0.20, 0.15, 0.12
HSL	345°, 42%, 79%
HSV	345°, 20%, 88%
XYZ	56.4657, 52.2514, 56.3997
YIQ	194.4100, 22.6930, 12.7490

Conversions

Conversions Part 2

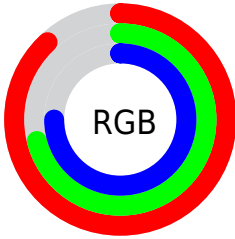
Format	Color
RYP	224, 180, 191
Decimal	14726335
CIELab	77.43, 17.61, 0.47
CIElCh	77, 17.612, 1.519
Yxy	52.2514, 0.3420, 0.3165
Android (android.graphics.Color)	4292916415 (0xFFE0B4BF)
YUV	194.4100, -1.6811, 25.9504
Hunter-Lab	72.2851, 12.9367, 4.3392

Details

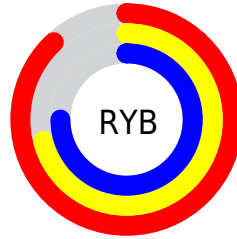
The Hex color **E0B4BF** is a light color, and the websafe version is hex **FFCCCC**. A complement of this color would be **B4E0D5**, and the grayscale version is **C2C2C2**.

A 20% lighter version of the original color is **FFECF7**, and **A87F8A** is the 20% darker color. If you saturate the color by 10%, you get **E09EAE**, and if you desaturate by 10%, it is **E0CAD0**.

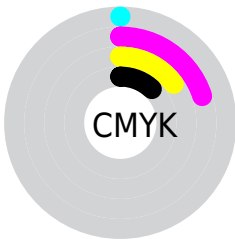
Distribution



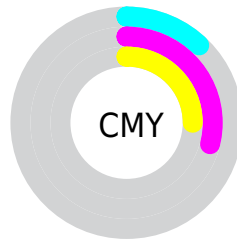
- Red (88%)
- Green (71%)
- Blue (75%)



- Red (88%)
- Yellow (71%)
- Blue (75%)



- Cyan (0%)
- Magenta (20%)
- Yellow (15%)
- Black (12%)



- Cyan (12%)
- Magenta (29%)
- Yellow (25%)

Brightness & Saturation Gradients

These gradients show how the Hex color E0B4BF changes by changing the brightness by 10 percent. The first figure shows a shift by +10% for each color and the second figure -10%.

Similar to the brightness gradients but the following saturation gradients show a change of the Hex color E0B4BF by changing the saturation by 10% instead.

 E0B4BF

 E0B4BF

FFFFFF

 C499A4

 FFECE7

 A87F8A

 8D6670

 734E58

 5A3641

 42202B

 2B0B16

 100000

 000000

 E0B4BF

 E0B4BF

 E09EAE

 E0CAD0

 E0879D

 E0E1E1

 E0718D

 E0F7F1

 E05A7C

 E0FFFF

 E0446B

 E02E5A

 E01749

 E00139

 E00038

Harmonies

Analogous

The Analogous color harmony consists of three colors that are next to each other on the color wheel.



D5B6CF



E0B4BF



E1B5AF

Triad

The Triadic color harmony groups three colors that are evenly spaced from another and form a triangle on the color wheel.



E0B4BF



B9C3A3



9CC5DB

Complementary

The Complementary color scheme is a pair of colors which are on the opposite of each other on the color wheel.



E0B4BF



B4E0D5

Split Complementary

Split-complementary colors differ from the complementary color scheme. The scheme consists of three colors, the original color and two neighbors of the complement color.



94C8D0



E0B4BF



A7C7AF

Square

The Square scheme is like the rectangle color scheme, but the four colors are evenly spaced on the color wheel.



E0B4BF



CBBE9F



99C9C0



AEC0E0

Rectangle

The Rectangle color scheme consists of four colors that form a rectangle on the color wheel.



E0B4BF



DDB8A6



99C9C0



98C6D8

Sweetspot

The Sweet Spot groups the original color and five complimentary colors.



E0B4BF



FFF0F4



D5B4E0



807779



000000



808080

Same Dimension

The Same Dimension uses a secret algorithm to generate beautiful new colors.



E0B4BF



FFC2D1



E0BFB4



706568



B0002C



30000C

Inverse Universe

The Inverse Universe completely reimagines the original color for something new.



E0B4BF



FFC2D1



B4D5E0



706568



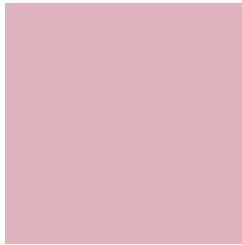
B0002C



30000C

Previews

White Background



This preview shows how the Hex color E0B4BF looks on a white background.

Color Contrast Check

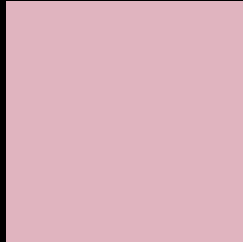
Large Text (above 18pt) WCAG AA × Fail

Any Text WCAG AA × Fail

Large Text (above 18pt) WCAG AAA × Fail

Any Text WCAG AAA × Fail

Black Background



This preview shows how the Hex color E0B4BF looks on a black background.

Color Contrast Check

Large Text (above 18pt) WCAG AA ✓ Pass

Any Text WCAG AA ✓ Pass

Large Text (above 18pt) WCAG AAA ✓ Pass

Any Text WCAG AAA ✓ Pass

If you want to check with other color combinations, try the [Color Contrast Checker](#).

Hex E0B4BF Background



This preview shows how black text looks on a background with the Hex color E0B4BF.

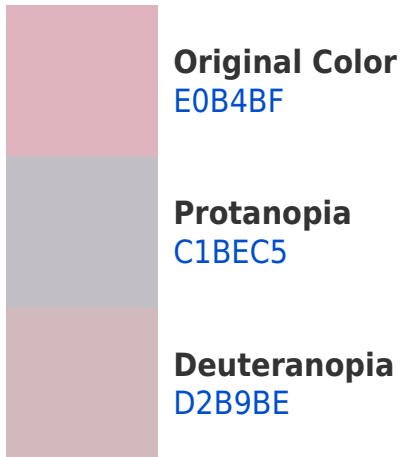


This preview shows how white text looks on a background with the Hex color E0B4BF.

Color Blindness Simulation

Color vision deficiency is a very complex topic, and I could not describe the different causes any better than Wikipedia does, so if you want to learn more, you should check out their [article about color blindness](#).

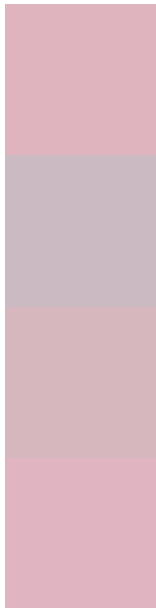
Dichromacy





Tritanopia
E0B4C2

Trichromacy



Original Color
E0B4BF

Protanomaly
CCBAC3

Deuteranomaly
D7B7BE

Tritanomaly
E0B4C1

Monochromacy



Original Color
E0B4BF

Achromatopsia
C2C2C2

Achromatomaly
CDBDC1

CSS Examples

Text

The CSS property to change the color of the text to Hex E0B4BF is called "color". The color property can be set on classes, ids or directly on the HTML element.

This example shows how text in the color #E0B4BF looks like.

```
.text, #text, p{  
    color:#E0B4BF  
}
```

If you want to add a text shadow in that color use the text-shadow property, you can generate a text shadow directly with our [CSS Text Shadow Generator](#).

Here you see how black text with a 4 pixel #E0B4BF colored shadow looks like.

```
.shadow{ text-shadow: 4px 4px 2px #E0B4BF  
}
```

Border

The CSS property to change the border of an element to Hex E0B4BF is called "border". The border property can be set on classes, ids or directly on the HTML element.

This example shows the color as border, it can be applied via the CSS property "border" or "border-color".

```
.border, #border, table{ border:4px solid  
#E0B4BF }
```

If only the border color should be changed use the property `border-color`.

```
.border{ border-color:#E0B4BF }
```

If you want to add a box shadow in that color use:

Here you see how a box with a 4 pixel #E0B4BF colored shadow looks like.

```
.boxshadow{ -moz-box-shadow:4px 4px 4px  
4px #E0B4BF; -webkit-box-shadow:4px 4px  
4px 4px #E0B4BF; box-shadow:4px 4px 4px  
4px #E0B4BF }
```

Background

The CSS property to change the background color of an element to Hex E0B4BF is called "background". The background property can be set on classes, ids or directly on the HTML element.

```
.background, #background, body{  
background:#E0B4BF }
```

If only the background color should be changed can be used:

```
.background{ background-color:#E0B4BF }
```

This example shows the color as background, it is applied via the CSS property "background".

To optimize and compress your CSS code, you can use our [online CSS compressor and optimizer](#) based on csstidy. If you want to create a linear or radial gradient as background or border, check our [CSS Gradient Generator](#).

Hey! You found this booklet interesting? Support Converting Colors with the new Membership Option!

The pro membership hides all ads, plus gives you double the colors in the color bucket, and more awesome pro features!

[Learn more, Memberships starting at \\$2.50/m!](#)

**Follow me
on Twitter!**

@ConvertingColor