

# Converting Colors

Hex(E0B694)

Have a look what the booklet for  
Hex(E0B694) contains.

<b>Hex(E0B694)</b> .....	3
<b><i>Conversions</i></b> .....	4
<b><i>Details</i></b> .....	6
<b><i>Harmonies</i></b> .....	11
<b><i>Previews</i></b> .....	23
<b><i>Color Blindness Simulation</i></b> .....	26
<b><i>CSS Examples</i></b> .....	29

**Color**

**Hex(E0B694)**

# Conversions

## Conversions Part 1

<b>Format</b>	<b>Color</b>
Hex	E0B694
RGB	224, 182, 148
RGB Percent	88%, 71%, 58%
CMY	0.1216, 0.2863, 0.4196
CMYK	0.00, 0.19, 0.34, 0.12
HSL	27°, 55%, 73%
HSV	27°, 34%, 88%
XYZ	52.8137, 51.4413, 35.1626
YIQ	190.6820, 35.9460, -1.6700

# Conversions

## Conversions Part 2

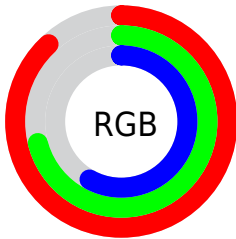
<b>Format</b>	<b>Color</b>
<b>R<sub>YB</sub></b>	224, 210, 148
Decimal	14726804
CIE <sub>Lab</sub>	76.95, 10.43, 23.04
CIE <sub>LCh</sub>	77, 25.288, 65.633
Yxy	51.4413, 0.3788, 0.3690
Android (android.graphics.Color)	4292916884 (0xFFE0B694)
YUV	190.6820, -21.0422, 29.2199
Hunter-Lab	71.7226, 5.9259, 21.1384

# Details

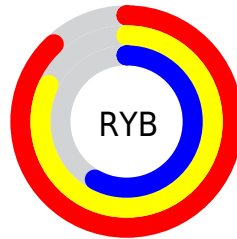
The Hex color **E0B694** is a light color, and the websafe version is hex **FFCC99**. A complement of this color would be **94BEE0**, and the grayscale version is **BFBFBF**.

A 20% lighter version of the original color is **FFEECA**, and **A78161** is the 20% darker color. If you saturate the color by 10%, you get **E0AA7E**, and if you desaturate by 10%, it is **E0C2AA**.

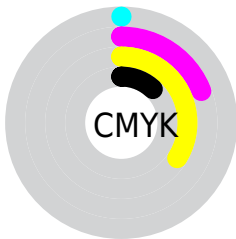
# Distribution



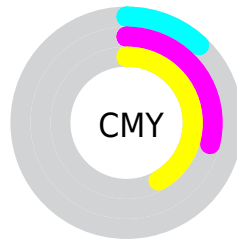
- Red (88%)
- Green (71%)
- Blue (58%)



- Red (88%)
- Yellow (82%)
- Blue (58%)



- Cyan (0%)
- Magenta (19%)
- Yellow (34%)
- Black (12%)



- Cyan (12%)
- Magenta (29%)
- Yellow (42%)

# Brightness & Saturation Gradients

These gradients show how the Hex color E0B694 changes by changing the brightness by 10 percent. The first figure shows a shift by +10% for each color and the second figure -10%.

Similar to the brightness gradients but the following saturation gradients show a change of the Hex color E0B694 by changing the saturation by 10% instead.



 E0B694

 E0B694

FFFFFF

 C39B7A

 FFEECA

 A78161

 FFFFFE6

 8C6849

 725032

 58391C

 3F2305

 270F00

 000000

 E0B694

 E0B694

 E0AA7E

 E0C2AA

 E09D67

 E0CFC1

 E09151

 E0DBD7

 E0843A

 E0E8EE

 E07824

 E0F4FF

 E06C0E

 E0FFFF

 E06400

# Harmonies

## Analogous

The Analogous color harmony consists of three colors that are next to each other on the color wheel.



ECB0A4



E0B694



CBBE8F

# Triad

The Triadic color harmony groups three colors that are evenly spaced from another and form a triangle on the color wheel.



E0B694



81CBC2



C7B6E4

# Complementary

The Complementary color scheme is a pair of colors which are on the opposite of each other on the color wheel.



E0B694



94BEE0

# Split Complementary

Split-complementary colors differ from the complementary color scheme. The scheme consists of three colors, the original color and two neighbors of the complement color.



A8BFEC



E0B694



7BCAD8

# Square

The Square scheme is like the rectangle color scheme, but the four colors are evenly spaced on the color wheel.



E0B694



97C9AA



8AC6E8



E0B0D2

# Rectangle

The Rectangle color scheme consists of four colors that form a rectangle on the color wheel.



E0B694



BAC393



8AC6E8



BDB9E8



# Sweetspot

The Sweet Spot groups the original color and five complimentary colors.



E0B694



FFF1E6



E094BF



807770



000000



808080



# Same Dimension

The Same Dimension uses a secret algorithm to generate beautiful new colors.



E0B694



FFC596



E0DB94



706A65



B04F00



301600

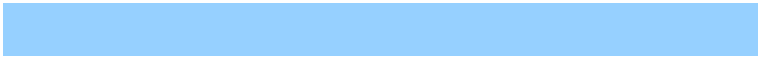


# Inverse Universe

The Inverse Universe completely reimagines the original color for something new.



94BEE0



96D0FF



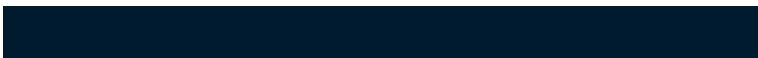
9499E0



656B70



0061B0



001B30



# Previews

## White Background



This preview shows how the Hex color E0B694 looks on a white background.

## Color Contrast Check

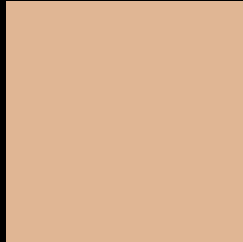
Large Text (above 18pt) WCAG AA × Fail

Any Text WCAG AA × Fail

Large Text (above 18pt) WCAG AAA × Fail

Any Text WCAG AAA × Fail

# Black Background



This preview shows how the Hex color E0B694 looks on a black background.

## Color Contrast Check

Large Text (above 18pt) WCAG AA ✓ Pass

Any Text WCAG AA ✓ Pass

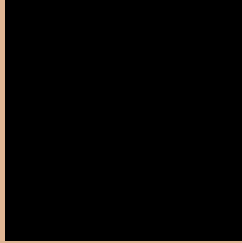
Large Text (above 18pt) WCAG AAA ✓ Pass

Any Text WCAG AAA ✓ Pass

If you want to check with other color combinations, try the [Color Contrast Checker](#).



## Hex E0B694 Background



This preview shows how black text looks on a background with the Hex color E0B694.

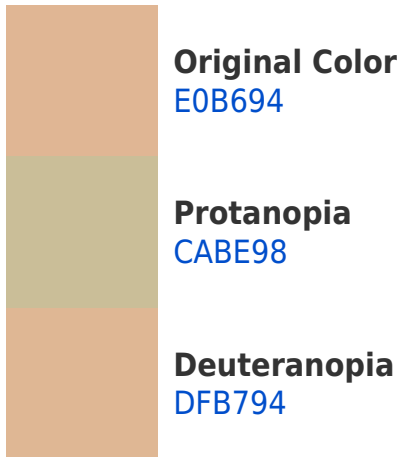


This preview shows how white text looks on a background with the Hex color E0B694.

# Color Blindness Simulation

Color vision deficiency is a very complex topic, and I could not describe the different causes any better than Wikipedia does, so if you want to learn more, you should check out their [article about color blindness](#).

## Dichromacy



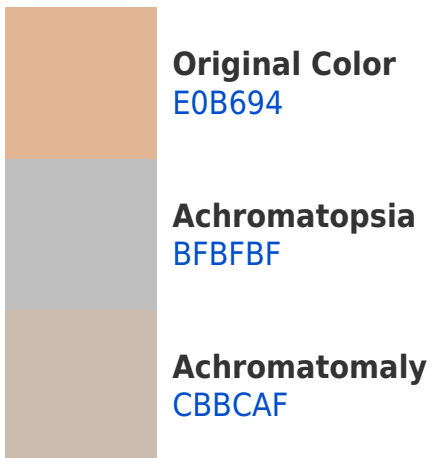


**Tritanopia**  
E4B0BE

# Trichromacy



# Monochromacy



# CSS Examples

## Text

The CSS property to change the color of the text to Hex E0B694 is called "color". The color property can be set on classes, ids or directly on the HTML element.

This example shows how text in the color #E0B694 looks like.

```
.text, #text, p{  
    color:#E0B694  
}
```

If you want to add a text shadow in that color use the text-shadow property, you can generate a text shadow directly with our [CSS Text Shadow Generator](#).

Here you see how black text with a 4 pixel #E0B694 colored shadow looks like.

```
.shadow{ text-shadow: 4px 4px 2px #E0B694
}
```

## Border

The CSS property to change the border of an element to Hex E0B694 is called "border". The border property can be set on classes, ids or directly on the HTML element.

This example shows the color as border, it can be applied via the CSS property "border" or "border-color".

```
.border, #border, table{ border:4px solid
#E0B694 }
```

If only the border color should be changed use the property `border-color`.

```
.border{ border-color:#E0B694 }
```

If you want to add a box shadow in that color use:

Here you see how a box with a 4 pixel #E0B694 colored shadow looks like.

```
.boxshadow{ -moz-box-shadow:4px 4px 4px  
4px #E0B694; -webkit-box-shadow:4px 4px  
4px 4px #E0B694; box-shadow:4px 4px 4px  
4px #E0B694 }
```

# Background

The CSS property to change the background color of an element to Hex E0B694 is called "background". The background property can be set on classes, ids or directly on the HTML element.

```
.background, #background, body{  
background:#E0B694 }
```

If only the background color should be changed can be used:

```
.background{ background-color:#E0B694 }
```

This example shows the color as background, it is applied via the CSS property "background".

To optimize and compress your CSS code, you can use our [online CSS compressor and optimizer](#) based on csstidy. If you want to create a linear or radial gradient as background or border, check our [CSS Gradient Generator](#).



Hey! You found this booklet interesting? Support Converting Colors with the new Membership Option!

The pro membership hides all ads, plus gives you double the colors in the color bucket, and more awesome pro features!

**[Learn more, Memberships starting at \\$2.50/m!](#)**

**Follow me  
on Twitter!**

@ConvertingColor