

Converting Colors

Hex(E0B6AB)

Have a look what the booklet for
Hex(E0B6AB) contains.

Hex(E0B6AB)	3
<i>Conversions</i>	4
<i>Details</i>	6
<i>Harmonies</i>	11
<i>Previews</i>	23
<i>Color Blindness Simulation</i>	26
<i>CSS Examples</i>	29

Color

Hex(E0B6AB)

Conversions

Conversions Part 1

Format	Color
Hex	E0B6AB
RGB	224, 182, 171
RGB Percent	88%, 71%, 67%
CMY	0.1216, 0.2863, 0.3294
CMYK	0.00, 0.19, 0.24, 0.12
HSL	12°, 46%, 77%
HSV	12°, 24%, 88%
XYZ	54.8191, 52.2435, 45.7228
YIQ	193.3040, 28.5630, 5.4830

Conversions

Conversions Part 2

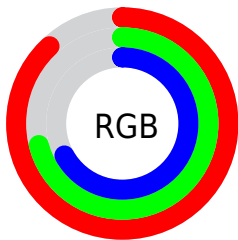
Format	Color
RYB	224, 185, 171
Decimal	14726827
CIELab	77.43, 13.50, 11.31
CIELCh	77, 17.612, 39.958
Yxy	52.2435, 0.3588, 0.3419
Android (android.graphics.Color)	4292916907 (0xFFE0B6AB)
YUV	193.3040, -10.9959, 26.9204
Hunter-Lab	72.2796, 8.8905, 13.0900

Details

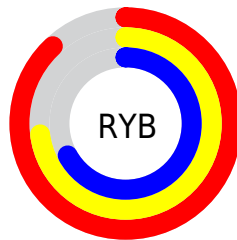
The Hex color **E0B6AB** is a light color, and the websafe version is hex **FFCCCC**. A complement of this color would be **ABD5E0**, and the grayscale version is **C1C1C1**.

A 20% lighter version of the original color is **FFEEE2**, and **A88177** is the 20% darker color. If you saturate the color by 10%, you get **E0A495**, and if you desaturate by 10%, it is **E0C8C1**.

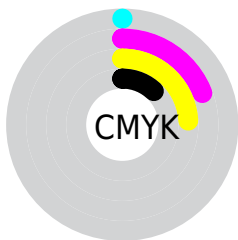
Distribution



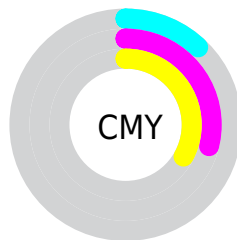
- Red (88%)
- Green (71%)
- Blue (67%)



- Red (88%)
- Yellow (73%)
- Blue (67%)



- Cyan (0%)
- Magenta (19%)
- Yellow (24%)
- Black (12%)



- Cyan (12%)
- Magenta (29%)
- Yellow (33%)

Brightness & Saturation Gradients

These gradients show how the Hex color E0B6AB changes by changing the brightness by 10 percent. The first figure shows a shift by +10% for each color and the second figure -10%.

Similar to the brightness gradients but the following saturation gradients show a change of the Hex color E0B6AB by changing the saturation by 10% instead.

 E0B6AB

 E0B6AB

FFFFFF

 C49B90

 FFEEE2

 A88177

 8D685E

 735046

 5A3930

 41231B

 2B0E00

 060000

 000000

 E0B6AB

 E0B6AB

 E0A495

 E0C8C1

 E0927E

 E0DAD8

 E08168

 E0EBEE

 E06F51

 E0FDFF

 E05D3B

 E0FFFF

 E04B25

 E03A0E

 E02E00

Harmonies

Analogous

The Analogous color harmony consists of three colors that are next to each other on the color wheel.



E1B4BA



E0B6AB



D6BAA1

Triad

The Triadic color harmony groups three colors that are evenly spaced from another and form a triangle on the color wheel.



E0B6AB



A2C8B4



B4BDFD

Complementary

The Complementary color scheme is a pair of colors which are on the opposite of each other on the color wheel.



E0B6AB



ABD5E0

Split Complementary

Split-complementary colors differ from the complementary color scheme. The scheme consists of three colors, the original color and two neighbors of the complement color.



A1C4DD



E0B6AB



96C9C4

Square

The Square scheme is like the rectangle color scheme, but the four colors are evenly spaced on the color wheel.



E0B6AB



B4C5A6



95C8D4



C9B9D8

Rectangle

The Rectangle color scheme consists of four colors that form a rectangle on the color wheel.



E0B6AB



CCBE9F



95C8D4



ADC1E0

Sweetspot

The Sweet Spot groups the original color and five complimentary colors.



E0B6AB



FFF1ED



E0ABD5



807775



000000



808080

Same Dimension

The Same Dimension uses a secret algorithm to generate beautiful new colors.



E0B6AB



FFC6B8



E0D0AB



706765



B02500



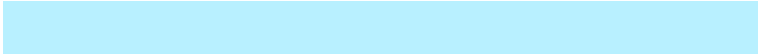
300A00

Inverse Universe

The Inverse Universe completely reimagines the original color for something new.



ABD5E0



B8FOFF



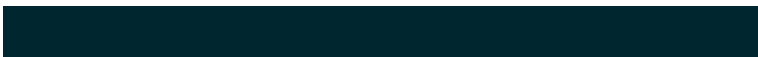
ABBEO



656E70



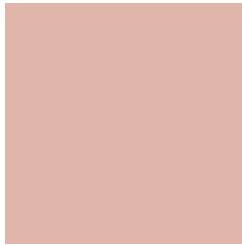
008BB0



002630

Previews

White Background



This preview shows how the Hex color E0B6AB looks on a white background.

Color Contrast Check

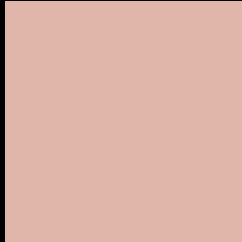
Large Text (above 18pt) WCAG AA × Fail

Any Text WCAG AA × Fail

Large Text (above 18pt) WCAG AAA × Fail

Any Text WCAG AAA × Fail

Black Background



This preview shows how the Hex color E0B6AB looks on a black background.

Color Contrast Check

Large Text (above 18pt) WCAG AA ✓ Pass

Any Text WCAG AA ✓ Pass

Large Text (above 18pt) WCAG AAA ✓ Pass

Any Text WCAG AAA ✓ Pass

If you want to check with other color combinations, try the [Color Contrast Checker](#).

Hex E0B6AB Background



This preview shows how black text looks on a background with the Hex color E0B6AB.



This preview shows how white text looks on a background with the Hex color E0B6AB.

Color Blindness Simulation

Color vision deficiency is a very complex topic, and I could not describe the different causes any better than Wikipedia does, so if you want to learn more, you should check out their [article about color blindness](#).

Dichromacy



Original Color
E0B6AB

Protanopia
C7BFB0

Deuteranopia
DAB9AB



Tritanopia
E3B3C1

Trichromacy



Original Color
E0B6AB

Protanomaly
D0BCAE

Deuteranomaly
DCB8AB

Tritanomaly
E2B4B9

Monochromacy



Original Color
E0B6AB

Achromatopsia
C1C1C1

Achromatomaly
CCBDB9

CSS Examples

Text

The CSS property to change the color of the text to Hex E0B6AB is called "color". The color property can be set on classes, ids or directly on the HTML element.

This example shows how text in the color #E0B6AB looks like.

```
.text, #text, p{  
    color:#E0B6AB  
}
```

If you want to add a text shadow in that color use the text-shadow property, you can generate a text shadow directly with our [CSS Text Shadow Generator](#).

Here you see how black text with a 4 pixel #E0B6AB colored shadow looks like.

```
.shadow{ text-shadow: 4px 4px 2px #E0B6AB
}
```

Border

The CSS property to change the border of an element to Hex E0B6AB is called "border". The border property can be set on classes, ids or directly on the HTML element.

This example shows the color as border, it can be applied via the CSS property "border" or "border-color".

```
.border, #border, table{ border:4px solid
#E0B6AB }
```

If only the border color should be changed use the property `border-color`.

```
.border{ border-color:#E0B6AB }
```

If you want to add a box shadow in that color use:

Here you see how a box with a 4 pixel #E0B6AB colored shadow looks like.

```
.boxshadow{ -moz-box-shadow:4px 4px 4px  
4px #E0B6AB; -webkit-box-shadow:4px 4px  
4px 4px #E0B6AB; box-shadow:4px 4px 4px  
4px #E0B6AB }
```

Background

The CSS property to change the background color of an element to Hex E0B6AB is called "background". The background property can be set on classes, ids or directly on the HTML element.

```
.background, #background, body{  
background:#E0B6AB }
```

If only the background color should be changed can be used:

```
.background{ background-color:#E0B6AB }
```

This example shows the color as background, it is applied via the CSS property "background".

To optimize and compress your CSS code, you can use our [online CSS compressor and optimizer](#) based on csstidy. If you want to create a linear or radial gradient as background or border, check our [CSS Gradient Generator](#).

Hey! You found this booklet interesting? Support Converting Colors with the new Membership Option!

The pro membership hides all ads, plus gives you double the colors in the color bucket, and more awesome pro features!

[Learn more, Memberships starting at \\$2.50/m!](#)

**Follow me
on Twitter!**

@ConvertingColor