

Converting Colors

Hex(E0B795)

Have a look what the booklet for
Hex(E0B795) contains.

Hex(E0B795)	3
<i>Conversions</i>	4
<i>Details</i>	6
<i>Harmonies</i>	11
<i>Previews</i>	23
<i>Color Blindness Simulation</i>	26
<i>CSS Examples</i>	29

Color

Hex(E0B795)

Conversions

Conversions Part 1

Format	Color
Hex	E0B795
RGB	224, 183, 149
RGB Percent	88%, 72%, 58%
CMY	0.1216, 0.2824, 0.4157
CMYK	0.00, 0.18, 0.33, 0.12
HSL	27°, 55%, 73%
HSV	27°, 33%, 88%
XYZ	53.0988, 51.8842, 35.6498
YIQ	191.3830, 35.3500, -1.8820

Conversions

Conversions Part 2

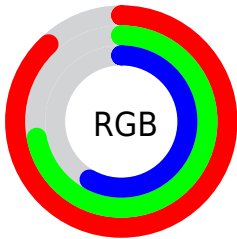
Format	Color
R _Y B	224, 211, 149
Decimal	14727061
CIE Lab	77.21, 10.03, 22.86
CIE LCh	77, 24.964, 66.323
Yxy	51.8842, 0.3776, 0.3689
Android (android.graphics.Color)	4292917141 (0xFFE0B795)
YUV	191.3830, -20.8948, 28.6051
Hunter-Lab	72.0307, 5.5309, 21.0774

Details

The Hex color **E0B795** is a light color, and the websafe version is hex **FFCC99**. A complement of this color would be **95BEE0**, and the grayscale version is **C0C0C0**.

A 20% lighter version of the original color is **FFEFCB**, and **A88262** is the 20% darker color. If you saturate the color by 10%, you get **E0AB7F**, and if you desaturate by 10%, it is **E0C3AB**.

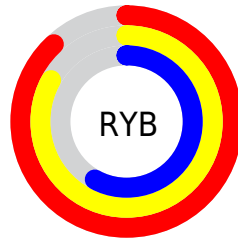
Distribution



Red (88%)

Green (72%)

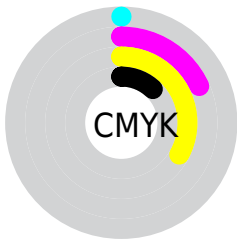
Blue (58%)



Red (88%)

Yellow (83%)

Blue (58%)

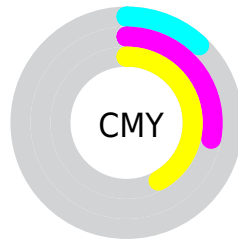


Cyan (0%)

Magenta (18%)

Yellow (33%)

Black (12%)



Cyan (12%)

Magenta (28%)

Yellow (42%)

Brightness & Saturation Gradients

These gradients show how the Hex color E0B795 changes by changing the brightness by 10 percent. The first figure shows a shift by +10% for each color and the second figure -10%.

Similar to the brightness gradients but the following saturation gradients show a change of the Hex color E0B795 by changing the saturation by 10% instead.

 E0B795

 E0B795

FFFFFF

 C39C7B

 FFEFCB

 A88262

 FFFFE7

 8C694A

 725133

 583A1D

 3F2406

 271000

 000000

 E0B795

 E0B795

 E0AB7F

 E0C3AB

 E09F68

 E0CFC2

 E09252

 E0DCD8

 E0863B

 E0E8EF

 E07A25

 E0F4FF

 E06E0F

 E0FFFF

 E06600

Harmonies

Analogous

The Analogous color harmony consists of three colors that are next to each other on the color wheel.



ECB1A4



E0B795



CBBF91

Triad

The Triadic color harmony groups three colors that are evenly spaced from another and form a triangle on the color wheel.



E0B795



83CCC3



C9B7E4

Complementary

The Complementary color scheme is a pair of colors which are on the opposite of each other on the color wheel.



E0B795



95BEE0

Split Complementary

Split-complementary colors differ from the complementary color scheme. The scheme consists of three colors, the original color and two neighbors of the complement color.



AABFEC



E0B795



7DCBD9

Square

The Square scheme is like the rectangle color scheme, but the four colors are evenly spaced on the color wheel.



E0B795



97CAAB



8CC6E8



E1B1D2

Rectangle

The Rectangle color scheme consists of four colors that form a rectangle on the color wheel.



E0B795



BAC395



8CC6E8



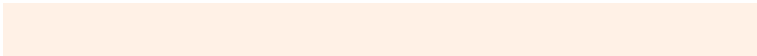
BFBAE8

Sweetspot

The Sweet Spot groups the original color and five complimentary colors.



E0B795



FFF1E6



E095BE



807770



000000



808080

Same Dimension

The Same Dimension uses a secret algorithm to generate beautiful new colors.



E0B795



FFC799



E0DC95



706A65



B05000



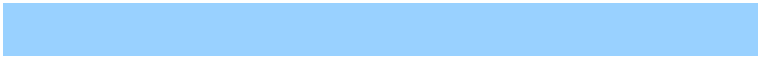
301600

Inverse Universe

The Inverse Universe completely reimagines the original color for something new.



95BEE0



99D1FF



9599E0



656B70



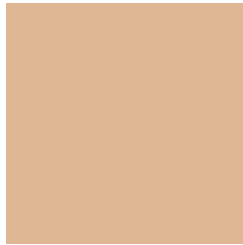
0060B0



001A30

Previews

White Background



This preview shows how the Hex color E0B795 looks on a white background.

Color Contrast Check

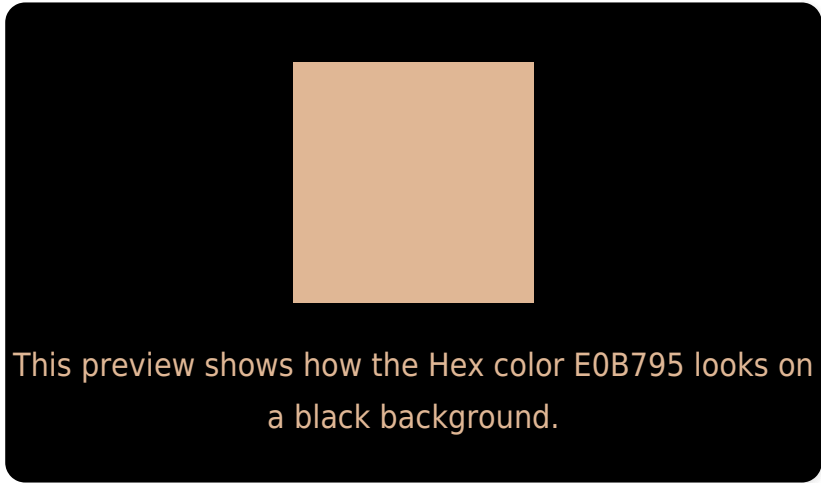
Large Text (above 18pt) WCAG AA × Fail

Any Text WCAG AA × Fail

Large Text (above 18pt) WCAG AAA × Fail

Any Text WCAG AAA × Fail

Black Background



Color Contrast Check

Large Text (above 18pt) WCAG AA ✓ Pass

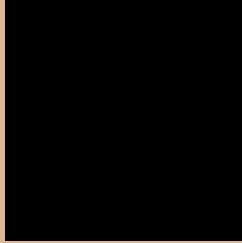
Any Text WCAG AA ✓ Pass

Large Text (above 18pt) WCAG AAA ✓ Pass

Any Text WCAG AAA ✓ Pass

If you want to check with other color combinations, try the [Color Contrast Checker](#).

Hex E0B795 Background



This preview shows how black text looks on a background with the Hex color E0B795.



This preview shows how white text looks on a background with the Hex color E0B795.

Color Blindness Simulation

Color vision deficiency is a very complex topic, and I could not describe the different causes any better than Wikipedia does, so if you want to learn more, you should check out their [article about color blindness](#).

Dichromacy



Original Color
E0B795

Protanopia
CBBF99

Deuteranopia
DFB795



Tritanopia
E4B1BF

Trichromacy



Monochromacy



CSS Examples

Text

The CSS property to change the color of the text to Hex E0B795 is called "color". The color property can be set on classes, ids or directly on the HTML element.

This example shows how text in the color #E0B795 looks like.

```
.text, #text, p{  
    color:#E0B795  
}
```

If you want to add a text shadow in that color use the text-shadow property, you can generate a text shadow directly with our [CSS Text Shadow Generator](#).

Here you see how black text with a 4 pixel #E0B795 colored shadow looks like.

```
.shadow{ text-shadow: 4px 4px 2px #E0B795
}
```

Border

The CSS property to change the border of an element to Hex E0B795 is called "border". The border property can be set on classes, ids or directly on the HTML element.

This example shows the color as border, it can be applied via the CSS property "border" or "border-color".

```
.border, #border, table{ border:4px solid
#E0B795 }
```

If only the border color should be changed use the property `border-color`.

```
.border{ border-color:#E0B795 }
```

If you want to add a box shadow in that color use:

Here you see how a box with a 4 pixel #E0B795 colored shadow looks like.

```
.boxshadow{ -moz-box-shadow:4px 4px 4px  
4px #E0B795; -webkit-box-shadow:4px 4px  
4px 4px #E0B795; box-shadow:4px 4px 4px  
4px #E0B795 }
```

Background

The CSS property to change the background color of an element to Hex E0B795 is called "background". The background property can be set on classes, ids or directly on the HTML element.

```
.background, #background, body{  
background:#E0B795 }
```

If only the background color should be changed can be used:

```
.background{ background-color:#E0B795 }
```

This example shows the color as background, it is applied via the CSS property "background".

To optimize and compress your CSS code, you can use our [online CSS compressor and optimizer](#) based on csstidy. If you want to create a linear or radial gradient as background or border, check our [CSS Gradient Generator](#).

Hey! You found this booklet interesting? Support Converting Colors with the new Membership Option!

The pro membership hides all ads, plus gives you double the colors in the color bucket, and more awesome pro features!

[Learn more, Memberships starting at \\$2.50/m!](#)

**Follow me
on Twitter!**

@ConvertingColor