

Converting Colors

Hex(E0B7A4)

Have a look what the booklet for
Hex(E0B7A4) contains.

Hex(E0B7A4)	3
<i>Conversions</i>	4
<i>Details</i>	6
<i>Harmonies</i>	11
<i>Previews</i>	23
<i>Color Blindness Simulation</i>	26
<i>CSS Examples</i>	29

Color

Hex(E0B7A4)

Conversions

Conversions Part 1

Format	Color
Hex	E0B7A4
RGB	224, 183, 164
RGB Percent	88%, 72%, 64%
CMY	0.1216, 0.2824, 0.3569
CMYK	0.00, 0.18, 0.27, 0.12
HSL	19°, 49%, 76%
HSV	19°, 27%, 88%
XYZ	54.3748, 52.3946, 42.3693
YIQ	193.0930, 30.5350, 2.7830

Conversions

Conversions Part 2

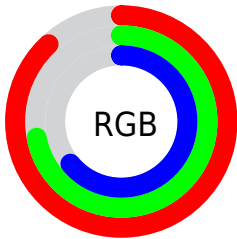
Format	Color
R _Y B	224, 192, 164
Decimal	14727076
CIE Lab	77.52, 11.98, 15.22
CIE LCh	78, 19.373, 51.784
Yxy	52.3946, 0.3646, 0.3513
Android (android.graphics.Color)	4292917156 (0xFFE0B7A4)
YUV	193.0930, -14.3428, 27.1054
Hunter-Lab	72.3841, 7.4166, 15.9641

Details

The Hex color **E0B7A4** is a light color, and the websafe version is hex **FFCCCC**. A complement of this color would be **A4CDE0**, and the grayscale version is **C1C1C1**.

A 20% lighter version of the original color is **FFEFD8**, and **A88270** is the 20% darker color. If you saturate the color by 10%, you get **E0A88E**, and if you desaturate by 10%, it is **E0C6BA**.

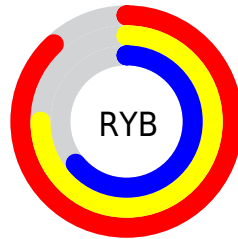
Distribution



Red (88%)

Green (72%)

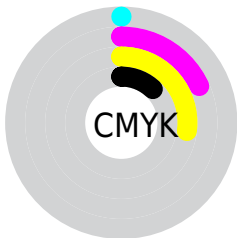
Blue (64%)



Red (88%)

Yellow (75%)

Blue (64%)

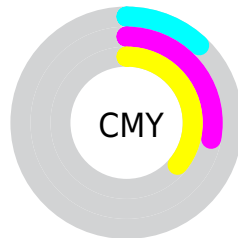


Cyan (0%)

Magenta (18%)

Yellow (27%)

Black (12%)



Cyan (12%)

Magenta (28%)

Yellow (36%)

Brightness & Saturation Gradients

These gradients show how the Hex color E0B7A4 changes by changing the brightness by 10 percent. The first figure shows a shift by +10% for each color and the second figure -10%.

Similar to the brightness gradients but the following saturation gradients show a change of the Hex color E0B7A4 by changing the saturation by 10% instead.

 E0B7A4

 E0B7A4

FFFFFF

 C49C8A

 FFEFDB

 A88270

 FFFFF7

 8D6958

 735140

 593A2A

 402416

 2A0F00

 030000

 000000

 E0B7A4

 E0B7A4

 E0A88E

 E0C6BA

 E09877

 E0D6D1

 E08961

 E0E5E7

 E07A4A

 E0F4FE

 E06A34

 E0FFFF

 E05B1E

 E04C07

 E04700

Harmonies

Analogous

The Analogous color harmony consists of three colors that are next to each other on the color wheel.



E5B3B3



E0B7A4



D2BD9C

Triad

The Triadic color harmony groups three colors that are evenly spaced from another and form a triangle on the color wheel.



E0B7A4



99CABA



BCBDE1

Complementary

The Complementary color scheme is a pair of colors which are on the opposite of each other on the color wheel.



E0B7A4



A4CDE0

Split Complementary

Split-complementary colors differ from the complementary color scheme. The scheme consists of three colors, the original color and two neighbors of the complement color.



A5C3E3



E0B7A4



90CACC

Square

The Square scheme is like the rectangle color scheme, but the four colors are evenly spaced on the color wheel.



E0B7A4



ABC7A9



94C7DB



D2B7D6

Rectangle

The Rectangle color scheme consists of four colors that form a rectangle on the color wheel.



E0B7A4



C6C19C



94C7DB



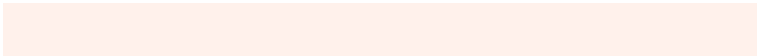
B5BFE2

Sweetspot

The Sweet Spot groups the original color and five complimentary colors.



E0B7A4



FFF1EB



E0A4CD



807773



000000



808080

Same Dimension

The Same Dimension uses a secret algorithm to generate beautiful new colors.



E0B7A4



FFC7AD



E0D4A4



706965



B03800



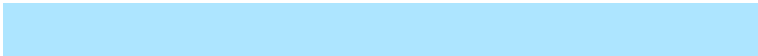
300F00

Inverse Universe

The Inverse Universe completely reimagines the original color for something new.



A4CDE0



ADE5FF



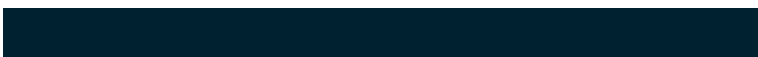
A4AFE0



656D70



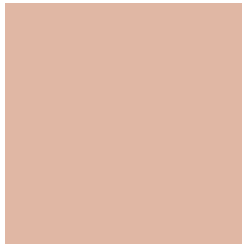
0078B0



002130

Previews

White Background



This preview shows how the Hex color E0B7A4 looks on a white background.

Color Contrast Check

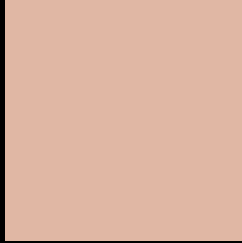
Large Text (above 18pt) WCAG AA × Fail

Any Text WCAG AA × Fail

Large Text (above 18pt) WCAG AAA × Fail

Any Text WCAG AAA × Fail

Black Background



This preview shows how the Hex color E0B7A4 looks on a black background.

Color Contrast Check

Large Text (above 18pt) WCAG AA ✓ Pass

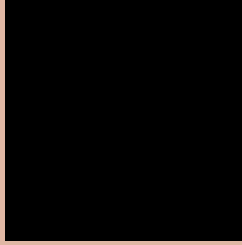
Any Text WCAG AA ✓ Pass

Large Text (above 18pt) WCAG AAA ✓ Pass

Any Text WCAG AAA ✓ Pass

If you want to check with other color combinations, try the [Color Contrast Checker](#).

Hex E0B7A4 Background



This preview shows how black text looks on a background with the Hex color E0B7A4.

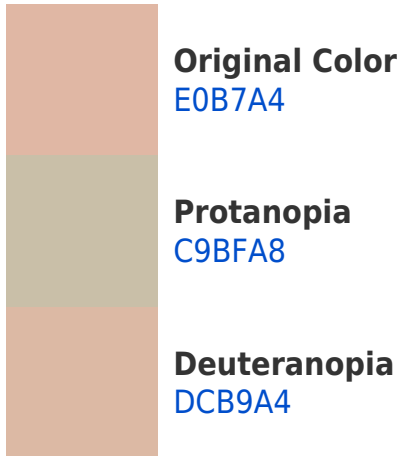


This preview shows how white text looks on a background with the Hex color E0B7A4.

Color Blindness Simulation

Color vision deficiency is a very complex topic, and I could not describe the different causes any better than Wikipedia does, so if you want to learn more, you should check out their [article about color blindness](#).

Dichromacy





Tritanopia
E3B3C1

Trichromacy



Original Color
E0B7A4

Protanomaly
D1BCA7

Deuteranomaly
DDB8A4

Tritanomaly
E2B4B6

Monochromacy



Original Color
E0B7A4

Achromatopsia
C1C1C1

Achromatomaly
CCDBB6

CSS Examples

Text

The CSS property to change the color of the text to Hex E0B7A4 is called "color". The color property can be set on classes, ids or directly on the HTML element.

This example shows how text in the color #E0B7A4 looks like.

```
.text, #text, p{  
    color:#E0B7A4  
}
```

If you want to add a text shadow in that color use the text-shadow property, you can generate a text shadow directly with our [CSS Text Shadow Generator](#).

Here you see how black text with a 4 pixel #E0B7A4 colored shadow looks like.

```
.shadow{ text-shadow: 4px 4px 2px #E0B7A4
}
```

Border

The CSS property to change the border of an element to Hex E0B7A4 is called "border". The border property can be set on classes, ids or directly on the HTML element.

This example shows the color as border, it can be applied via the CSS property "border" or "border-color".

```
.border, #border, table{ border:4px solid
#E0B7A4 }
```

If only the border color should be changed use the property `border-color`.

```
.border{ border-color:#E0B7A4 }
```

If you want to add a box shadow in that color use:

Here you see how a box with a 4 pixel #E0B7A4 colored shadow looks like.

```
.boxshadow{ -moz-box-shadow:4px 4px 4px  
4px #E0B7A4; -webkit-box-shadow:4px 4px  
4px 4px #E0B7A4; box-shadow:4px 4px 4px  
4px #E0B7A4 }
```

Background

The CSS property to change the background color of an element to Hex E0B7A4 is called "background". The background property can be set on classes, ids or directly on the HTML element.

```
.background, #background, body{  
background:#E0B7A4 }
```

If only the background color should be changed can be used:

```
.background{ background-color:#E0B7A4 }
```

This example shows the color as background, it is applied via the CSS property "background".

To optimize and compress your CSS code, you can use our [online CSS compressor and optimizer](#) based on csstidy. If you want to create a linear or radial gradient as background or border, check our [CSS Gradient Generator](#).

Hey! You found this booklet interesting? Support Converting Colors with the new Membership Option!

The pro membership hides all ads, plus gives you double the colors in the color bucket, and more awesome pro features!

[Learn more, Memberships starting at \\$2.50/m!](#)

**Follow me
on Twitter!**

@ConvertingColor