

Converting Colors

Hex(E0B8CD)

Have a look what the booklet for
Hex(E0B8CD) contains.

Hex(E0B8CD)	3
<i>Conversions</i>	4
<i>Details</i>	6
<i>Harmonies</i>	11
<i>Previews</i>	23
<i>Color Blindness Simulation</i>	26
<i>CSS Examples</i>	29

Color

Hex(E0B8CD)

Conversions

Conversions Part 1

Format	Color
Hex	E0B8CD
RGB	224, 184, 205
RGB Percent	88%, 72%, 80%
CMY	0.1216, 0.2784, 0.1961
CMYK	0.00, 0.18, 0.08, 0.12
HSL	328°, 39%, 80%
HSV	328°, 18%, 88%
XYZ	58.9004, 54.5361, 65.1797
YIQ	198.3540, 17.0990, 15.0110

Conversions

Conversions Part 2

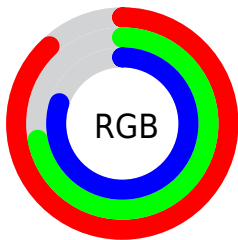
Format	Color
RYB	224, 184, 205
Decimal	14727373
CIELab	78.77, 17.78, -5.16
CIELCh	79, 18.509, 343.828
Yxy	54.5361, 0.3298, 0.3053
Android (android.graphics.Color)	4292917453 (0xFFE0B8CD)
YUV	198.3540, 3.2765, 22.4915
Hunter-Lab	73.8485, 13.1338, -0.6362

Details

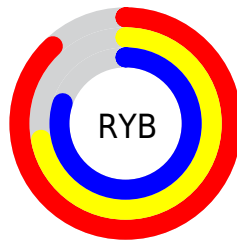
The Hex color **E0B8CD** is a light color, and the websafe version is hex **FFCCCC**. A complement of this color would be **B8E0CB**, and the grayscale version is **C6C6C6**.

A 20% lighter version of the original color is **FFF0FF**, and **A88397** is the 20% darker color. If you saturate the color by 10%, you get **E0A2C2**, and if you desaturate by 10%, it is **E0CED8**.

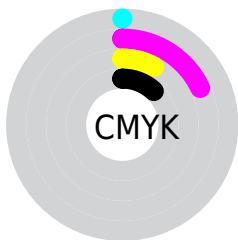
Distribution



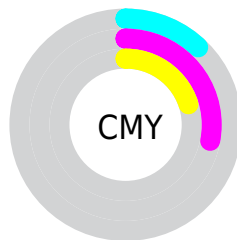
- Red (88%)
- Green (72%)
- Blue (80%)



- Red (88%)
- Yellow (72%)
- Blue (80%)



- Cyan (0%)
- Magenta (18%)
- Yellow (8%)
- Black (12%)



- Cyan (12%)
- Magenta (28%)
- Yellow (20%)

Brightness & Saturation Gradients

These gradients show how the Hex color E0B8CD changes by changing the brightness by 10 percent. The first figure shows a shift by +10% for each color and the second figure -10%.

Similar to the brightness gradients but the following saturation gradients show a change of the Hex color E0B8CD by changing the saturation by 10% instead.

 E0B8CD

 E0B8CD

FFFFFF

 C49DB2

 FFF0FF

 A88397

 8E697D

 745164

 5B3A4C

 432435

 2C0F20

 170008

 000000

 E0B8CD

 E0B8CD

 E0A2C2

 E0CED8

 E08BB8

 E0E5E2

 E075AD

 E0FBED

 E05EA2

 E0FFF8

 E04898

 E0FFFF

 E0328D

 E01B83

 E00578

 E00076

Harmonies

Analogous

The Analogous color harmony consists of three colors that are next to each other on the color wheel.



D0BCDC



E0B8CD



E7B7BB

Triad

The Triadic color harmony groups three colors that are evenly spaced from another and form a triangle on the color wheel.



E0B8CD



C8C4A2



97CBDA

Complementary

The Complementary color scheme is a pair of colors which are on the opposite of each other on the color wheel.



E0B8CD



B8E0CB

Split Complementary

Split-complementary colors differ from the complementary color scheme. The scheme consists of three colors, the original color and two neighbors of the complement color.



97CDCB



E0B8CD



B4C9AA

Square

The Square scheme is like the rectangle color scheme, but the four colors are evenly spaced on the color wheel.



E0B8CD



D9BFA2



A2CCB9



A5C7E4

Rectangle

The Rectangle color scheme consists of four colors that form a rectangle on the color wheel.



E0B8CD



E6B8B1



A2CCB9



96CCD5

Sweetspot

The Sweet Spot groups the original color and five complimentary colors.



E0B8CD



FFF2F9



CBB8E0



80787C



000000



808080

Same Dimension

The Same Dimension uses a secret algorithm to generate beautiful new colors.



E0B8CD



FFC9E6



E0B8B9



70656B



B0005C



300019

Inverse Universe

The Inverse Universe completely reimagines the original color for something new.



E0B8CD



FFC9E6



B8E0DF



70656B



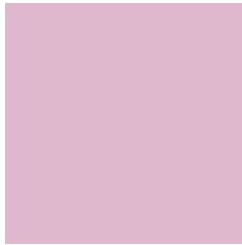
B0005C



300019

Previews

White Background



This preview shows how the Hex color E0B8CD looks on a white background.

Color Contrast Check

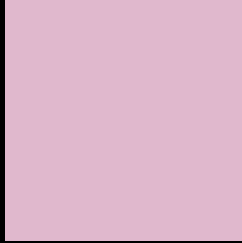
Large Text (above 18pt) WCAG AA × Fail

Any Text WCAG AA × Fail

Large Text (above 18pt) WCAG AAA × Fail

Any Text WCAG AAA × Fail

Black Background



This preview shows how the Hex color E0B8CD looks on a black background.

Color Contrast Check

Large Text (above 18pt) WCAG AA ✓ Pass

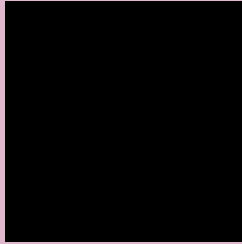
Any Text WCAG AA ✓ Pass

Large Text (above 18pt) WCAG AAA ✓ Pass

Any Text WCAG AAA ✓ Pass

If you want to check with other color combinations, try the [Color Contrast Checker](#).

Hex E0B8CD Background



This preview shows how black text looks on a background with the Hex color E0B8CD.

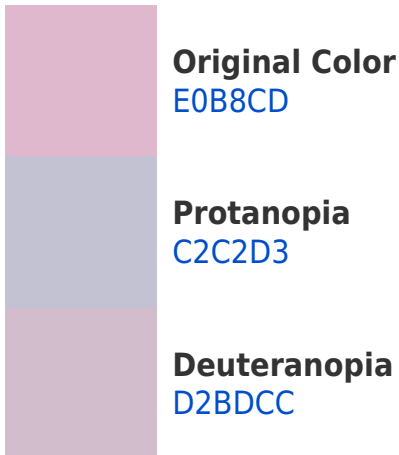


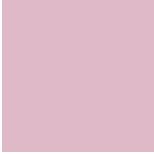
This preview shows how white text looks on a background with the Hex color E0B8CD.

Color Blindness Simulation

Color vision deficiency is a very complex topic, and I could not describe the different causes any better than Wikipedia does, so if you want to learn more, you should check out their [article about color blindness](#).

Dichromacy





Tritanopia
DFB9C7

Trichromacy



Original Color
E0B8CD

Protanomaly
CDBED1

Deuteranomaly
D7BBCC

Tritanomaly
DFB9C9

Monochromacy



Original Color
E0B8CD

Achromatopsia
C6C6C6

Achromatomaly
CFC1C9

CSS Examples

Text

The CSS property to change the color of the text to Hex E0B8CD is called "color". The color property can be set on classes, ids or directly on the HTML element.

This example shows how text in the color #E0B8CD looks like.

```
.text, #text, p{  
    color:#E0B8CD  
}
```

If you want to add a text shadow in that color use the text-shadow property, you can generate a text shadow directly with our [CSS Text Shadow Generator](#).

Here you see how black text with a 4 pixel #E0B8CD colored shadow looks like.

```
.shadow{ text-shadow: 4px 4px 2px #E0B8CD
}
```

Border

The CSS property to change the border of an element to Hex E0B8CD is called "border". The border property can be set on classes, ids or directly on the HTML element.

This example shows the color as border, it can be applied via the CSS property "border" or "border-color".

```
.border, #border, table{ border:4px solid
#E0B8CD }
```

If only the border color should be changed use the property `border-color`.

```
.border{ border-color:#E0B8CD }
```

If you want to add a box shadow in that color use:

Here you see how a box with a 4 pixel #E0B8CD colored shadow looks like.

```
.boxshadow{ -moz-box-shadow:4px 4px 4px  
4px #E0B8CD; -webkit-box-shadow:4px 4px  
4px 4px #E0B8CD; box-shadow:4px 4px 4px  
4px #E0B8CD }
```

Background

The CSS property to change the background color of an element to Hex E0B8CD is called "background". The background property can be set on classes, ids or directly on the HTML element.

```
.background, #background, body{  
background:#E0B8CD }
```

If only the background color should be changed can be used:

```
.background{ background-color:#E0B8CD }
```

This example shows the color as background, it is applied via the CSS property "background".

To optimize and compress your CSS code, you can use our [online CSS compressor and optimizer](#) based on csstidy. If you want to create a linear or radial gradient as background or border, check our [CSS Gradient Generator](#).

Hey! You found this booklet interesting? Support Converting Colors with the new Membership Option!

The pro membership hides all ads, plus gives you double the colors in the color bucket, and more awesome pro features!

[Learn more, Memberships starting at \\$2.50/m!](#)

**Follow me
on Twitter!**

@ConvertingColor