

Converting Colors

Hex(E0B9AA)

Have a look what the booklet for
Hex(E0B9AA) contains.

Hex(E0B9AA)	3
<i>Conversions</i>	4
<i>Details</i>	6
<i>Harmonies</i>	11
<i>Previews</i>	23
<i>Color Blindness Simulation</i>	26
<i>CSS Examples</i>	29

Color

Hex(E0B9AA)

Conversions

Conversions Part 1

Format	Color
Hex	E0B9AA
RGB	224, 185, 170
RGB Percent	88%, 73%, 67%
CMY	0.1216, 0.2745, 0.3333
CMYK	0.00, 0.17, 0.24, 0.12
HSL	17°, 47%, 77%
HSV	17°, 24%, 88%
XYZ	55.3451, 53.4475, 45.4296
YIQ	194.9510, 28.0590, 3.6030

Conversions

Conversions Part 2

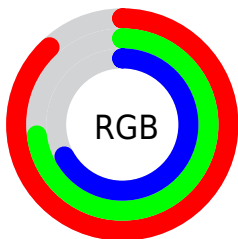
Format	Color
R_{YB}	224, 191, 170
Decimal	14727594
CIE _{Lab}	78.14, 11.76, 12.86
CIE _{LCh}	78, 17.424, 47.565
Yxy	53.4475, 0.3589, 0.3466
Android (android.graphics.Color)	4292917674 (0xFFE0B9AA)
YUV	194.9510, -12.3008, 25.4760
Hunter-Lab	73.1078, 7.1920, 14.3323

Details

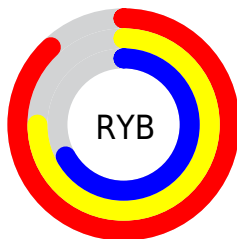
The Hex color **E0B9AA** is a light color, and the websafe version is hex **FFCCCC**. A complement of this color would be **AAD1E0**, and the grayscale version is **C3C3C3**.

A 20% lighter version of the original color is **FFF1E1**, and **A88476** is the 20% darker color. If you saturate the color by 10%, you get **E0A994**, and if you desaturate by 10%, it is **E0C9C0**.

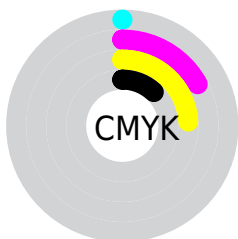
Distribution



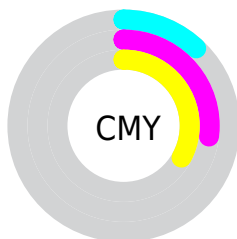
- Red (88%)
- Green (73%)
- Blue (67%)



- Red (88%)
- Yellow (75%)
- Blue (67%)



- Cyan (0%)
- Magenta (17%)
- Yellow (24%)
- Black (12%)



- Cyan (12%)
- Magenta (27%)
- Yellow (33%)

Brightness & Saturation Gradients

These gradients show how the Hex color E0B9AA changes by changing the brightness by 10 percent. The first figure shows a shift by +10% for each color and the second figure -10%.

Similar to the brightness gradients but the following saturation gradients show a change of the Hex color E0B9AA by changing the saturation by 10% instead.

 E0B9AA

 E0B9AA

FFFFFF

 C49E90

 FFF1E1

 A88476

FFFFFFE

 8D6B5D

 735246

 5A3B2F

 41251A

 2B1100

 0A0000

 000000

 E0B9AA

 E0B9AA

 E0A994

 E0C9C0

 E0997D

 E0D9D7

 E08867

 E0EAED

 E07850

 E0FAFF

 E0683A

 E0FFFF

 E05824

 E0480D

 E03E00

Harmonies

Analogous

The Analogous color harmony consists of three colors that are next to each other on the color wheel.



E4B6B8



E0B9AA



D5BEA2

Triad

The Triadic color harmony groups three colors that are evenly spaced from another and form a triangle on the color wheel.



E0B9AA



A1CABA



BCBFEO

Complementary

The Complementary color scheme is a pair of colors which are on the opposite of each other on the color wheel.



E0B9AA



AAD1E0

Split Complementary

Split-complementary colors differ from the complementary color scheme. The scheme consists of three colors, the original color and two neighbors of the complement color.



A7C5E0



E0B9AA



97CBCA

Square

The Square scheme is like the rectangle color scheme, but the four colors are evenly spaced on the color wheel.



E0B9AA



B1C8AB



9AC9D8



D0BAD7

Rectangle

The Rectangle color scheme consists of four colors that form a rectangle on the color wheel.



E0B9AA



CAC1A1



9AC9D8



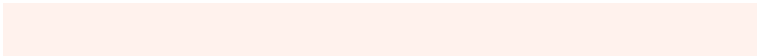
B5C1E1

Sweetspot

The Sweet Spot groups the original color and five complimentary colors.



E0B9AA



FFF2ED



E0AAD2



807875



000000



808080

Same Dimension

The Same Dimension uses a secret algorithm to generate beautiful new colors.



E0B9AA



FFCAB5



E0D3AA



706865



B03100



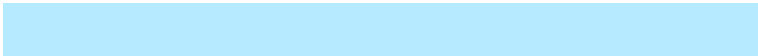
300D00

Inverse Universe

The Inverse Universe completely reimagines the original color for something new.



AAD1E0



B5EAFF



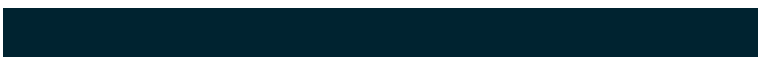
AAB7E0



656D70



007FB0



002330

Previews

White Background



This preview shows how the Hex color E0B9AA looks on a white background.

Color Contrast Check

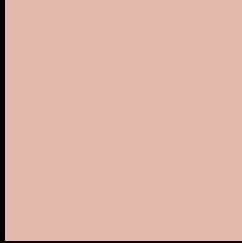
Large Text (above 18pt) WCAG AA × Fail

Any Text WCAG AA × Fail

Large Text (above 18pt) WCAG AAA × Fail

Any Text WCAG AAA × Fail

Black Background



This preview shows how the Hex color E0B9AA looks on a black background.

Color Contrast Check

Large Text (above 18pt) WCAG AA ✓ Pass

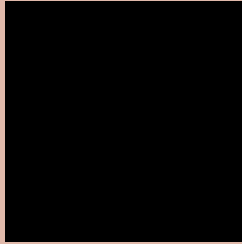
Any Text WCAG AA ✓ Pass

Large Text (above 18pt) WCAG AAA ✓ Pass

Any Text WCAG AAA ✓ Pass

If you want to check with other color combinations, try the [Color Contrast Checker](#).

Hex E0B9AA Background



This preview shows how black text looks on a background with the Hex color E0B9AA.

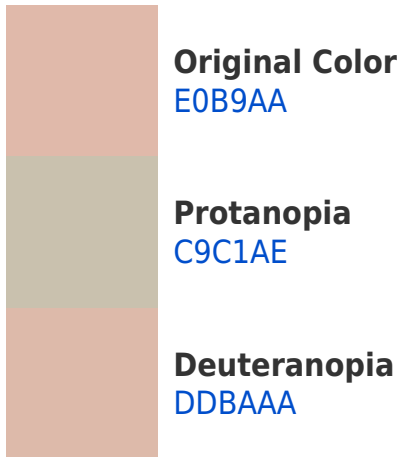


This preview shows how white text looks on a background with the Hex color E0B9AA.

Color Blindness Simulation

Color vision deficiency is a very complex topic, and I could not describe the different causes any better than Wikipedia does, so if you want to learn more, you should check out their [article about color blindness](#).

Dichromacy





Tritanopia
E3B5C3

Trichromacy



Original Color
E0B9AA

Protanomaly
D1BEAD

Deuteranomaly
DEBAAA

Tritanomaly
E2B6BA

Monochromacy



Original Color
E0B9AA

Achromatopsia
C3C3C3

Achromatomaly
CEBFBA

CSS Examples

Text

The CSS property to change the color of the text to Hex E0B9AA is called "color". The color property can be set on classes, ids or directly on the HTML element.

This example shows how text in the color #E0B9AA looks like.

```
.text, #text, p{  
    color:#E0B9AA  
}
```

If you want to add a text shadow in that color use the text-shadow property, you can generate a text shadow directly with our [CSS Text Shadow Generator](#).

Here you see how black text with a 4 pixel #E0B9AA colored shadow looks like.

```
.shadow{ text-shadow: 4px 4px 2px #E0B9AA
}
```

Border

The CSS property to change the border of an element to Hex E0B9AA is called "border". The border property can be set on classes, ids or directly on the HTML element.

This example shows the color as border, it can be applied via the CSS property "border" or "border-color".

```
.border, #border, table{ border:4px solid
#E0B9AA }
```

If only the border color should be changed use the property `border-color`.

```
.border{ border-color:#E0B9AA }
```

If you want to add a box shadow in that color use:

Here you see how a box with a 4 pixel #E0B9AA colored shadow looks like.

```
.boxshadow{ -moz-box-shadow:4px 4px 4px  
4px #E0B9AA; -webkit-box-shadow:4px 4px  
4px 4px #E0B9AA; box-shadow:4px 4px 4px  
4px #E0B9AA }
```

Background

The CSS property to change the background color of an element to Hex E0B9AA is called "background". The background property can be set on classes, ids or directly on the HTML element.

```
.background, #background, body{  
background:#E0B9AA }
```

If only the background color should be changed can be used:

```
.background{ background-color:#E0B9AA }
```

This example shows the color as background, it is applied via the CSS property "background".

To optimize and compress your CSS code, you can use our [online CSS compressor and optimizer](#) based on csstidy. If you want to create a linear or radial gradient as background or border, check our [CSS Gradient Generator](#).

Hey! You found this booklet interesting? Support Converting Colors with the new Membership Option!

The pro membership hides all ads, plus gives you double the colors in the color bucket, and more awesome pro features!

[Learn more, Memberships starting at \\$2.50/m!](#)

**Follow me
on Twitter!**

@ConvertingColor