

Converting Colors

Hex(E0B9C7)

Have a look what the booklet for
Hex(E0B9C7) contains.

Hex(E0B9C7)	3
<i>Conversions</i>	4
<i>Details</i>	6
<i>Harmonies</i>	11
<i>Previews</i>	23
<i>Color Blindness Simulation</i>	26
<i>CSS Examples</i>	29

Color

Hex(E0B9C7)

Conversions

Conversions Part 1

Format	Color
Hex	E0B9C7
RGB	224, 185, 199
RGB Percent	88%, 73%, 78%
CMY	0.1216, 0.2745, 0.2196
CMYK	0.00, 0.17, 0.11, 0.12
HSL	338°, 39%, 80%
HSV	338°, 17%, 88%
XYZ	58.3982, 54.6687, 61.5070
YIQ	198.2570, 18.7500, 12.6220

Conversions

Conversions Part 2

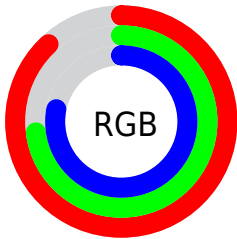
Format	Color
R_{YB}	224, 185, 199
Decimal	14727623
CIE _{Lab}	78.85, 16.23, -1.80
CIE _{LCh}	79, 16.329, 353.688
Yxy	54.6687, 0.3345, 0.3132
Android (android.graphics.Color)	4292917703 (0xFFE0B9C7)
YUV	198.2570, 0.3663, 22.5766
Hunter-Lab	73.9383, 11.5915, 2.4353

Details

The Hex color **E0B9C7** is a light color, and the websafe version is hex **FFCCCC**. A complement of this color would be **B9E0D2**, and the grayscale version is **C6C6C6**.

A 20% lighter version of the original color is **FFF1FF**, and **A88491** is the 20% darker color. If you saturate the color by 10%, you get **E0A3B9**, and if you desaturate by 10%, it is **E0CFD5**.

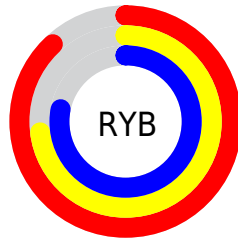
Distribution



Red (88%)

Green (73%)

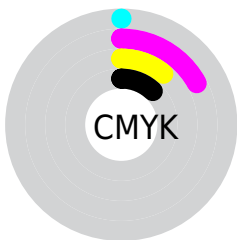
Blue (78%)



Red (88%)

Yellow (73%)

Blue (78%)

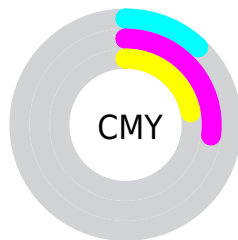


Cyan (0%)

Magenta (17%)

Yellow (11%)

Black (12%)



Cyan (12%)

Magenta (27%)

Yellow (22%)

Brightness & Saturation Gradients

These gradients show how the Hex color E0B9C7 changes by changing the brightness by 10 percent. The first figure shows a shift by +10% for each color and the second figure -10%.

Similar to the brightness gradients but the following saturation gradients show a change of the Hex color E0B9C7 by changing the saturation by 10% instead.

 E0B9C7

 E0B9C7

FFFFFF

 C49EAC

 FFF1FF

 A88491

 8E6A78

 74525F

 5B3B47

 432531

 2C101C

 180001

 000000

 E0B9C7

 E0B9C7

 E0A3B9

 E0CFD5

 E08CAA

 E0E6E4

 E0769C

 E0FCF2

 E05F8E

 E0FFFF

 E0497F

 E03371

 E01C62

 E00654

 E00050

Harmonies

Analogous

The Analogous color harmony consists of three colors that are next to each other on the color wheel.



D4BCD5



E0B9C7



E4B9B8

Triad

The Triadic color harmony groups three colors that are evenly spaced from another and form a triangle on the color wheel.



E0B9C7



C2C6A7



A0CADB

Complementary

The Complementary color scheme is a pair of colors which are on the opposite of each other on the color wheel.



E0B9C7



B9E0D2

Split Complementary

Split-complementary colors differ from the complementary color scheme. The scheme consists of three colors, the original color and two neighbors of the complement color.



9CCCCF



E0B9C7



B1CAB1

Square

The Square scheme is like the rectangle color scheme, but the four colors are evenly spaced on the color wheel.



E0B9C7



D3C1A5



A2CCBF



AFC5E1

Rectangle

The Rectangle color scheme consists of four colors that form a rectangle on the color wheel.



E0B9C7



E1BBAF



A2CCBF



9DCBD8

Sweetspot

The Sweet Spot groups the original color and five complimentary colors.



E0B9C7



FFF2F7



D2B9E0



80787B



000000



808080

Same Dimension

The Same Dimension uses a secret algorithm to generate beautiful new colors.



E0B9C7



FFC9DD



E0BEB9



706569



B0003F



300011

Inverse Universe

The Inverse Universe completely reimagines the original color for something new.



E0B9C7



FFC9DD



B9DBE0



706569



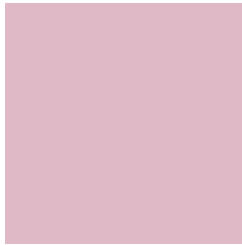
B0003F



300011

Previews

White Background



This preview shows how the Hex color E0B9C7 looks on a white background.

Color Contrast Check

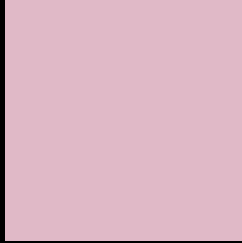
Large Text (above 18pt) WCAG AA × Fail

Any Text WCAG AA × Fail

Large Text (above 18pt) WCAG AAA × Fail

Any Text WCAG AAA × Fail

Black Background



This preview shows how the Hex color E0B9C7 looks on a black background.

Color Contrast Check

Large Text (above 18pt) WCAG AA ✓ Pass

Any Text WCAG AA ✓ Pass

Large Text (above 18pt) WCAG AAA ✓ Pass

Any Text WCAG AAA ✓ Pass

If you want to check with other color combinations, try the [Color Contrast Checker](#).

Hex E0B9C7 Background



This preview shows how black text looks on a background with the Hex color E0B9C7.



This preview shows how white text looks on a background with the Hex color E0B9C7.

Color Blindness Simulation

Color vision deficiency is a very complex topic, and I could not describe the different causes any better than Wikipedia does, so if you want to learn more, you should check out their [article about color blindness](#).

Dichromacy



Original Color
E0B9C7

Protanopia
C4C2CC

Deuteranopia
D5BDC6



Tritanopia
E0B9C7

Trichromacy



Original Color
E0B9C7

Protanomaly
CEBFCA

Deuteranomaly
D9BCC6

Tritanomaly
E0B9C7

Monochromacy



Original Color
E0B9C7

Achromatopsia
C6C6C6

Achromatomaly
CFC1C6

CSS Examples

Text

The CSS property to change the color of the text to Hex E0B9C7 is called "color". The color property can be set on classes, ids or directly on the HTML element.

This example shows how text in the color #E0B9C7 looks like.

```
.text, #text, p{  
    color:#E0B9C7  
}
```

If you want to add a text shadow in that color use the text-shadow property, you can generate a text shadow directly with our [CSS Text Shadow Generator](#).

Here you see how black text with a 4 pixel #E0B9C7 colored shadow looks like.

```
.shadow{ text-shadow: 4px 4px 2px #E0B9C7
}
```

Border

The CSS property to change the border of an element to Hex E0B9C7 is called "border". The border property can be set on classes, ids or directly on the HTML element.

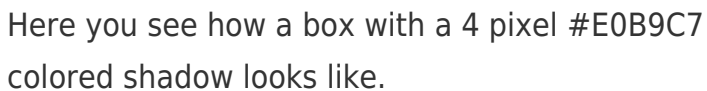
This example shows the color as border, it can be applied via the CSS property "border" or "border-color".

```
.border, #border, table{ border:4px solid
#E0B9C7 }
```

If only the border color should be changed use the property `border-color`.

```
.border{ border-color:#E0B9C7 }
```

If you want to add a box shadow in that color use:



Here you see how a box with a 4 pixel #E0B9C7 colored shadow looks like.

```
.boxshadow{ -moz-box-shadow:4px 4px 4px  
4px #E0B9C7; -webkit-box-shadow:4px 4px  
4px 4px #E0B9C7; box-shadow:4px 4px 4px  
4px #E0B9C7 }
```

Background

The CSS property to change the background color of an element to Hex E0B9C7 is called "background". The background property can be set on classes, ids or directly on the HTML element.

```
.background, #background, body{  
background:#E0B9C7 }
```

If only the background color should be changed can be used:

```
.background{ background-color:#E0B9C7 }
```

This example shows the color as background, it is applied via the CSS property "background".

To optimize and compress your CSS code, you can use our [online CSS compressor and optimizer](#) based on csstidy. If you want to create a linear or radial gradient as background or border, check our [CSS Gradient Generator](#).

Hey! You found this booklet interesting? Support Converting Colors with the new Membership Option!

The pro membership hides all ads, plus gives you double the colors in the color bucket, and more awesome pro features!

[Learn more, Memberships starting at \\$2.50/m!](#)

**Follow me
on Twitter!**

@ConvertingColor