

# Converting Colors

Hex(E0BAA9)

Have a look what the booklet for  
Hex(E0BAA9) contains.

<b>Hex(E0BAA9)</b> .....	3
<b><i>Conversions</i></b> .....	4
<b><i>Details</i></b> .....	6
<b><i>Harmonies</i></b> .....	11
<b><i>Previews</i></b> .....	23
<b><i>Color Blindness Simulation</i></b> .....	26
<b><i>CSS Examples</i></b> .....	29

# **Color**

**Hex(E0BAA9)**

# Conversions

## Conversions Part 1

Format	Color
Hex	E0BAA9
RGB	224, 186, 169
RGB Percent	88%, 73%, 66%
CMY	0.1216, 0.2706, 0.3373
CMYK	0.00, 0.17, 0.25, 0.12
HSL	19°, 47%, 77%
HSV	19°, 25%, 88%
XYZ	55.4608, 53.8297, 45.0032
YIQ	195.4240, 28.1050, 2.7690

# Conversions

## Conversions Part 2

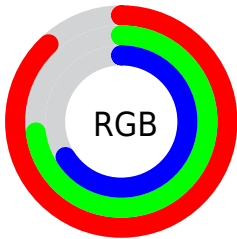
Format	Color
R <sub>Y</sub> B	224, 194, 169
Decimal	14727849
CIE Lab	78.36, 11.08, 13.71
CIE LCh	78, 17.633, 51.059
Yxy	53.8297, 0.3594, 0.3489
Android (android.graphics.Color)	4292917929 (0xFFE0BAA9)
YUV	195.4240, -13.0270, 25.0612
Hunter-Lab	73.3687, 6.5363, 14.9906

# Details

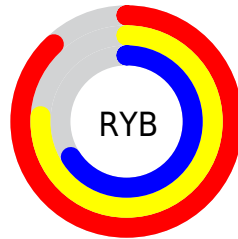
The Hex color **E0BAA9** is a light color, and the websafe version is hex **FFCCCC**. A complement of this color would be **A9CFE0**, and the grayscale version is **C4C4C4**.

A 20% lighter version of the original color is **FFF2E0**, and **A88575** is the 20% darker color. If you saturate the color by 10%, you get **E0AB93**, and if you desaturate by 10%, it is **E0C9BF**.

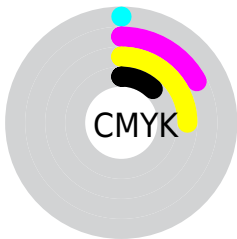
# Distribution



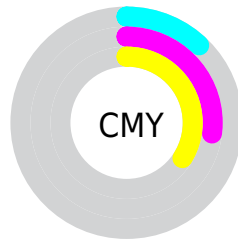
- Red (88%)
- Green (73%)
- Blue (66%)



- Red (88%)
- Yellow (76%)
- Blue (66%)



- Cyan (0%)
- Magenta (17%)
- Yellow (25%)
- Black (12%)



- Cyan (12%)
- Magenta (27%)
- Yellow (34%)

# Brightness & Saturation Gradients

These gradients show how the Hex color E0BAA9 changes by changing the brightness by 10 percent. The first figure shows a shift by +10% for each color and the second figure -10%.

Similar to the brightness gradients but the following saturation gradients show a change of the Hex color E0BAA9 by changing the saturation by 10% instead.



 E0BAA9

 E0BAA9

FFFFFF

 C49F8F

 FFF2E0

 A88575

FFFFFFD

 8D6C5C

 735345

 5A3C2E

 412619

 2B1200

 0A0000

 000000

 E0BAA9

 E0BAA9

 E0AB93

 E0C9BF

 E09B7C

 E0D9D6

 E08C66

 E0E8EC

 E07C4F

 E0F8FF

 E06D39

 E0FFFF

 E05D23

 E04E0C

 E04500

# Harmonies

## Analogous

The Analogous color harmony consists of three colors that are next to each other on the color wheel.



E5B7B7



E0BAA9



D4BFA2

# Triad

The Triadic color harmony groups three colors that are evenly spaced from another and form a triangle on the color wheel.



E0BAA9



9FCBBC



BFBFEO

# Complementary

The Complementary color scheme is a pair of colors which are on the opposite of each other on the color wheel.



E0BAA9



A9CFE0

# Split Complementary

Split-complementary colors differ from the complementary color scheme. The scheme consists of three colors, the original color and two neighbors of the complement color.



AAC5E2



E0BAA9



97CBCD

# Square

The Square scheme is like the rectangle color scheme, but the four colors are evenly spaced on the color wheel.



E0BAA9



B0C9AD



9BC9DB



D2BAD7

# Rectangle

The Rectangle color scheme consists of four colors that form a rectangle on the color wheel.



E0BAA9



C9C3A2



9BC9DB



B8C1E2



# Sweetspot

The Sweet Spot groups the original color and five complimentary colors.



E0BAA9



FFF3ED



E0A9D0



807875



000000



808080



# Same Dimension

The Same Dimension uses a secret algorithm to generate beautiful new colors.



E0BAA9



FFCCB5



E0D5A9



706865



B03600



300F00

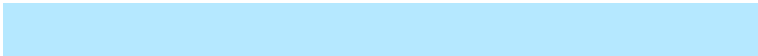


# Inverse Universe

The Inverse Universe completely reimagines the original color for something new.



A9CFE0



B5E8FF



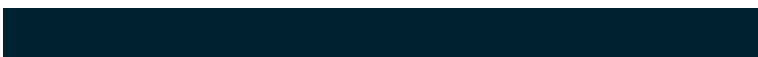
A9B4E0



656D70



007AB0



002130



# Previews

## White Background



This preview shows how the Hex color E0BAA9 looks on a white background.

## Color Contrast Check

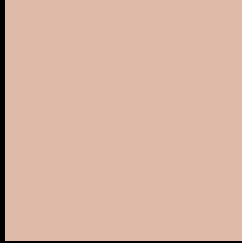
Large Text (above 18pt) WCAG AA × Fail

Any Text WCAG AA × Fail

Large Text (above 18pt) WCAG AAA × Fail

Any Text WCAG AAA × Fail

# Black Background



This preview shows how the Hex color E0BAA9 looks on a black background.

## Color Contrast Check

Large Text (above 18pt) WCAG AA ✓ Pass

Any Text WCAG AA ✓ Pass

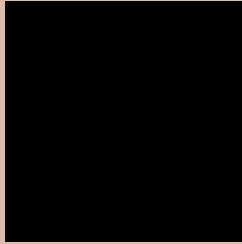
Large Text (above 18pt) WCAG AAA ✓ Pass

Any Text WCAG AAA ✓ Pass

If you want to check with other color combinations, try the [Color Contrast Checker](#).



## Hex E0BAA9 Background



This preview shows how black text looks on a background with the Hex color E0BAA9.

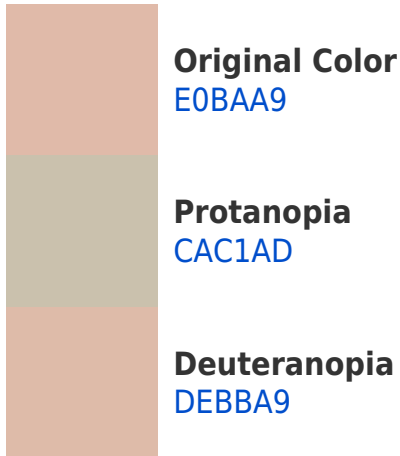


This preview shows how white text looks on a background with the Hex color E0BAA9.

# Color Blindness Simulation

Color vision deficiency is a very complex topic, and I could not describe the different causes any better than Wikipedia does, so if you want to learn more, you should check out their [article about color blindness](#).

## Dichromacy





**Tritanopia**  
E3B6C4

# Trichromacy



**Original Color**  
E0BAA9

**Protanomaly**  
D2BEAC

**Deuteranomaly**  
DFBBA9

**Tritanomaly**  
E2B7BA

# Monochromacy



**Original Color**  
E0BAA9

**Achromatopsia**  
C3C3C3

**Achromatomaly**  
CEC0BA

# CSS Examples

## Text

The CSS property to change the color of the text to Hex E0BAA9 is called "color". The color property can be set on classes, ids or directly on the HTML element.

This example shows how text in the color #E0BAA9 looks like.

```
.text, #text, p{  
    color:#E0BAA9  
}
```

If you want to add a text shadow in that color use the text-shadow property, you can generate a text shadow directly with our [CSS Text Shadow Generator](#).

Here you see how black text with a 4 pixel #E0BAA9 colored shadow looks like.

```
.shadow{ text-shadow: 4px 4px 2px #E0BAA9
}
```

## Border

The CSS property to change the border of an element to Hex E0BAA9 is called "border". The border property can be set on classes, ids or directly on the HTML element.

This example shows the color as border, it can be applied via the CSS property "border" or "border-color".

```
.border, #border, table{ border:4px solid
#E0BAA9 }
```

If only the border color should be changed use the property `border-color`.

```
.border{ border-color:#E0BAA9 }
```

If you want to add a box shadow in that color use:

Here you see how a box with a 4 pixel #E0BAA9 colored shadow looks like.

```
.boxshadow{ -moz-box-shadow:4px 4px 4px  
4px #E0BAA9; -webkit-box-shadow:4px 4px  
4px 4px #E0BAA9; box-shadow:4px 4px 4px  
4px #E0BAA9 }
```

# Background

The CSS property to change the background color of an element to Hex E0BAA9 is called "background". The background property can be set on classes, ids or directly on the HTML element.

```
.background, #background, body{  
background:#E0BAA9 }
```

If only the background color should be changed can be used:

```
.background{ background-color:#E0BAA9 }
```

This example shows the color as background, it is applied via the CSS property "background".

To optimize and compress your CSS code, you can use our [online CSS compressor and optimizer](#) based on csstidy. If you want to create a linear or radial gradient as background or border, check our [CSS Gradient Generator](#).



Hey! You found this booklet interesting? Support Converting Colors with the new Membership Option!

The pro membership hides all ads, plus gives you double the colors in the color bucket, and more awesome pro features!

**[Learn more, Memberships starting at \\$2.50/m!](#)**

**Follow me  
on Twitter!**

@ConvertingColor