

Converting Colors

Hex(E0BBB8)

Have a look what the booklet for
Hex(E0BBB8) contains.

Hex(E0BBB8)	3
<i>Conversions</i>	4
<i>Details</i>	6
<i>Harmonies</i>	11
<i>Previews</i>	23
<i>Color Blindness Simulation</i>	26
<i>CSS Examples</i>	29

Color

Hex(E0BBB8)

Conversions

Conversions Part 1

Format	Color
Hex	E0BBB8
RGB	224, 187, 184
RGB Percent	88%, 73%, 72%
CMY	0.1216, 0.2667, 0.2784
CMYK	0.00, 0.17, 0.18, 0.12
HSL	4°, 39%, 80%
HSV	4°, 18%, 88%
XYZ	57.1625, 54.8486, 52.9215
YIQ	197.7210, 23.0150, 6.9110

Conversions

Conversions Part 2

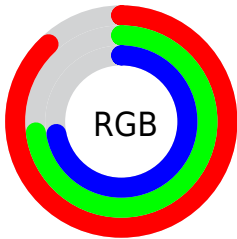
Format	Color
RYB	224, 187, 184
Decimal	14728120
CIELab	78.95, 12.76, 6.47
CIElCh	79, 14.307, 26.865
Yxy	54.8486, 0.3466, 0.3326
Android (android.graphics.Color)	4292918200 (0xFFE0BBB8)
YUV	197.7210, -6.7645, 23.0467
Hunter-Lab	74.0599, 8.1691, 9.4746

Details

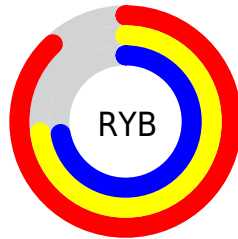
The Hex color **E0BBB8** is a light color, and the websafe version is hex **FFCCCC**. A complement of this color would be **B8DDE0**, and the grayscale version is **C6C6C6**.

A 20% lighter version of the original color is **FFF3F0**, and **A88683** is the 20% darker color. If you saturate the color by 10%, you get **E0A6A2**, and if you desaturate by 10%, it is **E0D0CE**.

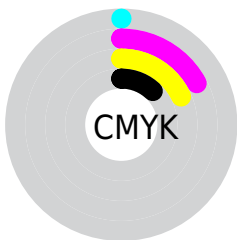
Distribution



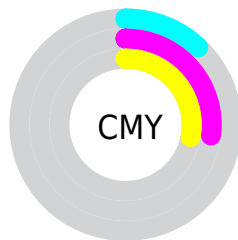
- Red (88%)
- Green (73%)
- Blue (72%)



- Red (88%)
- Yellow (73%)
- Blue (72%)



- Cyan (0%)
- Magenta (17%)
- Yellow (18%)
- Black (12%)



- Cyan (12%)
- Magenta (27%)
- Yellow (28%)

Brightness & Saturation Gradients

These gradients show how the Hex color E0BBB8 changes by changing the brightness by 10 percent. The first figure shows a shift by +10% for each color and the second figure -10%.

Similar to the brightness gradients but the following saturation gradients show a change of the Hex color E0BBB8 by changing the saturation by 10% instead.

 E0BBB8

 E0BBB8

FFFFFF

 C4A09D

 FFF3F0

 A88683

 8E6C6A

 745452

 5A3D3B

 422725

 2B1210

 130000

 000000

 E0BBB8

 E0BBB8

 E0A6A2

 E0D0CE

 E0928B

 E0E4E5

 E07D75

 E0F9FB

 E0685E

 E0FFFF

 E05348

 E03F32

 E02A1B

 E01505

 E01100

Harmonies

Analogous

The Analogous color harmony consists of three colors that are next to each other on the color wheel.



DEBBC5



E0BBB8



DBBEAE

Triad

The Triadic color harmony groups three colors that are evenly spaced from another and form a triangle on the color wheel.



E0BBB8



B2CAB5



B4C5DE

Complementary

The Complementary color scheme is a pair of colors which are on the opposite of each other on the color wheel.



E0BBB8



B8DDE0

Split Complementary

Split-complementary colors differ from the complementary color scheme. The scheme consists of three colors, the original color and two neighbors of the complement color.



A6C9D9



E0BBB8



A6CBC2

Square

The Square scheme is like the rectangle color scheme, but the four colors are evenly spaced on the color wheel.



E0BBB8



C1C6AC



A1CBCF



C4C1DB

Rectangle

The Rectangle color scheme consists of four colors that form a rectangle on the color wheel.



E0BBB8



D4C1AA



A1CBCF



AEC6DD

Sweetspot

The Sweet Spot groups the original color and five complimentary colors.



E0BBB8



FFF3F2



E0B8DD



807878



000000



808080

Same Dimension

The Same Dimension uses a secret algorithm to generate beautiful new colors.



E0BBB8



FFCDC9



E0CFB8



706665



B00D00



300400

Inverse Universe

The Inverse Universe completely reimagines the original color for something new.



B8DDE0



C9FBFF



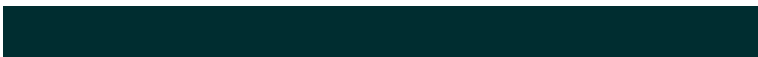
B8C9E0



656F70



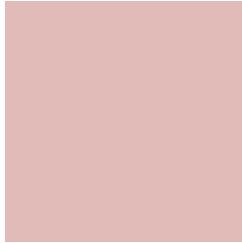
00A3B0



002D30

Previews

White Background



This preview shows how the Hex color E0BBB8 looks on a white background.

Color Contrast Check

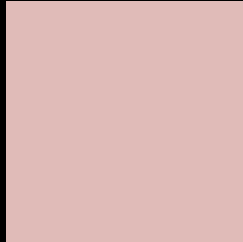
Large Text (above 18pt) WCAG AA × Fail

Any Text WCAG AA × Fail

Large Text (above 18pt) WCAG AAA × Fail

Any Text WCAG AAA × Fail

Black Background



This preview shows how the Hex color E0BBB8 looks on a black background.

Color Contrast Check

Large Text (above 18pt) WCAG AA ✓ Pass

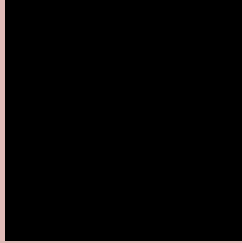
Any Text WCAG AA ✓ Pass

Large Text (above 18pt) WCAG AAA ✓ Pass

Any Text WCAG AAA ✓ Pass

If you want to check with other color combinations, try the [Color Contrast Checker](#).

Hex E0BBB8 Background



This preview shows how black text looks on a background with the Hex color E0BBB8.

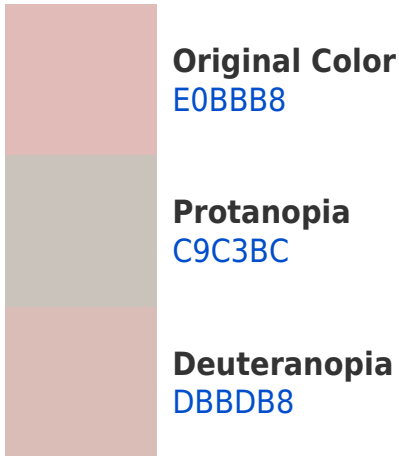


This preview shows how white text looks on a background with the Hex color E0BBB8.

Color Blindness Simulation

Color vision deficiency is a very complex topic, and I could not describe the different causes any better than Wikipedia does, so if you want to learn more, you should check out their [article about color blindness](#).

Dichromacy





Tritanopia
E2B9C7

Trichromacy



Original Color
E0BBB8

Protanomaly
D1C0BB

Deuteranomaly
DDBC88

Tritanomaly
E1BAC2

Monochromacy



Original Color
E0BBB8

Achromatopsia
C6C6C6

Achromatomaly
CFC2C1

CSS Examples

Text

The CSS property to change the color of the text to Hex E0BBB8 is called "color". The color property can be set on classes, ids or directly on the HTML element.

This example shows how text in the color #E0BBB8 looks like.

```
.text, #text, p{  
    color:#E0BBB8  
}
```

If you want to add a text shadow in that color use the text-shadow property, you can generate a text shadow directly with our [CSS Text Shadow Generator](#).

Here you see how black text with a 4 pixel #E0BBB8 colored shadow looks like.

```
.shadow{ text-shadow: 4px 4px 2px #E0BBB8  
}
```

Border

The CSS property to change the border of an element to Hex E0BBB8 is called "border". The border property can be set on classes, ids or directly on the HTML element.

This example shows the color as border, it can be applied via the CSS property "border" or "border-color".

```
.border, #border, table{ border:4px solid  
#E0BBB8 }
```

If only the border color should be changed use the property `border-color`.

```
.border{ border-color:#E0BBB8 }
```

If you want to add a box shadow in that color use:

Here you see how a box with a 4 pixel #E0BBB8 colored shadow looks like.

```
.boxshadow{ -moz-box-shadow:4px 4px 4px  
4px #E0BBB8; -webkit-box-shadow:4px 4px  
4px 4px #E0BBB8; box-shadow:4px 4px 4px  
4px #E0BBB8 }
```

Background

The CSS property to change the background color of an element to Hex E0BBB8 is called "background". The background property can be set on classes, ids or directly on the HTML element.

```
.background, #background, body{  
background:#E0BBB8 }
```

If only the background color should be changed can be used:

```
.background{ background-color:#E0BBB8 }
```

This example shows the color as background, it is applied via the CSS property "background".

To optimize and compress your CSS code, you can use our [online CSS compressor and optimizer](#) based on csstidy. If you want to create a linear or radial gradient as background or border, check our [CSS Gradient Generator](#).

Hey! You found this booklet interesting? Support Converting Colors with the new Membership Option!

The pro membership hides all ads, plus gives you double the colors in the color bucket, and more awesome pro features!

[Learn more, Memberships starting at \\$2.50/m!](#)

**Follow me
on Twitter!**

@ConvertingColor