

Converting Colors

Hex(E0BDAA)

Have a look what the booklet for
Hex(E0BDAA) contains.

Hex(E0BDAA)	3
<i>Conversions</i>	4
<i>Details</i>	6
<i>Harmonies</i>	11
<i>Previews</i>	23
<i>Color Blindness Simulation</i>	26
<i>CSS Examples</i>	29

Color

Hex(E0BDAA)

Conversions

Conversions Part 1

Format	Color
Hex	E0BDAA
RGB	224, 189, 170
RGB Percent	88%, 74%, 67%
CMY	0.1216, 0.2588, 0.3333
CMYK	0.00, 0.16, 0.24, 0.12
HSL	21°, 47%, 77%
HSV	21°, 24%, 88%
XYZ	56.1938, 55.1448, 45.7125
YIQ	197.2990, 26.9590, 1.5110

Conversions

Conversions Part 2

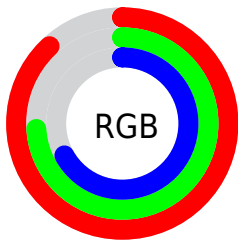
Format	Color
RYB	224, 199, 170
Decimal	14728618
CIELab	79.12, 9.63, 14.25
CIELCh	79, 17.199, 55.952
Yxy	55.1448, 0.3578, 0.3511
Android (android.graphics.Color)	4292918698 (0xFFE0BDAA)
YUV	197.2990, -13.4584, 23.4168
Hunter-Lab	74.2595, 5.1206, 15.4841

Details

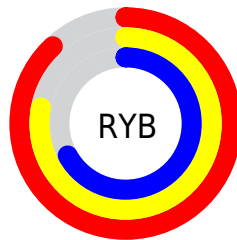
The Hex color **E0BDAA** is a light color, and the websafe version is hex **FFCCCC**. A complement of this color would be **AACDE0**, and the grayscale version is **C5C5C5**.

A 20% lighter version of the original color is **FFF5E1**, and **A88876** is the 20% darker color. If you saturate the color by 10%, you get **E0AE94**, and if you desaturate by 10%, it is **E0CCC0**.

Distribution



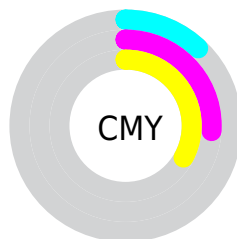
- Red (88%)
- Green (74%)
- Blue (67%)



- Red (88%)
- Yellow (78%)
- Blue (67%)



- Cyan (0%)
- Magenta (16%)
- Yellow (24%)
- Black (12%)



- Cyan (12%)
- Magenta (26%)
- Yellow (33%)

Brightness & Saturation Gradients

These gradients show how the Hex color E0BDAA changes by changing the brightness by 10 percent. The first figure shows a shift by +10% for each color and the second figure -10%.

Similar to the brightness gradients but the following saturation gradients show a change of the Hex color E0BDAA by changing the saturation by 10% instead.

 E0BDAA

 E0BDAA

FFFFFF

 C4A28F

 FFF5E1

 A88876

FFFFFFE

 8D6E5D

 735645

 5A3F2F

 41291A

 2B1400

 0F0000

 000000

 E0BDAA

 E0BDAA

 E0AE94

 E0CCC0

 E0A07D

 E0DAD7

 E09167

 E0E9ED

 E08350

 E0F7FF

 E0743A

 E0FFFF

 E06624

 E0570D

 E04F00

Harmonies

Analogous

The Analogous color harmony consists of three colors that are next to each other on the color wheel.



E6BAB7



E0BDAA



D3C2A4

Triad

The Triadic color harmony groups three colors that are evenly spaced from another and form a triangle on the color wheel.



E0BDAA



A0CDC1



C4C1E1

Complementary

The Complementary color scheme is a pair of colors which are on the opposite of each other on the color wheel.



E0BDAA



AACDE0

Split Complementary

Split-complementary colors differ from the complementary color scheme. The scheme consists of three colors, the original color and two neighbors of the complement color.



B0C6E3



E0BDAA



9ACDD1

Square

The Square scheme is like the rectangle color scheme, but the four colors are evenly spaced on the color wheel.



E0BDAA



AFCBB2



A0CADE



D7BCD6

Rectangle

The Rectangle color scheme consists of four colors that form a rectangle on the color wheel.



E0BDAA



C8C6A5



A0CADE



BDC2E3

Sweetspot

The Sweet Spot groups the original color and five complimentary colors.



E0BDAA



FFF3ED



E0AACD



807975



000000



808080

Same Dimension

The Same Dimension uses a secret algorithm to generate beautiful new colors.



E0BDAA



FFCFB5



E0D8AA



706965



B03E00



301100

Inverse Universe

The Inverse Universe completely reimagines the original color for something new.



AACDE0



B5E5FF



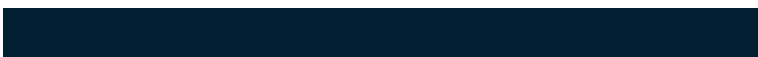
AAB2E0



656C70



0072B0



001F30

Previews

White Background



This preview shows how the Hex color E0BDAA looks on a white background.

Color Contrast Check

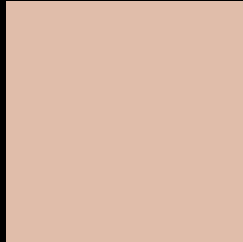
Large Text (above 18pt) WCAG AA × Fail

Any Text WCAG AA × Fail

Large Text (above 18pt) WCAG AAA × Fail

Any Text WCAG AAA × Fail

Black Background



This preview shows how the Hex color E0BDAA looks on a black background.

Color Contrast Check

Large Text (above 18pt) WCAG AA ✓ Pass

Any Text WCAG AA ✓ Pass

Large Text (above 18pt) WCAG AAA ✓ Pass

Any Text WCAG AAA ✓ Pass

If you want to check with other color combinations, try the [Color Contrast Checker](#).

Hex E0BDAA Background



This preview shows how black text looks on a background with the Hex color E0BDAA.

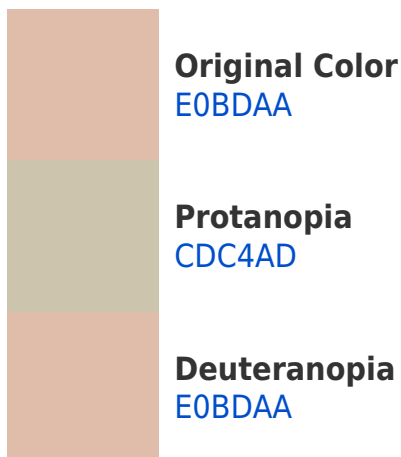


This preview shows how white text looks on a background with the Hex color E0BDAA.

Color Blindness Simulation

Color vision deficiency is a very complex topic, and I could not describe the different causes any better than Wikipedia does, so if you want to learn more, you should check out their [article about color blindness](#).

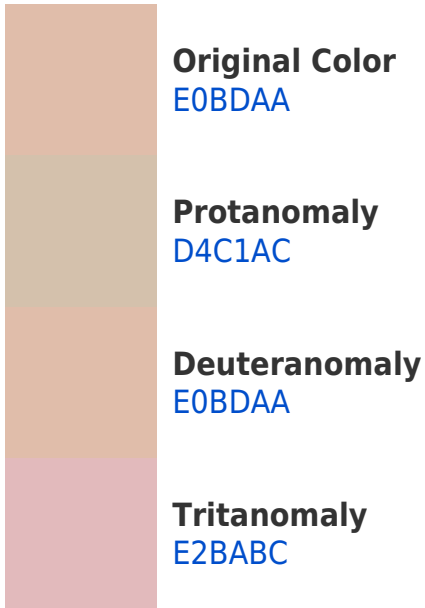
Dichromacy



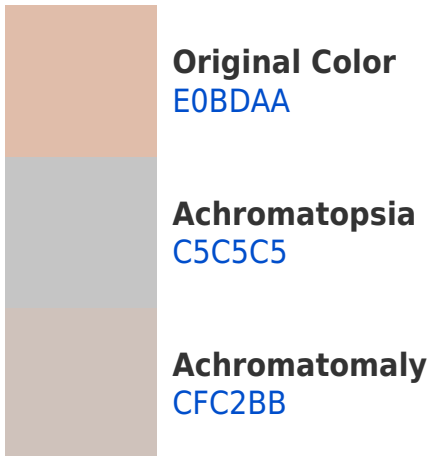


Tritanopia
E3B9C7

Trichromacy



Monochromacy



CSS Examples

Text

The CSS property to change the color of the text to Hex E0BDAA is called "color". The color property can be set on classes, ids or directly on the HTML element.

This example shows how text in the color #E0BDAA looks like.

```
.text, #text, p{  
  color:#E0BDAA  
}
```

If you want to add a text shadow in that color use the text-shadow property, you can generate a text shadow directly with our [CSS Text Shadow Generator](#).

Here you see how black text with a 4 pixel #E0BDAA colored shadow looks like.

```
.shadow{ text-shadow: 4px 4px 2px #E0BDAA
}
```

Border

The CSS property to change the border of an element to Hex E0BDAA is called "border". The border property can be set on classes, ids or directly on the HTML element.

This example shows the color as border, it can be applied via the CSS property "border" or "border-color".

```
.border, #border, table{ border:4px solid
#E0BDAA }
```

If only the border color should be changed use the property `border-color`.

```
.border{ border-color:#E0BDAA }
```

If you want to add a box shadow in that color use:

Here you see how a box with a 4 pixel #E0BDAA colored shadow looks like.

```
.boxshadow{ -moz-box-shadow:4px 4px 4px  
4px #E0BDAA; -webkit-box-shadow:4px 4px  
4px 4px #E0BDAA; box-shadow:4px 4px 4px  
4px #E0BDAA }
```

Background

The CSS property to change the background color of an element to Hex E0BDAA is called "background". The background property can be set on classes, ids or directly on the HTML element.

```
.background, #background, body{  
background:#E0BDAA }
```

If only the background color should be changed can be used:

```
.background{ background-color:#E0BDAA }
```

This example shows the color as background, it is applied via the CSS property "background".

To optimize and compress your CSS code, you can use our [online CSS compressor and optimizer](#) based on csstidy. If you want to create a linear or radial gradient as background or border, check our [CSS Gradient Generator](#).

Hey! You found this booklet interesting? Support Converting Colors with the new Membership Option!

The pro membership hides all ads, plus gives you double the colors in the color bucket, and more awesome pro features!

[Learn more, Memberships starting at \\$2.50/m!](#)

**Follow me
on Twitter!**

@ConvertingColor