

Converting Colors

Hex(E0BDB7)

Have a look what the booklet for
Hex(E0BDB7) contains.

Hex(E0BDB7)	3
<i>Conversions</i>	4
<i>Details</i>	6
<i>Harmonies</i>	11
<i>Previews</i>	23
<i>Color Blindness Simulation</i>	26
<i>CSS Examples</i>	29

Color

Hex(E0BDB7)

Conversions

Conversions Part 1

Format	Color
Hex	E0BDB7
RGB	224, 189, 183
RGB Percent	88%, 74%, 72%
CMY	0.1216, 0.2588, 0.2824
CMYK	0.00, 0.16, 0.18, 0.12
HSL	9°, 40%, 80%
HSV	9°, 18%, 88%
XYZ	57.4853, 55.6614, 52.5137
YIQ	198.7810, 22.7860, 5.5540

Conversions

Conversions Part 2

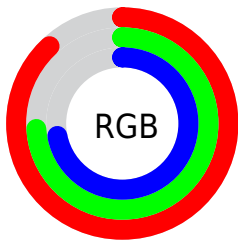
Format	Color
R_{YB}	224, 190, 183
Decimal	14728631
CIE _{Lab}	79.42, 11.54, 7.67
CIE _{LCh}	79, 13.862, 33.617
Yxy	55.6614, 0.3470, 0.3360
Android (android.graphics.Color)	4292918711 (0xFFE0BDB7)
YUV	198.7810, -7.7800, 22.1171
Hunter-Lab	74.6066, 6.9751, 10.4919

Details

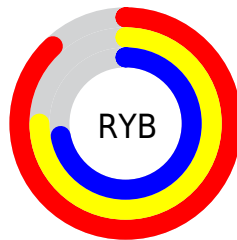
The Hex color **E0BDB7** is a light color, and the websafe version is hex **FFCCCC**. A complement of this color would be **B7DAE0**, and the grayscale version is **C7C7C7**.

A 20% lighter version of the original color is **FFF5EF**, and **A88882** is the 20% darker color. If you saturate the color by 10%, you get **E0AAA1**, and if you desaturate by 10%, it is **E0D0CD**.

Distribution



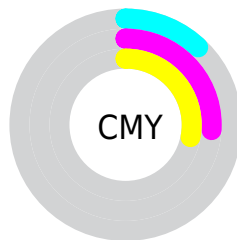
- Red (88%)
- Green (74%)
- Blue (72%)



- Red (88%)
- Yellow (75%)
- Blue (72%)



- Cyan (0%)
- Magenta (16%)
- Yellow (18%)
- Black (12%)



- Cyan (12%)
- Magenta (26%)
- Yellow (28%)

Brightness & Saturation Gradients

These gradients show how the Hex color E0BDB7 changes by changing the brightness by 10 percent. The first figure shows a shift by +10% for each color and the second figure -10%.

Similar to the brightness gradients but the following saturation gradients show a change of the Hex color E0BDB7 by changing the saturation by 10% instead.

 E0BDB7

FFFFFF

 FFF5EF

 E0BDB7

 C4A29C

 A88882

 8E6E69

 745651

 5A3F3A

 422824

 2B140F

 140000

 000000

 E0BDB7

 E0BDB7

 E0AAA1

 E0D0CD

 E0978A

 E0E3E4

 E08474

 E0F6FA

 E0715D

 E0FFFF

 E05D47

 E04A31

 E0371A

 E02404

 E02100

Harmonies

Analogous

The Analogous color harmony consists of three colors that are next to each other on the color wheel.



DFBCC4



E0BDB7



DAC0AE

Triad

The Triadic color harmony groups three colors that are evenly spaced from another and form a triangle on the color wheel.



E0BDB7



B1CBB9



B9C5DE

Complementary

The Complementary color scheme is a pair of colors which are on the opposite of each other on the color wheel.



E0BDB7



B7DAE0

Split Complementary

Split-complementary colors differ from the complementary color scheme. The scheme consists of three colors, the original color and two neighbors of the complement color.



ABC9DB



E0BDB7



A7CCC6

Square

The Square scheme is like the rectangle color scheme, but the four colors are evenly spaced on the color wheel.



E0BDB7



BFC8AF



A4CCD3



C9C1DA

Rectangle

The Rectangle color scheme consists of four colors that form a rectangle on the color wheel.



E0DBB7



D2C3AB



A4CCD3



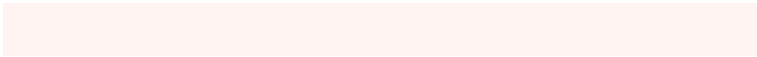
B4C7DE

Sweetspot

The Sweet Spot groups the original color and five complimentary colors.



E0BDB7



FFF4F2



E0B7DB



807978



000000



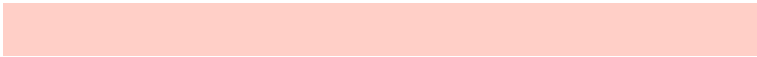
808080

Same Dimension

The Same Dimension uses a secret algorithm to generate beautiful new colors.



E0BDB7



FFCFC7



E0D1B7



706765



B01A00



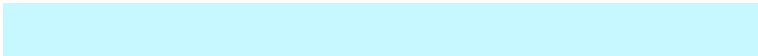
300700

Inverse Universe

The Inverse Universe completely reimagines the original color for something new.



B7DAE0



C7F7FF



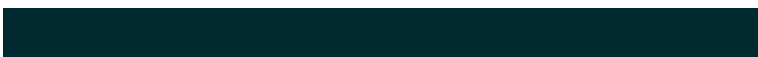
B7C6E0



656F70



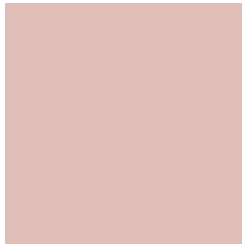
0096B0



002930

Previews

White Background



This preview shows how the Hex color E0BDB7 looks on a white background.

Color Contrast Check

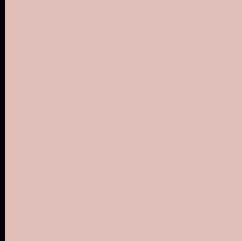
Large Text (above 18pt) WCAG AA × Fail

Any Text WCAG AA × Fail

Large Text (above 18pt) WCAG AAA × Fail

Any Text WCAG AAA × Fail

Black Background



This preview shows how the Hex color E0BDB7 looks on a black background.

Color Contrast Check

Large Text (above 18pt) WCAG AA ✓ Pass

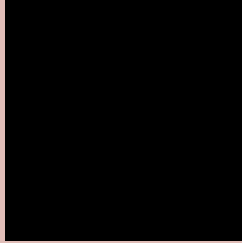
Any Text WCAG AA ✓ Pass

Large Text (above 18pt) WCAG AAA ✓ Pass

Any Text WCAG AAA ✓ Pass

If you want to check with other color combinations, try the [Color Contrast Checker](#).

Hex E0BDB7 Background



This preview shows how black text looks on a background with the Hex color E0BDB7.

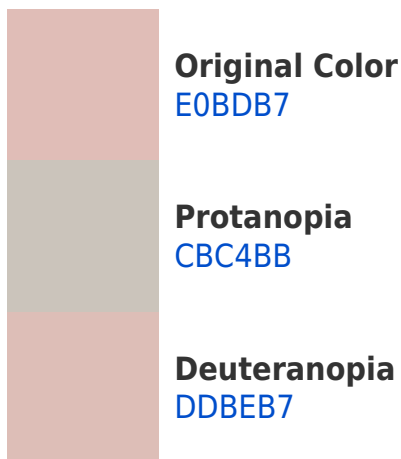



This preview shows how white text looks on a background with the Hex color E0BDB7.

Color Blindness Simulation

Color vision deficiency is a very complex topic, and I could not describe the different causes any better than Wikipedia does, so if you want to learn more, you should check out their [article about color blindness](#).

Dichromacy





Tritanopia
E2BAC9

Trichromacy



Original Color
E0BDB7

Protanomaly
D3C1BA

Deuteranomaly
DEBEB7

Tritanomaly
E1BBC2

Monochromacy



Original Color
E0BDB7

Achromatopsia
C7C7C7

Achromatomaly
D0C3C1

CSS Examples

Text

The CSS property to change the color of the text to Hex E0BDB7 is called "color". The color property can be set on classes, ids or directly on the HTML element.

This example shows how text in the color #E0BDB7 looks like.

```
.text, #text, p{  
    color:#E0BDB7  
}
```

If you want to add a text shadow in that color use the text-shadow property, you can generate a text shadow directly with our [CSS Text Shadow Generator](#).

Here you see how black text with a 4 pixel #E0BDB7 colored shadow looks like.

```
.shadow{ text-shadow: 4px 4px 2px #E0BDB7
}
```

Border

The CSS property to change the border of an element to Hex E0BDB7 is called "border". The border property can be set on classes, ids or directly on the HTML element.

This example shows the color as border, it can be applied via the CSS property "border" or "border-color".

```
.border, #border, table{ border:4px solid
#E0BDB7 }
```

If only the border color should be changed use the property `border-color`.

```
.border{ border-color:#E0BDB7 }
```

If you want to add a box shadow in that color use:

Here you see how a box with a 4 pixel #E0BDB7 colored shadow looks like.

```
.boxshadow{ -moz-box-shadow:4px 4px 4px  
4px #E0BDB7; -webkit-box-shadow:4px 4px  
4px 4px #E0BDB7; box-shadow:4px 4px 4px  
4px #E0BDB7 }
```

Background

The CSS property to change the background color of an element to Hex E0BDB7 is called "background". The background property can be set on classes, ids or directly on the HTML element.

```
.background, #background, body{  
background:#E0BDB7 }
```

If only the background color should be changed can be used:

```
.background{ background-color:#E0BDB7 }
```

This example shows the color as background, it is applied via the CSS property "background".

To optimize and compress your CSS code, you can use our [online CSS compressor and optimizer](#) based on csstidy. If you want to create a linear or radial gradient as background or border, check our [CSS Gradient Generator](#).

Hey! You found this booklet interesting? Support Converting Colors with the new Membership Option!

The pro membership hides all ads, plus gives you double the colors in the color bucket, and more awesome pro features!

[Learn more, Memberships starting at \\$2.50/m!](#)

**Follow me
on Twitter!**

@ConvertingColor