

Converting Colors

Hex(E0BDBE)

Have a look what the booklet for
Hex(E0BDBE) contains.

Hex(E0BDBE)	3
<i>Conversions</i>	4
<i>Details</i>	6
<i>Harmonies</i>	11
<i>Previews</i>	23
<i>Color Blindness Simulation</i>	26
<i>CSS Examples</i>	29

Color

Hex(E0BDBE)

Conversions

Conversions Part 1

Format	Color
Hex	E0BDBE
RGB	224, 189, 190
RGB Percent	88%, 74%, 75%
CMY	0.1216, 0.2588, 0.2549
CMYK	0.00, 0.16, 0.15, 0.12
HSL	358°, 36%, 81%
HSV	358°, 16%, 88%
XYZ	58.2323, 55.9602, 56.4474
YIQ	199.5790, 20.5390, 7.7310

Conversions

Conversions Part 2

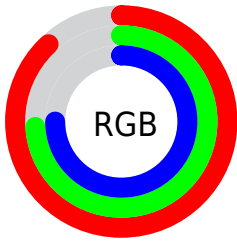
Format	Color
RYB	224, 189, 190
Decimal	14728638
CIELab	79.59, 12.63, 4.15
CIELCh	80, 13.296, 18.170
Yxy	55.9602, 0.3413, 0.3279
Android (android.graphics.Color)	4292918718 (0xFFE0BDBE)
YUV	199.5790, -4.7224, 21.4172
Hunter-Lab	74.8065, 8.0399, 7.6256

Details

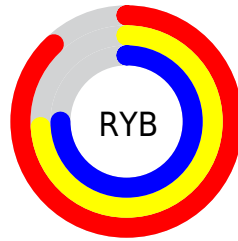
The Hex color **E0DBE** is a light color, and the websafe version is hex **FFCCCC**. A complement of this color would be **BDE0DF**, and the grayscale version is **C8C8C8**.

A 20% lighter version of the original color is **FFF5F6**, and **A88889** is the 20% darker color. If you saturate the color by 10%, you get **E0A7A8**, and if you desaturate by 10%, it is **E0D3D4**.

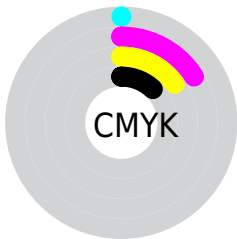
Distribution



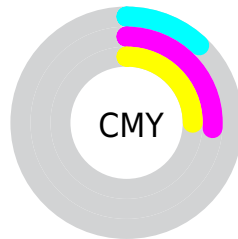
- Red (88%)
- Green (74%)
- Blue (75%)



- Red (88%)
- Yellow (74%)
- Blue (75%)



- Cyan (0%)
- Magenta (16%)
- Yellow (15%)
- Black (12%)



- Cyan (12%)
- Magenta (26%)
- Yellow (25%)

Brightness & Saturation Gradients

These gradients show how the Hex color E0BDBE changes by changing the brightness by 10 percent. The first figure shows a shift by +10% for each color and the second figure -10%.

Similar to the brightness gradients but the following saturation gradients show a change of the Hex color E0BDBE by changing the saturation by 10% instead.

 E0BDBE

 E0BDBE

FFFFFF

 C4A2A3

 FFF5F6

 A88889

 8E6E6F

 745657

 5B3E40

 43282A

 2C1415

 170000

 000000

 E0BDBE

 E0BDBE

 E0A7A8

 E0D3D4

 E09092

 E0EAEA

 E07A7D

 E0FFFF

 E06367

 E04D51

 E0373B

 E02026

 E00A10

 E00006

Harmonies

Analogous

The Analogous color harmony consists of three colors that are next to each other on the color wheel.



DCBDCB



E0DBE



DDBFB3

Triad

The Triadic color harmony groups three colors that are evenly spaced from another and form a triangle on the color wheel.



E0BDBE



B9CAB4



B2C8DD

Complementary

The Complementary color scheme is a pair of colors which are on the opposite of each other on the color wheel.



E0BDBE



BDE0DF

Split Complementary

Split-complementary colors differ from the complementary color scheme. The scheme consists of three colors, the original color and two neighbors of the complement color.



A8CBD7



E0BDBE



ADCCC0

Square

The Square scheme is like the rectangle color scheme, but the four colors are evenly spaced on the color wheel.



E0BDBE



C7C7AE



A6CDCC



C2C4DD

Rectangle

The Rectangle color scheme consists of four colors that form a rectangle on the color wheel.



E0BDBE



D8C1AF



A6CDCC



AEC9DC

Sweetspot

The Sweet Spot groups the original color and five complimentary colors.



E0BDBE



FFF2F3



DFBDE0



807878



000000



808080

Same Dimension

The Same Dimension uses a secret algorithm to generate beautiful new colors.



E0BDBE



FFCFD0



E0CDBD



706565



B00005



300001

Inverse Universe

The Inverse Universe completely reimagines the original color for something new.



E0BDBE



FFCFD0



BDD0E0



706565



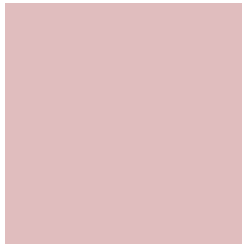
B00005



300001

Previews

White Background



This preview shows how the Hex color E0BDBE looks on a white background.

Color Contrast Check

Large Text (above 18pt) WCAG AA × Fail

Any Text WCAG AA × Fail

Large Text (above 18pt) WCAG AAA × Fail

Any Text WCAG AAA × Fail

Black Background



This preview shows how the Hex color E0BDBE looks on a black background.

Color Contrast Check

Large Text (above 18pt) WCAG AA ✓ Pass

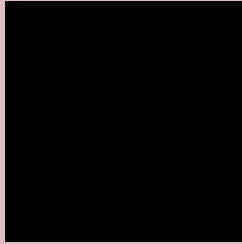
Any Text WCAG AA ✓ Pass

Large Text (above 18pt) WCAG AAA ✓ Pass

Any Text WCAG AAA ✓ Pass

If you want to check with other color combinations, try the [Color Contrast Checker](#).

Hex E0BDBE Background



This preview shows how black text looks on a background with the Hex color E0BDBE.






This preview shows how white text looks on a background with the Hex color E0BDBE.

Color Blindness Simulation

Color vision deficiency is a very complex topic, and I could not describe the different causes any better than Wikipedia does, so if you want to learn more, you should check out their [article about color blindness](#).

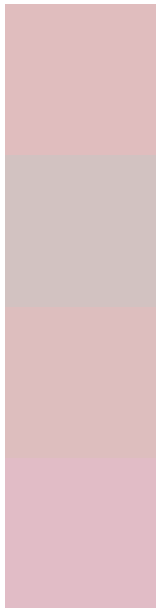
Dichromacy

	Original Color E0BDBE
	Protanopia CAC5C2
	Deuteranopia DBBFBE



Tritanopia
E1BBCA

Trichromacy



Original Color
E0BDBE

Protanomaly
D2C2C1

Deuteranomaly
DDBEBE

Tritanomaly
E1BCC6

Monochromacy



Original Color
E0BDBE

Achromatopsia
C8C8C8

Achromatomaly
D1C4C4

CSS Examples

Text

The CSS property to change the color of the text to Hex E0BDBE is called "color". The color property can be set on classes, ids or directly on the HTML element.

This example shows how text in the color #E0BDBE looks like.

```
.text, #text, p{  
    color:#E0BDBE  
}
```

If you want to add a text shadow in that color use the text-shadow property, you can generate a text shadow directly with our [CSS Text Shadow Generator](#).

Here you see how black text with a 4 pixel #E0BDBE colored shadow looks like.

```
.shadow{ text-shadow: 4px 4px 2px #E0BDBE
}
```

Border

The CSS property to change the border of an element to Hex E0BDBE is called "border". The border property can be set on classes, ids or directly on the HTML element.

This example shows the color as border, it can be applied via the CSS property "border" or "border-color".

```
.border, #border, table{ border:4px solid
#E0BDBE }
```

If only the border color should be changed use the property `border-color`.

```
.border{ border-color:#E0BDBE }
```

If you want to add a box shadow in that color use:

Here you see how a box with a 4 pixel #E0BDBE colored shadow looks like.

```
.boxshadow{ -moz-box-shadow:4px 4px 4px  
4px #E0BDBE; -webkit-box-shadow:4px 4px  
4px 4px #E0BDBE; box-shadow:4px 4px 4px  
4px #E0BDBE }
```

Background

The CSS property to change the background color of an element to Hex E0BDBE is called "background". The background property can be set on classes, ids or directly on the HTML element.

```
.background, #background, body{  
background:#E0BDBE }
```

If only the background color should be changed can be used:

```
.background{ background-color:#E0BDBE }
```

This example shows the color as background, it is applied via the CSS property "background".

To optimize and compress your CSS code, you can use our [online CSS compressor and optimizer](#) based on csstidy. If you want to create a linear or radial gradient as background or border, check our [CSS Gradient Generator](#).

Hey! You found this booklet interesting? Support Converting Colors with the new Membership Option!

The pro membership hides all ads, plus gives you double the colors in the color bucket, and more awesome pro features!

[Learn more, Memberships starting at \\$2.50/m!](#)

**Follow me
on Twitter!**

@ConvertingColor