

Converting Colors

Hex(E0C0B8)

Have a look what the booklet for
Hex(E0C0B8) contains.

Hex(E0C0B8)	3
<i>Conversions</i>	4
<i>Details</i>	6
<i>Harmonies</i>	11
<i>Previews</i>	23
<i>Color Blindness Simulation</i>	26
<i>CSS Examples</i>	29

Color

Hex(E0C0B8)

Conversions

Conversions Part 1

Format	Color
Hex	E0C0B8
RGB	224, 192, 184
RGB Percent	88%, 75%, 72%
CMY	0.1216, 0.2471, 0.2784
CMYK	0.00, 0.14, 0.18, 0.12
HSL	12°, 39%, 80%
HSV	12°, 18%, 88%
XYZ	58.2418, 57.0073, 53.2812
YIQ	200.6560, 21.6400, 4.2960

Conversions

Conversions Part 2

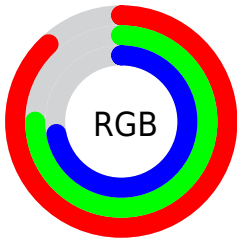
Format	Color
RYB	224, 194, 184
Decimal	14729400
CIELab	80.18, 10.10, 8.23
CIElCh	80, 13.030, 39.168
Yxy	57.0073, 0.3456, 0.3383
Android (android.graphics.Color)	4292919480 (0xFFE0C0B8)
YUV	200.6560, -8.2114, 20.4727
Hunter-Lab	75.5032, 5.5613, 11.0123

Details

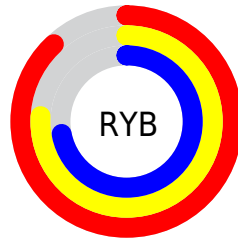
The Hex color **E0C0B8** is a light color, and the websafe version is hex **FFCCCC**. A complement of this color would be **B8D8E0**, and the grayscale version is **C9C9C9**.

A 20% lighter version of the original color is **FFF8F0**, and **A88B83** is the 20% darker color. If you saturate the color by 10%, you get **E0AEA2**, and if you desaturate by 10%, it is **E0D2CE**.

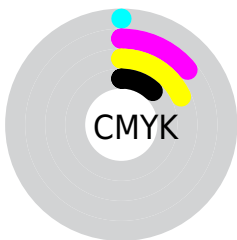
Distribution



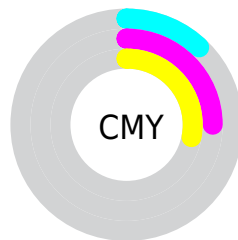
- Red (88%)
- Green (75%)
- Blue (72%)



- Red (88%)
- Yellow (76%)
- Blue (72%)



- Cyan (0%)
- Magenta (14%)
- Yellow (18%)
- Black (12%)



- Cyan (12%)
- Magenta (25%)
- Yellow (28%)

Brightness & Saturation Gradients

These gradients show how the Hex color E0C0B8 changes by changing the brightness by 10 percent. The first figure shows a shift by +10% for each color and the second figure -10%.

Similar to the brightness gradients but the following saturation gradients show a change of the Hex color E0C0B8 by changing the saturation by 10% instead.

 E0C0B8

 E0C0B8

FFFFFF

 C4A59D

 FFF8F0

 A88B83

 8E716A

 745952

 5B413B

 432B25

 2C1610

 170000

 000000

 E0C0B8

 E0C0B8

 E0AEA2

 E0D2CE

 E09C8B

 E0E4E5

 E08A75

 E0F6FB

 E0785E

 E0FFFF

 E06648

 E05432

 E0431B

 E03105

 E02D00

Harmonies

Analogous

The Analogous color harmony consists of three colors that are next to each other on the color wheel.



E1BFC3



E0C0B8



D9C3B0

Triad

The Triadic color harmony groups three colors that are evenly spaced from another and form a triangle on the color wheel.



E0C0B8



B2CDBE



BFC7DF

Complementary

The Complementary color scheme is a pair of colors which are on the opposite of each other on the color wheel.



E0C0B8



B8D8E0

Split Complementary

Split-complementary colors differ from the complementary color scheme. The scheme consists of three colors, the original color and two neighbors of the complement color.



B1CADD



E0C0B8



AACECA

Square

The Square scheme is like the rectangle color scheme, but the four colors are evenly spaced on the color wheel.



E0C0B8



BFCBB4



A9CDD6



CEC3DA

Rectangle

The Rectangle color scheme consists of four colors that form a rectangle on the color wheel.



E0C0B8



D1C6AF



A9CDD6



BAC8DF

Sweetspot

The Sweet Spot groups the original color and five complimentary colors.



E0C0B8



FFF5F2



E0B8D8



807978



000000



808080

Same Dimension

The Same Dimension uses a secret algorithm to generate beautiful new colors.



E0C0B8



FFD4C9



E0D4B8



706765



B02300



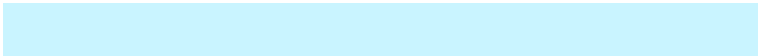
300A00

Inverse Universe

The Inverse Universe completely reimagines the original color for something new.



B8D8E0



C9F4FF



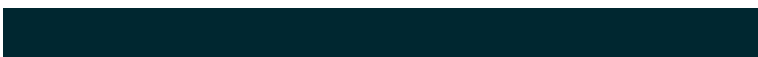
B8C4E0



656E70



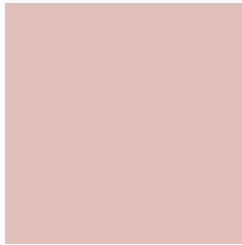
008DB0



002730

Previews

White Background



This preview shows how the Hex color E0C0B8 looks on a white background.

Color Contrast Check

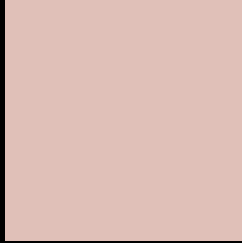
Large Text (above 18pt) WCAG AA × Fail

Any Text WCAG AA × Fail

Large Text (above 18pt) WCAG AAA × Fail

Any Text WCAG AAA × Fail

Black Background



This preview shows how the Hex color E0C0B8 looks on a black background.

Color Contrast Check

Large Text (above 18pt) WCAG AA ✓ Pass

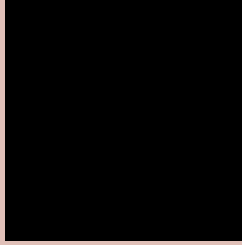
Any Text WCAG AA ✓ Pass

Large Text (above 18pt) WCAG AAA ✓ Pass

Any Text WCAG AAA ✓ Pass

If you want to check with other color combinations, try the [Color Contrast Checker](#).

Hex E0C0B8 Background



This preview shows how black text looks on a background with the Hex color E0C0B8.

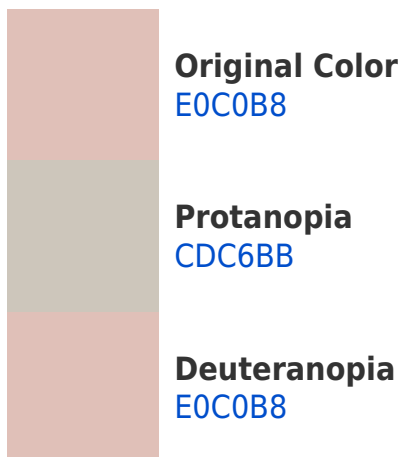


This preview shows how white text looks on a background with the Hex color E0C0B8.

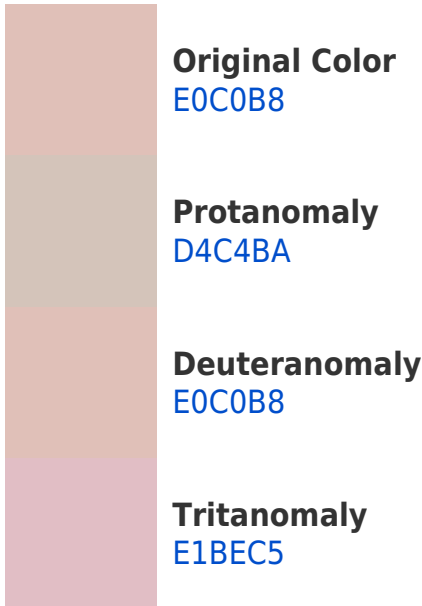
Color Blindness Simulation

Color vision deficiency is a very complex topic, and I could not describe the different causes any better than Wikipedia does, so if you want to learn more, you should check out their [article about color blindness](#).

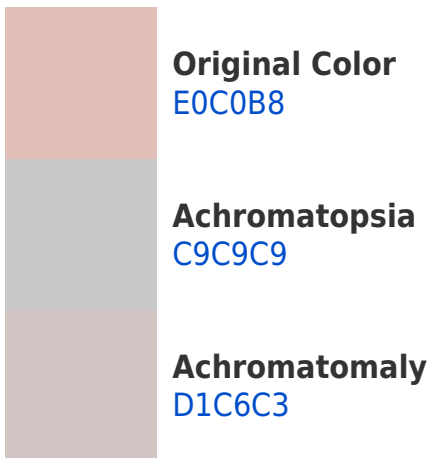
Dichromacy



Trichromacy



Monochromacy



CSS Examples

Text

The CSS property to change the color of the text to Hex E0C0B8 is called "color". The color property can be set on classes, ids or directly on the HTML element.

This example shows how text in the color #E0C0B8 looks like.

```
.text, #text, p{  
    color:#E0C0B8  
}
```

If you want to add a text shadow in that color use the text-shadow property, you can generate a text shadow directly with our [CSS Text Shadow Generator](#).

Here you see how black text with a 4 pixel #E0C0B8 colored shadow looks like.

```
.shadow{ text-shadow: 4px 4px 2px #E0C0B8  
}
```

Border

The CSS property to change the border of an element to Hex E0C0B8 is called "border". The border property can be set on classes, ids or directly on the HTML element.

This example shows the color as border, it can be applied via the CSS property "border" or "border-color".

```
.border, #border, table{ border:4px solid  
#E0C0B8 }
```

If only the border color should be changed use the property `border-color`.

```
.border{ border-color:#E0C0B8 }
```

If you want to add a box shadow in that color use:

Here you see how a box with a 4 pixel #E0C0B8 colored shadow looks like.

```
.boxshadow{ -moz-box-shadow:4px 4px 4px  
4px #E0C0B8; -webkit-box-shadow:4px 4px  
4px 4px #E0C0B8; box-shadow:4px 4px 4px  
4px #E0C0B8 }
```

Background

The CSS property to change the background color of an element to Hex E0C0B8 is called "background". The background property can be set on classes, ids or directly on the HTML element.

```
.background, #background, body{  
background:#E0C0B8 }
```

If only the background color should be changed can be used:

```
.background{ background-color:#E0C0B8 }
```

This example shows the color as background, it is applied via the CSS property "background".

To optimize and compress your CSS code, you can use our [online CSS compressor and optimizer](#) based on csstidy. If you want to create a linear or radial gradient as background or border, check our [CSS Gradient Generator](#).

Hey! You found this booklet interesting? Support Converting Colors with the new Membership Option!

The pro membership hides all ads, plus gives you double the colors in the color bucket, and more awesome pro features!

[Learn more, Memberships starting at \\$2.50/m!](#)

**Follow me
on Twitter!**

@ConvertingColor