

Converting Colors

Hex(E0C1B7)

Have a look what the booklet for
Hex(E0C1B7) contains.

Hex(E0C1B7)	3
<i>Conversions</i>	4
<i>Details</i>	6
<i>Harmonies</i>	11
<i>Previews</i>	23
<i>Color Blindness Simulation</i>	26
<i>CSS Examples</i>	29

Color

Hex(E0C1B7)

Conversions

Conversions Part 1

Format	Color
Hex	E0C1B7
RGB	224, 193, 183
RGB Percent	88%, 76%, 72%
CMY	0.1216, 0.2431, 0.2824
CMYK	0.00, 0.14, 0.18, 0.12
HSL	15°, 40%, 80%
HSV	15°, 18%, 88%
XYZ	58.3577, 57.4061, 52.8045
YIQ	201.1290, 21.6860, 3.4620

Conversions

Conversions Part 2

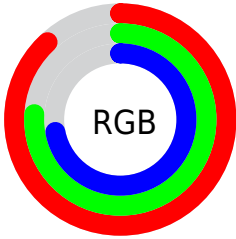
Format	Color
R _Y B	224, 196, 183
Decimal	14729655
CIE Lab	80.41, 9.42, 9.09
CIE LCh	80, 13.088, 43.973
Yxy	57.4061, 0.3462, 0.3406
Android (android.graphics.Color)	4292919735 (0xFFE0C1B7)
YUV	201.1290, -8.9376, 20.0579
Hunter-Lab	75.7668, 4.8936, 11.7156

Details

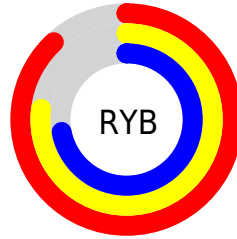
The Hex color **E0C1B7** is a light color, and the websafe version is hex **FFCCCC**. A complement of this color would be **B7D6E0**, and the grayscale version is **C9C9C9**.

A 20% lighter version of the original color is **FFF9EF**, and **A88B82** is the 20% darker color. If you saturate the color by 10%, you get **E0B0A1**, and if you desaturate by 10%, it is **E0D2CD**.

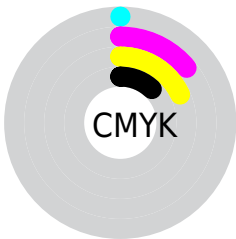
Distribution



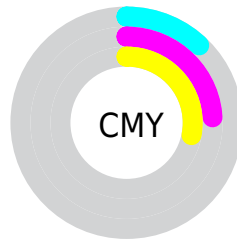
- Red (88%)
- Green (76%)
- Blue (72%)



- Red (88%)
- Yellow (77%)
- Blue (72%)



- Cyan (0%)
- Magenta (14%)
- Yellow (18%)
- Black (12%)



- Cyan (12%)
- Magenta (24%)
- Yellow (28%)

Brightness & Saturation Gradients

These gradients show how the Hex color E0C1B7 changes by changing the brightness by 10 percent. The first figure shows a shift by +10% for each color and the second figure -10%.

Similar to the brightness gradients but the following saturation gradients show a change of the Hex color E0C1B7 by changing the saturation by 10% instead.

 E0C1B7

 E0C1B7

FFFFFF

 C4A69C

 FFF9EF

 A88B82

 8E7269

 745951

 5B423A

 432C24

 2C170F

 160000

 000000

 E0C1B7

 E0C1B7

 E0B0A1

 E0D2CD

 E09F8A

 E0E3E4

 E08E74

 E0F4FA

 E07D5D

 E0FFFF

 E06C47

 E05B31

 E04A1A

 E03A04

 E03700

Harmonies

Analogous

The Analogous color harmony consists of three colors that are next to each other on the color wheel.



E2BFC2



E0C1B7



D8C4B0

Triad

The Triadic color harmony groups three colors that are evenly spaced from another and form a triangle on the color wheel.



E0C1B7



B1CEC0



C2C7DF

Complementary

The Complementary color scheme is a pair of colors which are on the opposite of each other on the color wheel.



E0C1B7



B7D6E0

Split Complementary

Split-complementary colors differ from the complementary color scheme. The scheme consists of three colors, the original color and two neighbors of the complement color.



B3CBDF



E0C1B7



A9CFCD

Square

The Square scheme is like the rectangle color scheme, but the four colors are evenly spaced on the color wheel.



E0C1B7



BDCCB6



AACDD8



D1C3D9

Rectangle

The Rectangle color scheme consists of four colors that form a rectangle on the color wheel.



E0C1B7



D0C7AF



AACDD8



BDC8E0

Sweetspot

The Sweet Spot groups the original color and five complimentary colors.



E0C1B7



FFF5F2



E0B7D6



807A78



000000



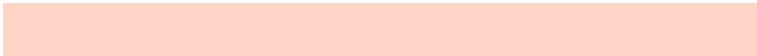
808080

Same Dimension

The Same Dimension uses a secret algorithm to generate beautiful new colors.



E0C1B7



FFD5C7



E0D5B7



706865



B02B00



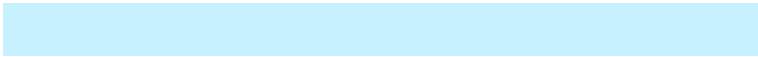
300C00

Inverse Universe

The Inverse Universe completely reimagines the original color for something new.



B7D6E0



C7F1FF



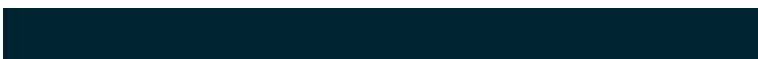
B7C2E0



656D70



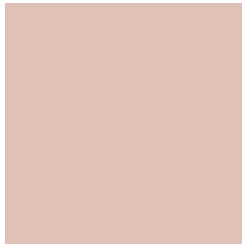
0085B0



002530

Previews

White Background



This preview shows how the Hex color E0C1B7 looks on a white background.

Color Contrast Check

Large Text (above 18pt) WCAG AA × Fail

Any Text WCAG AA × Fail

Large Text (above 18pt) WCAG AAA × Fail

Any Text WCAG AAA × Fail

Black Background



This preview shows how the Hex color E0C1B7 looks on a black background.

Color Contrast Check

Large Text (above 18pt) WCAG AA ✓ Pass

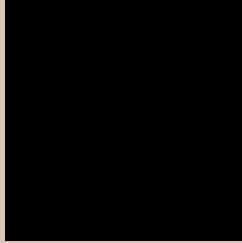
Any Text WCAG AA ✓ Pass

Large Text (above 18pt) WCAG AAA ✓ Pass

Any Text WCAG AAA ✓ Pass

If you want to check with other color combinations, try the [Color Contrast Checker](#).

Hex E0C1B7 Background



This preview shows how black text looks on a background with the Hex color E0C1B7.

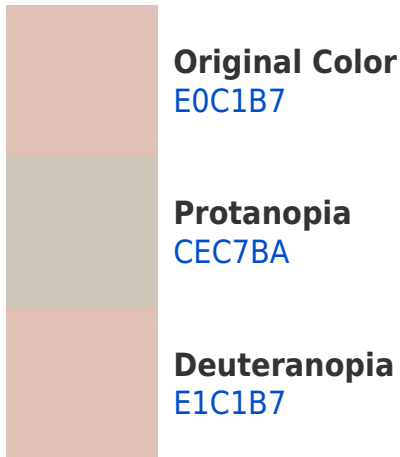


This preview shows how white text looks on a background with the Hex color E0C1B7.

Color Blindness Simulation

Color vision deficiency is a very complex topic, and I could not describe the different causes any better than Wikipedia does, so if you want to learn more, you should check out their [article about color blindness](#).

Dichromacy





Tritanopia
E3BECD

Trichromacy



Original Color
E0C1B7

Protanomaly
D5C5B9

Deuteranomaly
E1C1B7

Tritanomaly
E2BFC5

Monochromacy



Original Color
E0C1B7

Achromatopsia
C9C9C9

Achromatomaly
D1C6C2

CSS Examples

Text

The CSS property to change the color of the text to Hex E0C1B7 is called "color". The color property can be set on classes, ids or directly on the HTML element.

This example shows how text in the color #E0C1B7 looks like.

```
.text, #text, p{  
    color:#E0C1B7  
}
```

If you want to add a text shadow in that color use the text-shadow property, you can generate a text shadow directly with our [CSS Text Shadow Generator](#).

Here you see how black text with a 4 pixel #E0C1B7 colored shadow looks like.

```
.shadow{ text-shadow: 4px 4px 2px #E0C1B7
}
```

Border

The CSS property to change the border of an element to Hex E0C1B7 is called "border". The border property can be set on classes, ids or directly on the HTML element.

This example shows the color as border, it can be applied via the CSS property "border" or "border-color".

```
.border, #border, table{ border:4px solid
#E0C1B7 }
```

If only the border color should be changed use the property `border-color`.

```
.border{ border-color:#E0C1B7 }
```

If you want to add a box shadow in that color use:

Here you see how a box with a 4 pixel #E0C1B7 colored shadow looks like.

```
.boxshadow{ -moz-box-shadow:4px 4px 4px  
4px #E0C1B7; -webkit-box-shadow:4px 4px  
4px 4px #E0C1B7; box-shadow:4px 4px 4px  
4px #E0C1B7 }
```

Background

The CSS property to change the background color of an element to Hex E0C1B7 is called "background". The background property can be set on classes, ids or directly on the HTML element.

```
.background, #background, body{  
background:#E0C1B7 }
```

If only the background color should be changed can be used:

```
.background{ background-color:#E0C1B7 }
```

This example shows the color as background, it is applied via the CSS property "background".

To optimize and compress your CSS code, you can use our [online CSS compressor and optimizer](#) based on csstidy. If you want to create a linear or radial gradient as background or border, check our [CSS Gradient Generator](#).

Hey! You found this booklet interesting? Support Converting Colors with the new Membership Option!

The pro membership hides all ads, plus gives you double the colors in the color bucket, and more awesome pro features!

[Learn more, Memberships starting at \\$2.50/m!](#)

**Follow me
on Twitter!**

@ConvertingColor