

# Converting Colors

Hex(E0C3C1)

Have a look what the booklet for  
Hex(E0C3C1) contains.

<b>Hex(E0C3C1)</b> .....	3
<b><i>Conversions</i></b> .....	4
<b><i>Details</i></b> .....	6
<b><i>Harmonies</i></b> .....	11
<b><i>Previews</i></b> .....	23
<b><i>Color Blindness Simulation</i></b> .....	26
<b><i>CSS Examples</i></b> .....	29

# **Color**

**Hex(E0C3C1)**

# Conversions

## Conversions Part 1

Format	Color
Hex	E0C3C1
RGB	224, 195, 193
RGB Percent	88%, 76%, 76%
CMY	0.1216, 0.2353, 0.2431
CMYK	0.00, 0.13, 0.14, 0.12
HSL	4°, 33%, 82%
HSV	4°, 14%, 88%
XYZ	59.8812, 58.7278, 58.6316
YIQ	203.4430, 17.9260, 5.5260

# Conversions

## Conversions Part 2

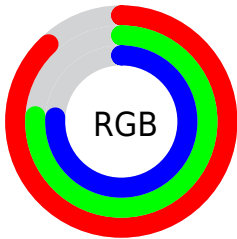
Format	Color
R <sub>Y</sub> B	224, 195, 193
Decimal	14730177
CIE Lab	81.14, 9.92, 4.77
CIE LCh	81, 11.009, 25.695
Yxy	58.7278, 0.3379, 0.3313
Android (android.graphics.Color)	4292920257 (0xFFE0C3C1)
YUV	203.4430, -5.1484, 18.0285
Hunter-Lab	76.6340, 5.3689, 8.2819

# Details

The Hex color **E0C3C1** is a light color, and the websafe version is hex **FFCCCC**. A complement of this color would be **C1DEE0**, and the grayscale version is **CBCBCB**.

A 20% lighter version of the original color is **FFFCF9**, and **A98D8C** is the 20% darker color. If you saturate the color by 10%, you get **E0AEAB**, and if you desaturate by 10%, it is **E0D8D7**.

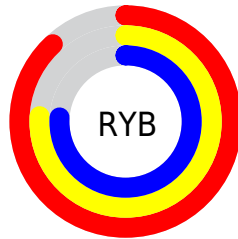
# Distribution



Red (88%)

Green (76%)

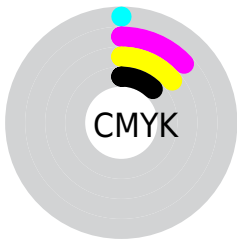
Blue (76%)



Red (88%)

Yellow (76%)

Blue (76%)

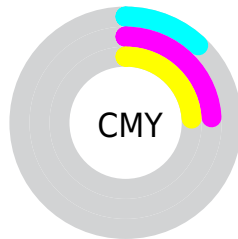


Cyan (0%)

Magenta (13%)

Yellow (14%)

Black (12%)



Cyan (12%)

Magenta (24%)

Yellow (24%)

# Brightness & Saturation Gradients

These gradients show how the Hex color E0C3C1 changes by changing the brightness by 10 percent. The first figure shows a shift by +10% for each color and the second figure -10%.

Similar to the brightness gradients but the following saturation gradients show a change of the Hex color E0C3C1 by changing the saturation by 10% instead.



 E0C3C1

 E0C3C1

FFFFFF

 C4A8A6

 FFFCF9

 A98D8C

 8E7472

 745B5A

 5B4442

 432D2C

 2C1818

 190000

 000000

 E0C3C1

 E0C3C1

 E0AEAB

 E0D8D7

 E09994

 E0EDEE

 E0847E

 E0FFFF

 E06F67

 E05A51

 E0453B

 E03024

 E01B0E

 E00E00

# Harmonies

## Analogous

The Analogous color harmony consists of three colors that are next to each other on the color wheel.



DEC3CB



E0C3C1



DCC5B9

# Triad

The Triadic color harmony groups three colors that are evenly spaced from another and form a triangle on the color wheel.



E0C3C1



BDCEBE



BDCBDE

# Complementary

The Complementary color scheme is a pair of colors which are on the opposite of each other on the color wheel.



E0C3C1



C1DEE0

# Split Complementary

Split-complementary colors differ from the complementary color scheme. The scheme consists of three colors, the original color and two neighbors of the complement color.



B3CEDA



E0C3C1



B3D0C8

# Square

The Square scheme is like the rectangle color scheme, but the four colors are evenly spaced on the color wheel.



E0C3C1



C8CCB7



B0CFD2



CAC7DC

# Rectangle

The Rectangle color scheme consists of four colors that form a rectangle on the color wheel.



E0C3C1



D7C7B6



B0CFD2



B9CCDD



# Sweetspot

The Sweet Spot groups the original color and five complimentary colors.



E0C3C1



FFF5F5



E0C1DE



807A79



000000



808080



# Same Dimension

The Same Dimension uses a secret algorithm to generate beautiful new colors.



E0C3C1



FFD6D4



E0D2C1



706665



B00B00



300300

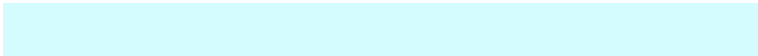


# Inverse Universe

The Inverse Universe completely reimagines the original color for something new.



C1DEE0



D4FCFF



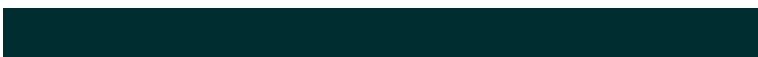
C1CFE0



656F70



00A5B0

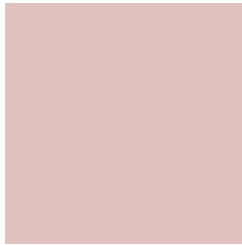


002D30



# Previews

## White Background



This preview shows how the Hex color E0C3C1 looks on a white background.

## Color Contrast Check

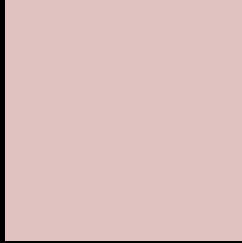
Large Text (above 18pt) WCAG AA × Fail

Any Text WCAG AA × Fail

Large Text (above 18pt) WCAG AAA × Fail

Any Text WCAG AAA × Fail

# Black Background



This preview shows how the Hex color E0C3C1 looks on a black background.

## Color Contrast Check

Large Text (above 18pt) WCAG AA ✓ Pass

Any Text WCAG AA ✓ Pass

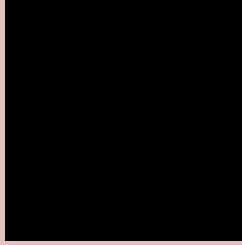
Large Text (above 18pt) WCAG AAA ✓ Pass

Any Text WCAG AAA ✓ Pass

If you want to check with other color combinations, try the [Color Contrast Checker](#).



## Hex E0C3C1 Background



This preview shows how black text looks on a background with the Hex color E0C3C1.

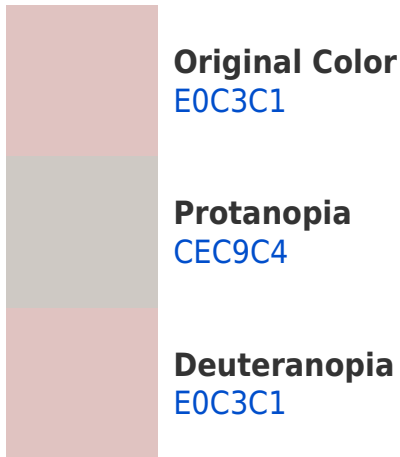


This preview shows how white text looks on a background with the Hex color E0C3C1.

# Color Blindness Simulation

Color vision deficiency is a very complex topic, and I could not describe the different causes any better than Wikipedia does, so if you want to learn more, you should check out their [article about color blindness](#).

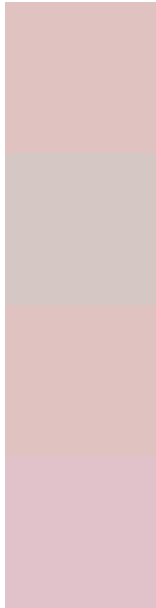
## Dichromacy





**Tritanopia**  
E2C1D0

# Trichromacy



**Original Color**  
E0C3C1

**Protanomaly**  
D5C7C3

**Deuteranomaly**  
E0C3C1

**Tritanomaly**  
E1C2CB

# Monochromacy



**Original Color**  
E0C3C1

**Achromatopsia**  
CBCBCB

**Achromatomaly**  
D3C8C7

# CSS Examples

## Text

The CSS property to change the color of the text to Hex E0C3C1 is called "color". The color property can be set on classes, ids or directly on the HTML element.

This example shows how text in the color #E0C3C1 looks like.

```
.text, #text, p{  
    color:#E0C3C1  
}
```

If you want to add a text shadow in that color use the text-shadow property, you can generate a text shadow directly with our [CSS Text Shadow Generator](#).

Here you see how black text with a 4 pixel #E0C3C1 colored shadow looks like.

```
.shadow{ text-shadow: 4px 4px 2px #E0C3C1
}
```

## Border

The CSS property to change the border of an element to Hex E0C3C1 is called "border". The border property can be set on classes, ids or directly on the HTML element.

This example shows the color as border, it can be applied via the CSS property "border" or "border-color".

```
.border, #border, table{ border:4px solid
#E0C3C1 }
```

If only the border color should be changed use the property `border-color`.

```
.border{ border-color:#E0C3C1 }
```

If you want to add a box shadow in that color use:

Here you see how a box with a 4 pixel #E0C3C1 colored shadow looks like.

```
.boxshadow{ -moz-box-shadow:4px 4px 4px  
4px #E0C3C1; -webkit-box-shadow:4px 4px  
4px 4px #E0C3C1; box-shadow:4px 4px 4px  
4px #E0C3C1 }
```

# Background

The CSS property to change the background color of an element to Hex E0C3C1 is called "background". The background property can be set on classes, ids or directly on the HTML element.

```
.background, #background, body{  
background:#E0C3C1 }
```

If only the background color should be changed can be used:

```
.background{ background-color:#E0C3C1 }
```

This example shows the color as background, it is applied via the CSS property "background".

To optimize and compress your CSS code, you can use our [online CSS compressor and optimizer](#) based on csstidy. If you want to create a linear or radial gradient as background or border, check our [CSS Gradient Generator](#).



Hey! You found this booklet interesting? Support Converting Colors with the new Membership Option!

The pro membership hides all ads, plus gives you double the colors in the color bucket, and more awesome pro features!

**[Learn more, Memberships starting at \\$2.50/m!](#)**

**Follow me  
on Twitter!**

@ConvertingColor