

Converting Colors

Hex(E0C4C2)

Have a look what the booklet for
Hex(E0C4C2) contains.

Hex(E0C4C2)	3
<i>Conversions</i>	4
<i>Details</i>	6
<i>Harmonies</i>	11
<i>Previews</i>	23
<i>Color Blindness Simulation</i>	26
<i>CSS Examples</i>	29

Color

Hex(E0C4C2)

Conversions

Conversions Part 1

Format	Color
Hex	E0C4C2
RGB	224, 196, 194
RGB Percent	88%, 77%, 76%
CMY	0.1216, 0.2314, 0.2392
CMYK	0.00, 0.12, 0.13, 0.12
HSL	4°, 33%, 82%
HSV	4°, 13%, 88%
XYZ	60.2180, 59.2222, 59.2961
YIQ	204.1440, 17.3300, 5.3140

Conversions

Conversions Part 2

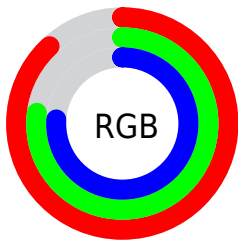
Format	Color
R_{YB}	224, 196, 194
Decimal	14730434
CIE _{Lab}	81.41, 9.55, 4.63
CIE _{LCh}	81, 10.614, 25.861
Yxy	59.2222, 0.3369, 0.3313
Android (android.graphics.Color)	4292920514 (0xFFE0C4C2)
YUV	204.1440, -5.0010, 17.4137
Hunter-Lab	76.9560, 5.0033, 8.1850

Details

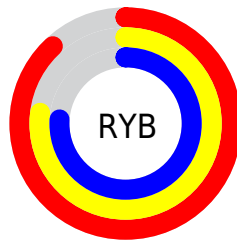
The Hex color **E0C4C2** is a light color, and the websafe version is hex **FFCCCC**. A complement of this color would be **C2DEE0**, and the grayscale version is **CCCCCC**.

A 20% lighter version of the original color is **FFDFA**, and **A98E8C** is the 20% darker color. If you saturate the color by 10%, you get **E0AFAC**, and if you desaturate by 10%, it is **E0D9D8**.

Distribution



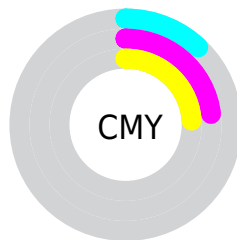
- Red (88%)
- Green (77%)
- Blue (76%)



- Red (88%)
- Yellow (77%)
- Blue (76%)



- Cyan (0%)
- Magenta (12%)
- Yellow (13%)
- Black (12%)



- Cyan (12%)
- Magenta (23%)
- Yellow (24%)

Brightness & Saturation Gradients

These gradients show how the Hex color E0C4C2 changes by changing the brightness by 10 percent. The first figure shows a shift by +10% for each color and the second figure -10%.

Similar to the brightness gradients but the following saturation gradients show a change of the Hex color E0C4C2 by changing the saturation by 10% instead.

 E0C4C2

 E0C4C2

FFFFFF

 C4A9A7

 FFFDFA

 A98E8C

 8E7573

 745C5A

 5B4443

 432E2D

 2D1918

 190000

 000000

 E0C4C2

 E0C4C2

 E0AFAC

 E0D9D8

 E09A95

 E0EEEE

 E0857F

 E0FFFF

 E07068

 E05B52

 E0473C

 E03225

 E01D0F

 E00F00

Harmonies

Analogous

The Analogous color harmony consists of three colors that are next to each other on the color wheel.



DEC4CC



E0C4C2



DCC6BA

Triad

The Triadic color harmony groups three colors that are evenly spaced from another and form a triangle on the color wheel.



E0C4C2



BECFBF



BECCDE

Complementary

The Complementary color scheme is a pair of colors which are on the opposite of each other on the color wheel.



E0C4C2



C2DEE0

Split Complementary

Split-complementary colors differ from the complementary color scheme. The scheme consists of three colors, the original color and two neighbors of the complement color.



B5CEDA



E0C4C2



B5D0C8

Square

The Square scheme is like the rectangle color scheme, but the four colors are evenly spaced on the color wheel.



E0C4C2



C9CCB8



B2D0D3



CBC8DC

Rectangle

The Rectangle color scheme consists of four colors that form a rectangle on the color wheel.



E0C4C2



D7C8B7



B2D0D3



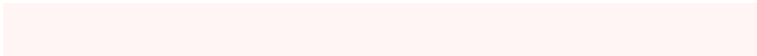
BBCDDD

Sweetspot

The Sweet Spot groups the original color and five complimentary colors.



E0C4C2



FFF5F5



E0C2DE



807A79



000000



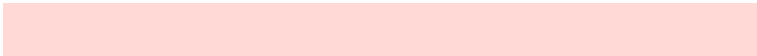
808080

Same Dimension

The Same Dimension uses a secret algorithm to generate beautiful new colors.



E0C4C2



FFD9D6



E0D3C2



706665



B00C00



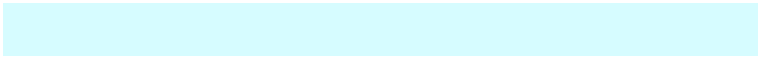
300300

Inverse Universe

The Inverse Universe completely reimagines the original color for something new.



C2DEE0



D6FCFF



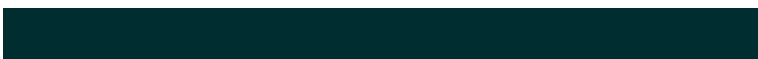
C2CFE0



656F70



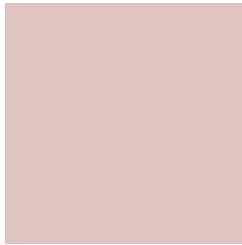
00A4B0



002D30

Previews

White Background



This preview shows how the Hex color E0C4C2 looks on a white background.

Color Contrast Check

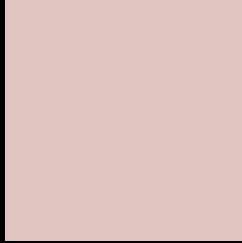
Large Text (above 18pt) WCAG AA × Fail

Any Text WCAG AA × Fail

Large Text (above 18pt) WCAG AAA × Fail

Any Text WCAG AAA × Fail

Black Background



This preview shows how the Hex color E0C4C2 looks on a black background.

Color Contrast Check

Large Text (above 18pt) WCAG AA ✓ Pass

Any Text WCAG AA ✓ Pass

Large Text (above 18pt) WCAG AAA ✓ Pass

Any Text WCAG AAA ✓ Pass

If you want to check with other color combinations, try the [Color Contrast Checker](#).

Hex E0C4C2 Background



This preview shows how black text looks on a background with the Hex color E0C4C2.

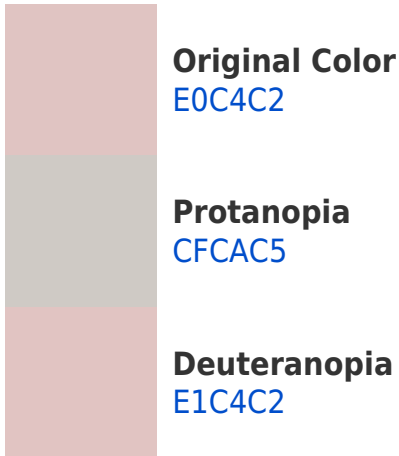


This preview shows how white text looks on a background with the Hex color E0C4C2.

Color Blindness Simulation

Color vision deficiency is a very complex topic, and I could not describe the different causes any better than Wikipedia does, so if you want to learn more, you should check out their [article about color blindness](#).

Dichromacy





Tritanopia
E2C2D1

Trichromacy



Original Color
E0C4C2

Protanomaly
D5C8C4

Deuteranomaly
E1C4C2

Tritanomaly
E1C3CC

Monochromacy



Original Color
E0C4C2

Achromatopsia
CCCCCC

Achromatomaly
D3C9C8

CSS Examples

Text

The CSS property to change the color of the text to Hex E0C4C2 is called "color". The color property can be set on classes, ids or directly on the HTML element.

This example shows how text in the color #E0C4C2 looks like.

```
.text, #text, p{  
    color:#E0C4C2  
}
```

If you want to add a text shadow in that color use the text-shadow property, you can generate a text shadow directly with our [CSS Text Shadow Generator](#).

Here you see how black text with a 4 pixel #E0C4C2 colored shadow looks like.

```
.shadow{ text-shadow: 4px 4px 2px #E0C4C2
}
```

Border

The CSS property to change the border of an element to Hex E0C4C2 is called "border". The border property can be set on classes, ids or directly on the HTML element.

This example shows the color as border, it can be applied via the CSS property "border" or "border-color".

```
.border, #border, table{ border:4px solid
#E0C4C2 }
```

If only the border color should be changed use the property `border-color`.

```
.border{ border-color:#E0C4C2 }
```

If you want to add a box shadow in that color use:

Here you see how a box with a 4 pixel #E0C4C2 colored shadow looks like.

```
.boxshadow{ -moz-box-shadow:4px 4px 4px  
4px #E0C4C2; -webkit-box-shadow:4px 4px  
4px 4px #E0C4C2; box-shadow:4px 4px 4px  
4px #E0C4C2 }
```

Background

The CSS property to change the background color of an element to Hex E0C4C2 is called "background". The background property can be set on classes, ids or directly on the HTML element.

```
.background, #background, body{  
background:#E0C4C2 }
```

If only the background color should be changed can be used:

```
.background{ background-color:#E0C4C2 }
```

This example shows the color as background, it is applied via the CSS property "background".

To optimize and compress your CSS code, you can use our [online CSS compressor and optimizer](#) based on csstidy. If you want to create a linear or radial gradient as background or border, check our [CSS Gradient Generator](#).

Hey! You found this booklet interesting? Support Converting Colors with the new Membership Option!

The pro membership hides all ads, plus gives you double the colors in the color bucket, and more awesome pro features!

[Learn more, Memberships starting at \\$2.50/m!](#)

**Follow me
on Twitter!**

@ConvertingColor