

Converting Colors

Hex(E0C4CF)

Have a look what the booklet for
Hex(E0C4CF) contains.

Hex(E0C4CF)	3
<i>Conversions</i>	4
<i>Details</i>	6
<i>Harmonies</i>	11
<i>Previews</i>	23
<i>Color Blindness Simulation</i>	26
<i>CSS Examples</i>	29

Color

Hex(E0C4CF)

Conversions

Conversions Part 1

Format	Color
Hex	E0C4CF
RGB	224, 196, 207
RGB Percent	88%, 77%, 81%
CMY	0.1216, 0.2314, 0.1882
CMYK	0.00, 0.12, 0.08, 0.12
HSL	336°, 31%, 82%
HSV	336°, 12%, 88%
XYZ	61.7429, 59.8321, 67.3260
YIQ	205.6260, 13.1570, 9.3570

Conversions

Conversions Part 2

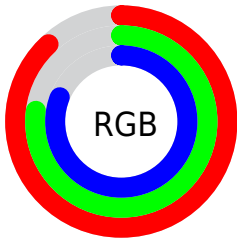
Format	Color
RYP	224, 196, 207
Decimal	14730447
CIELab	81.75, 11.71, -1.86
CIElCh	82, 11.855, 350.981
Yxy	59.8321, 0.3269, 0.3167
Android (android.graphics.Color)	4292920527 (0xFFE0C4CF)
YUV	205.6260, 0.6774, 16.1140
Hunter-Lab	77.3512, 7.1166, 2.5402

Details

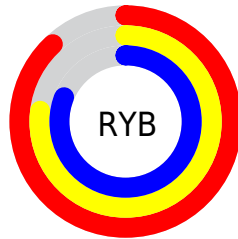
The Hex color **E0C4CF** is a light color, and the websafe version is hex **FFCCCC**. A complement of this color would be **C4E0D5**, and the grayscale version is **CECECE**.

A 20% lighter version of the original color is **FFDFFF**, and **A98E99** is the 20% darker color. If you saturate the color by 10%, you get **E0AEC1**, and if you desaturate by 10%, it is **E0DADD**.

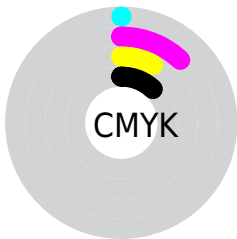
Distribution



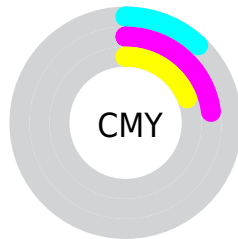
- Red (88%)
- Green (77%)
- Blue (81%)



- Red (88%)
- Yellow (77%)
- Blue (81%)



- Cyan (0%)
- Magenta (12%)
- Yellow (8%)
- Black (12%)



- Cyan (12%)
- Magenta (23%)
- Yellow (19%)

Brightness & Saturation Gradients

These gradients show how the Hex color E0C4CF changes by changing the brightness by 10 percent. The first figure shows a shift by +10% for each color and the second figure -10%.

Similar to the brightness gradients but the following saturation gradients show a change of the Hex color E0C4CF by changing the saturation by 10% instead.

 E0C4CF

 E0C4CF

FFFFFF

 C4A9B3

 FFFDFD

 A98E99

 8E757F

 745C66

 5C444E

 442E37

 2D1922

 1A000B

 000000

 E0C4CF

 E0C4CF

 E0AEC1

 E0DADD

 E097B4

 E0F1EA

 E081A6

 E0FFF8

 E06A99

 E0FFFF

 E0548B

 E03E7D

 E02770

 E01162

 E00058

Harmonies

Analogous

The Analogous color harmony consists of three colors that are next to each other on the color wheel.



D7C6D9



E0C4CF



E3C4C4

Triad

The Triadic color harmony groups three colors that are evenly spaced from another and form a triangle on the color wheel.



E0C4CF



CCCDB6



B2D0DC

Complementary

The Complementary color scheme is a pair of colors which are on the opposite of each other on the color wheel.



E0C4CF



C4E0D5

Split Complementary

Split-complementary colors differ from the complementary color scheme. The scheme consists of three colors, the original color and two neighbors of the complement color.



B0D2D3



E0C4CF



BFD0BD

Square

The Square scheme is like the rectangle color scheme, but the four colors are evenly spaced on the color wheel.



E0C4CF



D8C9B5



B5D2C7



BCCDE1

Rectangle

The Rectangle color scheme consists of four colors that form a rectangle on the color wheel.



E0C4CF



E2C5BD



B5D2C7



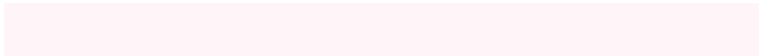
B0D1D9

Sweetspot

The Sweet Spot groups the original color and five complimentary colors.



E0C4CF



FFF5F9



D5C4E0



80797C



000000



808080

Same Dimension

The Same Dimension uses a secret algorithm to generate beautiful new colors.



E0C4CF



FFD9E8



E0C7C4



706569



B00045



300013

Inverse Universe

The Inverse Universe completely reimagines the original color for something new.



E0C4CF



FFD9E8



C4DDE0



706569



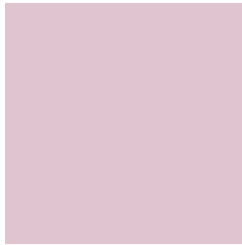
B00045



300013

Previews

White Background



This preview shows how the Hex color E0C4CF looks on a white background.

Color Contrast Check

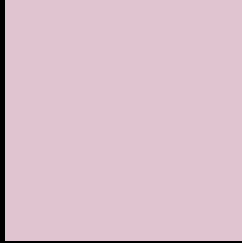
Large Text (above 18pt) WCAG AA × Fail

Any Text WCAG AA × Fail

Large Text (above 18pt) WCAG AAA × Fail

Any Text WCAG AAA × Fail

Black Background



This preview shows how the Hex color E0C4CF looks on a black background.

Color Contrast Check

Large Text (above 18pt) WCAG AA ✓ Pass

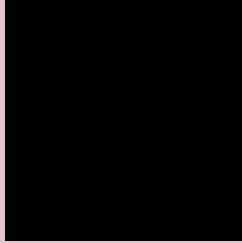
Any Text WCAG AA ✓ Pass

Large Text (above 18pt) WCAG AAA ✓ Pass

Any Text WCAG AAA ✓ Pass

If you want to check with other color combinations, try the [Color Contrast Checker](#).

Hex E0C4CF Background



This preview shows how black text looks on a background with the Hex color E0C4CF.



This preview shows how white text looks on a background with the Hex color E0C4CF.

Color Blindness Simulation

Color vision deficiency is a very complex topic, and I could not describe the different causes any better than Wikipedia does, so if you want to learn more, you should check out their [article about color blindness](#).

Dichromacy



Original Color
E0C4CF

Protanopia
CDCAD3

Deuteranopia
DDC5CF



Tritanopia
E1C3D3

Trichromacy



Original Color
E0C4CF

Protanomaly
D4C8D2

Deuteranomaly
DEC5CF

Tritanomaly
E1C3D2

Monochromacy



Original Color
E0C4CF

Achromatopsia
CECECE

Achromatomaly
D5CACE

CSS Examples

Text

The CSS property to change the color of the text to Hex E0C4CF is called "color". The color property can be set on classes, ids or directly on the HTML element.

This example shows how text in the color #E0C4CF looks like.

```
.text, #text, p{  
    color:#E0C4CF  
}
```

If you want to add a text shadow in that color use the text-shadow property, you can generate a text shadow directly with our [CSS Text Shadow Generator](#).

Here you see how black text with a 4 pixel #E0C4CF colored shadow looks like.

```
.shadow{ text-shadow: 4px 4px 2px #E0C4CF
}
```

Border

The CSS property to change the border of an element to Hex E0C4CF is called "border". The border property can be set on classes, ids or directly on the HTML element.

This example shows the color as border, it can be applied via the CSS property "border" or "border-color".

```
.border, #border, table{ border:4px solid
#E0C4CF }
```

If only the border color should be changed use the property `border-color`.

```
.border{ border-color:#E0C4CF }
```

If you want to add a box shadow in that color use:

Here you see how a box with a 4 pixel #E0C4CF colored shadow looks like.

```
.boxshadow{ -moz-box-shadow:4px 4px 4px  
4px #E0C4CF; -webkit-box-shadow:4px 4px  
4px 4px #E0C4CF; box-shadow:4px 4px 4px  
4px #E0C4CF }
```

Background

The CSS property to change the background color of an element to Hex E0C4CF is called "background". The background property can be set on classes, ids or directly on the HTML element.

```
.background, #background, body{  
background:#E0C4CF }
```

If only the background color should be changed can be used:

```
.background{ background-color:#E0C4CF }
```

This example shows the color as background, it is applied via the CSS property "background".

To optimize and compress your CSS code, you can use our [online CSS compressor and optimizer](#) based on csstidy. If you want to create a linear or radial gradient as background or border, check our [CSS Gradient Generator](#).

Hey! You found this booklet interesting? Support Converting Colors with the new Membership Option!

The pro membership hides all ads, plus gives you double the colors in the color bucket, and more awesome pro features!

[Learn more, Memberships starting at \\$2.50/m!](#)

**Follow me
on Twitter!**

@ConvertingColor