

Converting Colors

Hex(E0C5AB)

Have a look what the booklet for
Hex(E0C5AB) contains.

Hex(E0C5AB)	3
<i>Conversions</i>	4
<i>Details</i>	6
<i>Harmonies</i>	11
<i>Previews</i>	23
<i>Color Blindness Simulation</i>	26
<i>CSS Examples</i>	29

Color

Hex(E0C5AB)

Conversions

Conversions Part 1

Format	Color
Hex	E0C5AB
RGB	224, 197, 171
RGB Percent	88%, 77%, 67%
CMY	0.1216, 0.2275, 0.3294
CMYK	0.00, 0.12, 0.24, 0.12
HSL	29°, 46%, 77%
HSV	29°, 24%, 88%
XYZ	58.0574, 58.7201, 46.8022
YIQ	202.1090, 24.4380, -2.3620

Conversions

Conversions Part 2

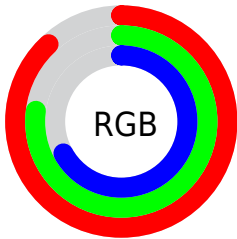
Format	Color
R_{YB}	224, 222, 171
Decimal	14730667
CIE Lab	81.14, 5.54, 16.54
CIE LCh	81, 17.444, 71.476
Yxy	58.7201, 0.3549, 0.3590
Android (android.graphics.Color)	4292920747 (0xFFE0C5AB)
YUV	202.1090, -15.3367, 19.1984
Hunter-Lab	76.6290, 1.1384, 17.4281

Details

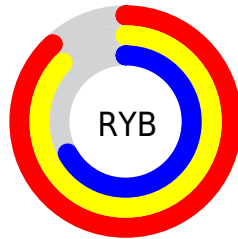
The Hex color **E0C5AB** is a light color, and the websafe version is hex **CCCC99**. A complement of this color would be **ABC6E0**, and the grayscale version is **CACACA**.

A 20% lighter version of the original color is **FFFE2**, and **A88F77** is the 20% darker color. If you saturate the color by 10%, you get **E0BA95**, and if you desaturate by 10%, it is **E0D0C1**.

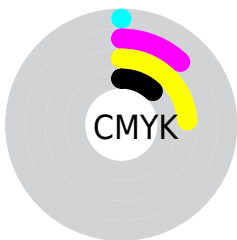
Distribution



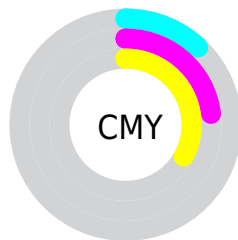
- Red (88%)
- Green (77%)
- Blue (67%)



- Red (88%)
- Yellow (87%)
- Blue (67%)



- Cyan (0%)
- Magenta (12%)
- Yellow (24%)
- Black (12%)



- Cyan (12%)
- Magenta (23%)
- Yellow (33%)

Brightness & Saturation Gradients

These gradients show how the Hex color E0C5AB changes by changing the brightness by 10 percent. The first figure shows a shift by +10% for each color and the second figure -10%.

Similar to the brightness gradients but the following saturation gradients show a change of the Hex color E0C5AB by changing the saturation by 10% instead.

 E0C5AB

 E0C5AB

FFFFFF

 C4AA90

 FFFEE2

 A88F77

 8D765E

 735D46

 5A4630

 422F1A

 2C1A00

 130000

 000000

 E0C5AB

 E0C5AB

 E0BA95

 E0D0C1

 E0AE7E

 E0DCD8

 E0A368

 E0E7EE

 E09751

 E0F3FF

 E08C3B

 E0FEFF

 E08125

 E0FFFF

 E0750E

 E06E00

Harmonies

Analogous

The Analogous color harmony consists of three colors that are next to each other on the color wheel.



EAC0B5



E0C5AB



D0CAAA

Triad

The Triadic color harmony groups three colors that are evenly spaced from another and form a triangle on the color wheel.



E0C5AB



A1D3CF



D4C3E2

Complementary

The Complementary color scheme is a pair of colors which are on the opposite of each other on the color wheel.



E0C5AB



ABC6E0

Split Complementary

Split-complementary colors differ from the complementary color scheme. The scheme consists of three colors, the original color and two neighbors of the complement color.



C0C9E9



E0C5AB



A0D2DE

Square

The Square scheme is like the rectangle color scheme, but the four colors are evenly spaced on the color wheel.



E0C5AB



ACD2BF



ACCEE8



E4BFD4

Rectangle

The Rectangle color scheme consists of four colors that form a rectangle on the color wheel.



E0C5AB



C4CEAD



ACCEE8



CEC5E5

Sweetspot

The Sweet Spot groups the original color and five complimentary colors.



E0C5AB



FFF6ED



E0ABC6



807A75



000000



808080

Same Dimension

The Same Dimension uses a secret algorithm to generate beautiful new colors.



E0C5AB



FFDBB8



E0DFAB



706A65



B05600



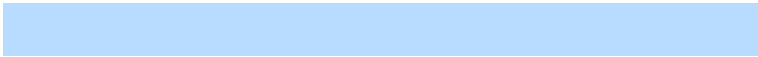
301800

Inverse Universe

The Inverse Universe completely reimagines the original color for something new.



ABC6E0



B8DCFF



ABACE0



656B70



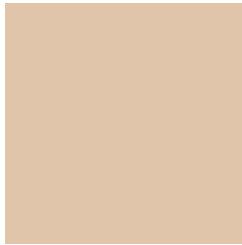
005AB0



001930

Previews

White Background



This preview shows how the Hex color E0C5AB looks on a white background.

Color Contrast Check

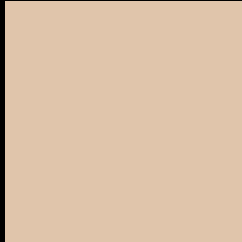
Large Text (above 18pt) WCAG AA × Fail

Any Text WCAG AA × Fail

Large Text (above 18pt) WCAG AAA × Fail

Any Text WCAG AAA × Fail

Black Background



This preview shows how the Hex color E0C5AB looks on a black background.

Color Contrast Check

Large Text (above 18pt) WCAG AA ✓ Pass

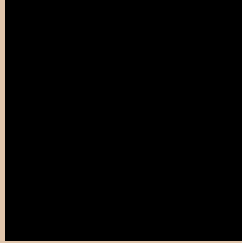
Any Text WCAG AA ✓ Pass

Large Text (above 18pt) WCAG AAA ✓ Pass

Any Text WCAG AAA ✓ Pass

If you want to check with other color combinations, try the [Color Contrast Checker](#).

Hex E0C5AB Background



This preview shows how black text looks on a background with the Hex color E0C5AB.

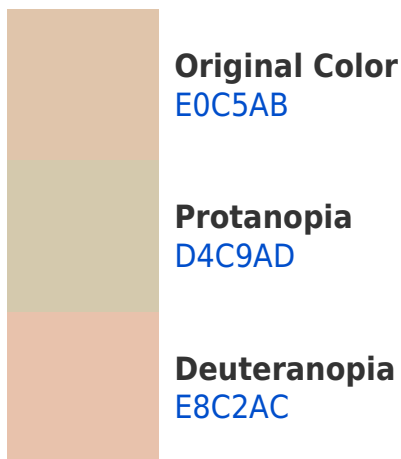


This preview shows how white text looks on a background with the Hex color E0C5AB.

Color Blindness Simulation

Color vision deficiency is a very complex topic, and I could not describe the different causes any better than Wikipedia does, so if you want to learn more, you should check out their [article about color blindness](#).

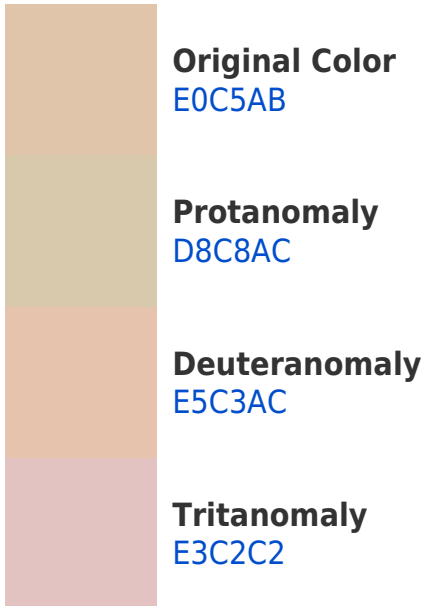
Dichromacy



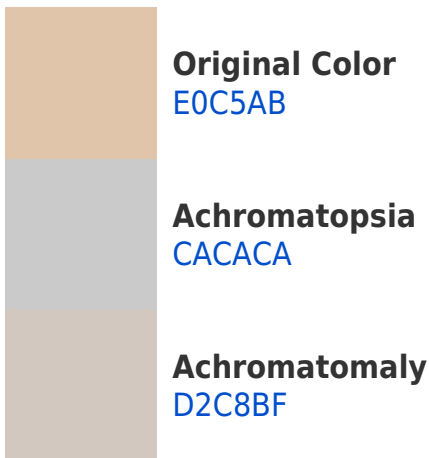


Tritanopia
E4C0CF

Trichromacy



Monochromacy



CSS Examples

Text

The CSS property to change the color of the text to Hex E0C5AB is called "color". The color property can be set on classes, ids or directly on the HTML element.

This example shows how text in the color #E0C5AB looks like.

```
.text, #text, p{  
    color:#E0C5AB  
}
```

If you want to add a text shadow in that color use the text-shadow property, you can generate a text shadow directly with our [CSS Text Shadow Generator](#).

Here you see how black text with a 4 pixel #E0C5AB colored shadow looks like.

```
.shadow{ text-shadow: 4px 4px 2px #E0C5AB
}
```

Border

The CSS property to change the border of an element to Hex E0C5AB is called "border". The border property can be set on classes, ids or directly on the HTML element.

This example shows the color as border, it can be applied via the CSS property "border" or "border-color".

```
.border, #border, table{ border:4px solid
#E0C5AB }
```

If only the border color should be changed use the property `border-color`.

```
.border{ border-color:#E0C5AB }
```

If you want to add a box shadow in that color use:

Here you see how a box with a 4 pixel #E0C5AB colored shadow looks like.

```
.boxshadow{ -moz-box-shadow:4px 4px 4px  
4px #E0C5AB; -webkit-box-shadow:4px 4px  
4px 4px #E0C5AB; box-shadow:4px 4px 4px  
4px #E0C5AB }
```

Background

The CSS property to change the background color of an element to Hex E0C5AB is called "background". The background property can be set on classes, ids or directly on the HTML element.

```
.background, #background, body{  
background:#E0C5AB }
```

If only the background color should be changed can be used:

```
.background{ background-color:#E0C5AB }
```

This example shows the color as background, it is applied via the CSS property "background".

To optimize and compress your CSS code, you can use our [online CSS compressor and optimizer](#) based on csstidy. If you want to create a linear or radial gradient as background or border, check our [CSS Gradient Generator](#).

Hey! You found this booklet interesting? Support Converting Colors with the new Membership Option!

The pro membership hides all ads, plus gives you double the colors in the color bucket, and more awesome pro features!

[Learn more, Memberships starting at \\$2.50/m!](#)

**Follow me
on Twitter!**

@ConvertingColor