

Converting Colors

Hex(E0C5CB)

Have a look what the booklet for
Hex(E0C5CB) contains.

Hex(E0C5CB)	3
<i>Conversions</i>	4
<i>Details</i>	6
<i>Harmonies</i>	11
<i>Previews</i>	23
<i>Color Blindness Simulation</i>	26
<i>CSS Examples</i>	29

Color

Hex(E0C5CB)

Conversions

Conversions Part 1

Format	Color
Hex	E0C5CB
RGB	224, 197, 203
RGB Percent	88%, 77%, 80%
CMY	0.1216, 0.2275, 0.2039
CMYK	0.00, 0.12, 0.09, 0.12
HSL	347°, 30%, 83%
HSV	347°, 12%, 88%
XYZ	61.4862, 60.0916, 64.8581
YIQ	205.7570, 14.1660, 7.5900

Conversions

Conversions Part 2

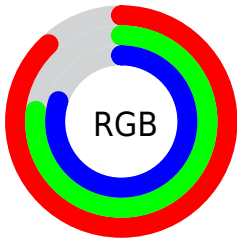
Format	Color
R _Y B	224, 197, 203
Decimal	14730699
CIE Lab	81.89, 10.50, 0.49
CIE LCh	82, 10.511, 2.687
Yxy	60.0916, 0.3298, 0.3223
Android (android.graphics.Color)	4292920779 (0xFFE0C5CB)
YUV	205.7570, -1.3592, 15.9991
Hunter-Lab	77.5188, 5.9245, 4.6566

Details

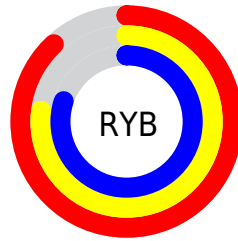
The Hex color **E0C5CB** is a light color, and the websafe version is hex **CCCCCC**. A complement of this color would be **C5E0DA**, and the grayscale version is **CECECE**.

A 20% lighter version of the original color is **FFFEFF**, and **A98F95** is the 20% darker color. If you saturate the color by 10%, you get **E0AFBA**, and if you desaturate by 10%, it is **E0DBDC**.

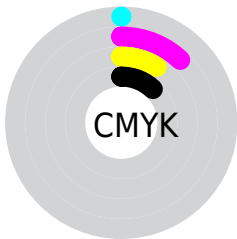
Distribution



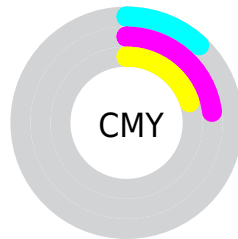
- Red (88%)
- Green (77%)
- Blue (80%)



- Red (88%)
- Yellow (77%)
- Blue (80%)



- Cyan (0%)
- Magenta (12%)
- Yellow (9%)
- Black (12%)



- Cyan (12%)
- Magenta (23%)
- Yellow (20%)

Brightness & Saturation Gradients

These gradients show how the Hex color E0C5CB changes by changing the brightness by 10 percent. The first figure shows a shift by +10% for each color and the second figure -10%.

Similar to the brightness gradients but the following saturation gradients show a change of the Hex color E0C5CB by changing the saturation by 10% instead.

 E0C5CB

 E0C5CB

FFFFFF

 C4AAB0

FFFEFF

 A98F95

 8E767B

 745D62

 5C454B

 442F34

 2D1A1F

 1A0006

 000000

 E0C5CB

 E0C5CB

 E0AFBA

 E0DBDC

 E098A8

 E0F2EE

 E08297

 E0FFFF

 E06B85

 E05574

 E03F62

 E02851

 E01240

 E00032

Harmonies

Analogous

The Analogous color harmony consists of three colors that are next to each other on the color wheel.



DAC6D5



E0C5CB



E1C6C1

Triad

The Triadic color harmony groups three colors that are evenly spaced from another and form a triangle on the color wheel.



E0C5CB



C8CEBB



B8CFDD

Complementary

The Complementary color scheme is a pair of colors which are on the opposite of each other on the color wheel.



E0C5CB



C5E0DA

Split Complementary

Split-complementary colors differ from the complementary color scheme. The scheme consists of three colors, the original color and two neighbors of the complement color.



B3D1D6



E0C5CB



BDD1C2

Square

The Square scheme is like the rectangle color scheme, but the four colors are evenly spaced on the color wheel.



E0C5CB



D3CBB8



B5D2CC



C3CCDF

Rectangle

The Rectangle color scheme consists of four colors that form a rectangle on the color wheel.



E0C5CB



DEC7BC



B5D2CC



B6D0DB

Sweetspot

The Sweet Spot groups the original color and five complimentary colors.



E0C5CB



FFF5F7



DAC5E0



80797B



000000



808080

Same Dimension

The Same Dimension uses a secret algorithm to generate beautiful new colors.



E0C5CB



FFDBE3



E0CCC5



706567



B00027



30000B

Inverse Universe

The Inverse Universe completely reimagines the original color for something new.



E0C5CB



FFDBE3



C5D9E0



706567



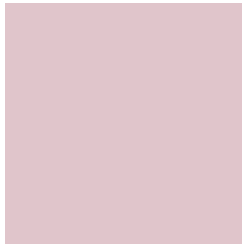
B00027



30000B

Previews

White Background



This preview shows how the Hex color E0C5CB looks on a white background.

Color Contrast Check

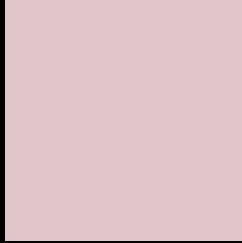
Large Text (above 18pt) WCAG AA × Fail

Any Text WCAG AA × Fail

Large Text (above 18pt) WCAG AAA × Fail

Any Text WCAG AAA × Fail

Black Background



This preview shows how the Hex color E0C5CB looks on a black background.

Color Contrast Check

Large Text (above 18pt) WCAG AA ✓ Pass

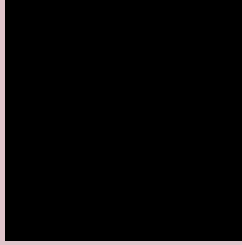
Any Text WCAG AA ✓ Pass

Large Text (above 18pt) WCAG AAA ✓ Pass

Any Text WCAG AAA ✓ Pass

If you want to check with other color combinations, try the [Color Contrast Checker](#).

Hex E0C5CB Background



This preview shows how black text looks on a background with the Hex color E0C5CB.



This preview shows how white text looks on a background with the Hex color E0C5CB.

Color Blindness Simulation

Color vision deficiency is a very complex topic, and I could not describe the different causes any better than Wikipedia does, so if you want to learn more, you should check out their [article about color blindness](#).

Dichromacy





Tritanopia
E1C4D3

Trichromacy



Original Color
E0C5CB

Protanomaly
D5C9CD

Deuteranomaly
DFC5CB

Tritanomaly
E1C4D0

Monochromacy



Original Color
E0C5CB

Achromatopsia
CECECE

Achromatomaly
D5CBCD

CSS Examples

Text

The CSS property to change the color of the text to Hex E0C5CB is called "color". The color property can be set on classes, ids or directly on the HTML element.

This example shows how text in the color #E0C5CB looks like.

```
.text, #text, p{  
    color:#E0C5CB  
}
```

If you want to add a text shadow in that color use the text-shadow property, you can generate a text shadow directly with our [CSS Text Shadow Generator](#).

Here you see how black text with a 4 pixel #E0C5CB colored shadow looks like.

```
.shadow{ text-shadow: 4px 4px 2px #E0C5CB
}
```

Border

The CSS property to change the border of an element to Hex E0C5CB is called "border". The border property can be set on classes, ids or directly on the HTML element.

This example shows the color as border, it can be applied via the CSS property "border" or "border-color".

```
.border, #border, table{ border:4px solid
#E0C5CB }
```

If only the border color should be changed use the property `border-color`.

```
.border{ border-color:#E0C5CB }
```

If you want to add a box shadow in that color use:

Here you see how a box with a 4 pixel #E0C5CB colored shadow looks like.

```
.boxshadow{ -moz-box-shadow:4px 4px 4px  
4px #E0C5CB; -webkit-box-shadow:4px 4px  
4px 4px #E0C5CB; box-shadow:4px 4px 4px  
4px #E0C5CB }
```

Background

The CSS property to change the background color of an element to Hex E0C5CB is called "background". The background property can be set on classes, ids or directly on the HTML element.

```
.background, #background, body{  
background:#E0C5CB }
```

If only the background color should be changed can be used:

```
.background{ background-color:#E0C5CB }
```

This example shows the color as background, it is applied via the CSS property "background".

To optimize and compress your CSS code, you can use our [online CSS compressor and optimizer](#) based on csstidy. If you want to create a linear or radial gradient as background or border, check our [CSS Gradient Generator](#).

Hey! You found this booklet interesting? Support Converting Colors with the new Membership Option!

The pro membership hides all ads, plus gives you double the colors in the color bucket, and more awesome pro features!

[Learn more, Memberships starting at \\$2.50/m!](#)

**Follow me
on Twitter!**

@ConvertingColor